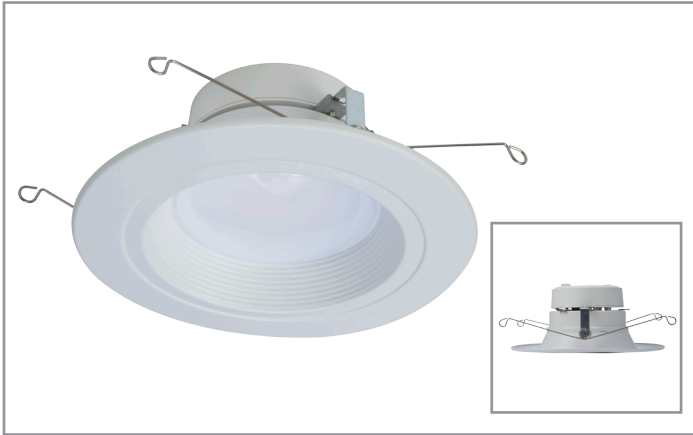


Project		Catalog #		Type	
Prepared by		Notes		Date	



# HALO HOME™

## RL56 | Lumen Select

5-inch/6-inch All-purpose LED retrofit module with Bluetooth® Mesh connectivity

### Typical Applications

Residential

### Interactive Menu

- Order Information [page 2](#)
- Product Specifications [page 3](#)
- Photometric Data [page 4](#)
- Energy & Performance Data [page 4](#)
- Product Warranty

### Product Certification



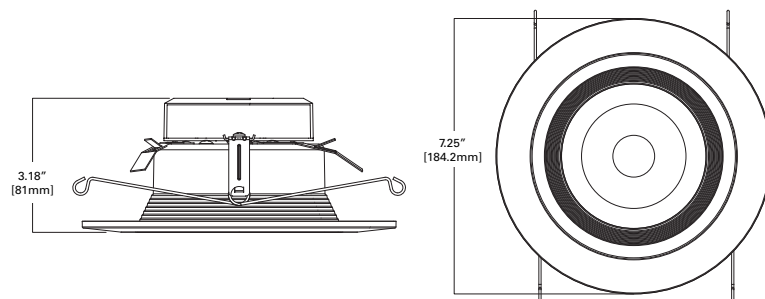
### Product Features



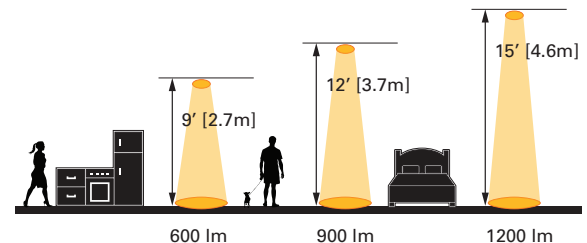
### Top Product Features

- Selectable lumens: set max lumen output at 600, 900 or 1200 lumens
- Adjustable white tuning: 2700K - 5000K, 90 CRI
- Connect to the HALO Home Bluetooth Mesh network, no hub required
- Suitable for new construction, remodel and retrofit
- Listed for use with HALO 5" & 6" housings. Classified for use with other 5" & 6" housings

### Dimensional and Mounting Details



### Scale



## Order Information

SAMPLE ORDER NUMBER: **RL56129BLE40AWH**

Icon Key: ▲ Configurable Product

Models	Lumens	CRI/CCT	Protocol	Finish
--------	--------	---------	----------	--------

### Standard Driver 120-277VAC, 0-10V analog dimming

Models	Lumens	CRI/CCT	Protocol	Finish
<b>RL56</b> = 5"/6" all- purpose retrofit LED module	<b>12</b> = 1200 lumens (nominal)	<b>9</b> = 90 CRI minimum, white tuning, select CCT 2700K – 5000K, in the mobile app	<b>BLE40A</b> = Bluetooth Mesh wireless control, 4.0	<b>WH</b> = Matte white baffle
<b>Notes</b>	<b>Notes</b>	<b>Notes</b>	<b>Notes</b>	<b>Notes</b>

### Accessories

Accessories
<p><b>Designer Trims</b></p> <p><b>RL56TRMWHB</b> = 5"/6" White Paintable Trim Ring, Baffle</p> <p><b>RL56TRMSNB</b> = 5"/6" Satin Nickel Trim Ring, Baffle</p> <p><b>RL56TRMTBZB</b> = 5"/6" Tuscan Bronze Trim Ring, Baffle</p> <p><b>RL56TRMWH</b> = 5"/6" White Paintable Trim Ring</p> <p><b>RL56TRMSN</b> = 5"/6" Satin Nickel Trim Ring</p> <p><b>RL56TRMTBZ</b> = 5"/6" Tuscan Bronze Trim Ring</p>
<b>Notes</b>

## Product Specifications

### Wireless System

- For use with the Halo Home mobile app
- Bluetooth low energy (BLE) mesh allows on/off, white tuning and lumen output to be controlled wirelessly with companion wall switches, smart phones and tablets using HALO Home mobile application
- Setup groups, scenes and schedules to automate lighting with the HALO Home mobile app

### Wireless Pairing

- See HALO Home Quick Start Guide for wireless setup, guidance and troubleshooting: [halohomesupport.eaton.com/download](http://halohomesupport.eaton.com/download)

### Bluetooth Mesh

- HALO Home products work better together. Smartphone(s) will need to be within range of HALO Home device to control
- Expand and strengthen the Bluetooth network range by adding HALO Home devices. Learn more at [halohomesupport.eaton.com/mesh](http://halohomesupport.eaton.com/mesh)

### Module - Trim

- Module construction includes LED array, heat sink, reflector, lens, baffle and trim ring
- Regressed baffle
- Heat sink designed to conduct heat away from the LED array, keeping the junction temperatures below specified maximums, even when installed in insulated ceiling environments

### LED Array

- Use the HALO Home app to set maximum light output - choose between 600, 900 or 1200 lumens
- Mid power LED array provides a uniform source with high efficiency and no pixilation
- 90 CRI minimum, R9 greater than 50
- Color accuracy within 3 SDCM at the CCT endpoints and 4 SDCM in between endpoints, provide color accuracy and uniformity
- Color Temperature (CCT) has an adjustable range from 2700K to 5000K within the mobile app (factory default 3000K)
- 50,000 hour life

### Optical Assembly

- Regressed lens
- Impact-resistant polycarbonate
- Convex form and lamp-like appearance
- Diffuse for even illumination

### Driver

- Integral 120V 60 Hz constant current driver provides noise free operation
- Inline electrical quick connect and E26 adapter (included) provides mains connections
- Consult instruction sheets and Quick Start Guide for more information

### Dimming

- Continuous, flicker-free dimming from 100% to 5%
- Only dimmable with HALO Home devices or app

### Retention

- Integral torsion springs and Push-N-Twist universal installation clips offer 2 mounting options
- Both mounting options are pre-installed and designed to fit 5" & 6" compatible recessed housings

### Designer Skins (sold separately)

- RL56 skins are accessory rings that attach to the RL56 for a permanent finish. Refer to the RL56 accessories specification sheet for details
  - White (Paintable)
  - Satin Nickel
  - Tuscan Bronze

### Gaskets

- Closed cell gaskets achieve restrictive airflow requirements without additional caulking

### Compliance

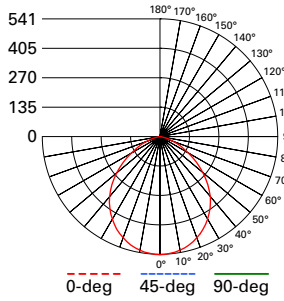
- UL Certified for use with Halo housings and other's housings
- Wet and Damp location listed
- Airtight certified per ASTM-E283
- Suitable for use in clothes closets when installed in accordance with the NEC 410.16 spacing requirements
- EMI/RFI emissions per FCC 47CFR Part 15 consumer limits
- Contains no mercury or lead and RoHS compliant
- Photometric testing in accordance with IES LM-79-08
- Lumen maintenance projections in accordance with IES LM-80-08 and TM-21-11
- Can be used for State of California Title 24 high efficacy luminaire compliance. Complies with Title 24 JA8-2016-E
- Can be used International Energy Conservation Code (IECC) high efficiency luminaire compliance
- ENERGY STAR® listed, reference database for current listings
- FCC ID: 2AKCY-RL4HLBLE
- IC Code: 4706A-RL4HLBLE

### Warranty

- Five-year limited warranty, consult website for details. [www.eaton.com/lighting/legal](http://www.eaton.com/lighting/legal)

## Photometric Data

[View IES files](#)



**RL56129BLE40AWH-3000K**  
 Spacing criterion: (0-180) 1.22  
 (90-270) 1.22  
 (Diagonal) 1.3  
 Beam Angle: 97.7°  
 Field Angle: 145.6°  
 Lumens: 1242  
 Input Watts: 14.2 W  
 Efficacy: 87.46 LPW  
 Test Report:  
 RL56129BLE40AWH-3000K.ies

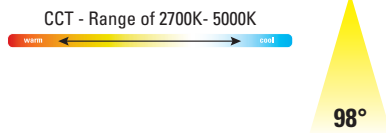
Zonal Lumen	Lumens	% Lumens
0-30	411.1	33.1
0-40	660.7	53.2
0-60	1083.0	87.2
0-90	1242.0	100

Note: Refer to IES files for more product data.

## Energy and Performance Data

### Color Metrics - TM-30-15 & CRI/CIE (3000K)

TM-30-15	Rf = 91
	Rg = 100
CRI/CIE	Ra = 92
	R9 = 74

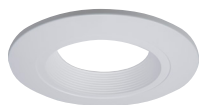
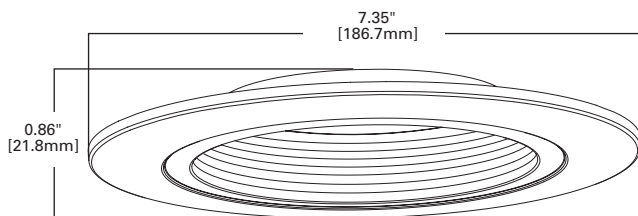


### Color Temperature Multipliers

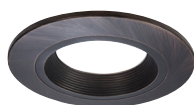
		LUMENS	POWER (W)	LPW
App Adjustable CCT	2700K	1211	13.9	87.1
	3000K	1242	14.2	87.5
	3500K	1261	14.2	88.8
	4000K	1274	14.2	89.7
	5000K	1279	14.1	90.7

## Dimensional Details

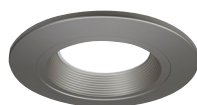
### Designer Trim - Baffle



**RL56TRMWHB**  
White (Paintable)

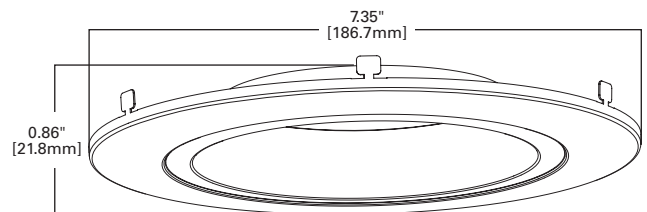


**RL56TRMTBZB**  
Tuscan Bronze

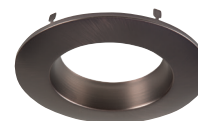


**RL56TRMSNB**  
Satin Nickel

### Designer Trim - Splay



**RL56TRMWH**  
White (Paintable)



**RL56TRMTBZ**  
Tuscan Bronze



**RL56TRMSN**  
Satin Nickel