

COMPOSITE DOOR FRAME INSTALLATION INSTRUCTIONS

Contents:

- 83" left side frame with weather seal
- 83" right side frame with weather seal
- 36" top frame with weather seal

Other Components Required:

- Composite Brickmould kit
- Interior casing kit
- Shims
- (6) #8 x1-5/8" screws to fasten frame together
- (10) #10 x3" screws to fasten frame to rough opening

Tools Required

- Tape measure
- Safety glasses
- Power drill/driver
- Power chop saw or miter box
- Framing square
- Level

Installation Instructions

STEP 1: Measure the rough opening.

STEP 2: Trim the frame to fit around the door slab being used (about 1/8 in. gap) and also to fit in the rough opening (about 1/2 in. gap.) The thick part on the bottom of the side frame is factory cut at 5 degrees to fit most sills. The top of the side is notched to fit the top frame. Trim the bottoms to fit the sill being used and to fit the height. Cut the top frame 1-1/2 in. smaller than the final frame width needed

STEP 3: Screw each side frame to the top frame with (3) #8 x 1-5/8 in. screws.

STEP 4: Set the frame assembly in the rough opening. Shim the frame in place at 5 locations on each side and 1 on the head. Ensure it is plumb, level and square.

STEP 5: Fasten the frame to the rough opening with #10 x 3 in. screws through the side frames and head at each shim location underneath the weather seal.

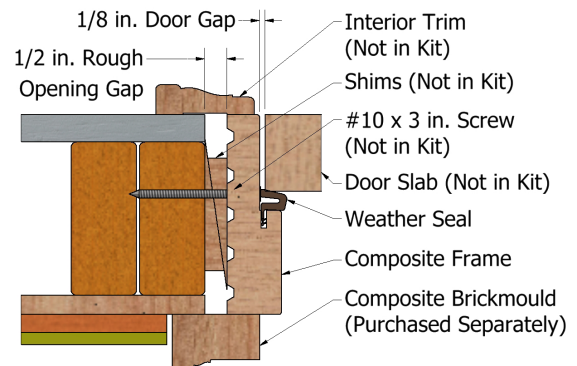
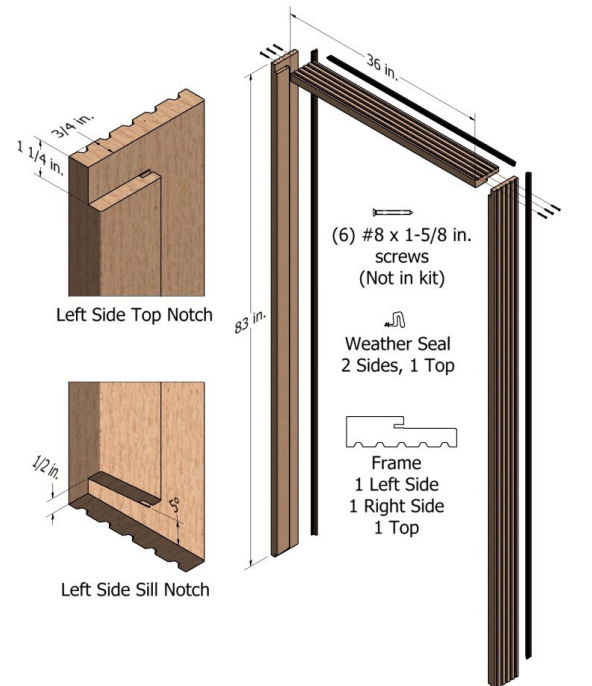
STEP 6: Install the Composite Brickmould kit on the exterior of the door frame.

STEP 7: Install interior trim on the interior of the door frame.

STEP 8: Install hinges and lock plates as needed for the door being hung on the frame. Route the frame to fit the hinges and lock plates selected.

STEP 9: For primed and woodgrain composite jambs, finish the surface of the frames within 15 days of installation to prevent the factory primer from breaking down. Woodgrain has a tan primer on it to accept stain, clear coat, or paint.

STEP 10: Seal with high quality caulk: inside top corners, bottom corners to sill, brickmould to siding, and brickmould to frame.



FrontLine®
Bldg. Products Inc.
Member of the Bay Family of Companies

www.frontlinebldg.com | sales@frontlinebldg.com | 920-393-1340