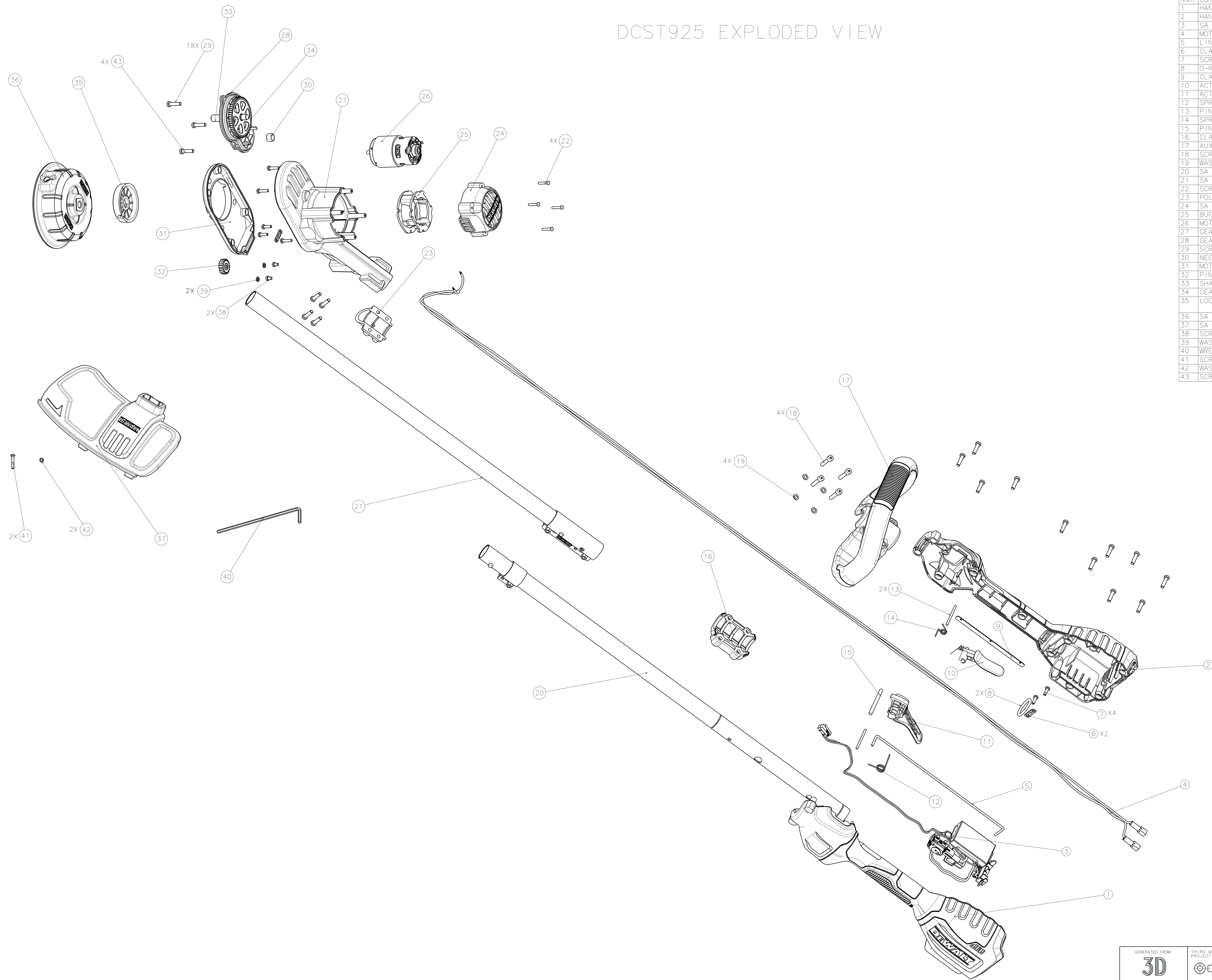


# DCST925 EXPLODED VIEW



| Num | Component           | PART NUMBER    | SUPPLIER                     | Qty |
|-----|---------------------|----------------|------------------------------|-----|
| 1   | HANDLE ASSEMBLY HSG | N603547        | ZHEJIANG BAILI               | 1   |
| 2   | HANDLE COVER HSG    | N603548        | ZHEJIANG BAILI               | 1   |
| 3   | SA MODULE           | N629660        | BLUEWAY                      | 1   |
| 4   | MOTOR WIRE          | N650825        | ZHEJIANG LONGTAI             | 1   |
| 5   | LINKAGE             | N633079        | YANGZHOU SHENLIN             | 1   |
| 6   | CLAMP, CORD CORNER  | 329301-00      |                              | 2   |
| 7   | SCREW               | 373158         | SHANGHAI GUIHONG             | 4   |
| 8   | O-RUBBER            | ITM90602632    | NINGBO GUANGMING             | 2   |
| 9   | CLAMP               | ITM90609633    | SUZHOU DEERFA                | 1   |
| 10  | ACTUATOR, LOCK OFF  | ITM90601034    | SUZHOU JUNMA                 | 1   |
| 11  | ACTUATOR, TRIGGER   | ITM90599030    | SUZHOU JUNMA                 | 1   |
| 12  | SPRING, ACTUATOR    | ITM90602634    | YANGZHOU SHENLIN             | 1   |
| 13  | PIN, PIVOT          | ITM90608942    | CHANGZHOU TAIBO              | 2   |
| 14  | SPRING, LOCK        | ITM90602633    | YANGZHOU SHENLIN             | 1   |
| 15  | PIN, DOWEL          | ITM90608944    | CHANGZHOU TAIBO              | 1   |
| 16  | CLAMP               | ITM90626615    | CHANGZHOU SHENGYUE           | 1   |
| 17  | AUX HANDLE          | ITM90626610-01 | CHANGZHOU SHENGYUE           | 1   |
| 18  | SCREW, AUX HANDLE   | ITM90614038    | SHANGHAI GUIHONG             | 4   |
| 19  | WASHER, AUX HANDLE  | 330016-15      |                              | 4   |
| 20  | SA POLE, BOTTOM     | ITM90626133    | SUZHOU YITEI                 | 1   |
| 21  | SA POLE, TOP        | N638120        | SUZHOU YITEI                 | 1   |
| 22  | SCREW, MOTOR CAP    | ITM90614124    | SHANGHAI GUIHONG             | 4   |
| 23  | POLE CLAMP          | N621123        | SUZHOU YONGLI                | 1   |
| 24  | SA MOTOR CAP        | N640806        | SUZHOU JUNMA                 | 1   |
| 25  | BUFFLE              | N632734        | SUZHOU YONGLI                | 1   |
| 26  | MOTOR               | N626893        | SUZHOU YIZHU                 | 1   |
| 27  | GEAR CASE           | N604481        | SUZHOU QIANYONG              | 1   |
| 28  | GEAR CASE COVER     | N631518        | SUZHOU QIANYONG              | 1   |
| 29  | SCREW               | ITM90614124-02 | SHANGHAI GUIHONG             | 18  |
| 30  | NEEDLE BEAR         | 330004-27      |                              | 1   |
| 31  | MOTOR COVER HSG     | N604483        | SUZHOU YONGLI                | 1   |
| 32  | PINION              | ITM90603304    | YANGZHOU HAICANG             | 1   |
| 33  | SHAFT               | ITM90601861    | ZHEJIANG YONGLI              | 1   |
| 34  | GEAR                | ITM90636977    | SUZHOU QIANYONG              | 1   |
| 35  | LOCK PLATE          | ITM90607066    | SHANGHAI JI AFANG(TONGCHENG) | 1   |
| 36  | SA SPOOL            | ITM90599025    | SUZHOU JUNMA                 | 1   |
| 37  | SA GUARD            | N631499        | SUZHOU YONGLI                | 1   |
| 38  | SCREW, MOTOR        | ITM90577146    |                              | 2   |
| 39  | WASHER              | 098197-03      |                              | 2   |
| 40  | WRENCH, HEX         | ITM90641326    | SHANGHAI JIWEI               | 1   |
| 41  | SCREW, NO. 6X19     | 747329         |                              | 2   |
| 42  | WASHER, LOCK        | 098197-02      | SHANGHAI JIWEI               | 2   |
| 43  | SCREW               | ITM90614124    | SHANGHAI GUIHONG             | 4   |

|   |                        |  |   |
|---|------------------------|--|---|
| GENERATED FROM:<br><b>3D</b>  | THIRD ANGLE PROJECTION | TOL UNLESS SPECIFIED<br>0 & 1 PLC DEC: 0.3<br>2 PLC DEC: ±0.10<br>ANGLES: ± 1.0° | BLACK & DECKER INC.   |
| THIS DOCUMENT IS THE PROPERTY OF BLACK & DECKER INC. THE CONTENTS OF THIS DOCUMENT ARE CONFIDENTIAL AND UNLESS OTHERWISE SPECIFIED, ALL RIGHTS ARE RESERVED. NO PART OF THIS DOCUMENT SHALL BE DISCLOSED TO ANY UNAUTHORIZED PERSON, COPIED OR PUBLISHED WITHOUT THE WRITTEN CONSENT OF BLACK & DECKER INC. |                        | ALL DIMENSIONS mm<br>SIZE: A0<br>REF SCALE: 1:1                                  | DOC NO:<br>TITLE:<br>REVISION: *** VER/ITER: ***<br>CHANGE: |
| SHEET: 1 OF 1   |                        | FOR PART DATA REFER TO PART DETAILS REPORT ***                                   |   |

COPYRIGHT © 2018 BLACK & DECKER INC.