

Shark

CORDLESS

SV780



IMPORTANT SAFETY INSTRUCTIONS - FOR HOUSEHOLD USE ONLY READ CAREFULLY BEFORE USE - SAVE THESE INSTRUCTIONS

⚠ WARNING

To reduce the risk of injury, fire, electric shock, and property damage resulting from improper use of the appliance, carefully observe the following instructions. This unit contains electrical connections and moving parts that potentially present risk to the user.

POWER SUPPLY, CHARGING ADAPTER, AND HAND VACUUM CONTAIN ELECTRICAL CONNECTIONS:

1. There are **NO** serviceable parts.
2. **DO NOT** use to vacuum any liquids.
3. **DO NOT** immerse in water or other liquids.
4. Inspect charging adapter cord and plug for any damage before use. **DO NOT** use hand vacuum with a damaged charging adapter cord or plug. Turn off all controls before plugging in or unplugging the hand vacuum from the adapter.
5. **DO NOT** use or charge unit outdoors or on wet surfaces. Use only on dry surfaces.
6. If hand vacuum is not working as it should, or has been dropped, damaged, left outdoors, or dropped into water, return it to SharkNinja Operating LLC for examination, repair, or adjustment.
7. **DO NOT** pull or carry the charging adapter by the cord or use the cord as a handle.
8. **DO NOT** unplug the charging adapter by pulling on the cord. Grasp the plug, not the cord.
9. **DO NOT** handle charging adapter or hand vacuum with wet hands.
10. **DO NOT** use charging adapter with an extension cord.
11. Use only the charging adapter model XA780N supplied with this appliance.
12. Keep charging adapter cord away from heated surfaces.
13. This hand vacuum includes rechargeable nickel metal hydride batteries. Batteries must be recycled or disposed of properly. **DO NOT** incinerate batteries or expose to high temperatures as they may explode.
14. Leaks from battery cells can occur under extreme conditions. If the liquid gets on skin, wash immediately with soap and water. If the liquid gets into eyes, flush them immediately with clean water for a minimum of 10 minutes and seek medical attention.

GENERAL USE

15. Use only as described in this manual.
16. Keep your work area well lit.
17. Keep the vacuum cleaner moving over the carpet surface at all times to avoid damaging the carpet fibers.
18. **DO NOT** place hand vacuum on unstable surfaces such as chairs or tables.
19. **DO NOT** put any objects into openings. **DO NOT** use with any opening blocked; keep free of dust, lint, hair, and anything that may reduce airflow.
20. **DO NOT** allow the appliance to be used by children. Close attention is necessary when used near children. This is not a toy.
21. **DO NOT** use without dust cup and filter in place.
22. **ALWAYS** turn off the hand vacuum before connecting or disconnecting the air-intake nozzle.

DUST CUP, FILTER, AND ACCESSORIES

Before turning on the hand vacuum:

23. Make sure filter is thoroughly dry after routine cleaning.
24. Make sure dust cup and filter are in place.
25. Make sure accessories are free of blockages.
26. Use only Shark® brand filters and accessories. Using other brands will void warranty.

GENERAL CLEANING

27. **DO NOT** vacuum up large objects.
28. **DO NOT** vacuum up hard or sharp objects such as glass, nails, screws, or coins that could damage the hand vacuum.
29. **DO NOT** vacuum up drywall dust, fireplace ash, or embers. **DO NOT** use as an attachment to power tools for dust collection.
30. **DO NOT** vacuum up smoking or burning objects such as hot coals, cigarette butts, or matches.
31. **DO NOT** vacuum up flammable or combustible materials (e.g., lighter fluid, gasoline, or kerosene) or use hand vacuum in areas where they may be present.
32. **DO NOT** vacuum up toxic solutions (e.g., chlorine bleach, ammonia, or drain cleaner).
33. **DO NOT** use in an enclosed space where vapors are present from paint, paint thinner, moth-proofing substances, flammable dust, or other explosive or toxic materials.
34. Use extra care when cleaning on stairs.

NI-MH BATTERY

35. **WARNING:** The cordless hand vacuum is powered by Ni-MH batteries, which must be recycled or disposed of properly in accordance with state, federal, and local laws.
36. If uncertain as to how to remove the battery pack, we suggest that you take your hand vacuum to a reputable small appliance service technician to have this service performed.
37. **WARNING: DO NOT** attempt to replace the batteries used in this hand vacuum with any other type of battery.
38. **WARNING: NEVER** use ordinary batteries for replacement as these may leak and damage your hand vacuum. Use only the battery pack provided by SharkNinja.

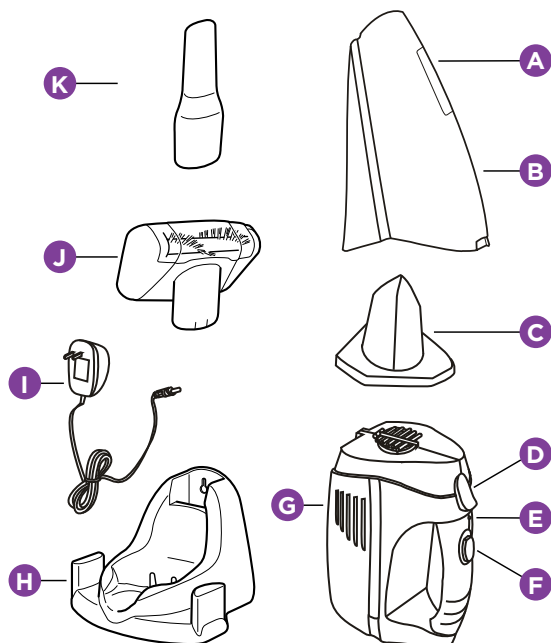
MAXIMIZING THE LIFE OF YOUR BATTERY

39. **DO NOT** store the unit with the charging adapter attached and plugged in.
40. **DO NOT** store in areas of high temperature or humidity.
41. Use only the charging adapter supplied with the hand vacuum. If other chargers are used, the batteries can fail, causing damage to the battery, hand vacuum, or personal property.
42. After 3 months of non-use, the hand vacuum should be fully discharged and then recharged to maximize battery power.
43. If the hand vacuum has never been stored for an extended period of time without use, it will take several complete charge and discharge cycles to realize the full operational time of your hand vacuum.
44. Ni-MH batteries have a long, useful life but will eventually need to be replaced. To purchase replacement batteries, visit sharkaccessories.com

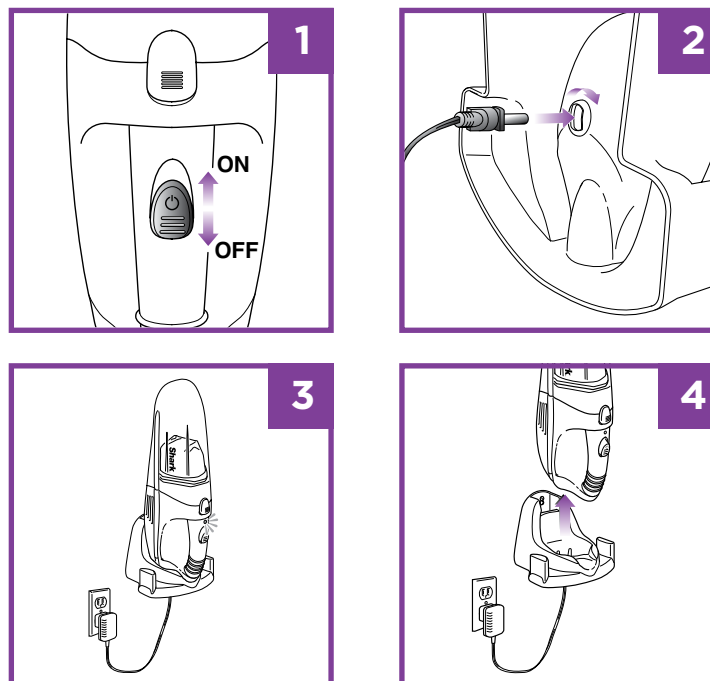
FEATURES

- | | |
|-----------------------------------|---------------------------|
| A Air-Intake Nozzle | G Motor Housing |
| B Dust Cup | H Charging Base |
| C Dust Cup Filter | I Charging Adapter |
| D Dust Cup Release Button | J Motorized Brush |
| E Charging Indicator Light | K Crevice Tool |
| F On/Off Switch | |

TECHNICAL SPECIFICATIONS: 15.6-Volt DC

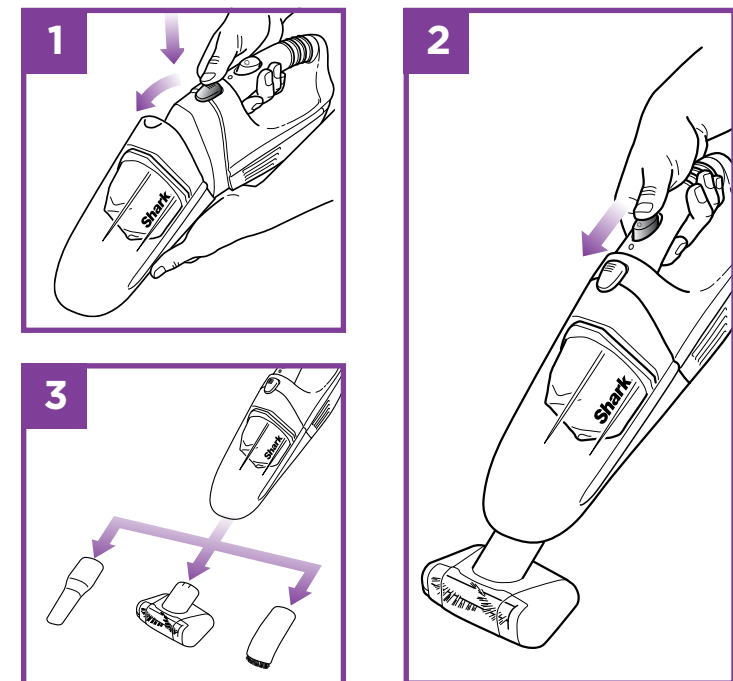


CHARGING YOUR HAND VACUUM



1. Before charging for the first time, make sure the power switch is off.
2. Connect charging adapter to port on the bottom of the charging base. Turn the charge adapter plug clockwise one-quarter of the way around to secure it place.
3. Plug charging adapter into a wall outlet and place the hand vacuum on the charging base. The Charging Indicator light will illuminate.
4. Remove the hand vacuum from the charging adapter when the Charging Indicator light turns off. See "Maximizing the Life of Your Battery."

HAND VACUUM ASSEMBLY AND USE



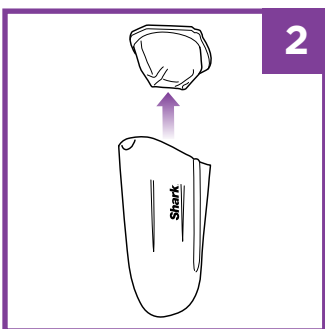
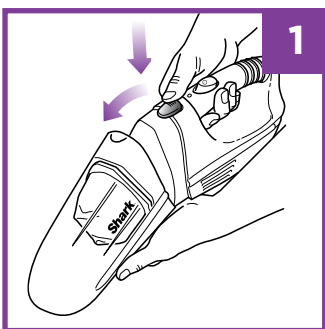
1. Push the Dust-Cup Release button and remove the dust cup to verify that the filter is inside. Reinstall the dust cup.
2. Insert the desired accessory into the air-intake nozzle.
3. Press the power switch to turn on the hand vacuum.

NOTE: During first use, discharge fully to properly condition the battery. It takes approximately 2.5 hours to charge battery completely.

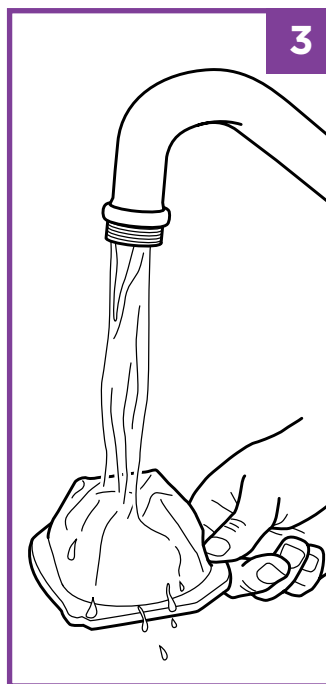
NOTE: For maintenance, see reverse side.

MAINTENANCE

EMPTYING THE DUST CUP AND CLEANING THE FILTER

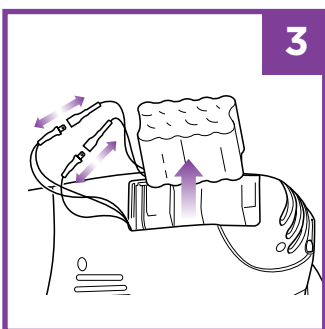
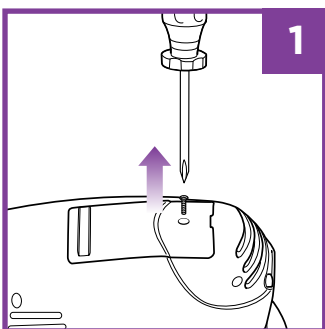


1. Press down on the Dust Cup Release button and remove the dust cup.
2. Remove filter after taking dust cup off unit. Empty debris from dust cup and filter into a trash bin.

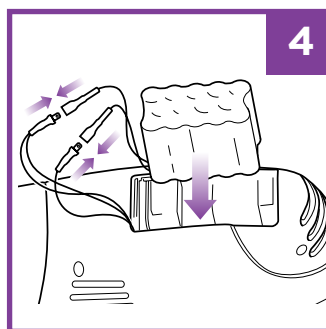
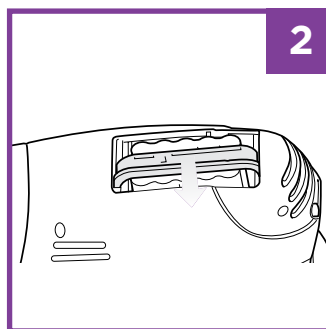


3. Hand wash the filter with water only. Allow filter to air-dry completely before reinstalling.

REPLACING THE BATTERY PACK



1. Locate the battery compartment cover on the underside of the unit. Use a Phillips-head screwdriver to remove the single screw in the battery cover.
2. Slide the battery bar over and lift out the battery pack.



3. Pull the strap on the battery pack to disconnect the terminals.
4. Connect the terminals to new battery pack. Tuck the wiring completely into the battery compartment. Make sure the terminals are completely pushed into position.

MAINTENANCE

TROUBLESHOOTING GUIDE

⚠ WARNING: To reduce the risk of shock and unintended operation, turn power off and unplug unit before servicing.

Hand vacuum is not picking up debris. No suction or light suction.

(Refer to Maintenance section for more information.)

- Check filter to see if it needs cleaning. Follow instructions for rinsing and drying the filter before reinstalling.
- Dust cup may be full; empty dust cup.
- Check for blockages in the dust cup filter.
- Make sure that the battery is fully charged.

Hand vacuum will not operate.

- The battery needs to be recharged or replaced.
- The battery may be depleted. Charge the battery until the Charging Indicator light turns off.
- Ensure nothing is blocking the air-intake opening.
- There is no power in electrical outlet used for charging. Try to charge using different outlet.

Charging Indicator does not illuminate.

- Check to see if the charging adapter is plugged in properly to the outlet and to the charging port in the base.
- Ensure there is no debris accumulated on the metal charge contacts on the hand vacuum or charging adapter.
- Ensure that the electrical outlet is supplying power to the charging adapter.

Dust escapes from hand vacuum.

- Empty the dust cup.
- Ensure that the filter is inserted completely into its holder.
- Check for punctures in dust cup filter or cracks in the dust cup and replace parts if necessary.

Hand vacuum turns off on its own.

- Charge the unit until the Charging Indicator light turns off.

Runtime has decreased, charge doesn't last as long.

Perform the following steps:

- Run hand vacuum until the sound drops significantly, then turn off the unit.
- Charge the battery for 6 hours.

TWO-YEAR LIMITED WARRANTY

The 2-Year Limited Warranty applies to purchases made from authorized retailers of SharkNinja Operating LLC. Warranty coverage applies to the original owner and to the original product only and is not transferable.

SharkNinja warrants that the unit shall be free from defects in material and workmanship for a period of 2 years from the date of purchase when it is used under normal household conditions and maintained according to the requirements outlined in this instruction manual, subject to the following conditions and exclusions.

What is covered in my warranty?

- 1 The original unit and/or non-wearable components deemed defective, in SharkNinja's sole discretion, will be repaired or replaced for up to 2 years from the original purchase date.
- 2 In the rare event that a replacement unit is issued, the warranty coverage ends six months following the receipt date of the replacement unit or the remainder of the existing warranty, whichever is greater. If the unit is replaced, SharkNinja reserves the right to replace the unit with one of equal or greater value.

What is not covered in my warranty?

Our Customer Service/Product Specialists are available to provide all the warranty service options available to you, including the possibility of upgrading to our VIP Warranty Service Options for select product categories.

- 1 Normal wear and tear of wearable parts which require regular maintenance and/or replacement to ensure the proper functioning of your unit are not covered by this warranty.
- 2 Any unit that has been tampered with or used for commercial purposes.
- 3 SharkNinja will cover the cost for the customer to send in the unit to us for repair or replacement. A fee of \$19.95 (subject to change) for return shipping costs will be charged at the time of return shipment of the repaired or replacement unit.
- 4 Damage caused by misuse, abuse, or negligent handling, or damage due to mishandling in transit.
- 5 Consequential and incidental damages.
- 6 Defects caused by or resulting from damages from shipping or from repairs, service or alteration to the product or any of its parts which have been performed by a repair person not authorized by SharkNinja.
- 7 Products purchased, used or operated outside of North America.

Problems with your unit/How to get service:

If your appliance fails to operate properly while in use under normal household conditions within the warranty period, visit sharkclean.com/support for product care/maintenance self-help.

Our Customer Service and product specialists are also available at **1-800-798-7398** to assist with product support and warranty service options.

How to initiate a warranty claim:

You can call 1-800-798-7398 to have a Customer Service specialist assist you. Please note you must call 1-800-798-7398 to initiate a warranty claim. Return and packing instruction information will be provided at that time.


For Customer Service hours, visit sharkclean.com/support

Replacement parts are available for purchase at sharkaccessories.com. For more information on which parts are classified as wearable or non-wearable, please visit sharkclean.com/warranty. This warranty gives you specific legal rights, and you also may have other rights that vary from state to state.

Some states do not permit the exclusion or limitation of incidental or consequential damages, so the above may not apply to you.

REGISTER YOUR PURCHASE

 registeryourshark.com

 Scan QR code using mobile device



TECHNICAL SPECIFICATIONS

Battery Voltage: 16.8V

Motor Watts: 135W

Battery Part Number: XB780N

Hand Vacuum Charging Adapter Part Number: XA780N

BATTERY REMOVAL AND DISPOSAL

This product uses a rechargeable and reusable Ni-MH battery. When the battery no longer holds a charge, it should be removed from the hand vacuum and recycled. **DO NOT** incinerate or compost the battery.

When your Ni-MH battery needs to be replaced, dispose of it or recycle it in accordance with local ordinances or regulations. In some areas, it is illegal to place spent Ni-MH batteries in the trash or in a municipal solid waste stream. Return spent battery to an authorized recycling center or to retailer for recycling. Contact your local recycling center for information on where to drop off the spent battery.

For more information on battery removal for disposal, please visit sharkclean.com/batterysupport



The RBRC™ (Rechargeable Battery Recycling Corporation) seal on the Ni-MH battery indicates that the costs to recycle the battery at the end of its useful life have already been paid by SharkNinja. In some areas, it is illegal to place spent Ni-MH batteries in the trash or municipal solid waste stream and the RBRC program provides an environmentally conscious alternative.

RBRC, in cooperation with SharkNinja and other battery users, has established programs in the United States and Canada to facilitate the collection of spent Ni-MH batteries. Help protect our environment and conserve natural resources by returning the spent Ni-MH battery to an authorized SharkNinja service center or to your local retailer for recycling. You may also contact your local recycling center for information on where to drop off the spent battery, or call 1-800-798-7398.

RECORD THIS INFORMATION

Model Number: _____

Date of Purchase: _____
(Keep receipt)

Store of Purchase: _____

© SharkNinja Operating LLC 2018
Needham, MA 02494/Ville St. Laurent, Québec H4S 1A7
1-800-798-7398
sharkclean.com

SHARK is a registered trademark of SharkNinja Operating LLC. RBRC is a trademark of Rechargeable Battery Recycling Corporation.

For Shark | Ninja U.S. Patent information visit sharkninja.com/uspatents

Printed in China.

Illustrations may differ from actual product.