



OP70025 / OP70057



OP70639 / OP70640



OP70588 / OP70589



OP70028 / OP70056



OP70026

## **USER'S MANUAL** **Inflatable water slide**

THIS INSTRUCTION BOOKLET CONTAINS **IMPORTANT** SAFETY INFORMATION. PLEASE READ AND KEEP FOR FUTURE REFERENCE.

*[Faded text, likely bleed-through from the reverse side of the page.]*





OP70150 / OP70102



OP70149 / OP70101



OP70151 / OP70103



OP70148 / OP70100



OP70432 / OP70431



OP70153 / OP70111



OP70708 / OP70833



OP70797US / OP70796US

---

# Contact Us!

## Do NOT return this item.

Contact our friendly customer service department for help first.



# Before You Start

Please read all instructions carefully and keep it for future reference.

### Warnings:

**Attention:** For home use only.

**Attention:** The Product is not suitable for the children under 3 years

**Danger:** Keep all small parts and packaging materials for this product away from babies and children, otherwise they may pose a choking hazard.

**Danger:** Lack of attachment may cause a risk of tipping or fall hazards.

### General Warnings:

- ⚠ The product must be installed and used under the supervision of an adult.
- ⚠ Read through each step carefully and follow the proper order.
- ⚠ Remove all packaging, separate and count all parts and hardware.
- ⚠ Please ensure that all parts are correctly installed, incorrect installation can lead to a danger.
- ⚠ We recommend that, where possible, all items are assembled near to the area in which they will be placed in use, to avoid moving the product unnecessarily once assembled.
- ⚠ Ensure a secure surface during construction, and place the product always on a flat, steady and stable surface.
- ⚠ Please check and maintain regularly, the most important parts for suspension, fixing, anchoring to the ground.

# IMPORTANT

Age 3 and up  
Surface Washable Only

Keep these instructions for further reference

Please read all of the safety rules before setting up

We believe in safety first. Please follow all of the rules for your children's safety

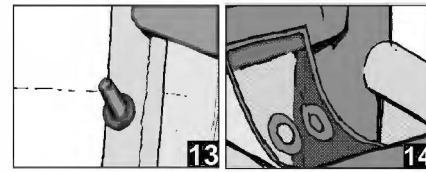
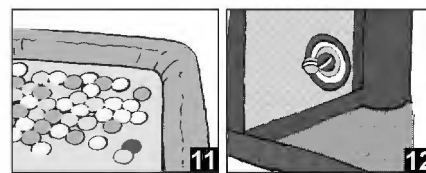
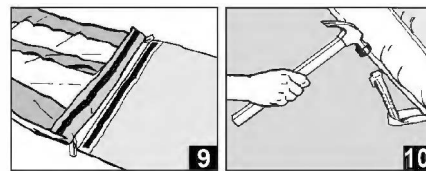
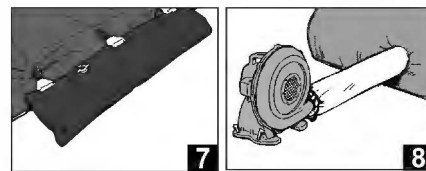
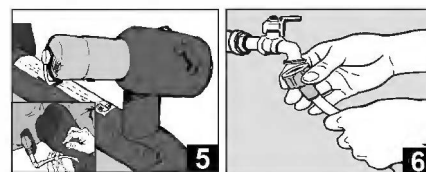
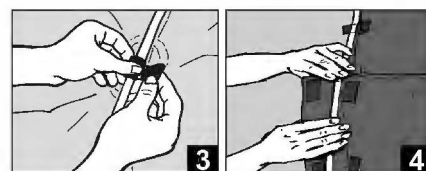
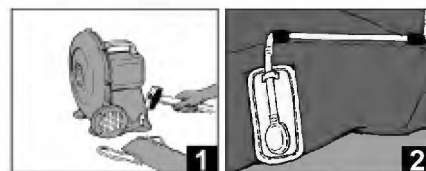
## WARNING! ELECTRICALLY OPERATED PRODUCT

ADULT SUPERVISION REQUIRED. OPERATING BLOWER(AIR PUMP) NOT RECOMMENDED FOR CHILDREN UNDER 18 YEARS OF AGE. AS WITH ALL ELECTRIC PRODUCTS, PRECAUTIONS SHOULD BE OBSERVED DURING HANDLING AND USE TO PREVENT ELECTRIC SHOCK.

**CAUTION: NOT SUITABLE FOR ADULT USE. WARNING! MAXIMUM AGE 10 YEARS. MINIMUM AGE 3 YEARS. NOT SUITABLE FOR RENTAL OR COMMERCIAL USE. TO BE USED ON SOFT GROUND ONLY. ADULTS MUST NOT USE THIS PRODUCT. ADULT SET-UP REQUIRED. ADULT SUPERVISION REQUIRED. WARNING! ONLY FOR DOMESTIC USE. OUTDOOR USE.**

## Set up Instructions:

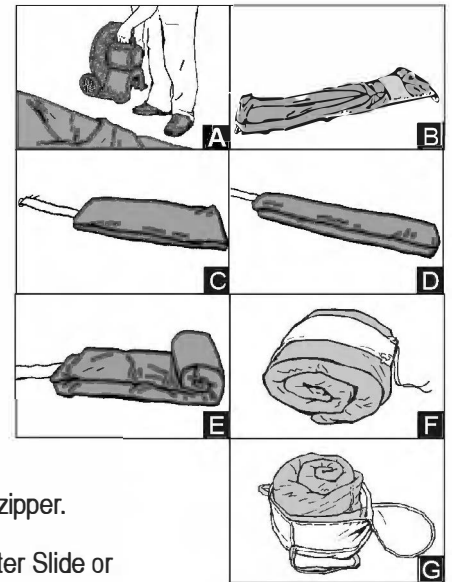
- Remove the Water Slide from the storage bag. Place the Water Slide on a soft level ground surface at least 2M from any structure or obstruction such as a fence, garage, house, overhanging branches, laundry lines or electrical wires.
- Check the ground where the Water Slide is to be inflated for any sharp objects or unusual products. Do not install the Water Slide over concrete, asphalt or any hard surface.
- Set up away from any potential fire hazards and keep blower away from water spray and ensure that water does not spray towards the blower. If water contacts blower, unplug the blower (air pump) from the power cord. Do not operate until blower is completely dry. Keep the blower (air pump) and power cord away from water supply and moisture.
- Spread out the Water Slide.
- Set up as near to power source as possible. After stretching the air fill tube, position the blower (air pump) at the end of the tube. Slide the end of the tube around the blower (air pump) air blow sprout and tighten the string. The air fill tube should be straight and untwisted, reposition the blower (air pump) if necessary. Push ground stakes for air blower through blower base holes firmly to the lawn ground. (Refer to picture 1)
- Locate and attach the sprayer nozzles with velcro found at the top beam and other designated area, then secure the hose across the top of the unit and down the sides of the Water Slide with the velcro. To avoid kinking, hose at the bottom part of the Water Slide should be hidden inside the fabric beam by velcro. (Refer to picture 2,3, and 4)
- Attach one end of the hose to the connection which fixed at the end of each cannon. (Refer to picture 5)
- Attach the hose to water supply before turning water on. (Refer to picture 6)
- Make sure the blower (air pump) "on/off" switch is in the off position. Ensure the power connections are safely sited and tripping hazard is minimized.
- If the product comes with water bags, please follow the undermentioned instruction, otherwise, overleap this point. Spread out the product, place and fasten the empty water bags at the two sides of the product. Open the stopple and fill water in the water bags until 80% full (about 22kg), push and close the stopple. Make sure water bags are firmly attached on the product and no water leakage before the product is fully inflated, and never allow children to play on the slide without installing water bags. (Refer to picture 7)
- Plug the blower into an approved grounded outlet.
- Ensure the blower (air pump) is free from debris and securely sited to avoid tripping.
- To inflate the Water Slide, (press the reset button on GFCI), turn the blower (air pump) "on/off" switch to on. The continual air-flow blower (air pump) must be left on at all times while the Water Slide is being used. (Refer to picture 8)
- The Water Slide should take less than 2 minute to inflate.
- If the product comes with slide extension, please follow the undermentioned instruction, otherwise, overleap this point. Add the Slide extension to the end of the Slide using the Velcro fastener. (Refer to picture 9)
- Ground support stakes are used for lawn ground surfaces. Hook stakes over loops. To prevent overturn or lift during play, push stakes firmly into the ground. The stakes should be placed level with or under the ground in order to reduce tripping hazards. (Refer to picture 10)
- If the products comes with the following functions or accessories, please follow the below correspondence points accordingly, otherwise, overleap the relevant functions points in the following. Put the correspondence accessories into the product if provided, such as:
  - Fill the ball pit with plastic balls provided. (Refer to picture 11)
  - Supply the dart board with dart balls provided. (Refer to picture 12)
  - You can toss some plastic rings (not provided) to have fun easily. (Refer to picture 13)
  - You can throw the plastic ball into the net hole to have fun. (Refer to picture 14)
- To prevent over turning during play, periodically check that the ground stakes are securely in place.



- To anchor the product properly, ALWAYS anchor the product and blower with corresponding ground stakes before use.
- Make sure the Slide is inflated fully before children entering to play. Failure to do so will result in the product being unstable and can cause serious injuries.
- Use of this product when under-inflated or during deflation could cause serious injuries. Always check for excessive air loss, and re-inflate before allowing play to continue.
- Turn on the water supply. Thoroughly wet all slide surfaces, platforms, and climbing walls before use to ensure optimal play performance.
- As the product remains inflated through constant air flow, air leakage from the seams is normal and necessary so the product does not over inflate.
- If the product comes with support cushions at the sides, do not stand or sit on the cushions. It is drawn user's attention to the orientation of the inflatable equipment installation in relation to the sun. The sliding surface of the product shall not face to the sun as sun shine can glare the children's eyes when they are sliding down along the slide.

## Take down Instructions:

- Make sure all children exit the Water Slide.
- Make sure the Water Slide is free from foreign objects.
- Turn off the water supply, and empty water in the pool at the end.
- Turn the blower (air pump) "on/off" switch to off.
- Loosen string and detach the air fill tube from the blower.
- Allow the blower (air pump) to run about 30 minutes to dry the Water Slide. (Refer to picture A)
- After drying the Water Slide, turn off the blower (air pump). Unplug the blower (air pump) power cord
- Remove ground support stakes.
- Remove hose assembly. Carefully store hose assembly to avoid kinking.
- Let the Water Slide deflate entirely. It should deflate on its own within 5 minutes. (Refer to Picture B)
- After deflating the Water Slide entirely, fold it in half from both ends, and then fold it in half 2 more times from both sides, vertically to the first fold. (Refer to picture C and D)
- Roll it up tightly from the end opposite the air fill tube. (Refer to picture E and F)
- Slip carry bag over the folded-up Water Slide, and hose assembly, and then close the bag zipper. (Refer to picture G)
- Store the Water Slide and the Blower in a dry place for future use. Never leave either the Water Slide or the Blower outside in the rain when product is not in use.



## Maintenance:

- As this is an outdoor product, this inflatable is subject to wear and deterioration. Keep product properly maintained and watch for signs if fabric failure. Weak or torn surfaces must be repaired promptly.
- Seasonal inspection and maintenance should be conducted for any damage or leakage of the Water Slide.
- Tears or punctures on the slide surface, steps or other areas with laminated PVC materials can be repaired with the provided repair patches. Areas other than these can be patched by hand with a needle and strong household thread.
- The Water Slide can be cleaned by wiping it down with a mild detergent. Keep water away from the blower (air pump) at all times.
- Do not store the Water Slide when wet. Store the product and the blower inside in dry conditions when not in use.

## Safety Warning:

- Product is heavy. Use caution when lifting.
- Failure to follow the specified instructions may result in serious injury.
- Instruct children on proper use of this product. Do not use in a manner other than intended.
- Adult set-up and dismantling are required. Adult supervision is required at all times to ensure observation of all parts of the play area, all activity on the Water Slide and keeping the entrance free from obstruction at all times when in use. Never leave children unattended during play.
- The Water Slide may not be used outside during raining and / or lightning conditions or if winds exceed 25 MPH (40km/h). Sudden gusts of wind may lift the product off the ground.
- The Water Slide shall only be inflated with the provided electrical blower or with manufacturer specified replacement blower. GFCI (Ground Fault Circuit Interrupter) device needs to be used. Do not use extension cord and keep the blower and power cord away from water.
- Keep Water Slide at a safe distance (at least 2M) from fire, walls and other obstructions.
- Ensure that there is 1.8 m (6 ft.) obstacle free zone around the product, including the slide and overhead. The maximum fall height for the inflatable products will be different according to the size of the products, if for small size products, the height ranges from 35cm to 40 cm (13.78" to 15.75"), if for medium size of the products, the height ranges from 40cm to 45 cm (15.75" to 17.72"), if for large size products, the height ranges from 45cm to 55 cm (17.72" to 21.65"). The suitable fall height will be adopted for the products according to the different size of the products.
- Do not set-up, use, or expose the Water Slide and Electric Blower to any adverse outdoor weather conditions, such as, but not limited to: rain, thunder, lightning, hail, snow, high winds, and tomadoes. Avoid setting up and operating Water Slide and Electric Blower anywhere that these products could be potentially exposed to water.
- Do not set up the Water Slide on a slope or incline.
- Warning: keep away from fire. Keep fabric clear from all flame and ignition sources.
- The water slide should not be set up facing the sun as the glare may affect children sliding down.
- The Water Slide must be fully inflated before any children are allowed inside. Failure to do so will result in the slide being unstable with the risk of serious injury. The Water Slide must stay fully inflated until everyone is out.
- To prevent from overturning or otherwise becoming a hazard, check on the Water Slide at regular intervals while in use.

- Check stakes regularly during play to ensure they remain securely in the ground when using outdoors.
- If the Water Slide begins to deflate, remove all children and check for disconnection of power cord or for power outage.
- Keep children and pets away from the blower (air pump).
- To avoid injury, please ensure that the maximum occupancy is observed and controlled.
- It is recommended to separate larger children from smaller children when playing with the Water Slide.
- Ages and sizes of children playing in the Water Slide at the same time should be comparable. Not suitable for children under 3 years. Small parts may be swallowed.
- Individuals with head, neck, back or other muscular-skeletal injuries or disabilities, pregnant women, small infants and others who may be susceptible to injury from falls, bumps or sliding are not permitted in the Water Slide.
- To prevent choking, children may not enter the Water Slide while eating, drinking, or chewing anything in their mouth.
- Shoes, eyeglasses, jewelry and any hard or sharp objects that may cause injury must be removed before entering the Water Slide. Loose or baggy clothing, or clothing containing long cords should not be worn while playing on this product. If the product comes with Mega Slide, wearing socks, long sleeves, and long trousers is needed to guarantee SAFETY.
- Inappropriate activity is not permitted -No flipping, wrestling, running, or pushing allowed inside the Water Slide.
- Do not bounce on the edges, steps or on the slide. Do not jump off the side. Climbing or hanging on the walls, netting or exterior of the Water Slide is not allowed.
- One person at one platform at a time, and only one person should slide down the slide at a time to avoid possible injury.
- In case of injury, contact a physician immediately.
- This is not an aquatic toy. Do not use in water.
- Do not drag on concrete or other rough surfaces.
- The carrying bag is for packaging use only and is not a toy.
- Unauthorised modifications to this product are not allowed.
- To reduce the risk of fire or electric shock, do not use the blower (air pump) with any solid-state speed control device.
- Product should be regularly checked for potentially unsafe conditions such as damaged cord, plug, housing, or parts. If such damage is found, the Water Slide should not be used until properly repaired.
- Keep pets off and away from the Water Slide and Blower.
- Do not attach items to the Water Slide that are not specifically designed for use with the inflatable device, such as, but not limited to, jump ropes, clotheslines, pet leashes, cables, and chains as they have the potential to cause strangulation hazard.
- Keep the area around the product clean, and clear of objects, to prevent slips and falls.
- Do not leave product inflated overnight.
- Do not jump off the slide.
- Do not grab or hang on to the arch while sliding. Doing so may damage or tear the arch and could cause injury.
- Do not stand on the top of the slide, on the slide rails, or on the slide itself.
- To avoid possible serious injury, the sliding path and landing area must be clear of all obstacles and other users before sliding.
- Climb up the climbing wall of the slide and sit at the top of the slide with your feet pointing down the slide. Scoot forward and slide down the slide feet first.
- Only slide down feet first and never slide down head first to avoid the risk of a serious injury or death.



Do not touch the two sides of the slide



Never slide down head first

- Children are required to slide down with proper posture ( refer to the following pictures) when playing on the product with slide.

1



Sit on the platform  
Do not stand up



2



Cross your hands over  
chest before sliding down

or



Slide with arms  
UP on this slide



3



Sliding finish

- Children can drown in very small amounts of water. Empty the pool when not in use.
- Changes to the original toy shall be carried out according to the instructions of the retailer of the original toy.
- Change the water of paddling pool frequently (particularly in hot weather) or when noticeably contaminated.
- Warning! Never leave your child unattended-drowning hazard.

**NOTE 1:** While playing with "Water Slide", it is normal to see air bubbles rising from the pool floor.

**NOTE 2:** While playing with "Water Slide", it is normal for some water to leak into the interior of the slide. It is important to dry any water inside prior to storing the slide.

