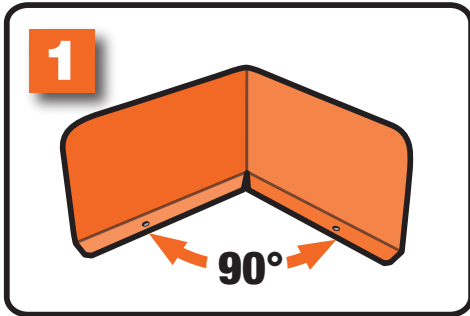


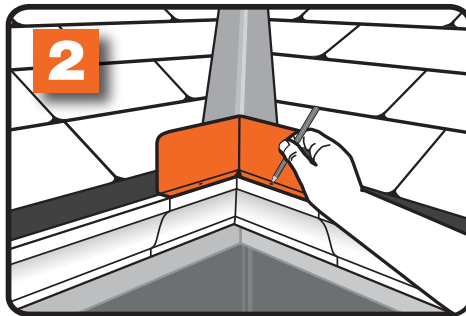
Tools



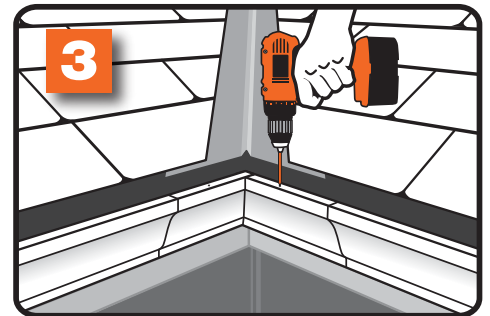
Drill, 1/8 in. drill bit, aluminum or stainless steel sheet metal screws, screw driver, caulk



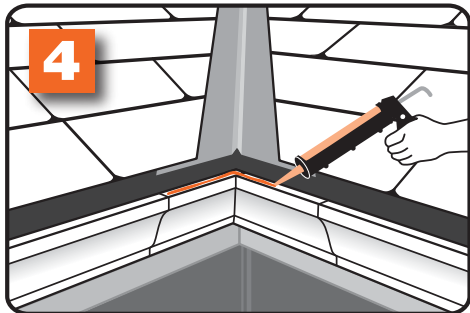
Bend the SplashShield™ along the center crease into a 90° shape.



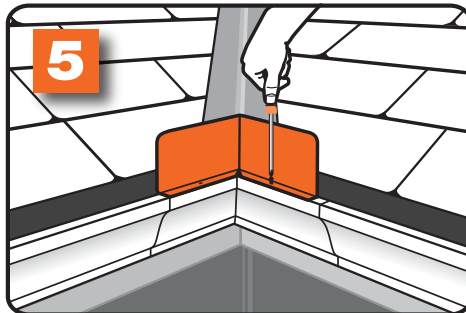
Hold SplashShield™ in place and mark the holes.



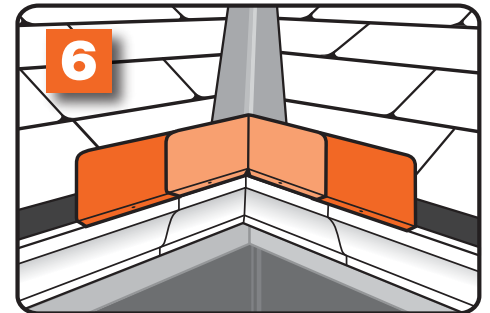
Drill holes as marked with 1/8" drill bit.



Apply a bead of caulk to the gutter where SplashShield™ will be fastened



Fasten with aluminum screws on aluminum gutter; stainless steel screws on steel gutter



For more protection, cut a SplashShield™ in half, then attach the halves to each side



CAUTION!

Working above grade is inherently dangerous, be sure that proper fall protection measures are in place. When working with power tools and sheet metal, gloves and eye protection are absolutely required.

These installation guidelines are for use with typical or standard applications. It is always recommended to seek advice from a licensed professional, and to check with your local building inspector or building permit office for approvals and possible variations that may apply.