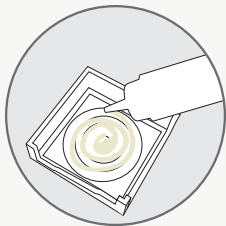


Installation Instructions

Instrucciones de Instalación

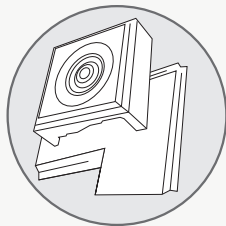


Step 1

Place bead of caulk behind Minute Molding.

Paso 1

Coloque sellante detrás del Minute Molding.

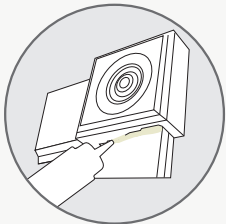


Step 2

Snap square over corner of existing door/window casing.

Paso 2

Coloque el molde sobre la esquina del marco de la puerta/ventana.

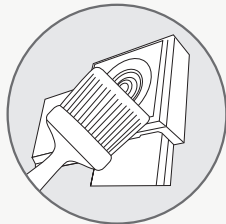


Step 3

Use caulk around edges to secure in place. Allow to dry.

Paso 3

Use sellante en torno a los bordes para fijarlo. Deje secar.



Step 4

Prime, paint and enjoy!

Paso 4

Prepare, pinte y ¡disfrute!