



DESIGNED FOR NEST HELLO WITH SPECIAL ELECTRONICS TO PROTECT YOUR BELL

**THANK YOU FOR YOUR PURCHASE. PLEASE READ THIS CAREFULLY. YOUR OHMKAT HAS EXCLUSIVE SELF TEST CAPABILITY AND SPECIAL PROTECTIVE ELECTRONICS. OHMKAT IS ALSO VERY ROBUST AND RARELY FAILS. IF YOU EXPERIENCE ANY ISSUE ASK US ABOUT THE SELF TEST CAPABILITY. IT IS EASY TO TEST AND GIVES YOU IMMEDIATE PEACE OF MIND. THE SPECIAL ELECTRONICS PROTECTS THE BELL IF IT LOCKS ITSELF OR HAS A CURRENT SURGE. WRITE TO US AT [SERVICE@OHMKAT.COM](mailto:SERVICE@OHMKAT.COM). IF WE CANNOT RESOLVE YOUR PROBLEM, WE WILL REPLACE YOUR UNIT OR GIVE YOU A REFUND.**

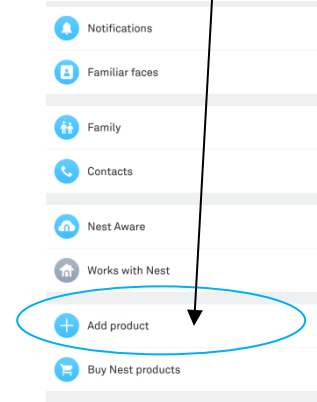
PLEASE DO NOT PLUG IN THE TRANSFORMER BEFORE FINISHING OTHER STEPS. **START AT STEP 1.**



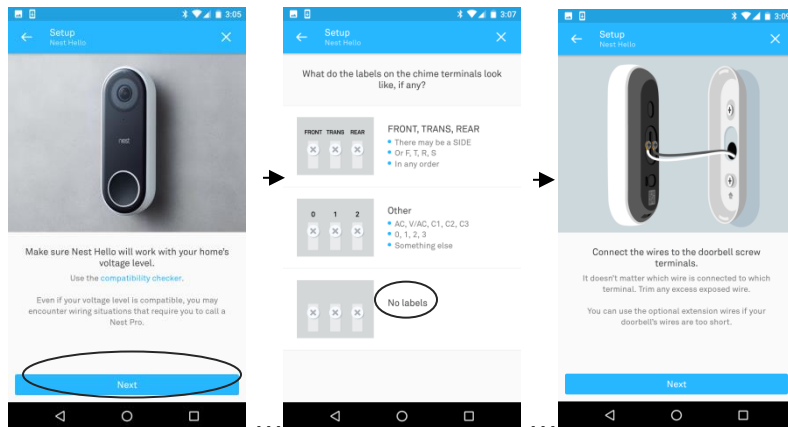
**1 START HERE**

1. FIND A LOCATION WHERE YOU WANT TO INSTALL YOUR NEW VIDEO DOORBELL.
2. LOCATE A POWER SOCKET WITHIN 12 FEET THAT YOU WANT TO USE. YOU CAN ALSO USE AN EXTRA LENGTH OF GENERAL DOORBELL WIRES 20/22 AWG, OR OHMKAT EXTENSION CABLE OR A POWER STRIP TO EXTEND RANGE FURTHER.
3. **LED HAS 3 STATES.**
  - OFF
  - **FULL BRIGHT** (FULL POWER STATE)
  - **DIM** (BELL HAS LOCKED ITSELF OR THERE IS A SHORT ON THE LINE. DISCONNECT/RESET FOR 2 MINUTES).

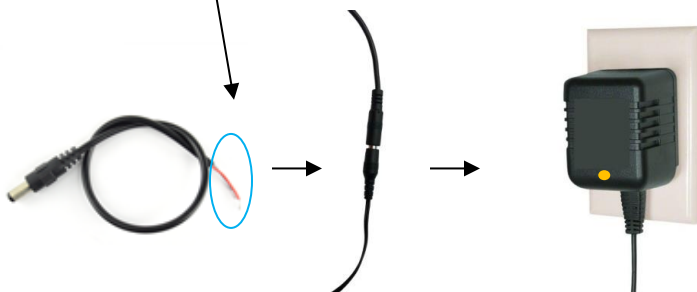
**2 GET THE NEST APP FOR YOUR PHONE. AND ADD NEST HELLO IN THE NEST APP. THE ADD PRODUCT LINK MAY BE IN SETTINGS.**



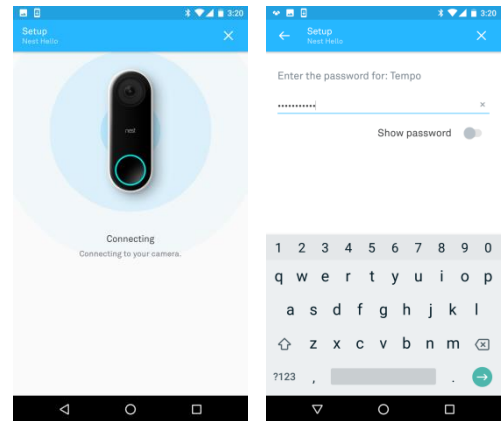
**3 SINCE WE ARE USING A POWER SUPPLY TO DIRECTLY POWER THE DOORBELL, YOU WILL PRESS NEXT OR A VALID OPTION SHOWN TO NAVIGATE THE APP SCREENS TILL YOU GET TO THE SCREEN WHERE YOU MAKE DOORBELL CONNECTIONS.**



ONCE ON THIS SCREEN, **CONNECT OHMKAT CONNECTOR CABLE TO NEST HELLO TERMINAL END POINTS.** YOU CAN CONNECT EITHER WIRE TO EITHER TERMINAL. THEN CONNECT MALE CONNECTOR TO THE FEMALE CONNECTOR. PLUG IN THE TRANSFORMER. **(YOU DON'T NEED TO USE THE CHIME CONNECTOR).**



**4 ONCE YOU SWITCH ON THE TRANSFORMER, THE BLUE LIGHT ON THE NEST HELLO BELL WILL LIGHT UP. IT MAY TAKE 30 SECONDS TO LIGHT UP. NOW FINISH CONFIGURING THE DOORBELL AS PER THE NEST APP. YOU WILL BE ASKED FOR YOUR WIFI NETWORK AND ITS PASSWORD. ONCE THESE STEPS ARE DONE YOUR INSTALLATION IS COMPLETE.**



THIS IS A COMPLETE POWER SUPPLY. YOU DO NOT NEED TO ADD ANYTHING ELSE. REMEMBER OHMKAT RARELY FAILS – AND YOU CAN SELF TEST. PLEASE CALL (732-876-3034) OR WRITE([service@ohmkat.com](mailto:service@ohmkat.com)).

