

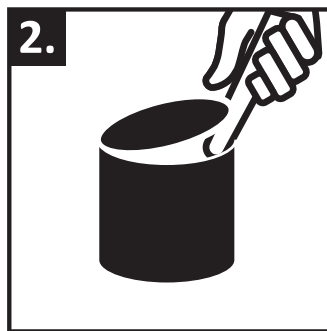


Thank you for your purchase of TerraFlame gel fuel.  
We recently changed our name from SunJel.  
Don't worry, though! Same Company.  
Same odorless formula. Same beautiful flame.

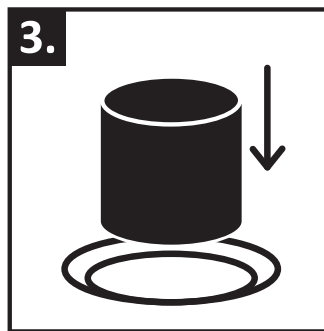
## LIGHTING INSTRUCTION:



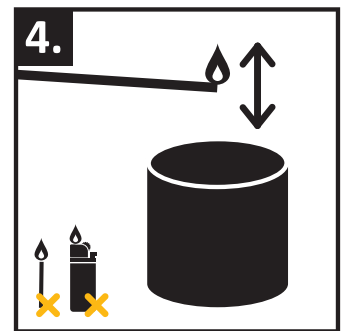
1. Check to ensure the lid is sealed then gently shake can before opening.



2. Use a paint can lid tool or flat head screw driver to remove lid  
**WARNING:** Pressure may build inside the can. Remove lid carefully. If lid is to be reused, rinse fuel from lid with water and store.



3. Carefully place the newly opened can of fuel in the fire bowl



4. Using an extended lighter or fireplace match, ignite fuel 1-2 inches above fuel can. Lighter need not come in contact with gel for proper ignition.

**Note: Label removal is not required as cans are pre-printed.**



For Safety, we recommend the use of the Sunjel 14", Stainless Steel, Magnetic lid tool for removing and returning the lid to your SunJel fuel. The narrow end helps you safely remove the lid. At the end of your activity, use the magnetic end to return to the top of the canister to completely and safely snuff the flames. Be sure to wait at least 10 minutes once flames have been extinguished before removing the can from the firespace device. Appropriate caution should always be taken any time fire and flammable liquids are present.

# WARNINGS FOR USE OF TERRAFLAME GEL FUEL (PREVIOUSLY SUNJEL)

Both Pure and Citronella Versions



Please read safety instructions thoroughly before using

**WARNING! FLAMMABLE!  
EYE IRRITANT! SKIN IRRITANT!**

---

**IMPROPER USE AND HANDLING MAY RESULT IN PROPERTY DAMAGE, SERIOUS  
INJURY OR DEATH!  
HARMFUL IF SWALLOWED!**

**Note cans are not completely filled due to pressure buildup during shipping.  
Still provides a 2-3 hour burn time.**

---

## **READ AND FOLLOW ALL INSTRUCTIONS.**

### **PROPER PRODUCT USE:**

USE ONLY IN A WELL-VENTILATED AREA. DO NOT INHALE FUMES.  
DO NOT SMOKE NEAR FUEL GEL.  
KEEP AWAY FROM OPEN FLAMES SUCH AS PILOT LIGHTS OR ANY  
OBJECT THAT SPARKS SUCH AS ELECTRIC MOTORS.  
DISCHARGE STATIC ELECTRICITY BEFORE HANDLING.  
WEAR EYE PROTECTION DURING IGNITION PROCESS.  
KEEP OUT OF THE REACH OF CHILDREN. DO NOT TOUCH OR MOVE  
DEVICE WHILE FLAMES ARE PRESENT.  
ALLOW 20 MINUTES FOR DEVICE TO COOL BEFORE HANDLING.

TERRAFLAME GEL FUEL CANISTERS ARE DESIGNED FOR SINGLE USE  
ONLY. **NEVER ATTEMPT TO REFILL.**  
DO NOT USE TERRA FLAME HOME OR TF ESSENTIALS DEVICES WITH  
ANY OTHER FUEL BRAND THAN TERRAFLAME GEL FUEL.

KEEP CHILDREN AND PETS SAFELY CLEAR OF DEVICE PARTICULARLY  
WHEN FLAMES ARE PRESENT.  
SEVERE BURNS OR INJURY MAY RESULT FROM IMPROPER CONTACT  
WITH DEVICE OR FUEL GEL.  
USE ONLY AN EXTENDED LIGHTER OR LONG FIREPLACE MATCH TO  
IGNITE GEL FUEL.  
DO NOT OBSTRUCT OR INHIBIT FLAME BY PLACING ANYTHING ON  
OR ABOVE DEVICE.  
DO NOT USE FOR COOKING.  
DO NOT MIX TERRAFLAME GEL FUEL WITH ANY OTHER SUBSTANCE.  
USE LID SNUFFER TOOL TO EXTINGUISH FLAME.

### **FIRST AID TREATMENT:**

FUEL CONTAINS ISOPROPANOL.  
IF SWALLOWED CALL POISON CONTROL CENTER AT  
**800-222-1222**, 911, HOSPITAL OR DOCTOR IMMEDIATELY.  
IF SWALLOWED DILUTE BY DRINKING LOTS OF WATER.  
**DO NOT INDUCE VOMITING.**  
IF FUEL SPILLS ON SKIN IMMEDIATELY WASH WITH SOAP AND  
WATER.  
IF FUEL GETS IN EYES RINSE WITH COOL WATER.  
IF INHALED MOVE INTO FRESH AIR IMMEDIATELY.  
IF FUEL SPILLS ON CLOTHES REMOVE AS SOON AS POSSIBLE AND  
WASH.

### **IF SYMPTOMS FROM EXPOSURE PERSISTS CONSULT A DOCTOR IMMEDIATELY.**

IF FIRE IS EXTINGUISHED BEFORE FUEL IS GONE, LET STAND FOR AT  
LEAST 10 MINUTES BEFORE ATTEMPTING TO REIGNITE.  
ONCE CAN IS COOL, FOLLOW TERRAFLAME GEL FUEL IGNITION  
PROCEDURES.

### **IF SPILL RESULTS IN FIRE, USE CO2 EXTINGUISHER OR BAKING SODA TO EXTINGUISH FLAMES.**

Active Ingredients (Pure and Citronella Versions): Isopropanol,  
Ethanol, Cyclohexylamine,

Citronella Additional Ingredients: Geraniol 0.6%, Citronella 0.012%

This product has not been registered by the US EPA.

---