

EASY ASSEMBLY AND OPERATION INSTRUCTIONS

23SV24195 Beach Santa



READ AND SAVE THESE INSTRUCTIONS FOR FUTURE REFERENCE

IF ANY PART IS MISSING OR BROKEN, DO NOT ATTEMPT TO ASSEMBLE THE PRODUCT AND CONTACT SVI CUSTOMER SERVICE FROM 8:30 AM TO 5:30 PM PST AT 1-855-428-3921, EMAIL CUSTOMERSERVICE@SVIUS.COM, OR CALL HOME ACCENTS HOLIDAY CUSTOMER SERVICE FROM MON-FRI 8:00 AM TO 7:00 PM AND SAT 9:00 AM TO 6:00 PM EST AT 1-855-HDHOLIDAY (1-855-434-6543).

IMPORTANT TIPS:

- Ensure that the item's adapter is plugged in at the function control box and in the wall.
- Ensure that the switch on the function control box is on the desired setting.
- If not functioning properly (body and head don't turn, mouth doesn't move), ensure that cables are connected correctly, according to the instruction sheet.
- Be sure nothing is blocking movement or caught in moving parts.
- Ensure that the floor or surface that the item sits on is flat and level.

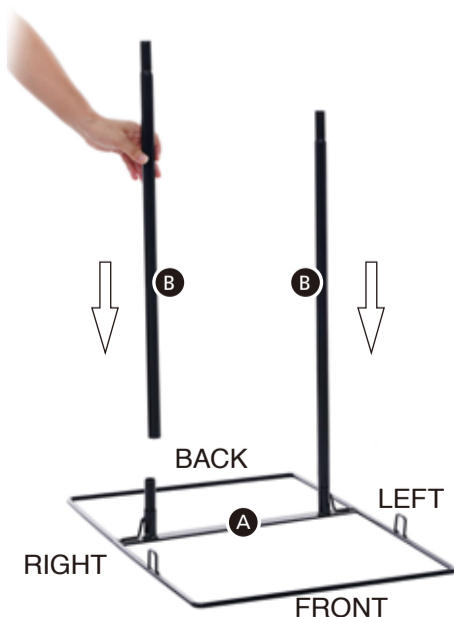
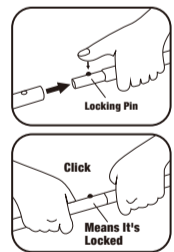
- Ensure that the volume is not all the way down.
- If the item still does not work, contact SVI Customer Service from 8:30 am to 5:30 pm PST at 1-855-428-3921, email customer-service@svius.com, or call Home Accents Holiday Customer Service from Mon-Fri 8:00 am to 7:00 pm and Sat 9:00 am To 6:00 pm EST at 1-855-HDHOLIDAY (1-855-434-6543).

PARTS LIST

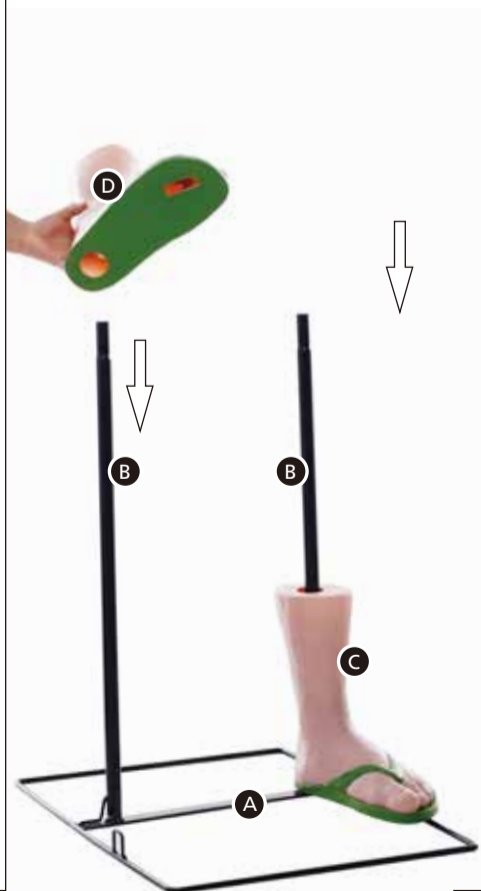
- A. Base x 1
- B. Poles x 2
- C. Left Foot x 1
- D. Right Foot x 1
- E. Pants x 1
- F. Lower Body Frame x 1
(Note: The (F) Lower Body Frame can be found inside of the (H) Body)
- G. Hip Hoop x 1
- H. Body x 1
- I. Head x 1
- J. Shirt x 1
- K. Left Arm Frame x 1
- L. Right Arm Frame x 1
- M. Foam Arm Tubes x 2
- N. Left Hand with Coconut x 1
- O. Right Hand x 1
- P. Undershirt x 1
- Q. Adapter x 1
Input: 100-240V 50/60Hz
Output: 5.9V 2A



NOTE: Throughout the instructions, Right and Left are relative to the character.

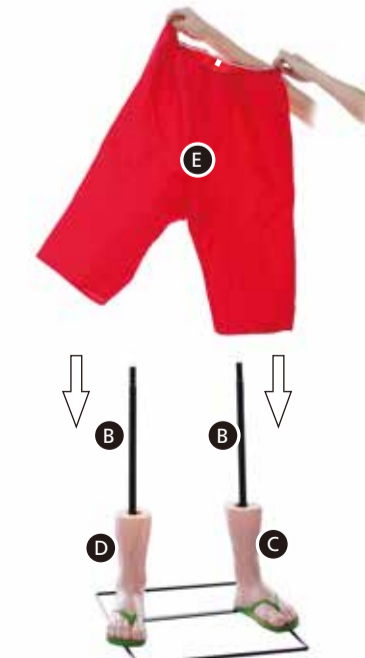
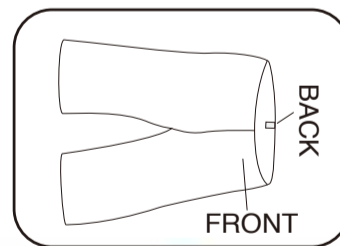


1.1

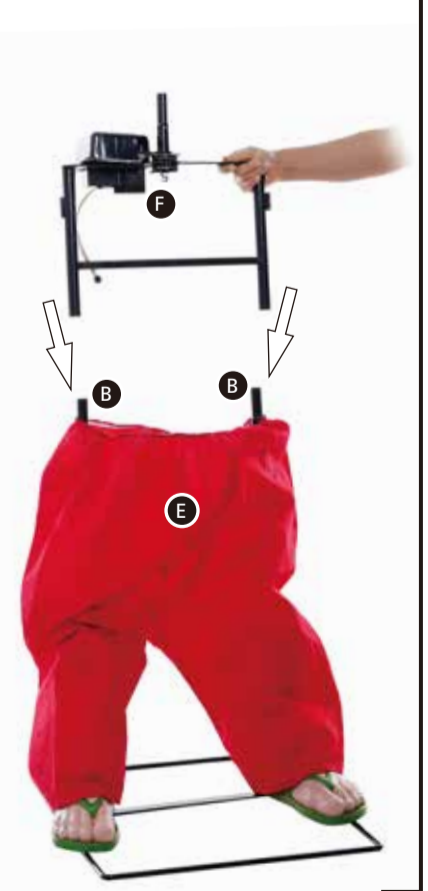


1.2

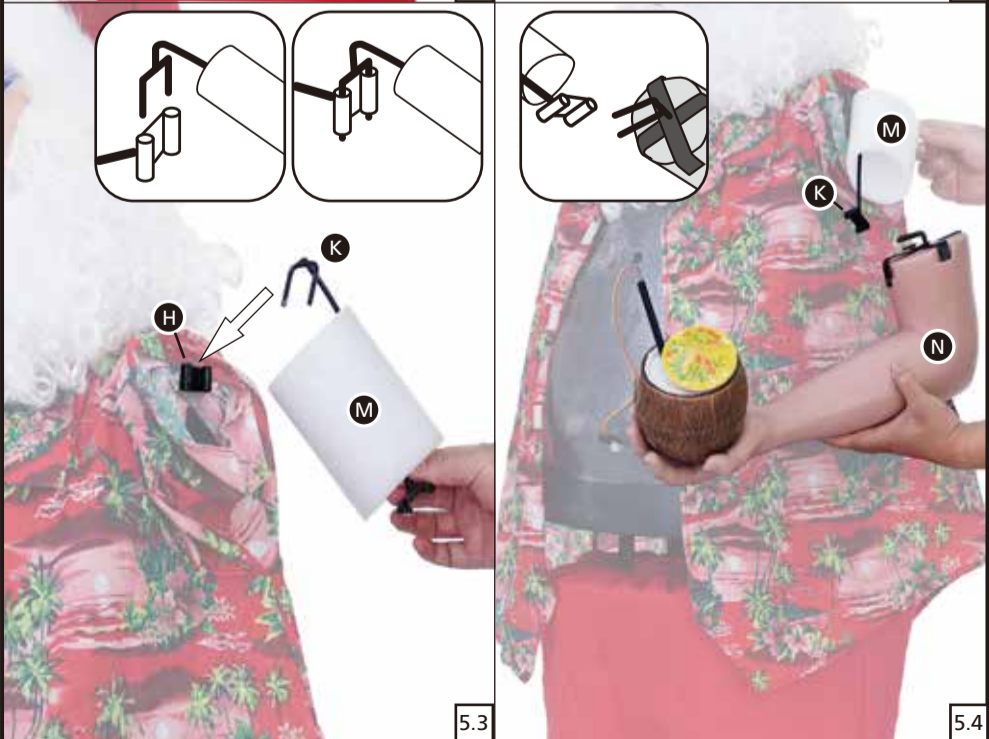
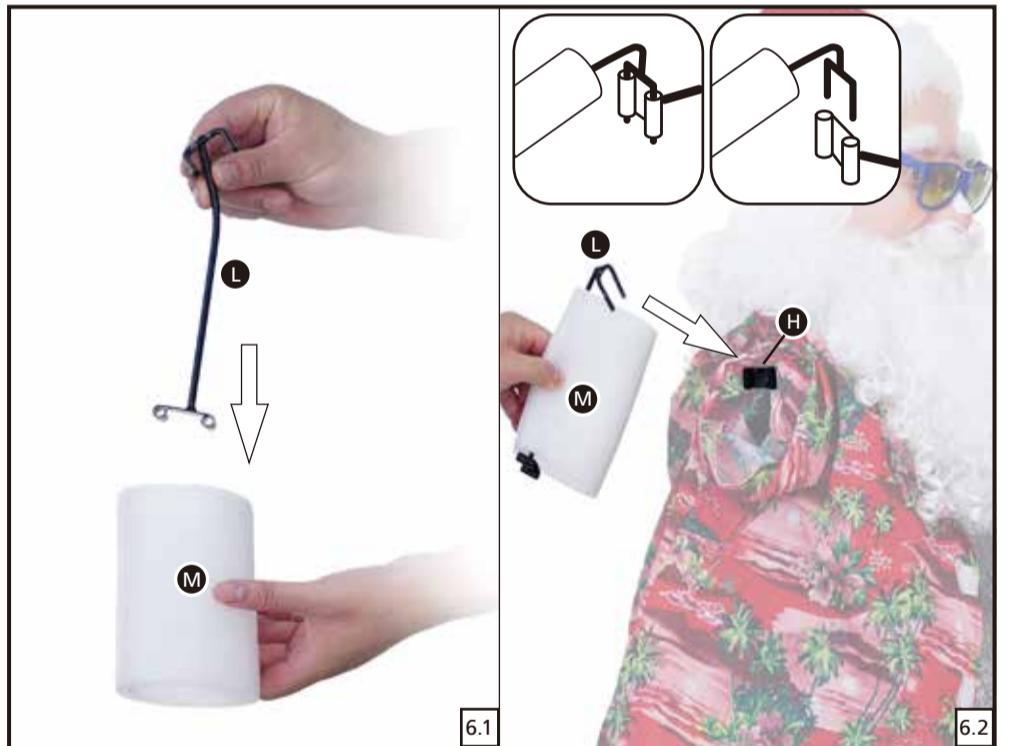
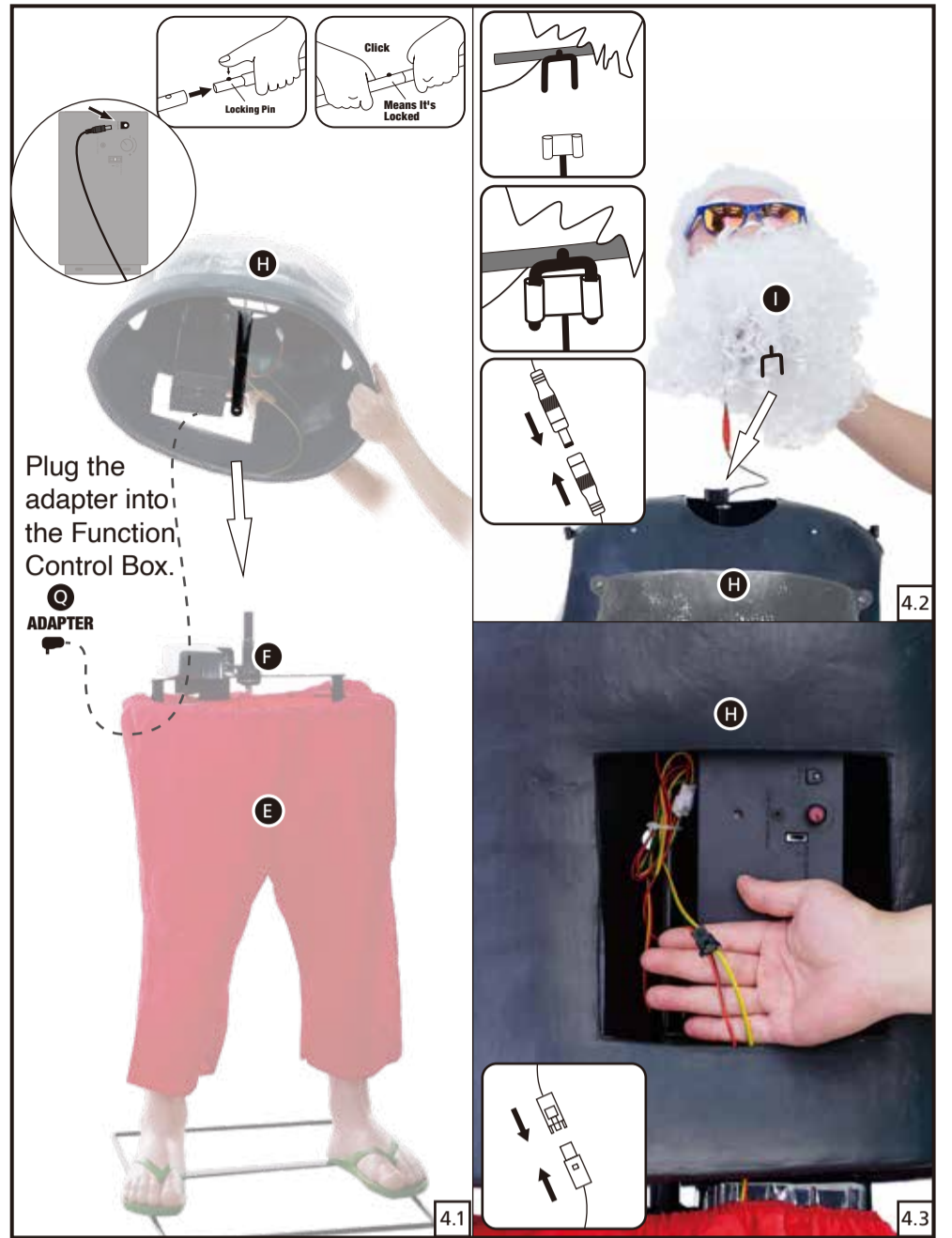
NOTE: Slide the (E) Pants onto the assembly with the tag at the back of the (E) Pants facing towards the back.



2.1



2.2



NOTE: Pull the IR Sensor through the front of the (H) Body, through the hole available in the (P) Under-shirt, and then secure the IR Sensor to the (J) Shirt using the available hook and loop closures.



YOUR BEACH SANTA IS NOW FULLY ASSEMBLED. PLUG IN AND TURN ON TO LET THE FUN BEGIN!



IR SENSOR
Be sure nothing is blocking the sensor.

OPERATION INSTRUCTIONS:

1. Plug the power adapter into a standard power outlet and adjust the settings on the Function Control Box, located in the (G) Body, as desired.

2. Settings:

Sensor /Détecteur	This switch mode will activate sound and animation when the Infra-red (IR) sensor is activated and will operate for 1 audio-cycle with each activation. The Infra-red (IR) sensor has a range of up to 2 m/6.5 ft. and will activate when someone comes within an 80-degree angle from left-to-right, as well as from above and below.
○	This switch mode allows the item to be activated only if triggered by using a Step Here Try Me Activation Pad (Not Included). The item will operate for one audio cycle with each Try Me activation. Otherwise, the item will stay off.
	This switch mode will continuously operate sound and animation of the item.
⌚	Raise or lower the volume using the volume control turn dial, turn all the way down to turn the volume off .

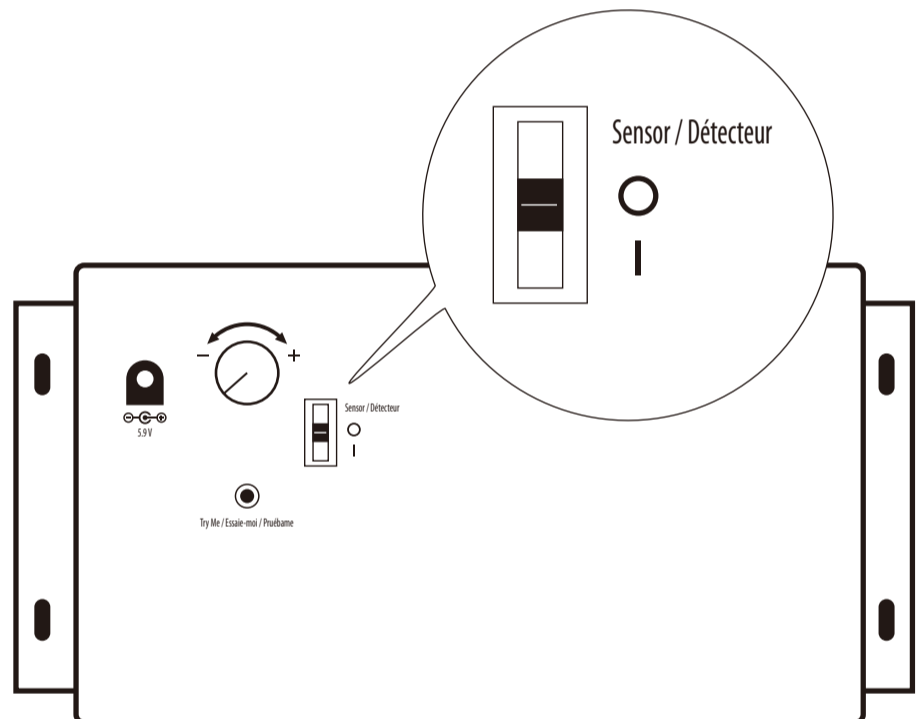
WARNING

This item is not a toy and should be used for decoration only. This item contains small parts that can be a choking hazard. Keep all plastic and wire parts away from children.

1. Please use the adapter supplied by manufacturer.
2. Please assemble item according to instructions. Connect all wires according to matching color.
3. Children should be supervised by adults. Item should not be grabbed, as it becomes a tipping hazard. Keep flammables away from the adapter, as it heats up during operation. Please view all instructions carefully before assembling. Save this instruction sheet for future reference.

CARE AND STORAGE INSTRUCTIONS

For best performance operate your item indoors. When not in use, store this product in its original packing. Keep away from heat and moisture.



This device complies with Part 15 of the FCC Rules. Operation is subject to the following two conditions: (1) This device may not cause harmful interference, and (2) this device must accept any interference received, including interference that may cause undesired operation.

CAUTION: Changes or modifications not expressly approved by the party responsible for compliance could void the user's authority to operate the equipment.

NOTE: This equipment has been tested and found to comply with the limits for a Class B digital device, pursuant to Part 15 of the FCC Rules. These limits are designed to provide reasonable protection against harmful interference in a residential installation. This equipment generates, uses, and can radiate radio frequency energy and, if not installed and used in accordance with the instructions, may cause harmful interference to radio communications. However, there is no guarantee that interference will not occur in a particular installation. If this equipment does cause harmful interference to radio or television reception, which can be determined by turning the equipment off and on, the user is encouraged to try to correct the interference by one or more of the following measures: Reorient or relocate the receiving antenna, Increase the separation between the equipment and receiver. Connect the equipment into an outlet on a circuit different from that to which the receiver is connected. Consult the dealer or experienced radio/TV technician for help.

CAN ICES-003(B)/NMB-003(B)