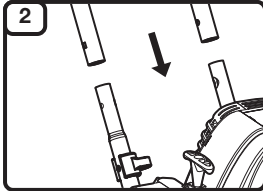


**1**

Read the operator's manual thoroughly before operating the unit. Follow all warnings and safety instructions. This fast guide is intended as a reference for users that have already read the operator's manual and are familiar with the necessary safety precautions.

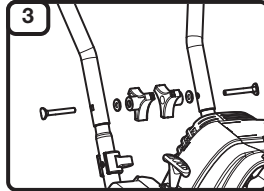


**2**

**ASSEMBLY**

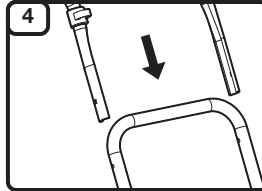
Slide the middle shaft onto the lower shafts.

**NOTE:** Keep the throttle cable and wire assembly to the front of the unit.



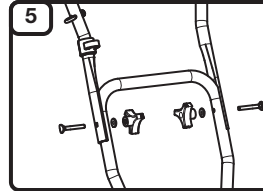
**3**

Align the holes on the middle shaft with the holes on the lower shafts. Insert a bolt into each of the aligned holes. Install a washer onto each bolt. Install a knob onto each bolt. Tighten the knobs securely.



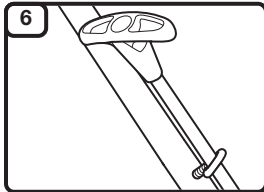
**4**

Position the upper shaft onto the middle shaft. Make sure the "V" bend in the handle is pointing up (toward the front of the unit) and that the throttle control is on the right side when the operator is standing in the operating position.



**5**

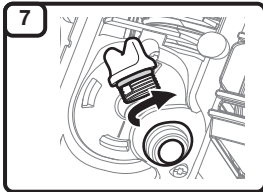
Align the holes on the upper shaft with the holes on the middle shaft. Insert a bolt into each of the aligned holes. Install a washer onto each bolt. Install a knob onto each bolt. Tighten the knobs securely.



**6**

Pull the starter rope and run it through the eye hook. Insert the throttle cable and wire assembly into the cable restraints on the upper and lower shafts.

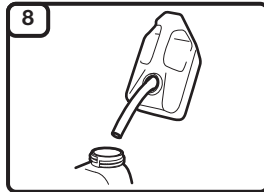
**NOTE: DO NOT** bend or pinch the throttle cable or wire assembly.



**7**

Unscrew the oil fill plug. Pour the entire container of oil into the oil fill hole. Reinstall the oil fill plug.

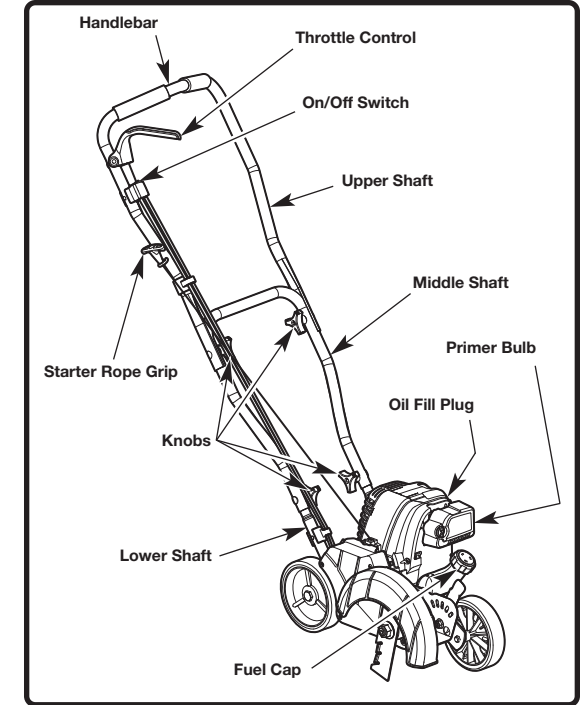
**NOTE: DO NOT** overfill. Never add oil to the fuel tank. **DO NOT** mix oil with gasoline.



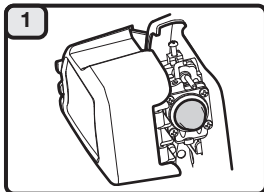
**8**

Slowly remove the fuel cap. Fill the fuel tank. Reinstall the fuel cap. Move the unit at least 30 ft. (9.1 m) from the fuel container and the fueling site before starting the engine.

**NOTE: Use fresh unleaded gasoline (less than 30 days old).**



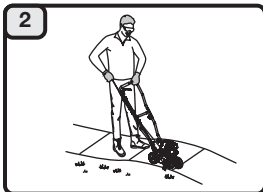
**NO ASSEMBLY TOOLS REQUIRED**



**1**

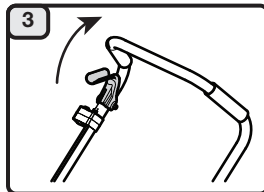
**STARTING**

Slowly press and release the primer bulb **10 times**.



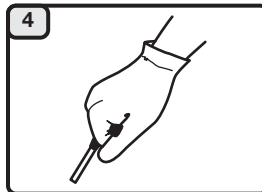
**2**

Stand in the starting position. Hold the handlebar firmly with one hand. Hold the starter rope with the other hand. Use one foot to hold the wheels in place. Tilt the unit back slightly to bring the blade off the ground.



**3**

Squeeze and hold the throttle control.



**4**

Continue to hold the throttle control. Pull the starter rope with a controlled and steady motion until the unit starts.

**DIDN'T START?**

Repeat the starting instructions.

If the unit still fails to start, refer to the operator's manual for additional starting and troubleshooting information.

