

**FR Series****Fire Rated Wall Access Doors**

**Doors** are Fire Rated by Underwriters Laboratories Inc., for 1-1/2 hours, "B" Label, ANSI-UL 10B standard, and CAN/ULC S104 for 2 hours in walls. Door has a heavy duty spring closer to assure positive latching when panel closes. ***This door is for wall installation only.***

**Door and Frame** are fabricated from 16 gage, galvanized steel with a white prime coat finish.

**Door** has a heavy duty spring to assure positive latching.

**Frame** is equipped with both masonry anchors and bolt holes to facilitate installation in all types of wall construction.

**Concealed Hinge** operates completely out of sight so that only the door and frame is visible.

**Exterior Latch** is recessed and is operated using a ring attached to the sliding bolt.

**Interior Latch Release Slide** is included enabling door to be opened from the inside.

**Finish** is a white prime coat suitable for painting.

**Guide Specification**

Provide Elmdor® FR Series, Fire Rated Access Doors (specify model number and options). Access door and frame shall be fabricated from 16 gage, galvanized steel with a white prime coat finish. Hinge shall be concealed type. Door shall have a heavy duty spring to provide positive latching when closed and an interior latch release slide enabling door to be opened from the inside. Exterior latch shall be recessed and operated using ring attached to the sliding bolt. Finish shall be a white prime coat suitable for painting.



Member of U.S. Green  
Building Council

**FR**

Revised: 7/18/16

Recyclable  
Product

**MODEL NUMBER AND OPTIONS SELECTION**
**BASE MODEL NUMBER**
☐ FR Fire Rated Access Door

**Suffix Options**
☐ -CL Cylinder Lock (one per door)  
☐ -SS Stainless Steel Construction  
 (Type 304 No. 4 Satin Finish)

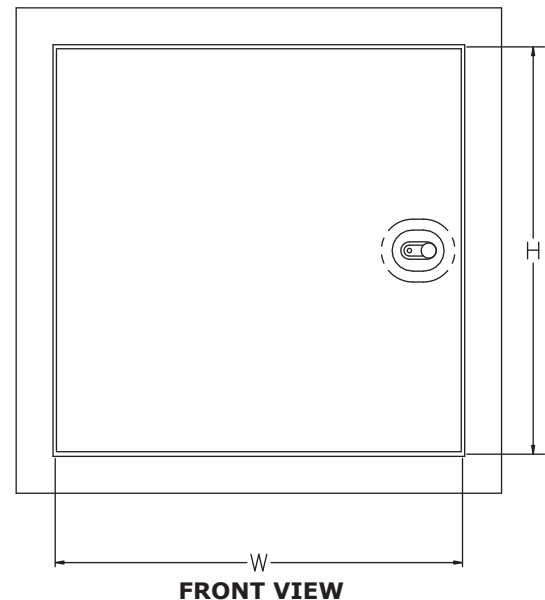
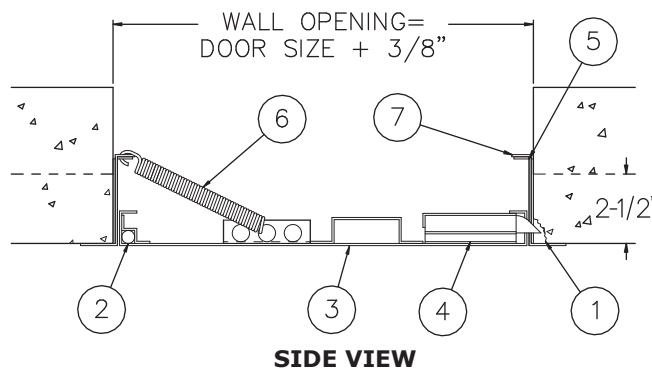
**STANDARD AVAILABLE SIZES**

Special sizes available upon request.

NOMINAL DOOR SIZE (W X H)	WALL OPENING (minimum required)	LATCHES	WEIGHT
FR 8" x 8"	8-3/8" x 8-3/8"	1	6 lbs.
FR 10" x 10"	10-3/8" x 10-3/8"	1	7.5 lbs.
FR 12" x 12"	12-3/8" x 12-3/8"	1	9 lbs.
FR 12" x 18"	12-3/8" x 18-3/8"	1	10.5 lbs.
FR 12" x 24"	12-3/8" x 24-3/8"	1	13 lbs.
FR 14" x 14"	14-3/8" x 14-3/8"	1	10 lbs.
FR 16" x 16"	16-3/8" x 16-3/8"	1	12.5 lbs.
FR 18" x 18"	18-3/8" x 18-3/8"	1	15 lbs.
FR 20" x 20"	20-3/8" x 20-3/8"	1	18 lbs.
FR 22" x 22"	22-3/8" x 22-3/8"	1	22 lbs.
FR 22" x 30"	22-3/8" x 30-3/8"	2	28 lbs.
FR 24" x 24"	24-3/8" x 24-3/8"	2	24.5 lbs.
FR 24" x 36"	24-3/8" x 36-3/8"	2	33 lbs.
FR 24" x 48"	24-3/8" x 48-3/8"	2	42 lbs.
FR 30" x 30"	30-3/8" x 30-3/8"	2	33.5 lbs.
FR 32" x 32"	32-3/8" x 32-3/8"	2	35 lbs.
FR 36" x 36"	36-3/8" x 36-3/8"	2	43 lbs.
FR 36" x 48"	36-3/8" x 48-3/8"	2	74 lbs.

**NOTES:**

1. CHIP OUT MASONRY TO CLEAR BOLT COVER
2. CONCEALED HINGE
3. DOOR
4. RECESSED LATCH
5. INTERIOR LATCH RELEASE SLIDE
6. CLOSING SPRING
7. FRAME



Dimensions are subject to manufacturer's tolerance of plus or minus 1/4". Elmdor/Stoneman assumes no responsibility for use of void or suspended data. Please visit [www.elmdorstoneman.com](http://www.elmdorstoneman.com) for most current specifications. © Copyright 2009 Elmdor/Stoneman, City of Industry, CA, A Division of Acorn Engineering Company.

**SELECTION SUMMARY & APPROVAL FOR MANUFACTURING**

Model Number & Options \_\_\_\_\_ Quantity \_\_\_\_\_  
 Company \_\_\_\_\_ Date \_\_\_\_\_  
 Contact \_\_\_\_\_ Title \_\_\_\_\_  
 Approval for Manufacturing/Signature \_\_\_\_\_

**FR**

Revised: 7/18/16