

SkyBase Model:Lexington

#55032 Bronze

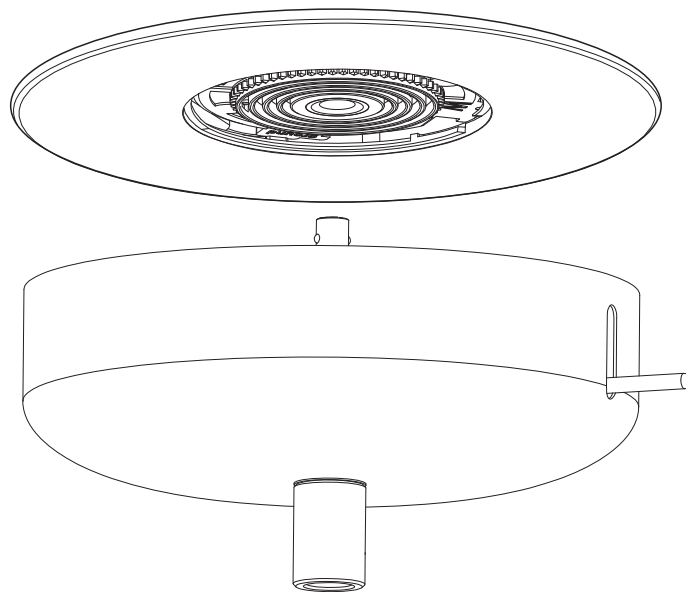
#55049 Brushed Nickel

#55056 Chrome



USER MANUAL

Plug & Play Lighting Base
for Cord or Rod Suspended Fixtures



Questions, problems, missing parts? Before returning, contact

CUSTOMER SERVICE

9:00 am - 5:00 pm EST Monday-Friday

support@skyplug.com 1-866-885-4649

Installation videos available on www.skyplug.com

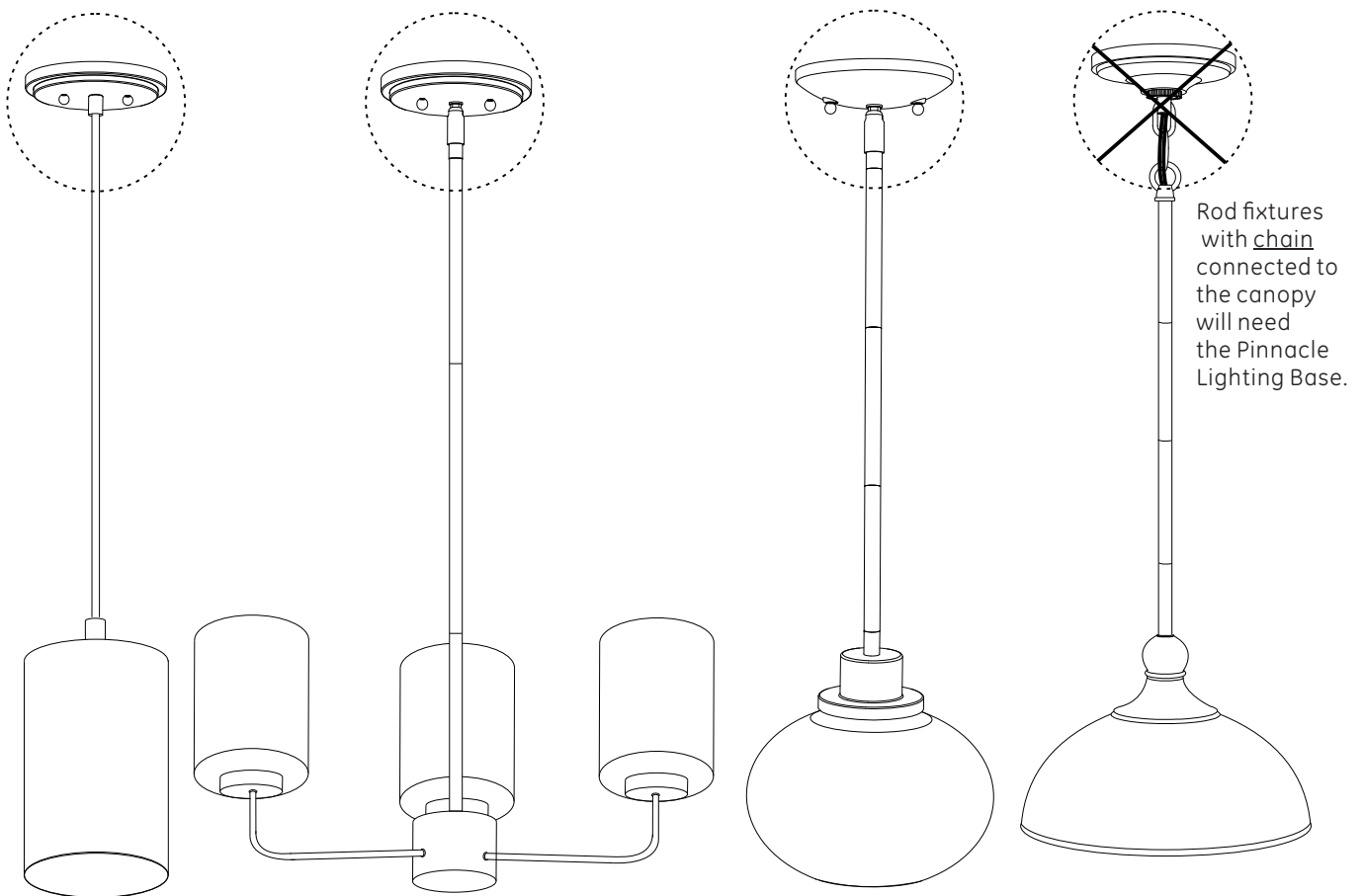


NV03-20190731

Thank you for purchasing the **Lexington Plug & Play Lighting Base** for Cord or Rod Suspended Fixtures

Once installed, your cord or rod suspended light fixture will plug in and out of the ceiling similarly to the way you plug and unplug a table lamp! Imagine the advantages of quickly taking down a light fixture for spring cleaning, to paint the ceiling, redecorate, or to change fixtures for holidays or special occasions. And all without rewiring!

The Lexington Lighting Base attaches to light fixtures that have cord or a rod connecting the fixture to the canopy.
If your light fixture has chain connected to the canopy, you will need the Pinnacle Plug & Play Lighting Base for Chain Suspended Lighting.



Get ready to Plug & Play!

Install SkyOutlet To Ceiling



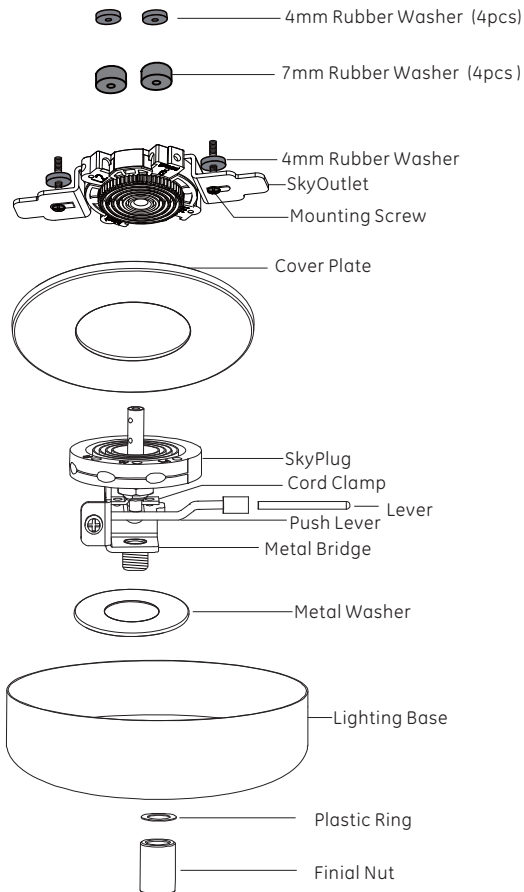
Attach Lexington Lighting Base to Fixture



Plug Fixture into SkyOutlet

WEIGHT: Supports rod fixtures up to 35 lbs, SVT cord fixtures up to 5 lbs, SJT cord fixtures up to 10 lbs .

Parts Info and Guidelines



CAUTION: Before beginning, disconnect power by turning off the circuit breaker or by removing the fuse at the fuse box. Please consult a qualified electrician if you are not certain of installation.

CAUTION: Make certain that your pre-existing outlet box is compliant with national and local electrical codes and ANSI/NFPA 70. All wiring must be in accordance with the National Electrical Code ANSI/NFPA 70 and local electrical codes. Please consult a qualified electrician if you are unfamiliar with wiring.

CAUTION: To reduce risk of electric shock, connect only to 3-wire, single-phase electrical supply systems (provided with Ground wire or equivalent protection system).

NOTE: SkyOutlet requires installation to the branch circuit (solid 12 or 14 AWG wire) and should be installed by a qualified person or electrician.

NOTE: A UL listed cover plate is included to place over the SkyOutlet when the light fixture is not installed. The fixture may be unplugged and removed for maintenance, cleaning, etc.

SPECIFICATION: Rated up to 125V, 15A. Supports rod fixtures up to 35 lbs, SVT cord fixtures up to 5 lbs, SJT cord fixtures up to 10 lbs. Indoor use and dry locations only.

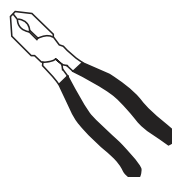
Tools Needed (Not Supplied)



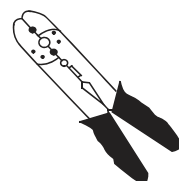
Phillips Screwdriver#1



Phillips Screwdriver#2



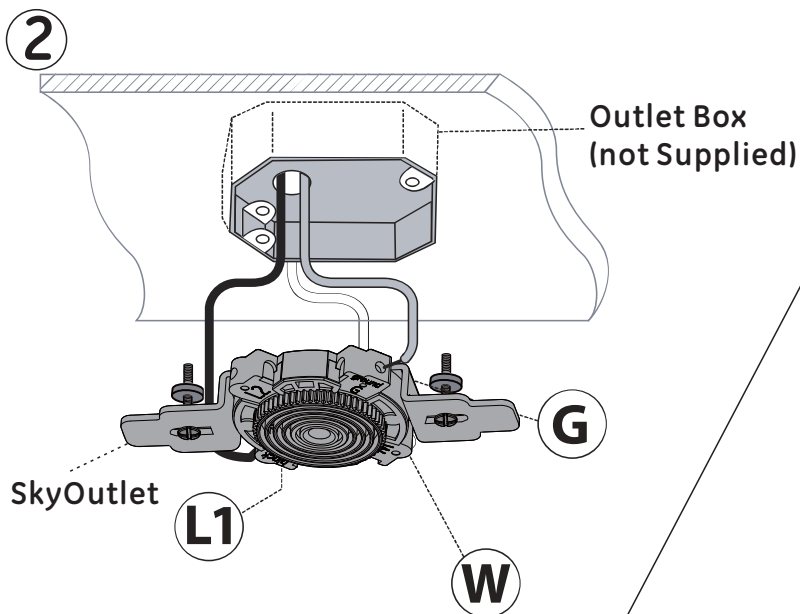
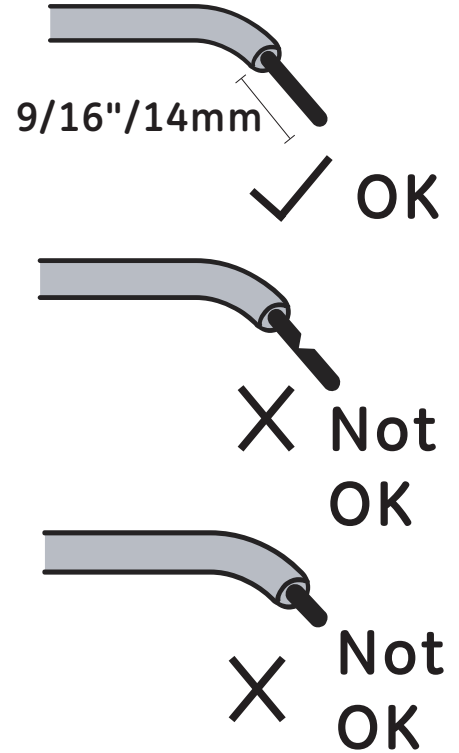
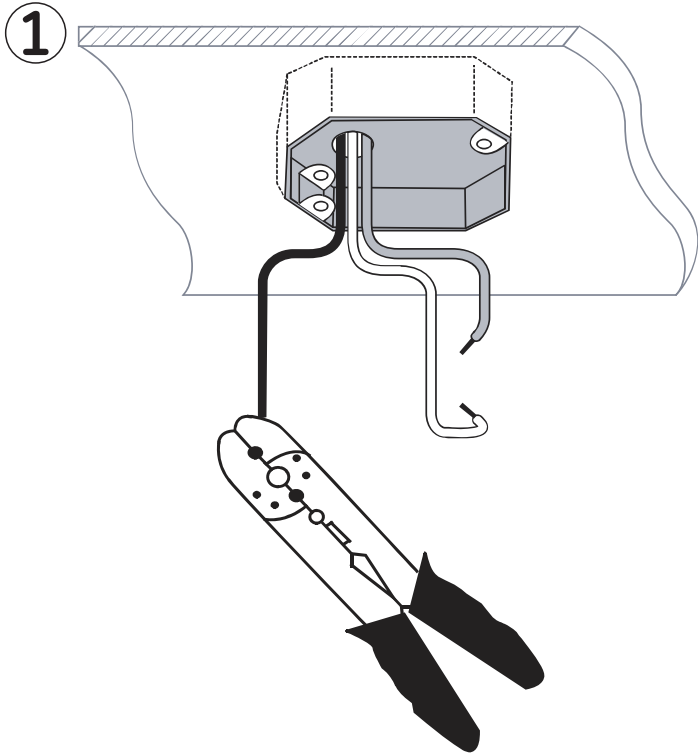
Pliers



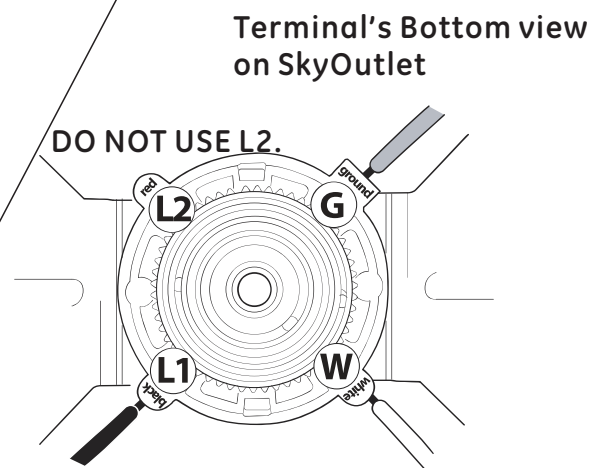
Wire Stripper

SkyOutlet Installation

! Important: Shut OFF power to the switch at circuit breaker or fuse box .
Verify power is OFF to switch box before continuing .



Insert wires into terminal, tighten screw to secure wires.
Set screw torque value - 6.3 lb-in

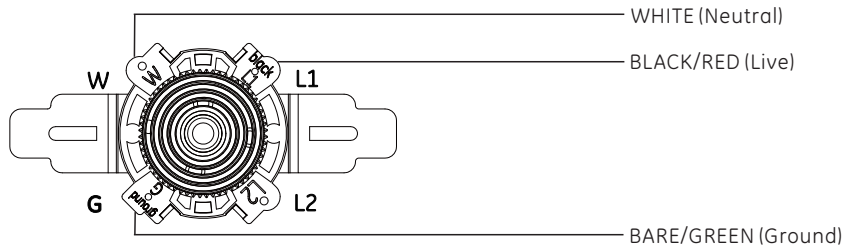


! Important:
Please see page 3 for more wiring instructions.

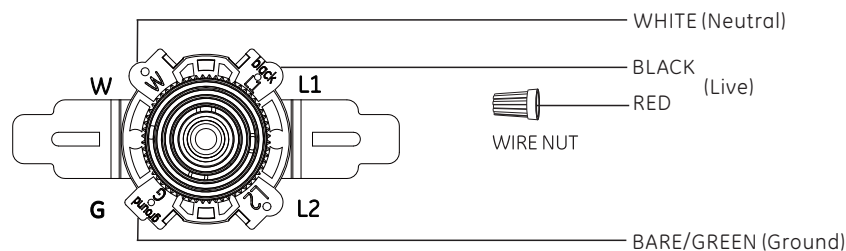
SkyOutlet Typical Wire Configurations

! IMPORTANT: If you have multiple wires inside your outlet box, you will need to determine which lead is the live or switched lead and insert this lead into L1. If you are not sure how your house is wired, contact 1-866-885-4649 for questions or contact an electrician. When multiple wires are connected together use a solid wire 12 or 14 AWG jumper lead to insert into the receptacle terminal. **DO NOT USE L2.**

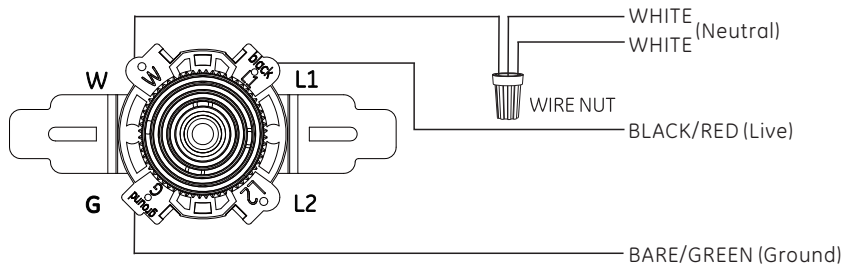
WIRING DIAGRAM #1:



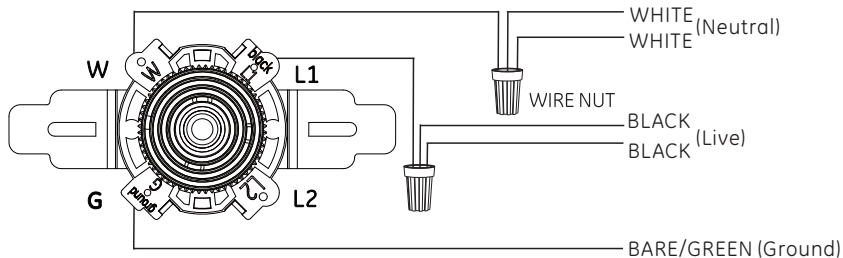
WIRING DIAGRAM #2:



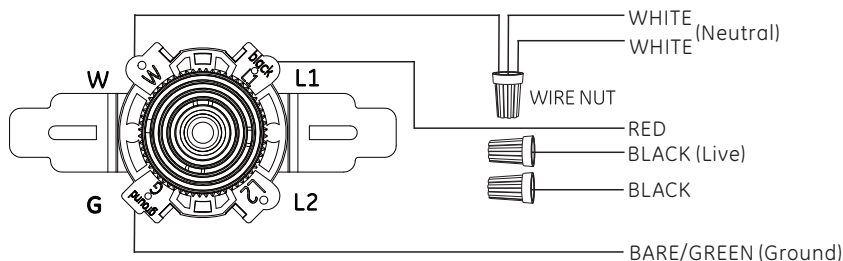
WIRING DIAGRAM #3:



WIRING DIAGRAM #4:



WIRING DIAGRAM #5:



! NOTE: If you do not have standard wiring configurations and have questions about the wiring in your outlet box, please contact a qualified electrician, or call customer service 1-866-885-4649.

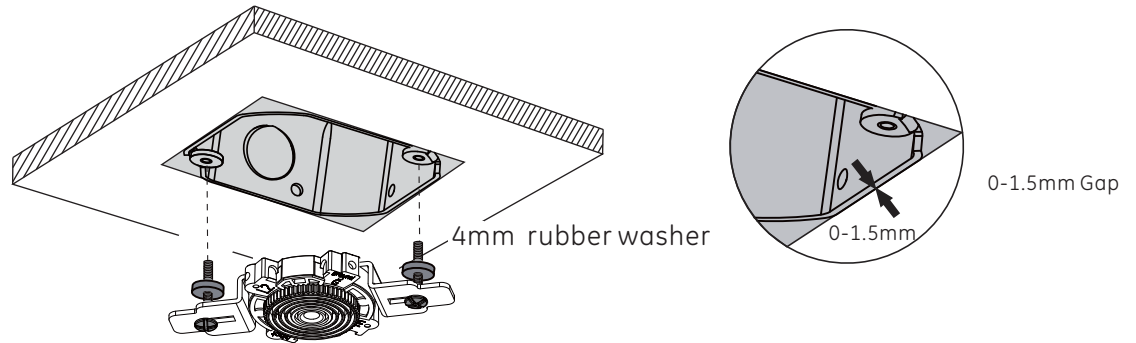
! NOTE: If you have multiple wires connected together, add a jumper lead and insert jumper lead into terminal. Only one single wire can be inserted into terminal.

SkyOutlet Installation

3

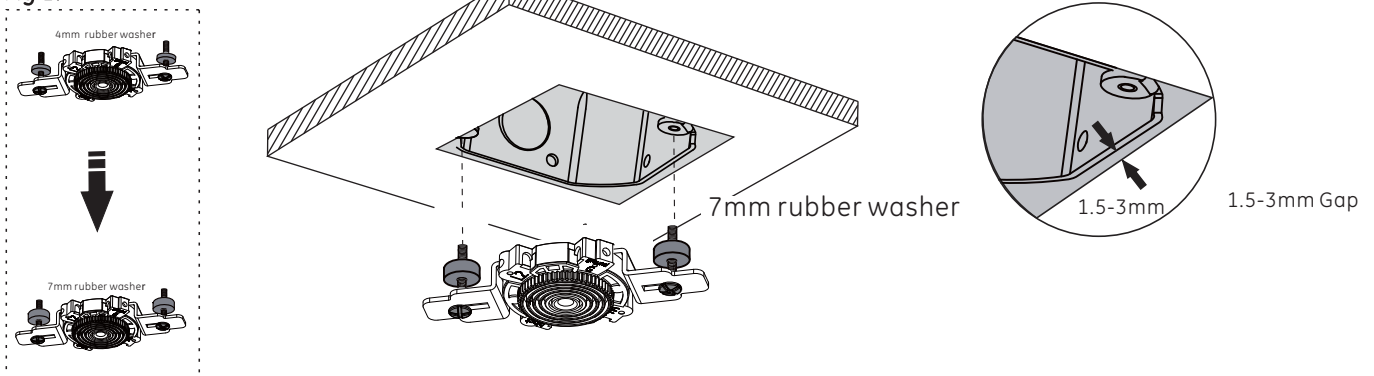
! Important: Always install SkyOutlet with rubber washers to avoid a gap or uneven surface, and to ensure proper placement of receptacle on the ceiling.

Fig 1.



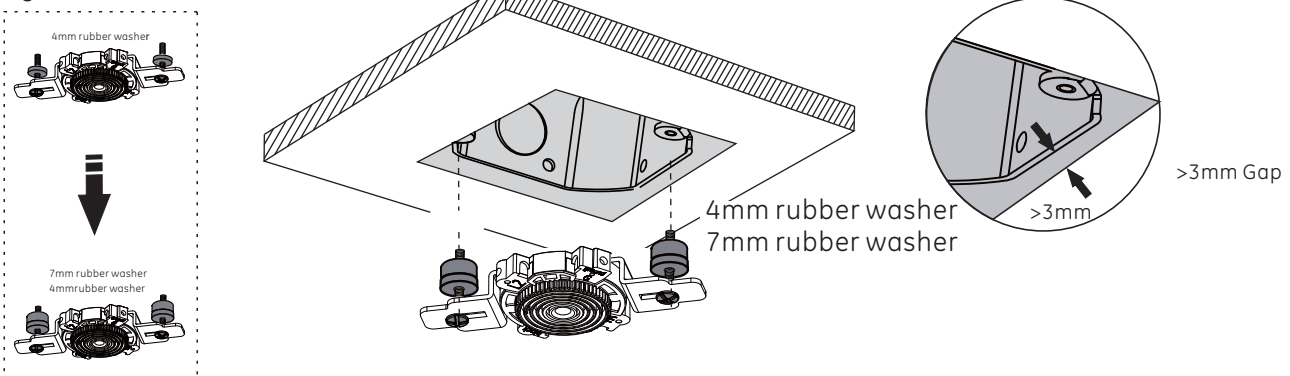
If your box is flush with the ceiling, or recessed less than 1.5mm, install with 4mm rubber washer.

Fig 2.



If your box is recessed between 1.5mm and 3mm, use 7mm rubber washer.

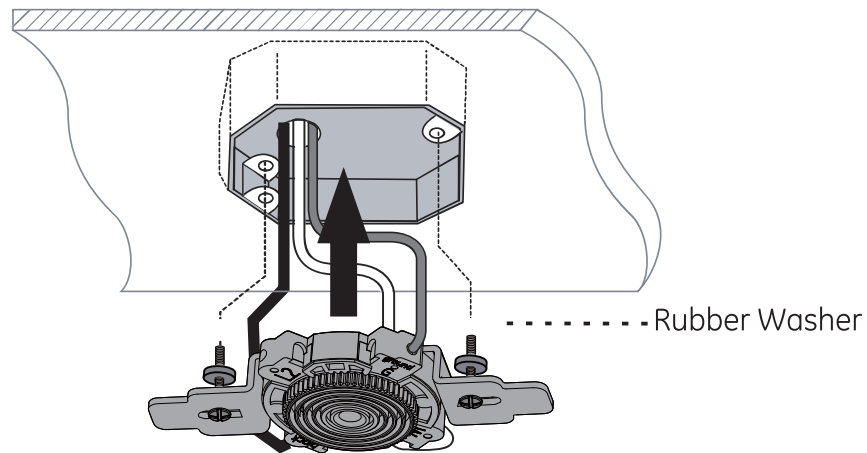
Fig 3.



If your box is recessed more than 3mm, use 7mm and 4mm rubber washer.

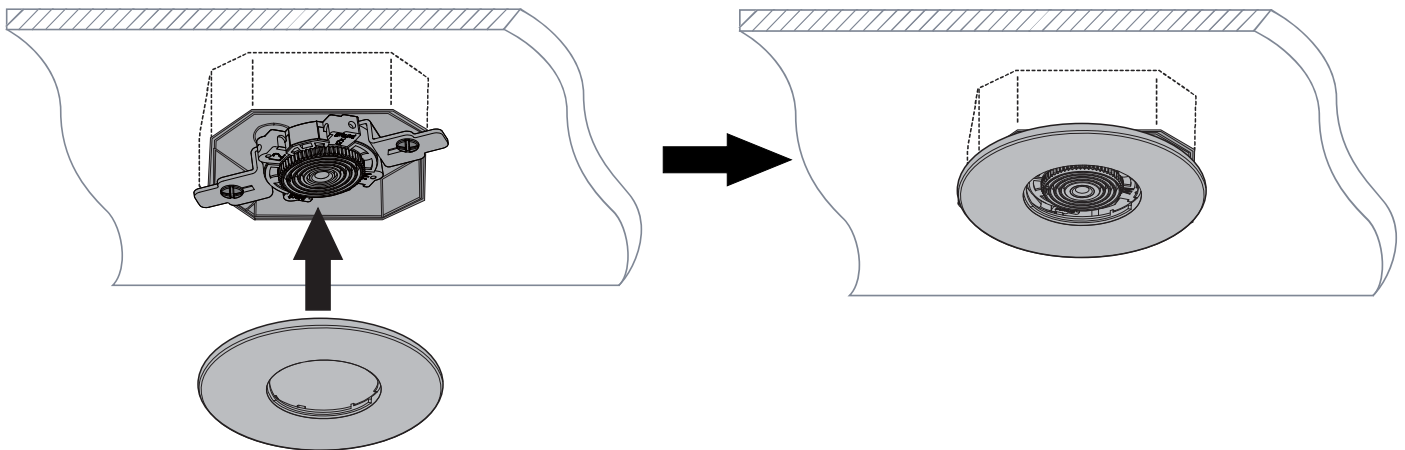
SkyOutlet Installation

4



- ! IMPORTANT:**
Always use rubber washers.
- !** Using the rubber washer when installing SkyOutlet ensures proper placement of the SkyOutlet on the ceiling. We recommend using the rubber washers in all installations.

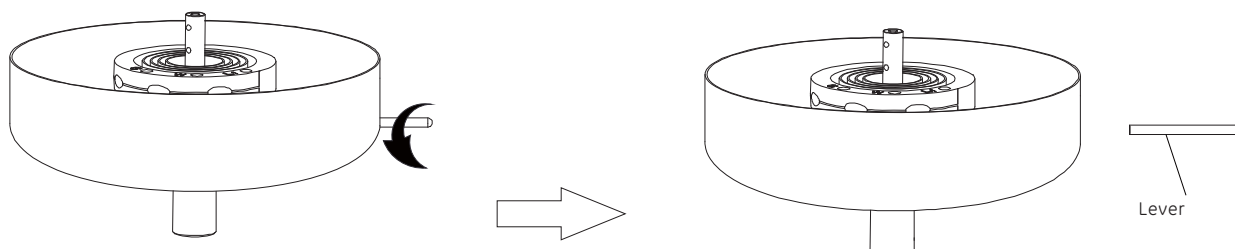
Attach cover plate. Snap to the metal bridge on the SkyOutlet.



Prepare for Installation-Remove SkyPlug

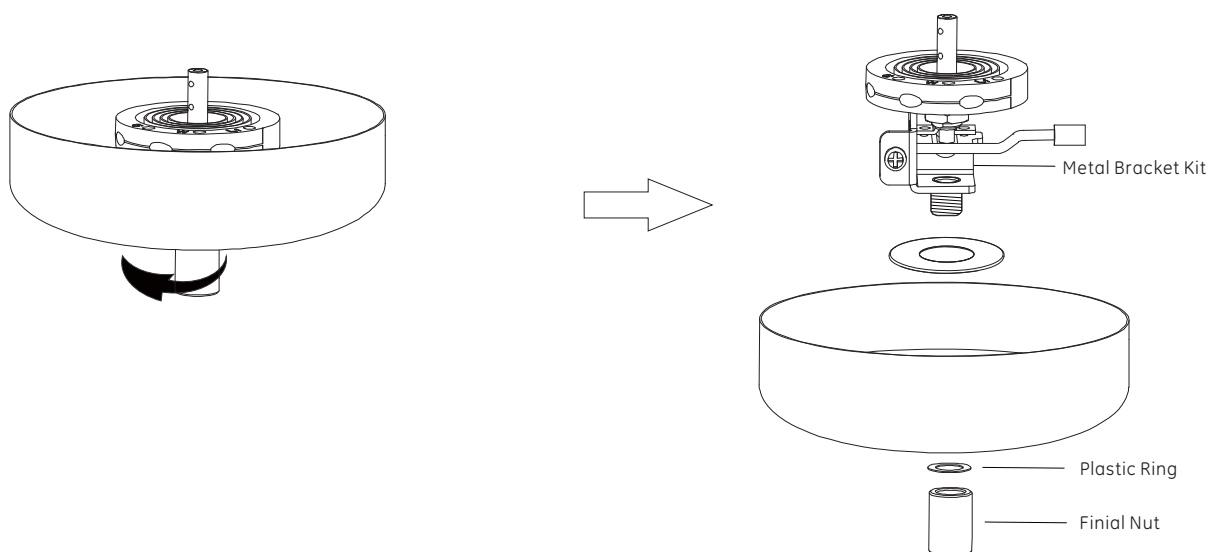
5

Turn lever counter-clockwise to remove push button.



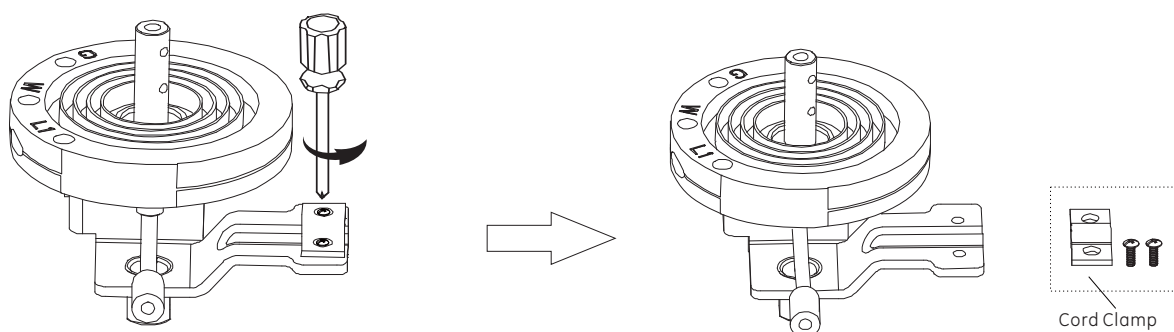
6

Turn clockwise to remove finial nut and plastic ring, and separate metal bracket kit from Lighting Base.



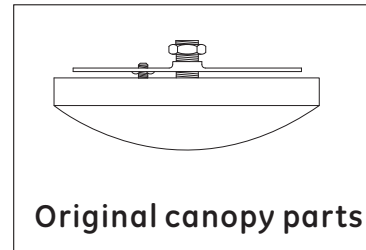
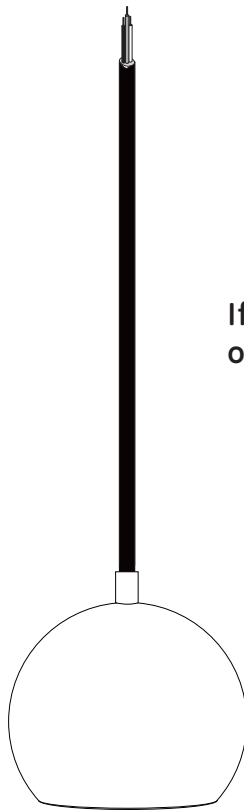
7

Turn counter-clockwise to remove cord clamp and two screws.



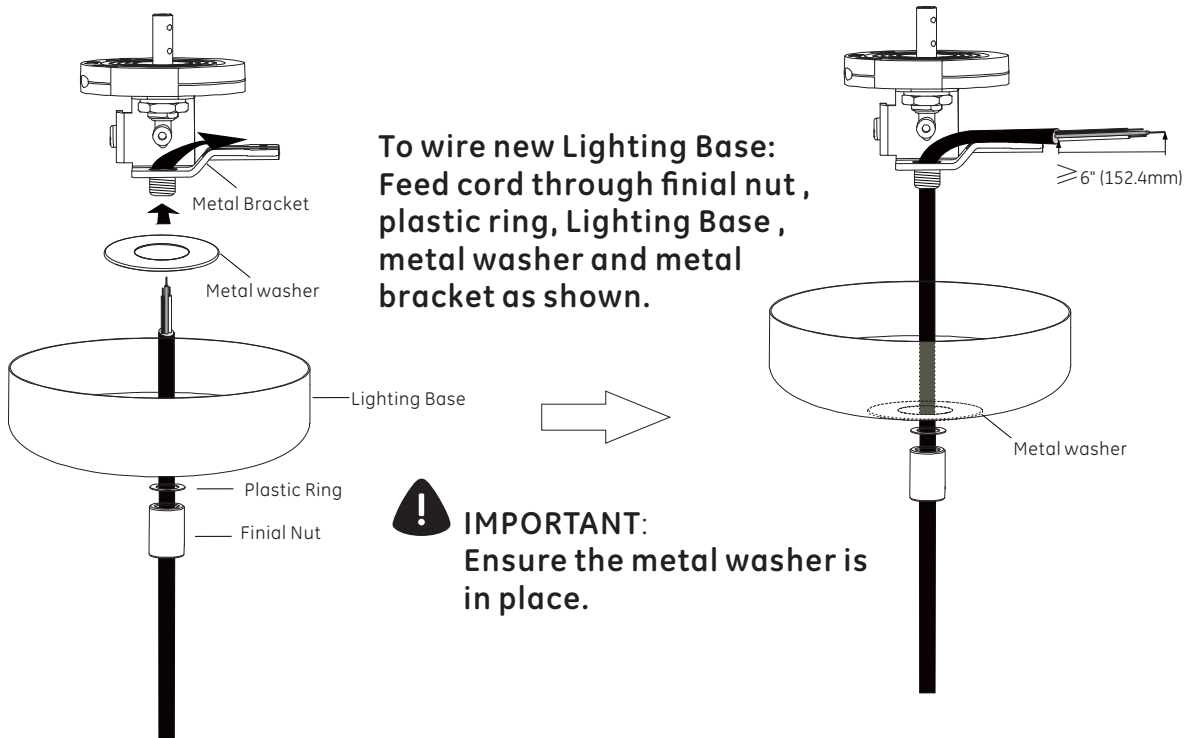
Option A: Assemble Lighting Base to Cord Fixture

8A₁



If needed, separate the cord and light from the original canopy parts (canopy and bracket).

8A₂

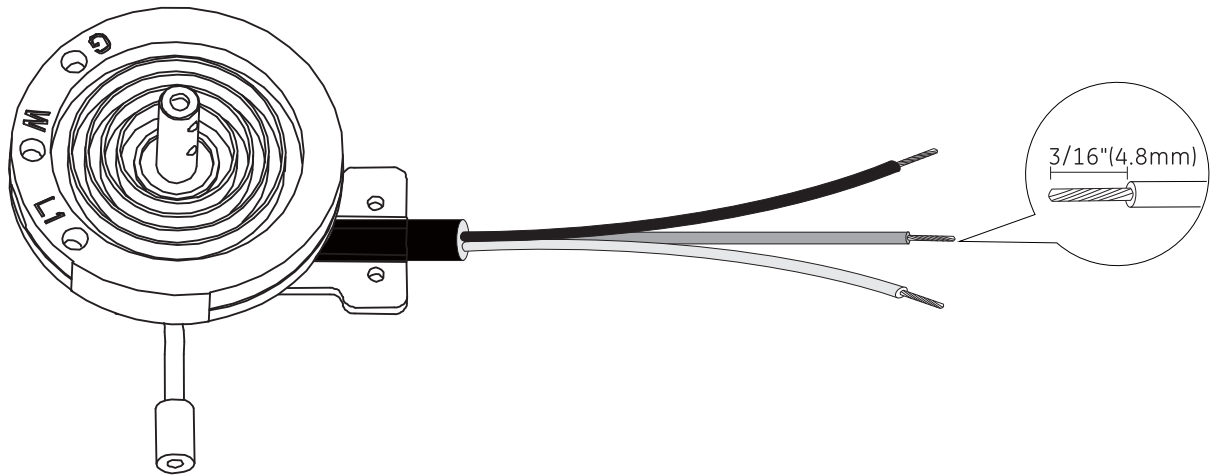


Determine the hanging height:

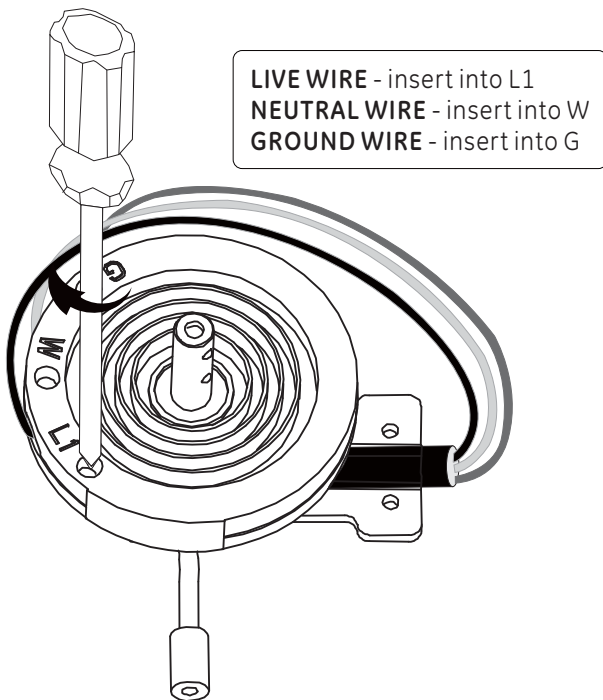
Measure the cord length to determine the hanging height of fixture. If needed, cut off the extra fixture wires, leaving at least 6 inches (152.4 mm) of wire in the Lighting Base for making the electrical connections to the SkyPlug. Make sure you leave enough wiring for making the electrical connections.

Option A (Cord Fixture): Wire SkyPlug

- 8A₃ Separate the cord into 3 sections so that the live, neutral and ground wires are separated apart. Strip the ends of the wires to 3/16" (4.8mm) strip length.



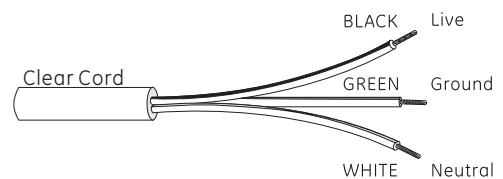
- 8A₄ Determine the polarity of wires, insert wires into the terminal of SkyPlug, and tighten screws to secure wires.



How to identify the polarity



Colored Cord: Live wire is the black wire, Neutral wire is the white wire, Ground wire is the green wire.

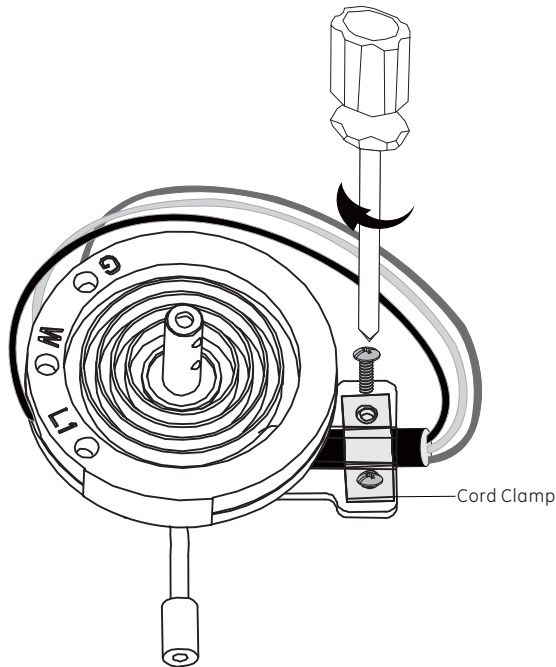


Clear Cord: Live wire is the wire with a black stripe, Neutral wire is the wire with a white stripe. Ground wire is the wire with a green stripe.

- ! **Terminal Screw Torque:** 3.6 lb-in.
Conductor Strip Length: 3/16 in.
No. 18 Awg Stranded Wire
- ! **IMPORTANT:**
Make sure there are no loose strands exposed on the SkyPlug. Multi-stranded wires should be twisted together before inserting into the terminal.
- ! **IMPORTANT:**
Make sure the wires are firmly secured into the terminals and cannot be pulled out.

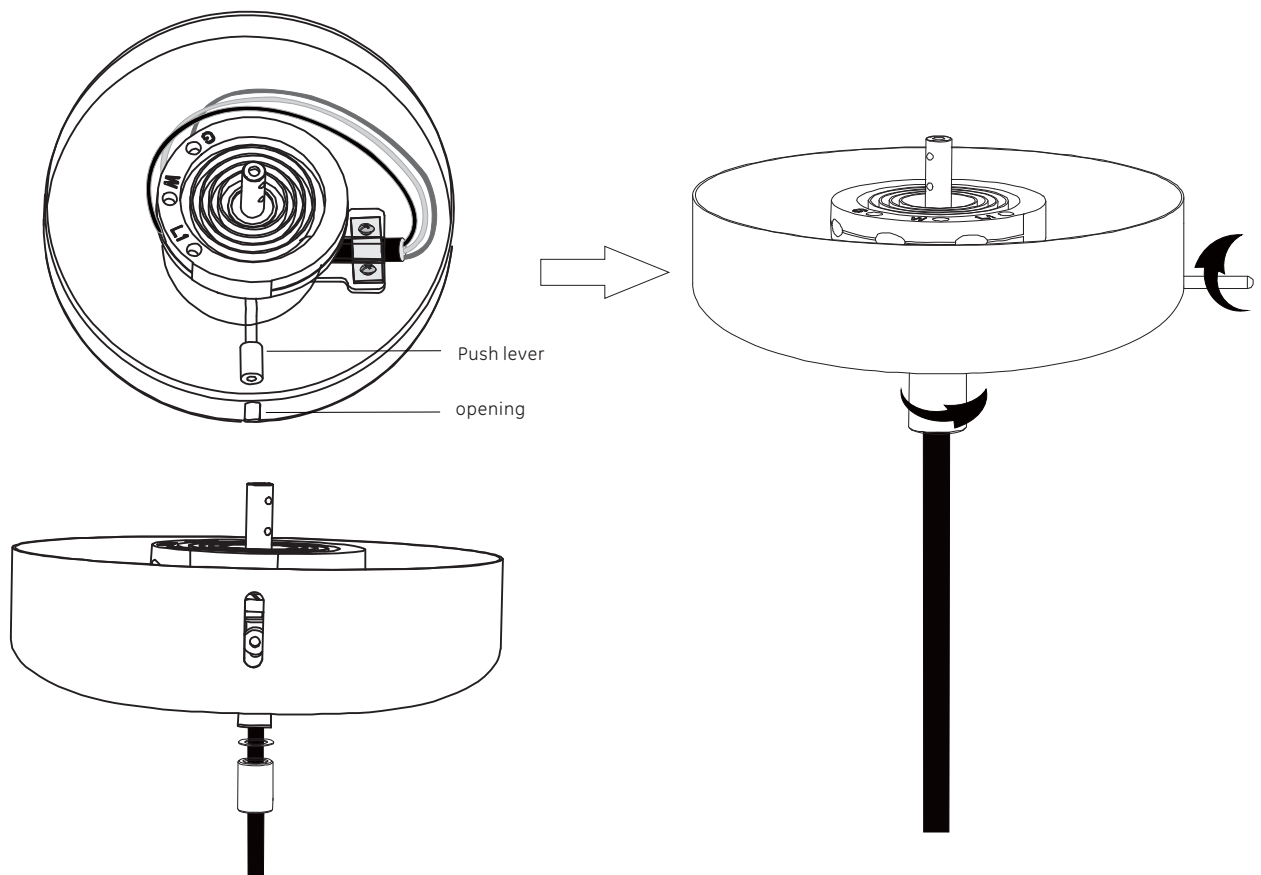
Option A: Final Assembly

- 8A5 Once the wires are connected to the SkyPlug terminal, reinstall the cord clamp to tighten the cord.



! IMPORTANT:
Make Sure The Cord Clamp Is Pressing
The Cord Portion Tightly, Pull The Cord
to Make Sure There Is No Movement.

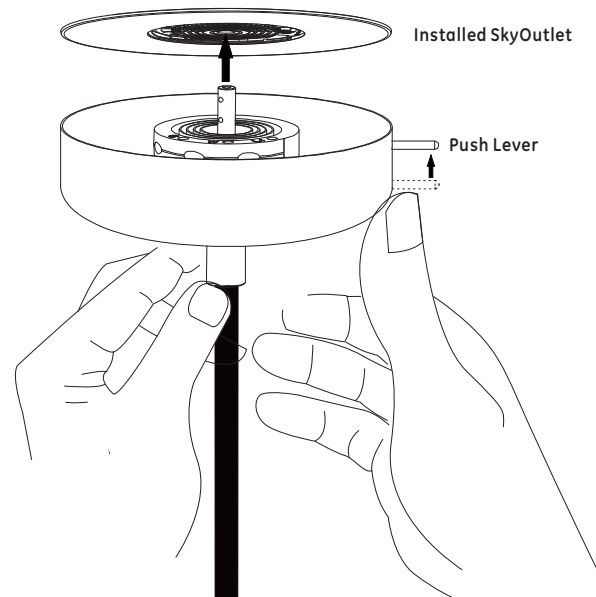
- 8A6 Reseat bracket with SkyPlug onto the Lighting Base, align the push lever with the opening of Lighting Base. Reinstall push button, plastic ring, and finial nut.



Option A: Complete Installation

8A7 To plug fixture into SkyOutlet:

- While Supporting fixture and keeping **Push Lever** in "UP" position, fully insert SkyPlug into SkyOutlet.
- Release Push Lever.
- Push up on Lighting Base until you hear a "click", signifying the SkyPlug is locked into place.
- Gently release fixture to let hang.



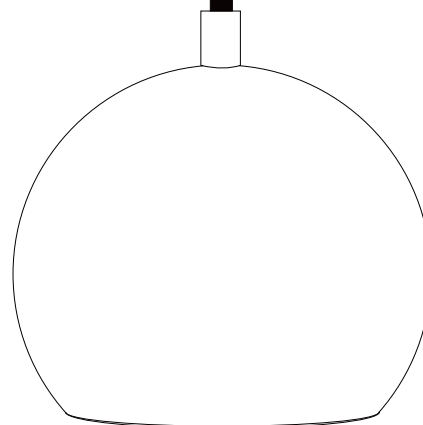
IMPORTANT:

Push lever must be in DOWN position once installed.



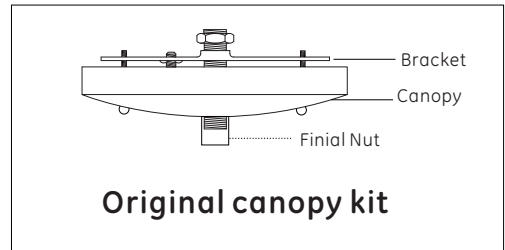
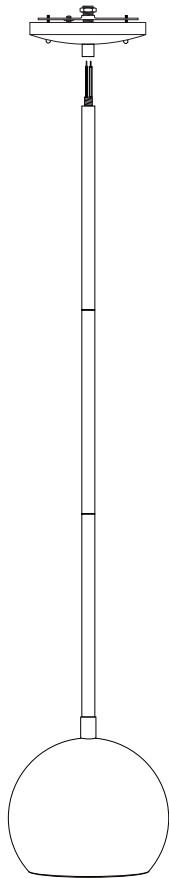
IMPORTANT:

If SkyPlug does not fully insert into SkyOutlet, you will not make the needed electrical connection. Refer to Step3 (Page 4) to install rubber washers for proper placement.



Option B: Prepare for Rod Fixture

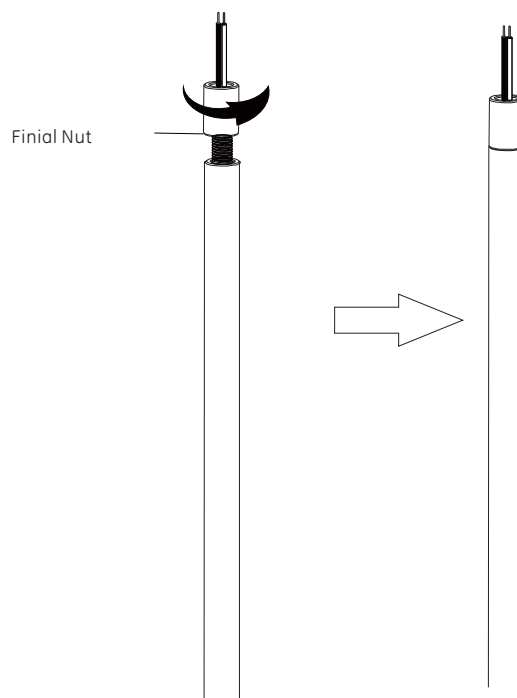
8B₁



Separate the rod and light from the original canopy parts (canopy, bracket, and finial nut if it has finial nut)

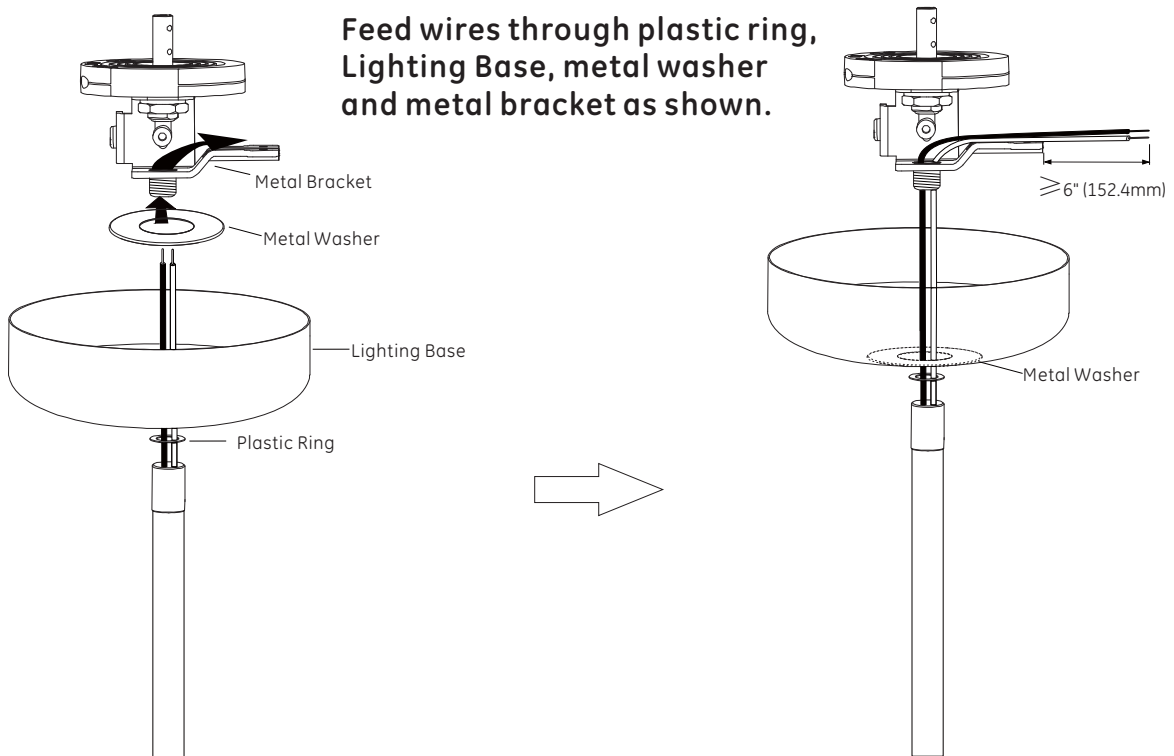
8B₂

If the fixture has a finial nut on the canopy, remove it and mount the new finial nut onto the threaded rod, routing wire up through nut. Make sure the new finial nut locks onto the threaded rod tightly.



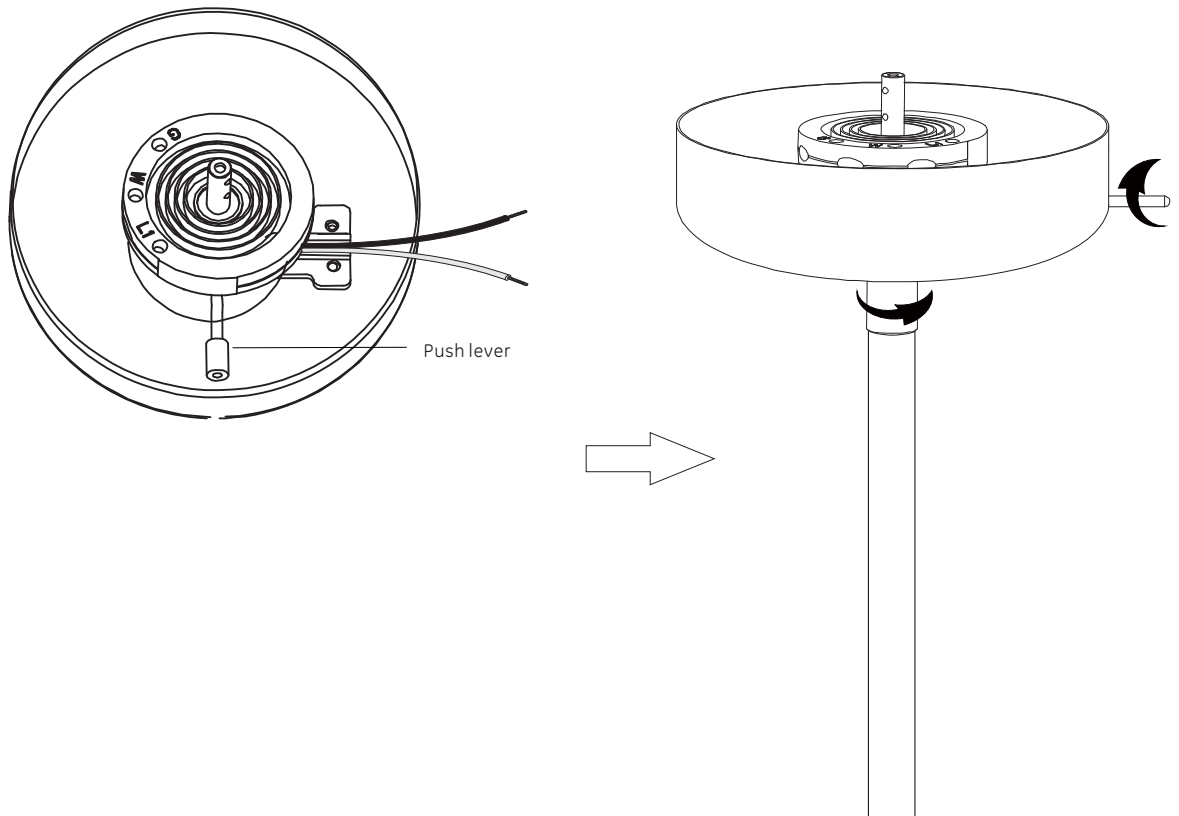
Option B: Assemble Lighting Base to Rod Fixture

8B₃



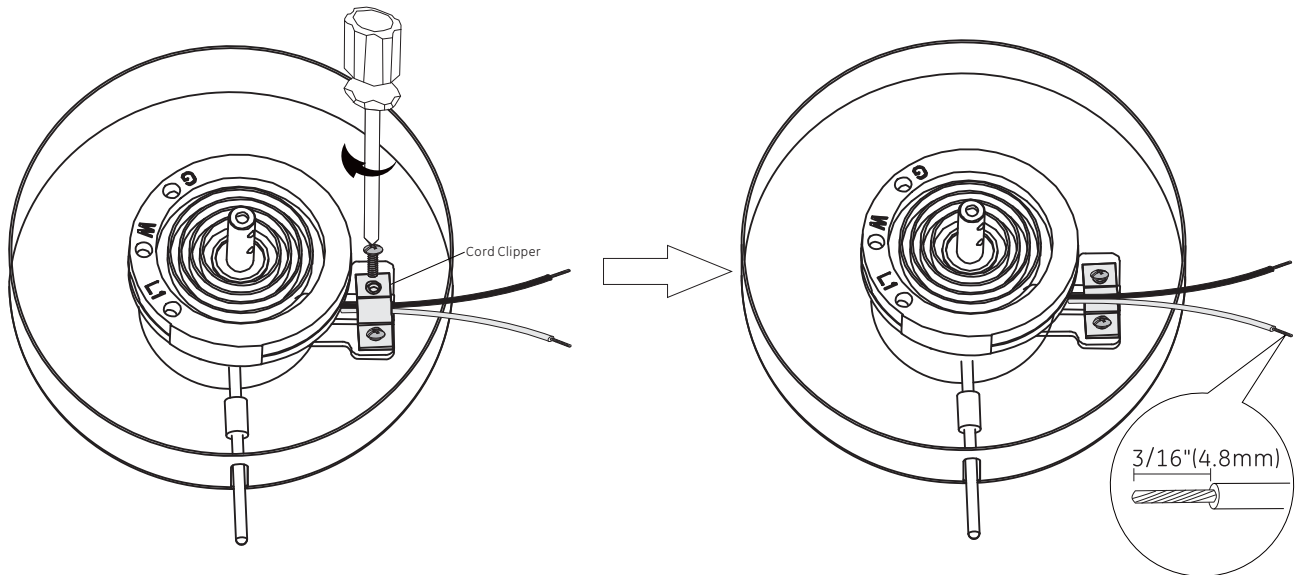
8B₄

Reseat bracket with SkyPlug onto the Lighting Base, align the push lever with the opening of Lighting Base. Reinstall rod set and push lever to tighten.

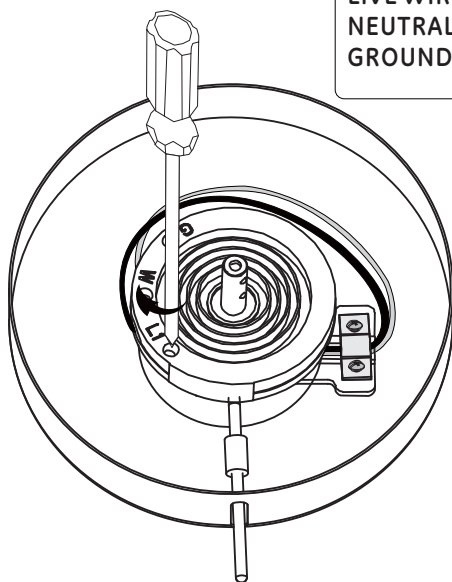


Option B (Rod Fixture): Wire SkyPlug

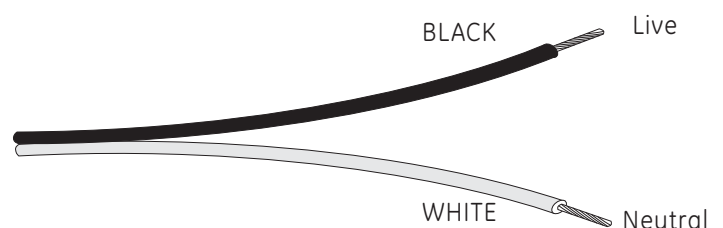
- 8B5** Attach the cord clamp. Separate the cord into 2 sections so that the live and neutral wires are separated apart. Strip the ends of the wires to 3/16" (4.8mm) strip length. Make sure you leave enough wires for electrical connection.



- 8B6** Determine the polarity of wires, insert wires into the terminal of SkyPlug, tighten screws to secure wires.



LIVE WIRE - insert into L1
NEUTRAL WIRE - insert into W
GROUND WIRE - insert into G



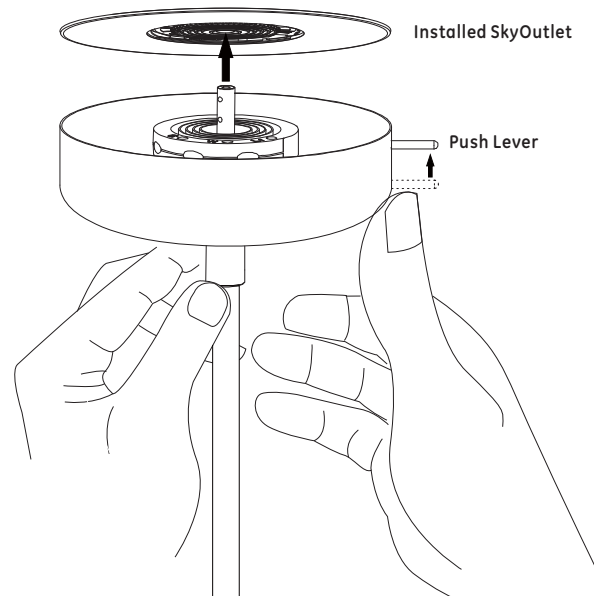
Rod pendant is provided with two single wires. Live wire is the black wire. Neutral wire is the white wire.

- !** Terminal Screw Torque: 3.6 lb-in.
Conductor Strip Length: 3/16 in.
No. 18 Awg Stranded Wire
- !** **IMPORTANT:**
Make sure there are no loose strands exposed on the SkyPlug. Multi-stranded wires should be twisted together before inserting into the terminal.
- !** **IMPORTANT:**
Make sure the wires are firmly secured into the terminals and cannot be pulled out.

Option B: Complete Installation

8A7 To plug fixture into SkyOutlet:

- While Supporting fixture and keeping **Push Lever** in "UP" position, fully insert SkyPlug into SkyOutlet.
- Release Push Lever.
- Push up on Lighting Base until you hear a "click",signifying the SkyPlug is locked into place.
- Gently release fixture to let hang.



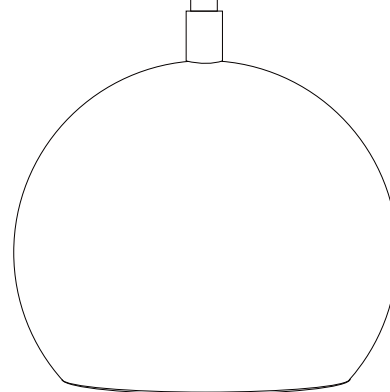
IMPORTANT:

Push lever must be in DOWN position once installed.



IMPORTANT:

If SkyPlug does not fully insert into SkyOutlet, you will not make the needed electrical connection. Refer to Step3 (Page 4) to install rubber washers for proper placement.



Maintenance



CAUTION: Switch off power supply before carrying out any of these checks.

TROUBLE SHOOTING:

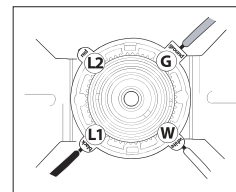
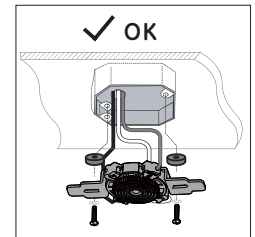
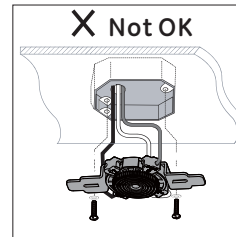
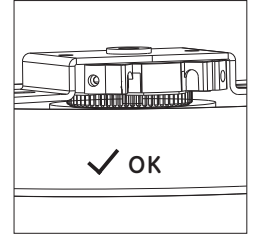
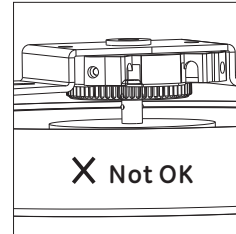
1.SkyPlug will not insert into SkyOutlet:

-add rubber washers between J-box and SkyOutlet.
See Page 5 step 4.

2.Pendant will not light up:

- Check main and branch circuit fuses or breakers.
- Check to make sure the wall switch is in the on position.
- The SkyPlug should be fully inserted into the SkyOutlet. There are 2 levels of ball bearings on the plug stem. The lower set of ball bearing needs to be fully inserted into the SkyOutlet.
- Ensure the 4mm (or combination of washers) was used when installing the SkyOutlet on the ceiling. (You may have an uneven outlet box). The SkyPlug must fully insert into the SkyOutlet to make the electrical connection.

-Ensure you inserted the wires correctly into the SkyOutlet.
Live wire into L1,Neutral wire into W, Ground into G.



PAINT CANOPY :

- You can paint the Lighting Base any color to match your existing light fixture.
- Before painting, remove (detach) the SkyPlug from the Lighting Base.
- Cover up the threaded portion of the push lever.
- After painting, reassemble parts as shown in instructions.

