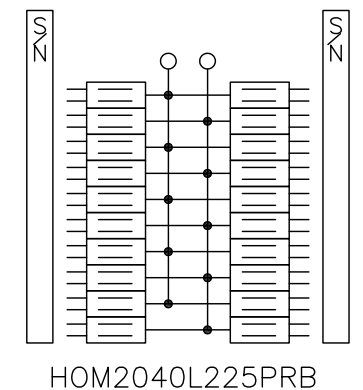
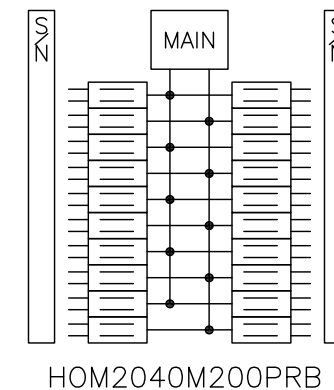
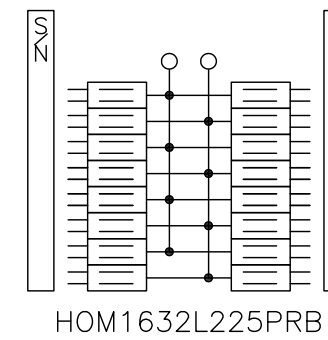
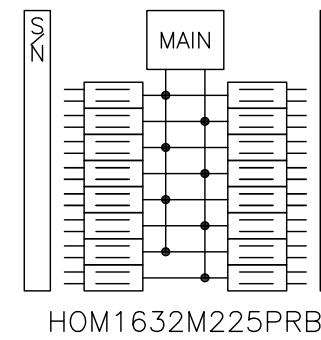
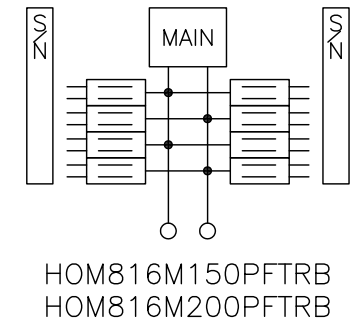
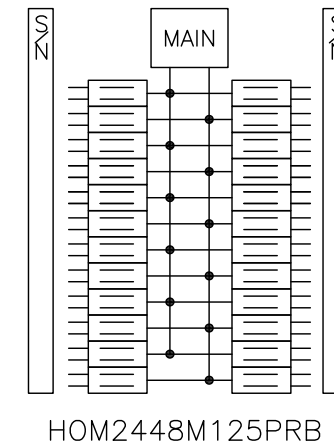
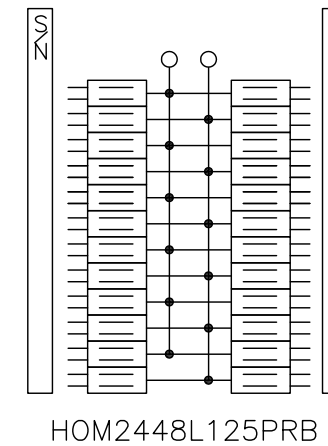
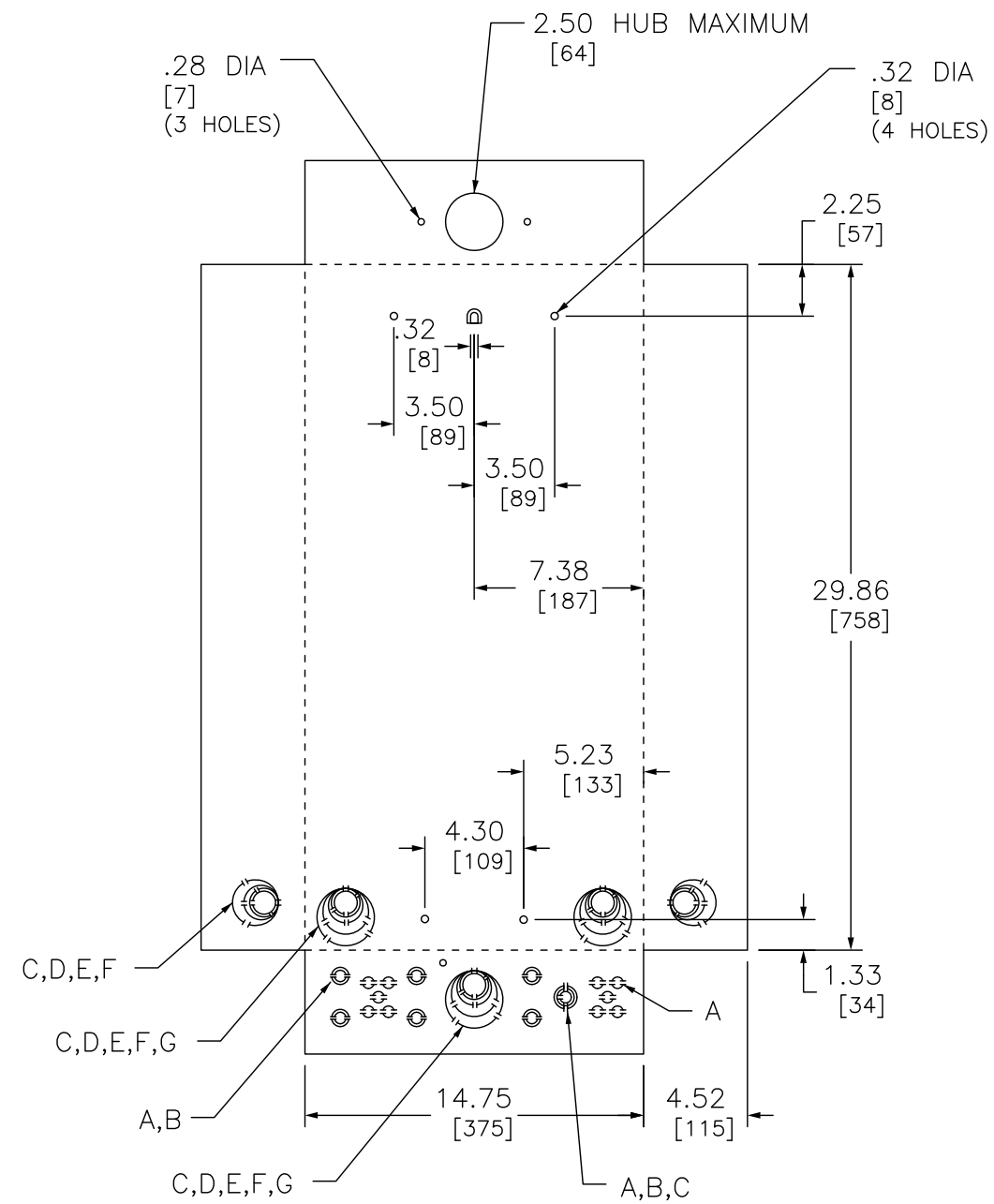


KNOCKOUTS							
SYMBOL	A	B	C	D	E	F	G
IN	.50	.75	1.00	1.25	1.50	2.00	2.50
MM	13	19	25	32	38	51	64



DUAL DIMENSIONS: INCHES  
MILLIMETERS

CATALOG NUMBER	MAXIMUM SYSTEM VOLTAGE	MAINS AMPERE RATING	SPACES	MAXIMUM CIRCUITS	MAIN WIRE SIZE AWG AL	MAIN WIRE SIZE AWG CU
HOM2448L125PRB	120/240VAC 1PH 3W	125	24	48	#6-2/0	#6-1
HOM2448M125PRB		125	24	48	#6-2/0	#6-1
HOM816M150PFTRB		150	8	16	#4-250	#4-250
HOM816M200PFTRB		200	8	16	#4-250	#4-250
HOM1632L225PRB		225	16	32	#4-300	#4-250
HOM1632M225PRB		225	16	32	#4-300	#4-250
HOM2040M200PRB		200	20	40	#4-250	#4-250
HOM2040L225PRB		225	20	40	#4-300	#4-250

NOTES:  
FINISH - GRAY BAKED ENAMEL ELECTRODEPOSITED OVER CLEANED PHOSPHATIZED STEEL.  
UL LISTED - FILE E-6294  
NEUTRALS - INSULATED GROUNDABLE.  
WHEN MOUNTING THESE LOAD CENTERS, ALLOW 1.25/[32] INCHES OF CLEARANCE OF HINGED SIDE FOR THE DOOR TO OPEN.

HOMELINE LOAD CENTERS  
RAINPROOF NEMA TYPE 3R ENCLOSURE  
SIDE HINGED  
OUTDOOR

**SQUARE D**  
by Schneider Electric

DWG# PWFDS-SYRS-0077  
NO.