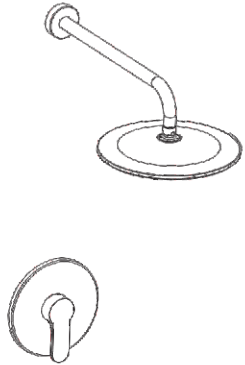
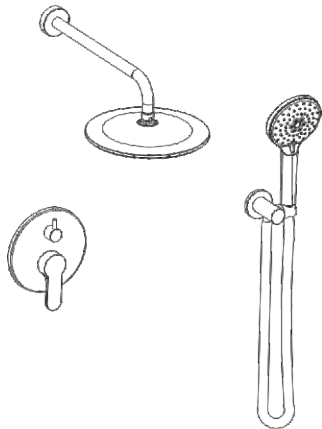


Installation Manual



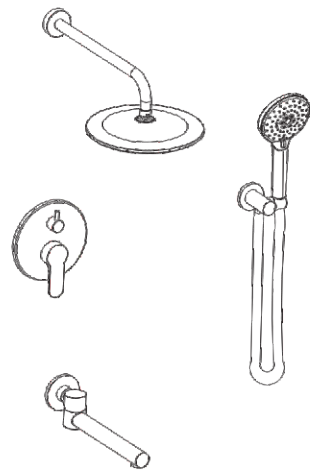
Single Function Type



Dual Function type



Dual Function type



Three Function Type

INDEX

- 1. CUPC Certification 01-03
- 2. Installation Preparation & Maintenance 04
- 3. Single function shower system 05-10
- 4. Dual function shower system 11-16
- 5. Three function shower system 17-19
- 6. Troubleshooting..... 20

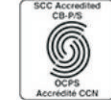


THANK YOU FOR CHOOSING OUR SHOWER SYSTEM



IAPMO RESEARCH AND TESTING, INC.

5001 East Philadelphia Street, Ontario, California 91761-2816 – USA • 909-472-4100 • 909-472-4244 • www.iapmort.org



CERTIFICATE OF LISTING

IAPMO Research and Testing, Inc. is a product certification body which tests and inspects samples taken from the supplier's stock or from the market or a combination of both to verify compliance to the requirements of applicable codes and standards. This activity is coupled with periodic surveillance of the supplier's factory and warehouses as well as the assessment of the supplier's Quality Assurance System. This listing is subject to the conditions set forth in the characteristics below and is not to be construed as any recommendation, assurance or guarantee by IAPMO Research and Testing, Inc. of the product acceptance by Authorities Having Jurisdiction.

The most updated information on this Certificate of Listing is available online at pld.iapmo.org

Effective Date: April 2018 Void After: April 2019

Product: Plumbing Fixture Fittings**Materials/Components***** File No. MC-11093

Issued To: Kaiping Glamour Tap Component Co., Ltd.
Building D, No. 1,
2nd Xihu Road,
Cuishanhu New District,
Kaiping, GD 529300
China

Identification: Plumbing fixture fitting components are intended exclusively for OEM applications

Single-handle, single-control, and automatic compensating mixing bath and shower valves shall have identifiable temperature control settings in which the settings are indicated by words ("cold", "warm", "hot", etc.), by numbers, or graphically.

Shower heads and hand-held showers shall be marked with the manufacturer's specified maximum flow rate, in L/min and gpm

Packages shall be marked with the manufacturer's name, trademark, or other mark as well as the model number or, in the case of private labeling, the name, trademark, or mark of the customer for whom the fitting was manufactured as well as the model number.

Tim Collins
Chairman, Product Certification Committee

Ron Chaney
CEO, The IAPMO Group

This listing period is based upon the last date of the month indicated on the Effective Date and Void After Date shown above. Any change in material, manufacturing process, marking or design without having first obtained the approval of the Product Certification Committee, or any evidence of non-compliance with applicable codes and standards or of inferior workmanship, may be deemed sufficient cause for revocation of this listing. Production of or reference to this form for advertising purposes may be made only by specific written permission of IAPMO Research and Testing, Inc. Any alteration of this certificate could be grounds for revocation of the listing. This document shall be reproduced in its entirety.





**IAPMO RESEARCH AND TESTING, INC.
CERTIFICATE OF LISTING**

Void After: April 2019

Product: Plumbing Fixture Fittings***Materials/Components***** File No. MC-11093

Issued To: Kaiping Glamour Tap Component Co., Ltd.

Automatic compensating valves shall be accompanied by instructions for their installation, adjustment, and servicing, which shall specify how the handle position or limit setting is to be adjusted.

Listed products may bear the cUPC® certification mark with "COMPONENT" above.

Characteristics: Plumbing fixture fitting components to be installed in accordance with the manufacturer's instructions and the requirements of the latest edition of the Uniform Plumbing Code.

Products listed on this certificate have been tested by an IAPMO R&T recognized laboratory. This recognition has been granted based upon the laboratory's compliance to the applicable requirements of ISO/IEC 17025.

Products listed on this certificate have been tested by an IAPMO R&T recognized laboratory. This recognition has been granted based upon the laboratory's compliance to the applicable requirements of ISO/IEC 17025.

Products are in compliance with the following code(s):

- Uniform Plumbing Code (UPC®)
- National Plumbing Code of Canada

Products are in compliance with the following standard(s):

- ASME A112.18.1-2011/CSA B125.1-11



**IAPMO RESEARCH AND TESTING, INC.
CERTIFICATE OF LISTING**

Void After: April 2019

Product: Plumbing Fixture Fittings***Materials/Components***** File No. MC-11093

Issued To: Kaiping Glamour Tap Component Co., Ltd.

MODELS:

Lavatory and Kitchen Cartridges

- G25H-**-**
- G35A-**-**
- G35F-**-**
- G35H-**-**
- G40F-**-**
- G40H-**-**

Pressure Balance Cartridges

- GP40H-**-**
- GP40B-**-**

SUFFIXES NOTES:

- 1ST * - Represents the various colors
- CW - Creamy White
- BL - Blue
- RE - Red
- YE - Yellow
- WH - White
- GR - Gray
- DG - Dark Grey
- BK - Black
- 2ND * - represent the different length of the rod 0-99mm.

Installation Precautions

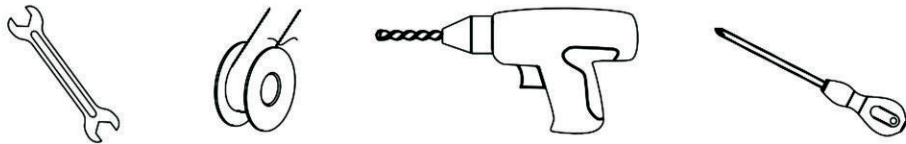
I. When you open the product packing, please check the product and accessories at first. If there is any discrepancy, please contact the company or our distributor immediately.

1. The hot and cold water supply pipe of the faucet must be properly connected.
2. When facing the front of the faucet, the hot water supply is on the left and cold water supply is on the right. Incorrect connection will cause permanent to the cartridge.
3. If the accessories to be changed without affecting the use, we will not make a prior notice.
4. The impurities in the water supply pipe must be cleared before installation to avoid blockage.
5. The water pressure of the faucet is 0.05MPa-1.0MPa(including cold water and hot water pressure)

Applicable water temperature range: 4℃ - 90℃ .

II.Preparation before installation

1. Please read the installation manual carefully before installation.
2. Installation work must be performed by a professional plumber.
3. Installation tool.



III.Product reparation

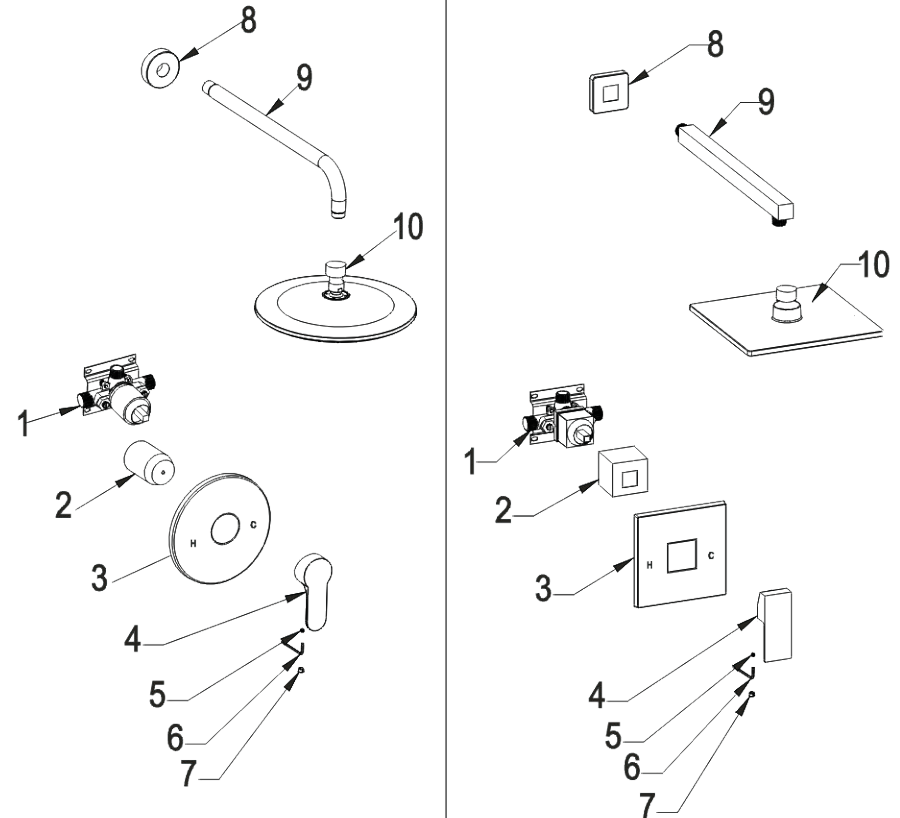
If the cartridge is worn out which cause leakage, please turn off the water source. Remove the handle, panel, and decorative cover in sequence, remove the gland with a wrench, then take out the cartridge and copper sleeve.

IV.Clearance and Maintenance

In order to keep the faucet appearance smooth and good performance, please follow the below steps to clean and maintain the faucet.

1. Clean with water and dry with a soft cotton cloth.
2. Use a mild liquid and a colorless glass cleaner to remove surface dirt and scale, also you can use the cleaner without grinding function.
3. Do not use detergents, polishing tools, abrasive cloth, paper towels or scrapers to clean the faucet.
4. Do not use acid cleaners, insoluble granular detergents, soaps, etc to clean the faucet.

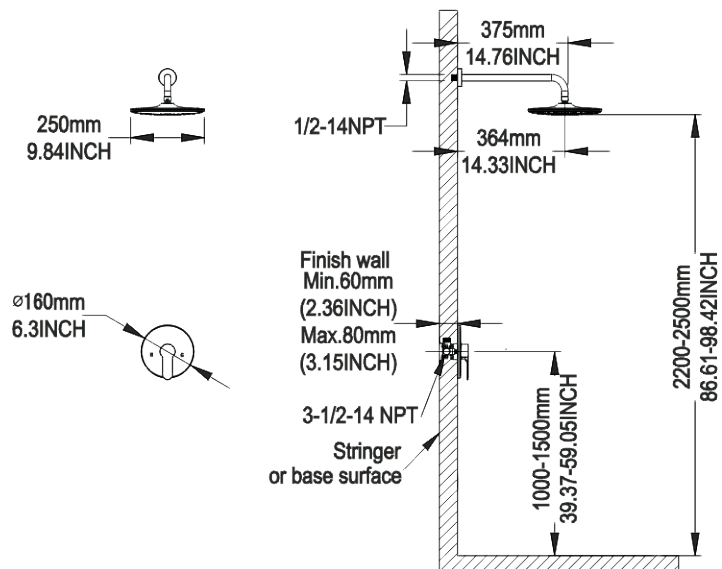
Single function concealed faucet parts list



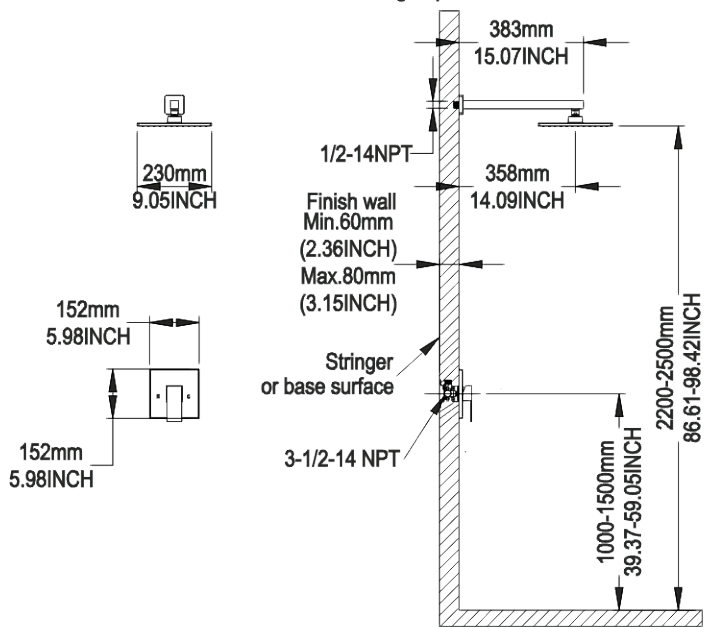
| No | Description | QTY |
|----|------------------|-----|
| 1 | Rough-in valve | 1 |
| 2 | Protective cover | 1 |
| 3 | Cover board | 1 |
| 4 | On/off handle | 1 |
| 5 | Hexagonal screw | 1 |
| 6 | Allen key | 1 |
| 7 | Decorative hat | 1 |
| 8 | Cover board | 1 |
| 9 | Shower arm | 1 |
| 10 | Shower head | 1 |

| No | Description | QTY |
|----|------------------|-----|
| 1 | Rough-in valve | 1 |
| 2 | Protective cover | 1 |
| 3 | Cover board | 1 |
| 4 | On/off handle | 1 |
| 5 | Hexagonal screw | 1 |
| 6 | Allen key | 1 |
| 7 | Decorative hat | 1 |
| 8 | Cover board | 1 |
| 9 | Shower arm | 1 |
| 10 | Shower head | 1 |

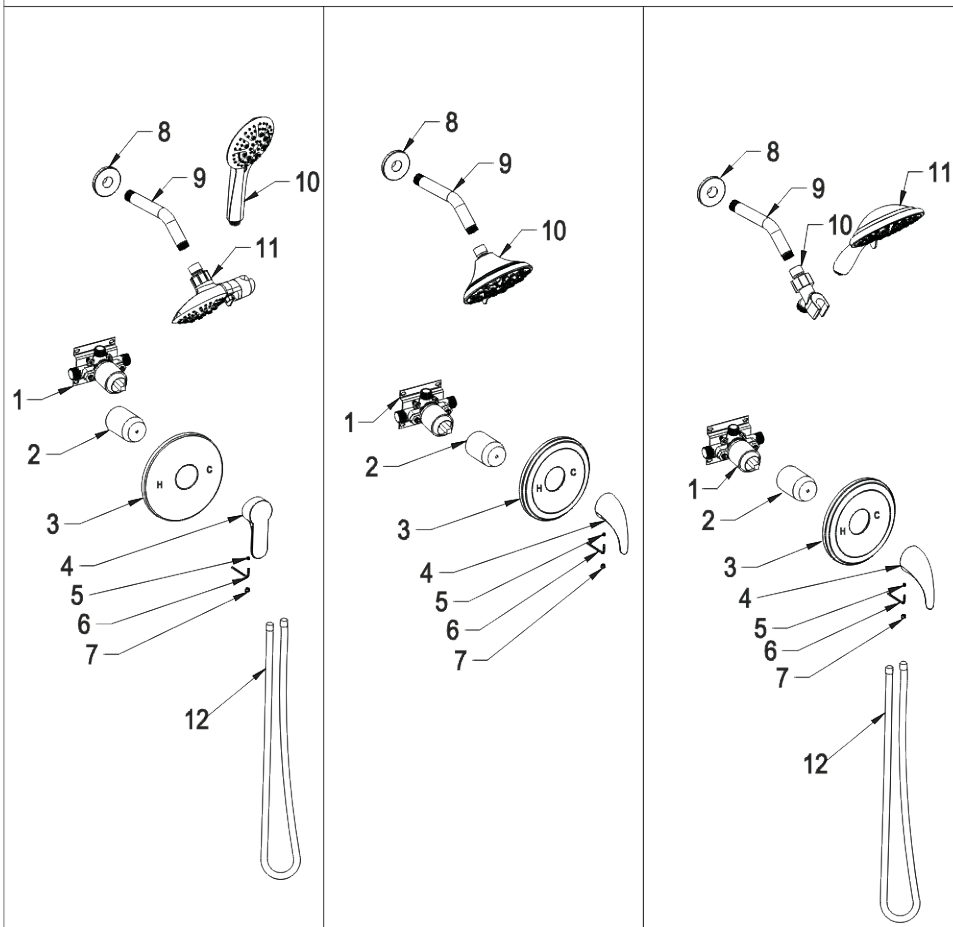
Technical drawing of product



Technical drawing of product

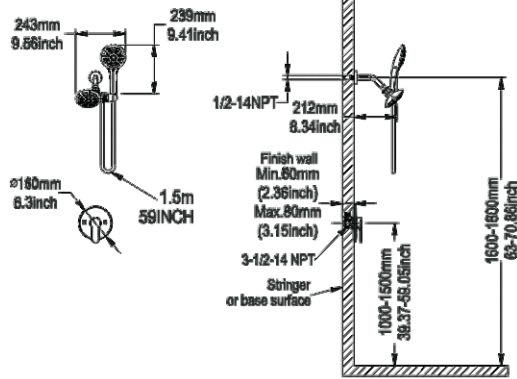


Single function concealed faucet parts list

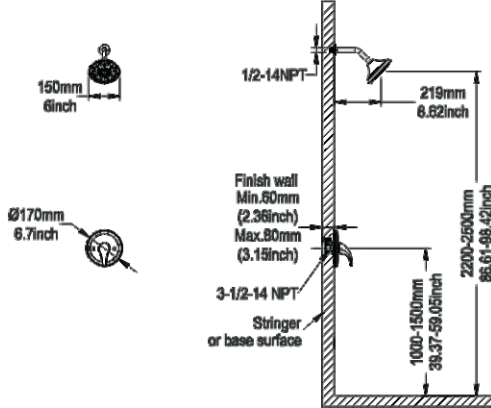


| No | Description | QTY | No | Description | QTY | No | Description | QTY |
|----|------------------|-----|----|------------------|-----|----|------------------|-----|
| 1 | Rough-in valve | 1 | 1 | Rough-in valve | 1 | 1 | Rough-in valve | 1 |
| 2 | Protective cover | 1 | 2 | Protective cover | 1 | 2 | Protective cover | 1 |
| 3 | Cover board | 1 | 3 | Cover board | 1 | 3 | Cover board | 1 |
| 4 | Diverter handle | 1 | 4 | Diverter handle | 1 | 4 | Diverter handle | 1 |
| 5 | Hexagonal screw | 1 | 5 | Hexagonal screw | 1 | 5 | Hexagonal screw | 1 |
| 6 | Allen key | 1 | 6 | Allen key | 1 | 6 | Allen key | 1 |
| 7 | Decorative hat | 1 | 7 | Decorative hat | 1 | 7 | Decorative hat | 1 |
| 8 | Cover board | 1 | 8 | Cover board | 1 | 8 | Cover board | 1 |
| 9 | Shower arm | 1 | 9 | Shower arm | 1 | 9 | Shower arm | 1 |
| 10 | Shower head | 1 | 10 | Shower head | 1 | 10 | Shower head | 1 |
| 11 | Shower head | 1 | | | | 11 | Bracket | 1 |
| 12 | Shower hose | 1 | | | | 12 | Shower hose | 1 |

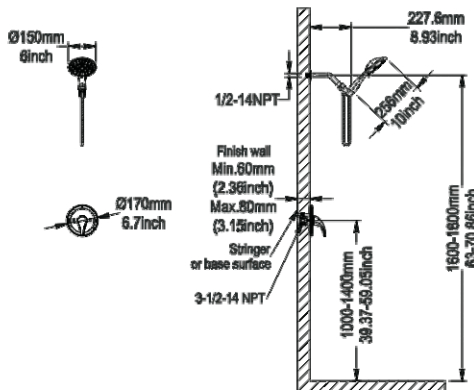
Technical drawing of product



Technical drawing of product

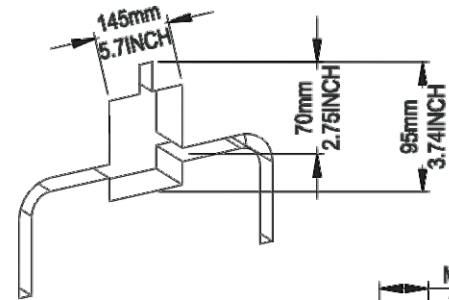


Technical drawing of product

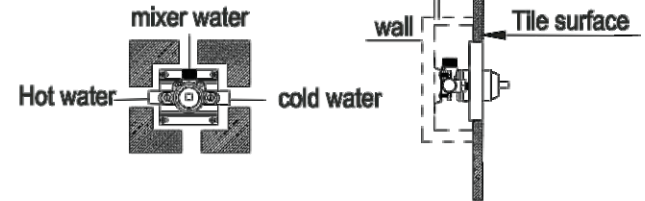


Technical drawing of drilling size

1. The size of the embedded box that needs to be drilled is 5.7" * 3.74"



2. The depth of the embedded box is 1.96" - 2.75"
It's better to drill the depth of 1.96" for blank wall



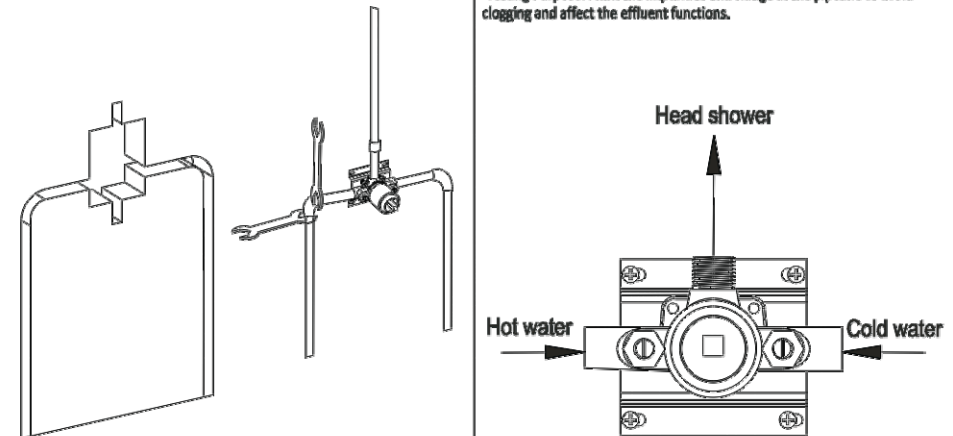
Pipe connection

1. Please drill the holes on the wall for the main body embedded part, hot and cold water inlet pipes as well as shower arm connection pipes according to the basic product dimension drawing as below.
2. Please make hot and cold water inlet pipe, the mixed water outlet pipe connect with control valve, and tightened with the wrench.

Water testing and sealing testing

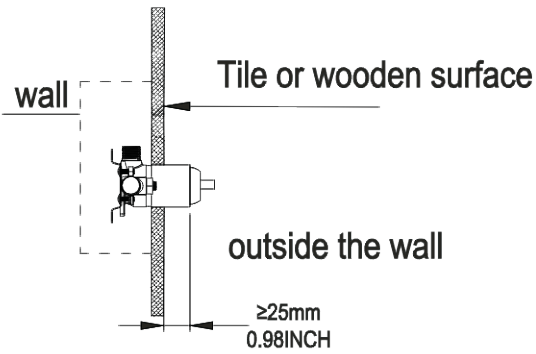
1. After the pipe connection is completed, open the protective panel and cover, and then open the cartridge, flush the pipeline; Then close the cartridge to check the pressure resistance and sealing performance of the pipeline, make sure there are no leakage.
2. Block each outlet pipe with a stopper then open the cartridge to check if the pipe joint is well-sealed and the pipe condition under pressure to ensure no leakage.

Testing Purpose: Flush the impurities and sludge in the pipeline to avoid clogging and affect the effluent functions.

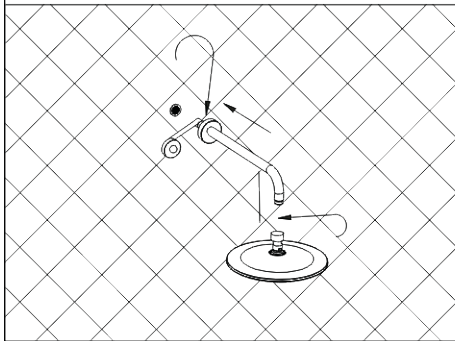


The procedure of sealing the wall

Use a parallel ruler to measure the flatness of the embedded box casing and the vertical wall surface. If the wall surface is not flat, it should be patched to ensure the embedded box casing and vertical wall angle meets at nearly ideal angle of 90, then lay the tile decoration.

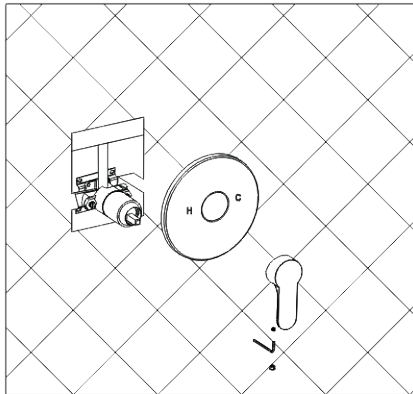


Handle shower installation

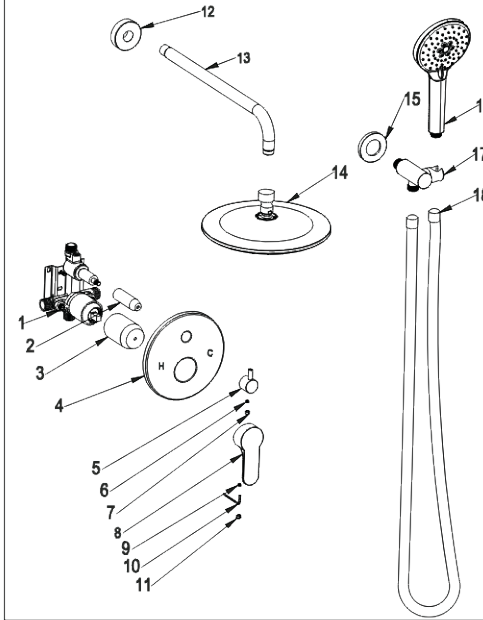


Installation of Rough-in valve

1. Take off the protective panel and cover
2. The decorative panel and the handle are connected to the control valve as shown below sequence

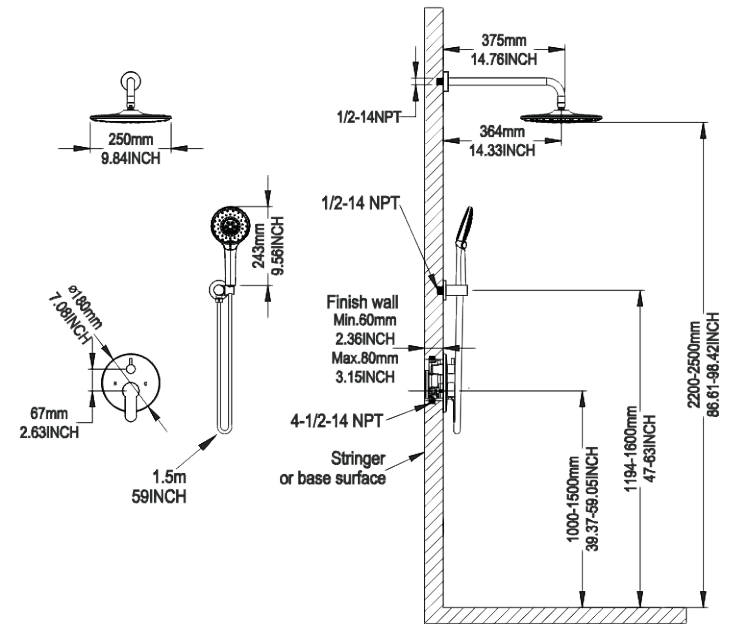


Dual function concealed faucet parts list



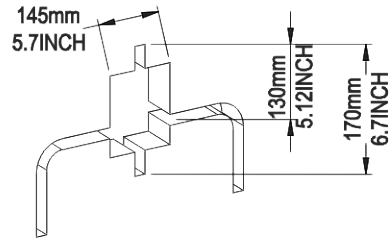
| No | Description | QTY |
|----|------------------|-----|
| 1 | Rough-in valve | 1 |
| 2 | protective cover | 1 |
| 3 | protective cover | 1 |
| 4 | cover board | 1 |
| 5 | diverter handle | 1 |
| 6 | Hexagonal screw | 1 |
| 7 | Decorative hat | 1 |
| 8 | on/off handle | 1 |
| 9 | Hexagonal screw | 1 |
| 10 | Allen key | 1 |
| 11 | Decorative hat | 1 |
| 12 | cover board | 1 |
| 13 | shower arm | 1 |
| 14 | shower head | 1 |
| 15 | Wall covering | 1 |
| 16 | handle shower | 1 |
| 17 | Bracket | 1 |
| 18 | shower hose | 1 |

Technical drawing of dual function

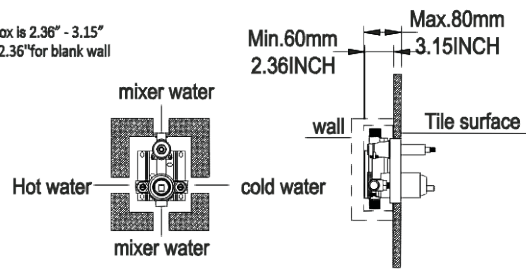


Technical drawing of drilling size

1.The size of the embedded box that needs to be drilled is 5.3" * 6.7"

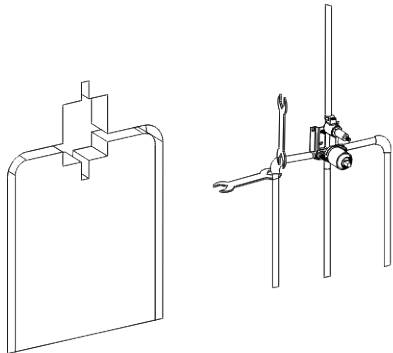


2.The depth of the embedded box is 2.36" - 3.15"
It's better to drill the depth of 2.36" for blank wall



Pipe connection

1.Please drill the holes on the wall for the main body embedded part, hot and cold water inlet pipes as well as shower arm connection pipes according to the basic product dimension drawing as below.
2.Please make hot and cold water inlet pipe, the mixed water outlet pipe connect with control valve, and tightened with the wrench.

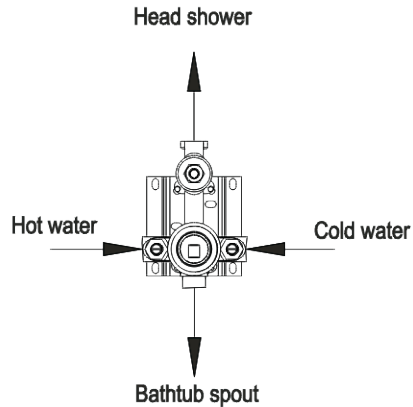


Water testing and sealing testing

1.After the pipe connection is completed, open the protective panel and cover, and open the cartridge, flush the pipeline; Then close the cartridge to check the pressure resistance and sealing performance of the pipeline, make sure there are no leakage.

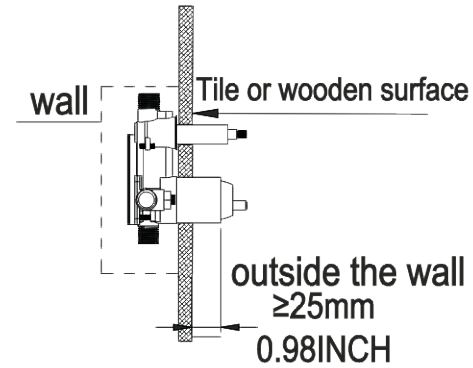
2.Block each outlet pipe with a stopper then open the cartridge to check if the pipe joint is well-sealed and the pipe condition under pressure to ensure no leakage.

Testing Purpose: Flush the impurities and sludge in the pipeline to avoid clogging and affect the effluent functions.

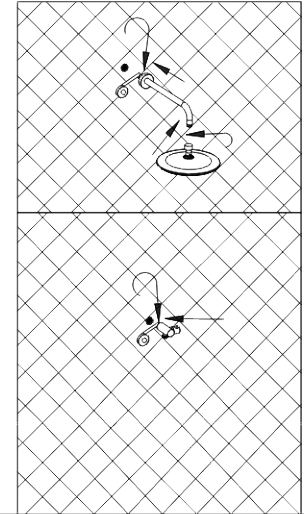


The procedure of sealing the wall

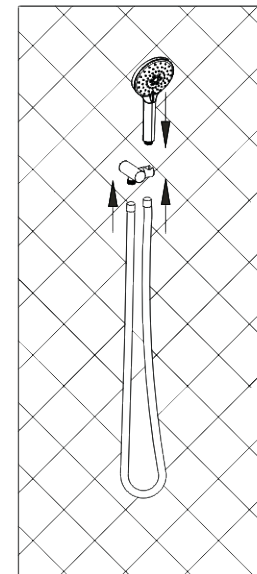
Use a parallel ruler to measure the flatness of the embedded box casing and the vertical wall surface. If the wall surface is not flat, it should be patched to ensure the embedded box casing and vertical wall angle meets at nearly ideal angle of 90, then lay the tile decoration.



Shower sets installation

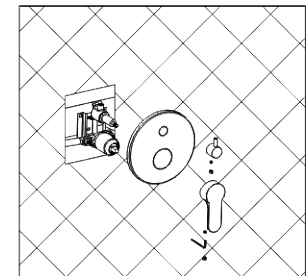


Handle shower installation



Installation of Rough-in valve

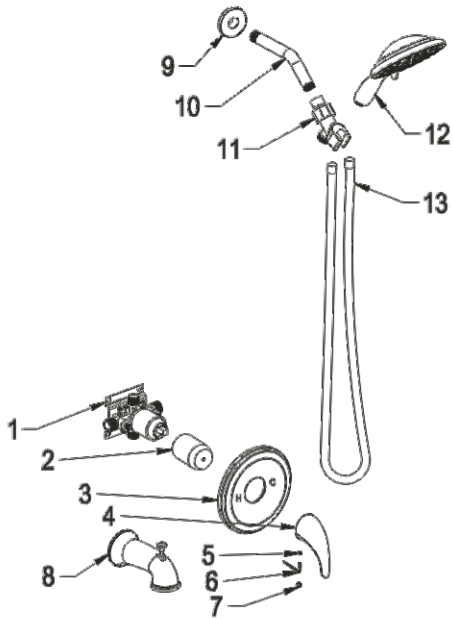
1.Take off the protective panel and cover
2. The decorative panel and the handle are connected to the control valve as shown below sequence



According to the figure below, please correctly

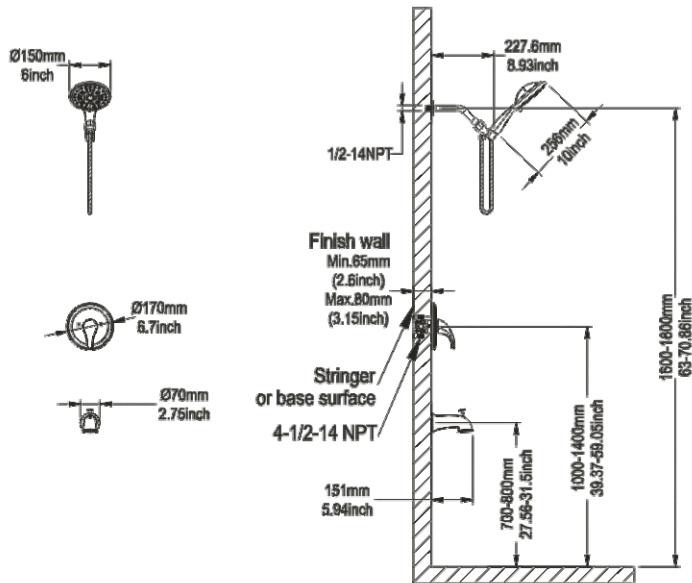


Dual function concealed faucet parts list



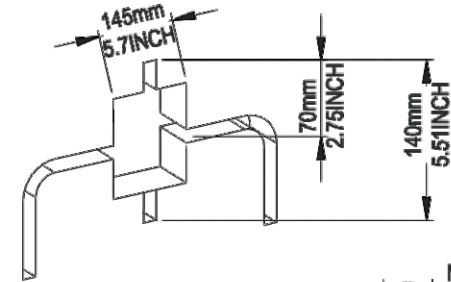
| No | Description | QTY |
|----|------------------|-----|
| 1 | Rough-in valve | 1 |
| 2 | Protective cover | 1 |
| 3 | Cover board | 1 |
| 4 | Diverter handle | 1 |
| 5 | Hexagonal screw | 1 |
| 6 | Allen key | 1 |
| 7 | Decorative hat | 1 |
| 8 | Bathtub spout | 1 |
| 9 | Cover board | 1 |
| 10 | Shower arm | 1 |
| 11 | Bracket | 1 |
| 12 | Shower head | 1 |
| 13 | Shower hose | 1 |

Technical drawing of product

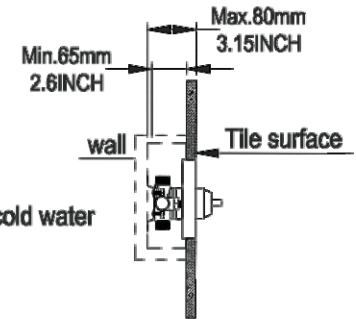
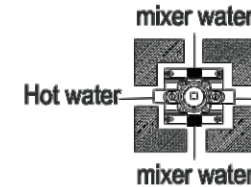


Technical drawing of drilling size

1.The size of the embedded box that needs to be drilled is 5.7"×5.51"

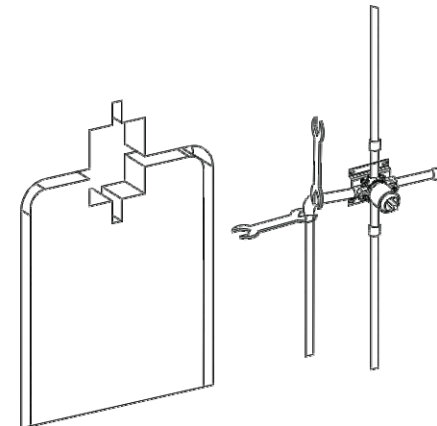


2.The depth of the embedded box is 2.6"-3.15"
It's better to drill the depth of 1.96"for blank wall



Pipe connection

1.Please drill the holes on the wall for the main body embedded part, hot and cold water inlet pipes as well as shower arm connection pipes according to the basic product dimension drawing as below.
2.Please make hot and cold water inlet pipe, the mixed water outlet pipe connect with control valve, and tighted with the wrench.

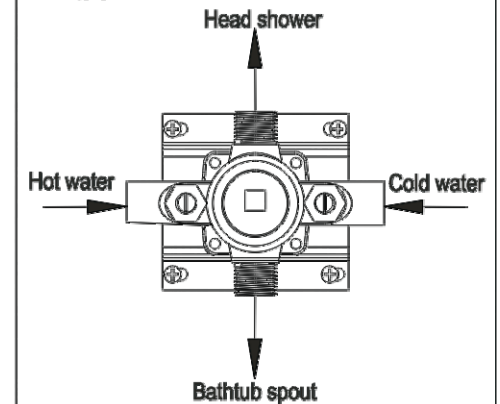


Water testing and sealing testing

1.After the pipe connection is completed, open the protective panel and cover, and then open the cartridge, flush the pipeline; Then close the cartridge to check the pressure resistance and sealing performance of the pipeline, make sure there are no leakage.

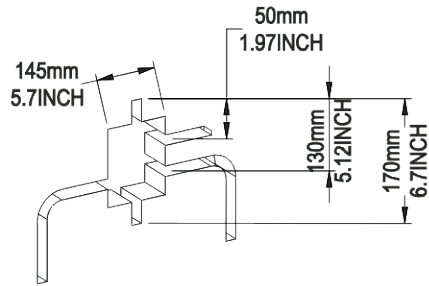
2.Block each outlet pipe with a stopper then open the cartridge to check if the pipe joint is well-sealed and the pipe condition under pressure to ensure no leakage.

Testing Purpose: Flush the impurities and sludge in the pipeline to avoid clogging and affect the effluent functions.

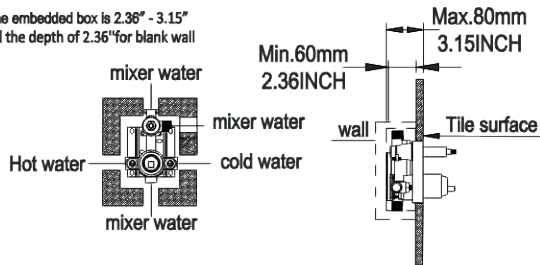


Technical drawing of drilling size

1.The size of the embedded box that needs to be drilled is 5.3" * 6.7"

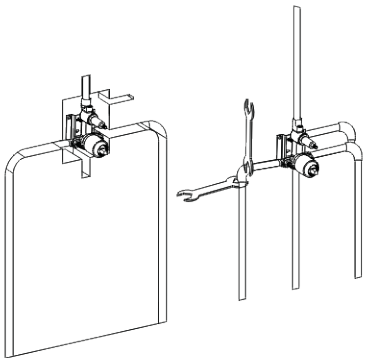


2.The depth of the embedded box is 2.36" - 3.15"
It's better to drill the depth of 2.36" for blank wall



Pipe connection

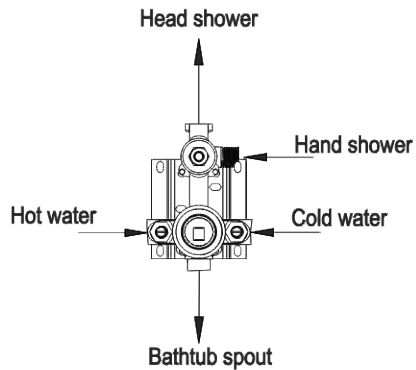
- 1.Please drill the holes on the wall for the main body embedded part, hot and cold water inlet pipes as well as shower arm connection pipes according to the basic product dimension drawing as below.
- 2.Please make hot and cold water Inlet pipe, the mixed water outlet pipe connect with control valve, and tightened with the wrench.



Water testing and sealing testing

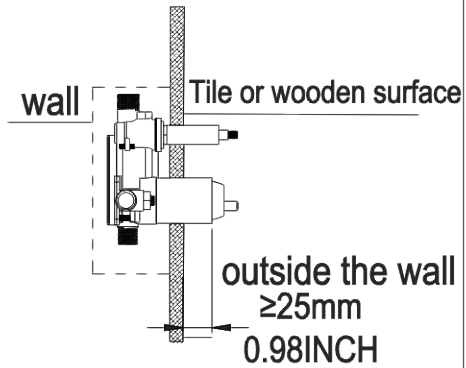
- 1.After the pipe connection is completed, open the protective panel and cover, and open the cartridge, flush the pipeline; Then close the cartridge to check the pressure resistance and sealing performance of the pipeline, make sure there are no leakage.
- 2.Block each outlet pipe with a stopper then open the cartridge to check if the pipe joint is well-sealed and the pipe condition under pressure to ensure no leakage.

Testing Purpose: Flush the impurities and sludge in the pipeline to avoid clogging and affect the effluent functions.

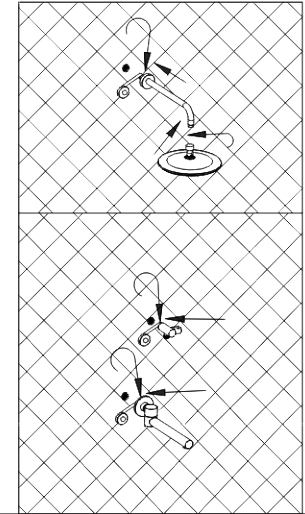


The procedure of sealing the wall

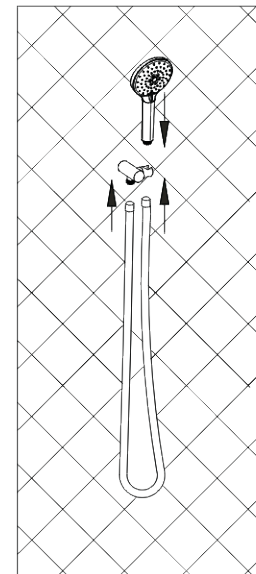
Use a parallel ruler to measure the flatness of the embedded box casing and the vertical wall surface.If the wall surface is not flat, it should be patched to ensure the embedded box casing and vertical wall angle meets at nearly ideal angle of 90, then lay the tile decoration.



Shower sets installation

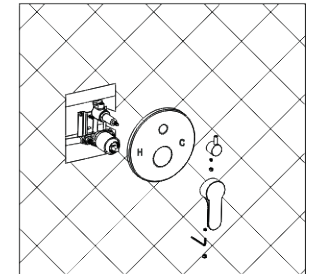


Handle shower installation

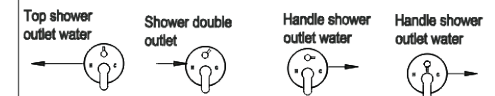


Installation of Rough-in valve

- 1.Take off the protective panel and cover
2. The decorative panel and the handle are connected to the control valve as shown below sequence



According to the figure below, please correctly adjust the direction of water separator handle



Troubleshooting

| Troubleshooting | | |
|---|--|--|
| Problem | Possible Cause | Corrective Action |
| Water does not shut off completely. | <ol style="list-style-type: none"> O-ring is not seated correctly or worn. Cartridge may be defective. | <ol style="list-style-type: none"> Reseat or replace O-ring. Replace cartridge. |
| Leaks at waterline connection. | <ol style="list-style-type: none"> Worn or broken washer. Faucet body may be defective. | <ol style="list-style-type: none"> Replace washer. Replace faucet(contact us for the replacement). |
| Leaks from handle. | <ol style="list-style-type: none"> Cartridge may come loose. Cartridge may be defective. | <ol style="list-style-type: none"> Reseat cartridge tight. Replace cartridge. |
| Leaks at hose connection. | <ol style="list-style-type: none"> Hose connection is loose | <ol style="list-style-type: none"> Tighten hose. Replace hose. |
| Leaks at shower valve connection. | <ol style="list-style-type: none"> Connection may come loose or not seated completely. Defective shower valve inlet or outlet connector. | <ol style="list-style-type: none"> Check connections. Replace valve body |
| Diverter knob does not work. | <ol style="list-style-type: none"> Diverter cartridge may be defective. | <ol style="list-style-type: none"> Replace cartridge |
| LED light does not Light or noisy LED showerhead. | <ol style="list-style-type: none"> Defective LED generator. | <ol style="list-style-type: none"> Replace LED spray head (for kitchen faucet). Replace LED threaded pipe (for separate faucet spout). Replace LED generator(for others). |
| Low flow. | <ol style="list-style-type: none"> Check for water pressure problems. Aerator may be dirty or clogged. | <ol style="list-style-type: none"> Clean or replace the aerator. Remove water flow restrictor if available. Install booster or pump(if applicable). |