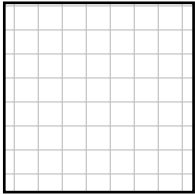


The patented triple-layer Tam-Rail® Railing System is offered in convenient kits to help make installation fast and easy. To choose the right kits for your specific application, simply follow the detailed steps in this Kit Selection Guide.



- 1 Step One—Sketch the layout and dimensions of your deck**
Use the graph paper on page 2 to determine measurements and the number of kits you will need.



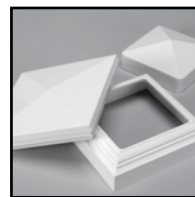
- 2 Step Two—Select your straight and stair rail kits**
Tam-Rail stair and straight rail kits are available with colonial or square balusters, in 6', 8' and 10' lengths and in 36" or 42" heights. Use the charts on page 3 to select the appropriate kits for your project. For stair rail applications, use the stair angle chart on page 2 to determine the appropriate stair kit you will need.



- 3 Step Three—Select your post kits**
Post sleeves are not included in the straight and stair rail kits. Use the chart on page 4 to determine the right post sleeves for your application.
The Tam-Rail system is designed to 1) cover a standard 4x4 wood post, 2) attach to a wood/composite deck without a wood post or 3) mount in concrete applications. See page 4 to determine the right post mount kit for your project.



- 4 Step Four—Select your special angle kits**
If your application requires special angle brackets, use the chart on page 4 to choose the appropriate kits.



- 5 Step Five—Select your post caps and rings**
Tam-Rail post caps and rings provide the perfect finishing touches. See page 5 for details.

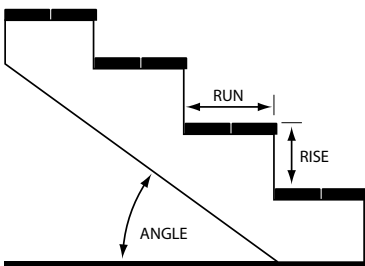


- 6 Step Six—Place your order**
Take this sheet to your local distributor, or contact TAMKO® at 1-800-641-4691 to find a dealer in your area.

1

Step One—Sketch the deck layout and determine your project's dimensions.

Please refer to the chart to the right to determine the appropriate stair kits.



TAM-RAIL® Stair Angle Chart

RUN (inches)		6.5	7	7.5	8	8.5	9	9.5	10	10.5	11	11.5	12	12.5	13	13.5	14	14.5	15
RISE (inches)	3.5	28	27	25	24	22	21	20	19	18	18	17	16	16	15	15	14	14	13
	4	32	30	28	27	25	24	23	22	21	20	19	18	18	17	17	16	15	15
	4.5	35	33	31	29	28	27	25	24	23	22	21	21	20	19	18	18	17	17
	5	38	36	34	32	30	29	28	27	25	24	23	23	22	21	20	20	19	18
	5.5	40	38	36	35	33	31	30	29	28	27	26	25	24	23	22	21	21	20
	6	43	41	39	37	35	34	32	31	30	29	28	27	26	25	24	23	22	22
	6.5	45	43	41	39	37	36	34	33	32	31	29	28	27	27	26	25	24	23
	7	47	45	43	41	39	38	36	35	34	32	31	30	29	28	27	27	26	25
	7.5	49	47	45	43	41	40	38	37	36	34	33	32	31	30	29	28	27	27
	8	51	49	47	45	43	42	40	39	37	36	35	34	33	32	31	30	29	28
	8.5	53	51	49	47	45	43	42	40	39	38	36	35	34	33	32	31	30	30
9	54	52	50	48	47	45	43	42	41	39	38	37	36	35	34	33	32	31	
9.5	56	54	52	50	48	47	45	44	42	41	40	38	37	36	35	34	33	32	
10	57	55	53	51	50	48	46	45	44	42	41	40	39	38	37	36	35	34	

- Choose Stair Rail 30°–35° kit
- Choose Stair Rail 36°–41° kit
- Outside Tam-Rail angle range

2

Step Two—Select one of three railing height/baluster design options.

Please note: 36" is the common height for meeting code requirements in residential applications and 42" is the common height for meeting code requirements in multifamily applications.

All straight rail kits include top and bottom rails, square or colonial balusters, top and bottom metal brackets, top and bottom bracket covers, stainless steel screws, a crush block and a bracket placement template.



All stair rail kits include top and bottom rails, square or colonial balusters, top and bottom metal brackets, top and bottom bracket covers and stainless steel screws. The 8' stair rail kit also includes a crush block.

36" Kits with Colonial Balusters

Colonial balusters feature beveled curves that add distinction. Select your required number of kits in the desired color and rail lengths.

Straight Rails	PROD. #	COLOR	# OF KITS
6' x 36" Straight Rail Kit	31000974	White	
	31001121	Taupe	
	31001120	Grey	
8' x 36" Straight Rail Kit	31000316	White	
	31001125	Taupe	
	31001124	Grey	
10' x 36" Straight Rail Kit	31000318	White	
	31001129	Taupe	
	31001128	Grey	

Stair Rails	PROD. #	COLOR	# OF KITS
6' x 36" Stair Rail Kit (30°–35°)	31000334	White	
	31000967	Taupe	
	31000966	Grey	
8' x 36" Stair Rail Kit (30°–35°)	31000338	White	
	31001141	Taupe	
	31001140	Grey	
6' x 36" Stair Rail Kit (36°–41°)	31000335	White	
	31001155	Taupe	
	31001154	Grey	
8' x 36" Stair Rail Kit (36°–41°)	31000339	White	
	31001159	Taupe	
	31001158	Grey	

36" Kits with Square Balusters

Square balusters create straight lines and a uniform appearance. Select your required number of kits in the desired color and rail lengths.

Straight Rails	PROD. #	COLOR	# OF KITS
6' x 36" Straight Rail Kit	31000313	White	
	31001119	Taupe	
	31001118	Grey	
8' x 36" Straight Rail Kit	31000315	White	
	31001123	Taupe	
	31001122	Grey	
10' x 36" Straight Rail Kit	31000975	White	
	31001127	Taupe	
	31001126	Grey	

Stair Rails	PROD. #	COLOR	# OF KITS
6' x 36" Stair Rail Kit (30°–35°)	31000332	White	
	31001132	Taupe	
	31001131	Grey	
8' x 36" Stair Rail Kit (30°–35°)	31000336	White	
	31000969	Taupe	
	31000968	Grey	
6' x 36" Stair Rail Kit (36°–41°)	31000333	White	
	31001153	Taupe	
	31001152	Grey	
8' x 36" Stair Rail Kit (36°–41°)	31000337	White	
	31001157	Taupe	
	31001156	Grey	

42" Kits with Square Balusters

42" Rail Kits are available only with a square baluster design. Select your required number of kits in the desired color and rail lengths.

Straight Rails	PROD. #	COLOR	# OF KITS
6' x 42" Straight Rail Kit	31000319	White	
	31001036	Taupe	
	31001035	Grey	
8' x 42" Straight Rail Kit	31000330	White	
	31001038	Taupe	
	31001037	Grey	
10' x 42" Straight Rail Kit	31000331	White	
	31001130	Taupe	
	31001039	Grey	

Stair Rails	PROD. #	COLOR	# OF KITS
6' x 42" Stair Rail Kit (30°–35°)	31000340	White	
	31001149	Taupe	
	31001148	Grey	
8' x 42" Stair Rail Kit (30°–35°)	31000342	White	
	31001151	Taupe	
	31001150	Grey	
6' x 42" Stair Rail Kit (36°–41°)	31000341	White	
	31001161	Taupe	
	31001160	Grey	
8' x 42" Stair Rail Kit (36°–41°)	31000343	White	
	31001163	Taupe	
	31001162	Grey	

3

Step Three—Select your post kits.

Post sleeves are available to cover 4x4 wood posts and enhance the look of your railing system. Post mount options are also available for use on a wood/composite deck without a wood post, or on concrete applications.



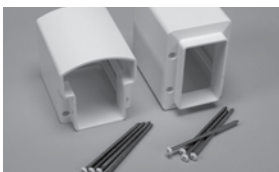
Post Sleeves	PROD. #	COLOR	# OF KITS
4" x 4" x 38" Post Sleeve Kit	31000344	White	
	31001189	Taupe	
	31001188	Grey	
4" x 4" x 48" Post Sleeve Kit	31000345	White	
	31001191	Taupe	
	31001190	Grey	
4" x 4" x 116" Post Sleeve Kit	31000308	White	
	31001193	Taupe	
	31001192	Grey	

Post Mount Kits	PROD. #	COLOR	# OF KITS
4" x 4" x 38" Post Mount Concrete Kit	31000948	White	
	31001181	Taupe	
	31001180	Grey	
4" x 4" x 44" Post Mount Concrete Kit	31000949	White	
	31001183	Taupe	
	31001182	Grey	
4" x 4" x 38" Post Mount Wood Kit	31000309	White	
	31001185	Taupe	
	31001184	Grey	
4" x 4" x 44" Post Mount Wood Kit	31000350	White	
	31001187	Taupe	
	31001186	Grey	

4

Step Four—Select your special angle adapter kits.

If your application has unique horizontal angles, you will need to select the appropriate angle adapter kits.

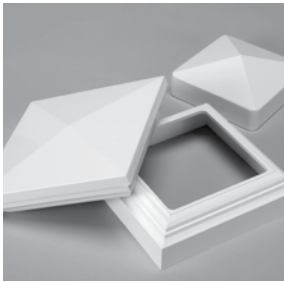


Individual Angle Adapter Kits	PROD. #	COLOR	# OF KITS
45° Center Fixed Angle Adapter Kit	31000945	White	
	31001173	Taupe	
	31001172	Grey	
22.5° Left Fixed Angle Adapter Kit	31000946	White	
	31001175	Taupe	
22.5° Right Fixed Angle Adapter Kit	31000947	White	
	31001177	Taupe	
	31001176	Grey	
Multiangle Bracket Kit	31000354	White	
	31001179	Taupe	
	31001178	Grey	

5

Step Five—Select your post cap and rings.

Post caps and the New England-style post ring provide the perfect finishing touches.



Post Caps and Rings	PROD. #	COLOR	# OF KITS
4" x 4" Pyramid Post Cap	31000355	White	
	31001195	Taupe	
	31000355	Grey	
4" x 4" New England Post Cap	31000356	White	
	31001197	Taupe	
	31001196	Grey	
4" x 4" New England Post Ring	31000358	White	
	31001201	Taupe	
	31001200	Grey	

6

Step Six—Place your order.

Take this sheet to your local distributor, or contact TAMKO® at 1-800-641-4691 to find a dealer in your area.



BUILDING PRODUCTS

tamko.com

P.O. Box 1404 • Joplin, MO 64801

1-800-641-4691