



see what Delta can do™

TUB & SHOWER FAUCET TRIM

- Modern Angular
- Valve Only Trim (T14067-PP)
- Shower Only Trim (T14267-PP)
- Tub/Shower Trim (T14467-PP)
- Shower Only Trim – Less Showerhead (T14267-LHD-PP)
- Tub/Shower Trim – Less Showerhead (T14467-LHD-PP)

STANDARD SPECIFICATIONS

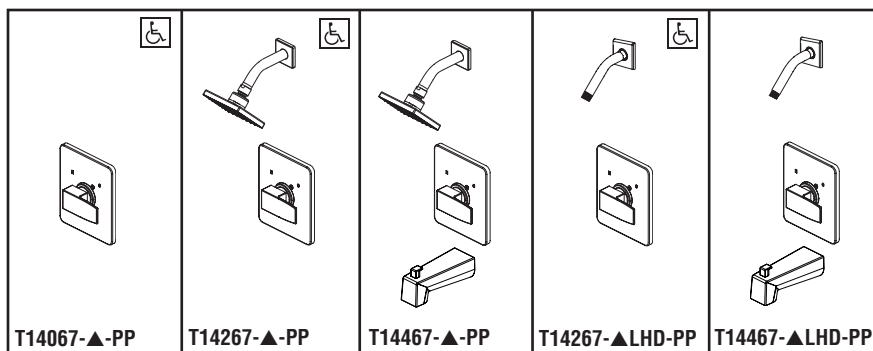
- Single handle pressure balanced tub and shower mixing valve
- Maintains a balanced pressure of hot and cold water even when a valve is turned on or off elsewhere in the system
- For use with MultiChoice® Universal rough valve body – NOT INCLUDED and MUST BE ORDERED SEPARATELY (R10000 Series)
- Back-to-back installation capability
- Field adjustable means to limit handle rotation into hot water zone
- Temperature only controlled with handle
- All parts replaceable from the front of the valve
- "LHD" indicates less showerhead models
- Max. flow rate of spout 6.0 gpm @ 60 psi, 22.7 L/min @ 414 kPa with R10000-UNBX
- Max. flow rate of showerhead 1.75 gpm @ 80 psi, 6.6 L/min @ 552 kPa
- Universal adpater included allows for thread, aseat or slip-on installation of tub spout.

WARRANTY

- Parts and Finish - Lifetime limited warranty; or for commercial purchasers, 10 years for multi-family residential (apartments and condominiums) and 5 years for all other commercial uses, in each case from the date of purchase.
- Electronic Parts and Batteries (if applicable) - 5 years from the date of purchase; or for commercial purchasers, 1 year from the date of purchase. No warranty is provided on batteries.

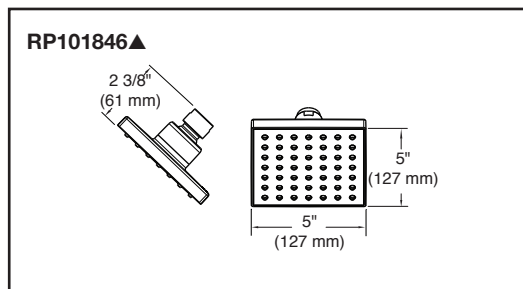
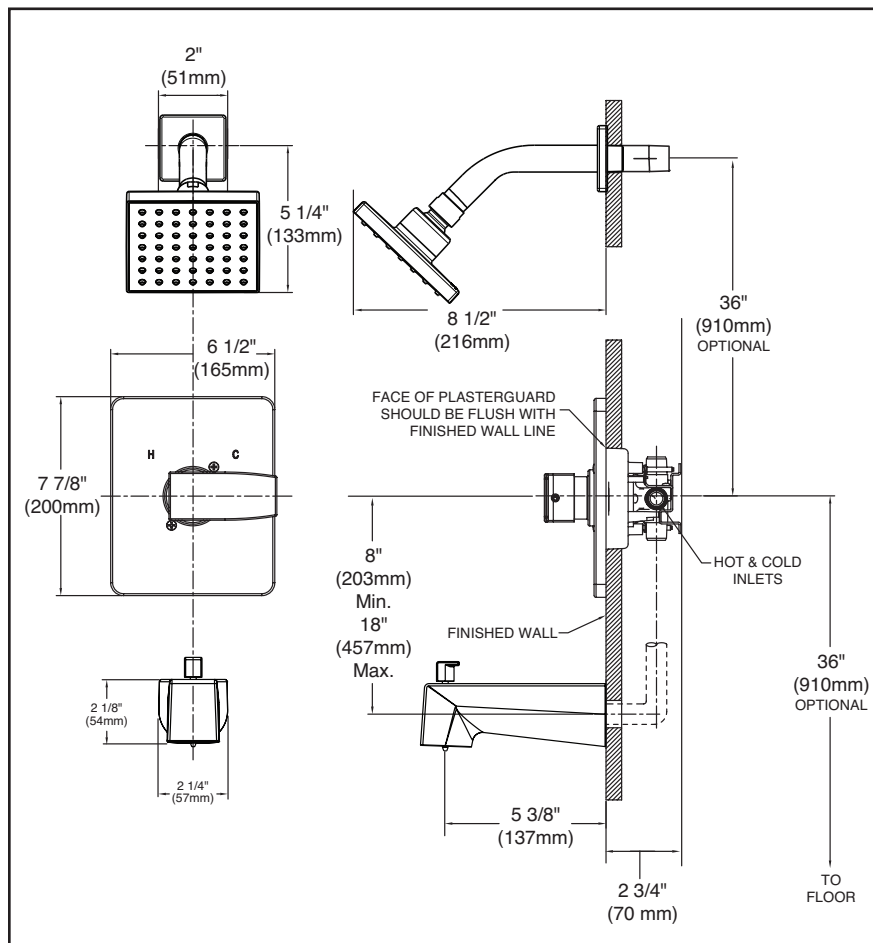
COMPLIES WITH:

- ASME A112.18.1 / CSA B125.1
- ASSE 1016-P
- Indicates ADA compliance to ICC/ANSI A117.1 – Valve control only



Submitted Model No.: _____

Specific Features: _____



▲ Designate Proper Finish Suffix

