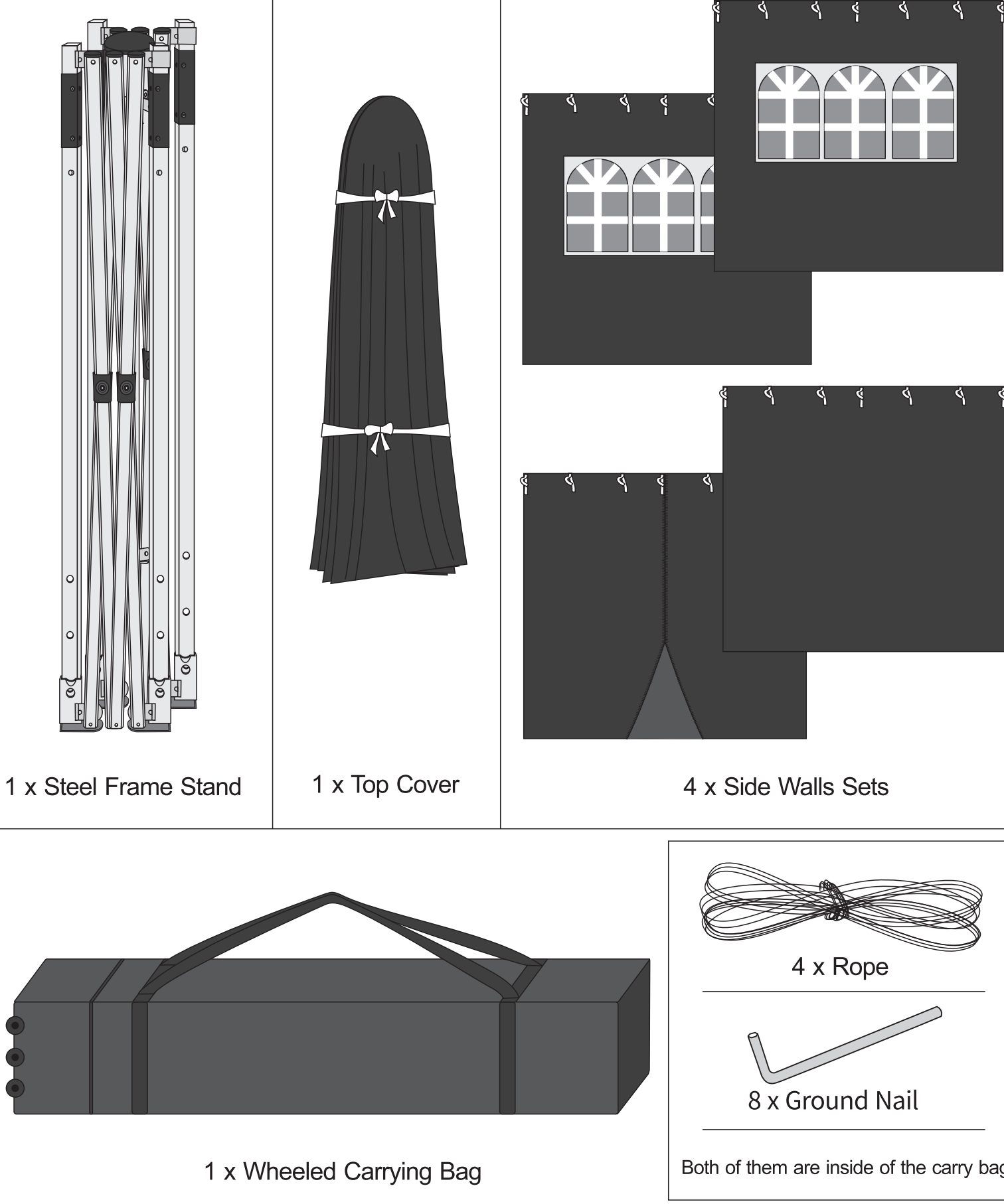
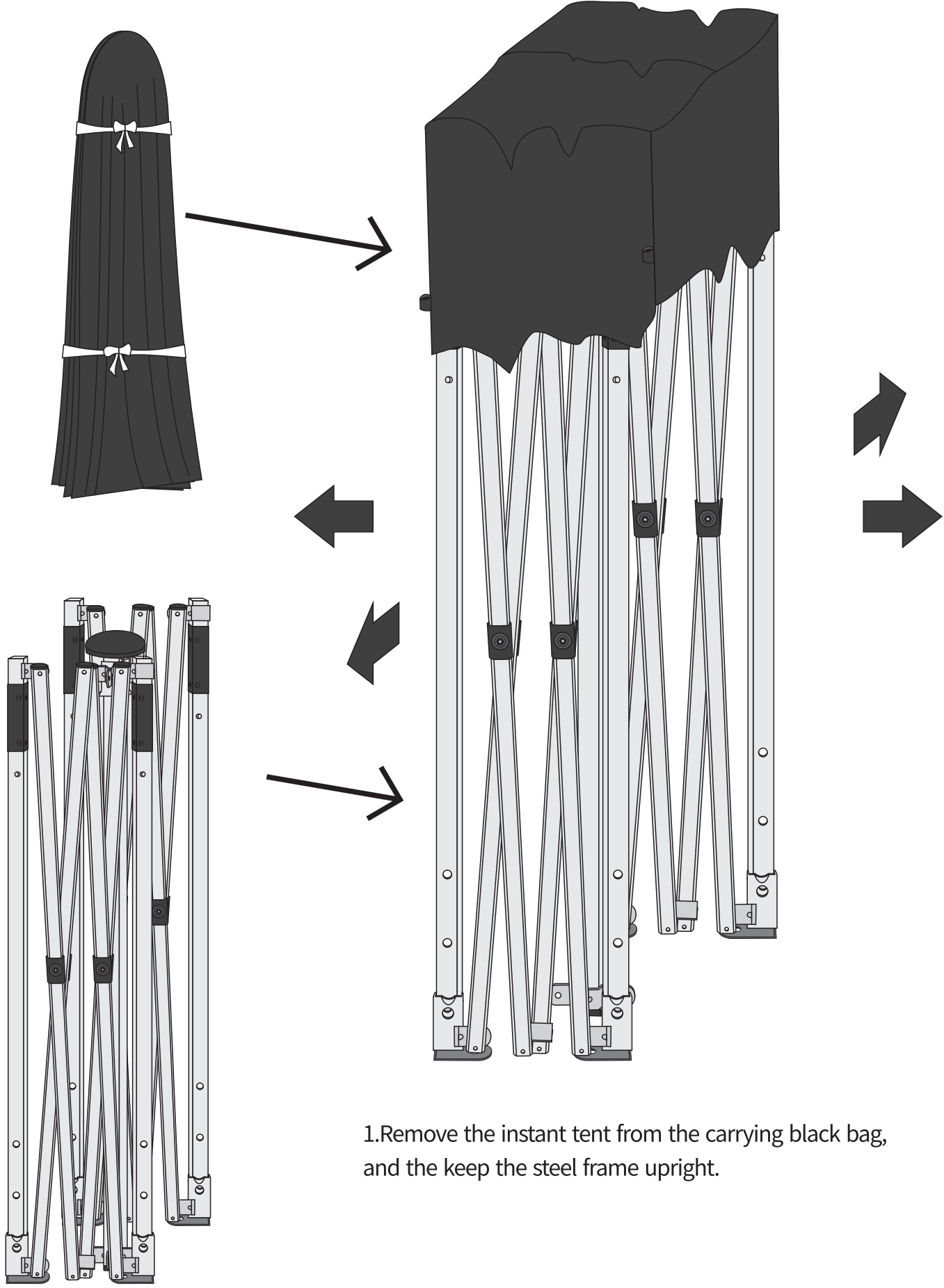


Main Components

Canopy Tent (SKU # ODF004)

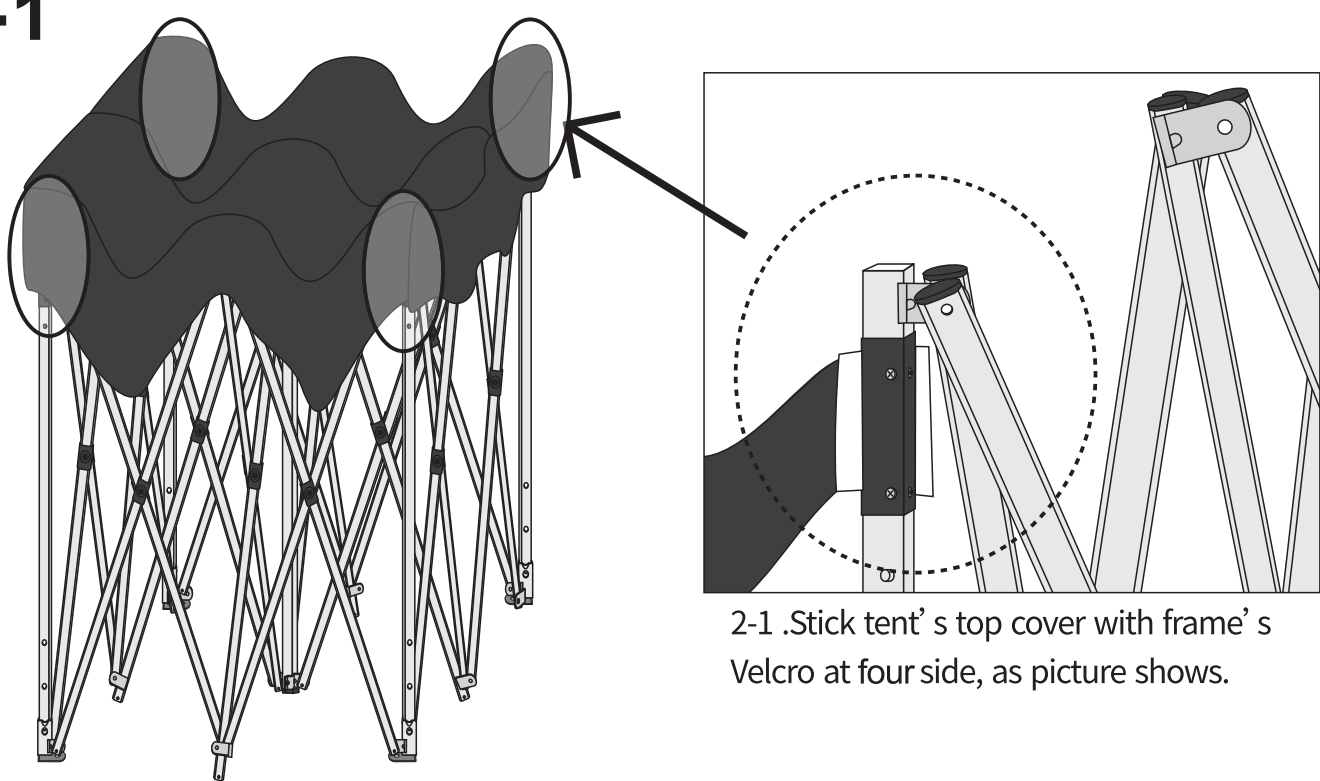


①



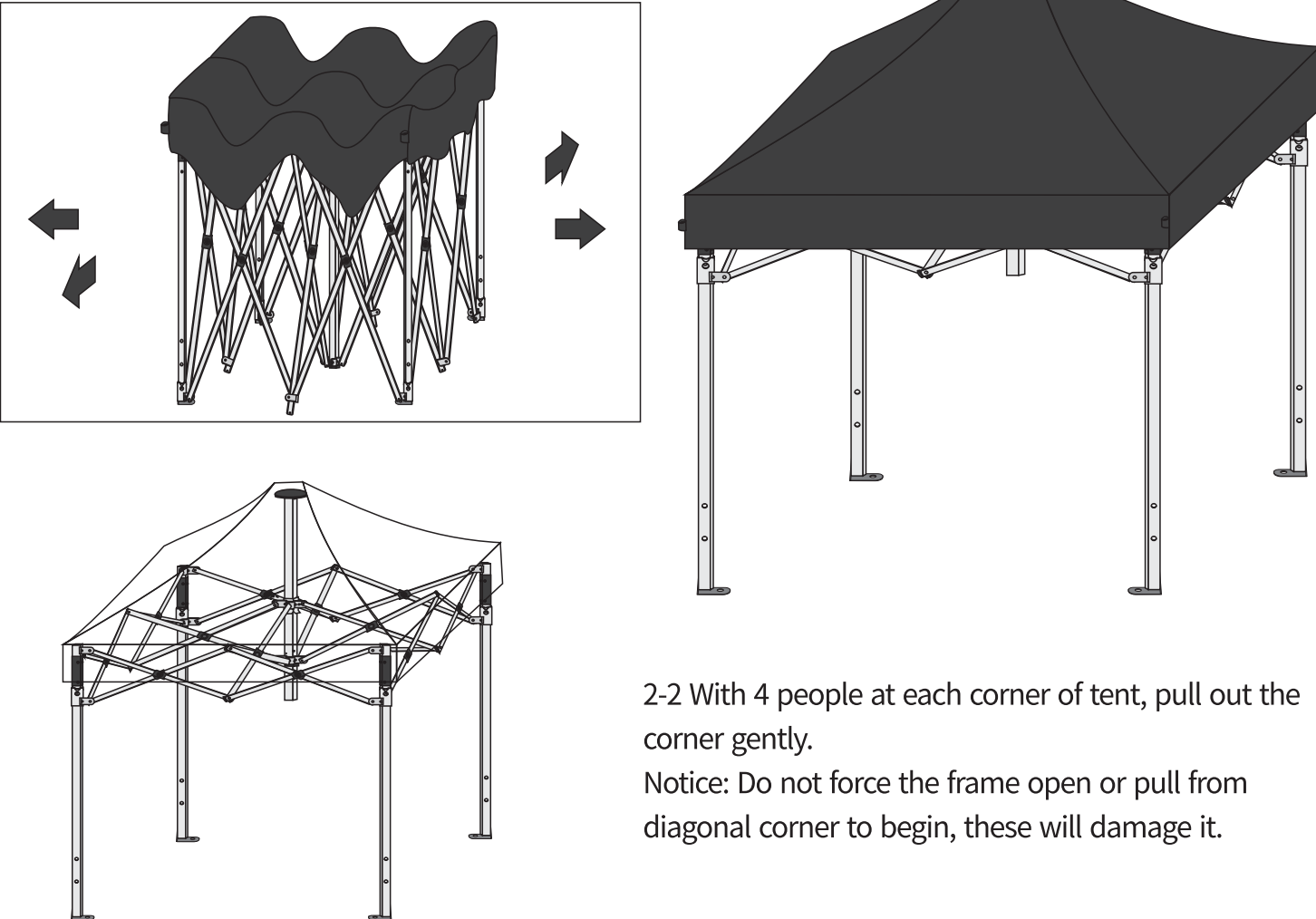
1.Remove the instant tent from the carrying black bag, and the keep the steel frame upright.

② -1



2-1 .Stick tent' s top cover with frame' s Velcro at four side, as picture shows.

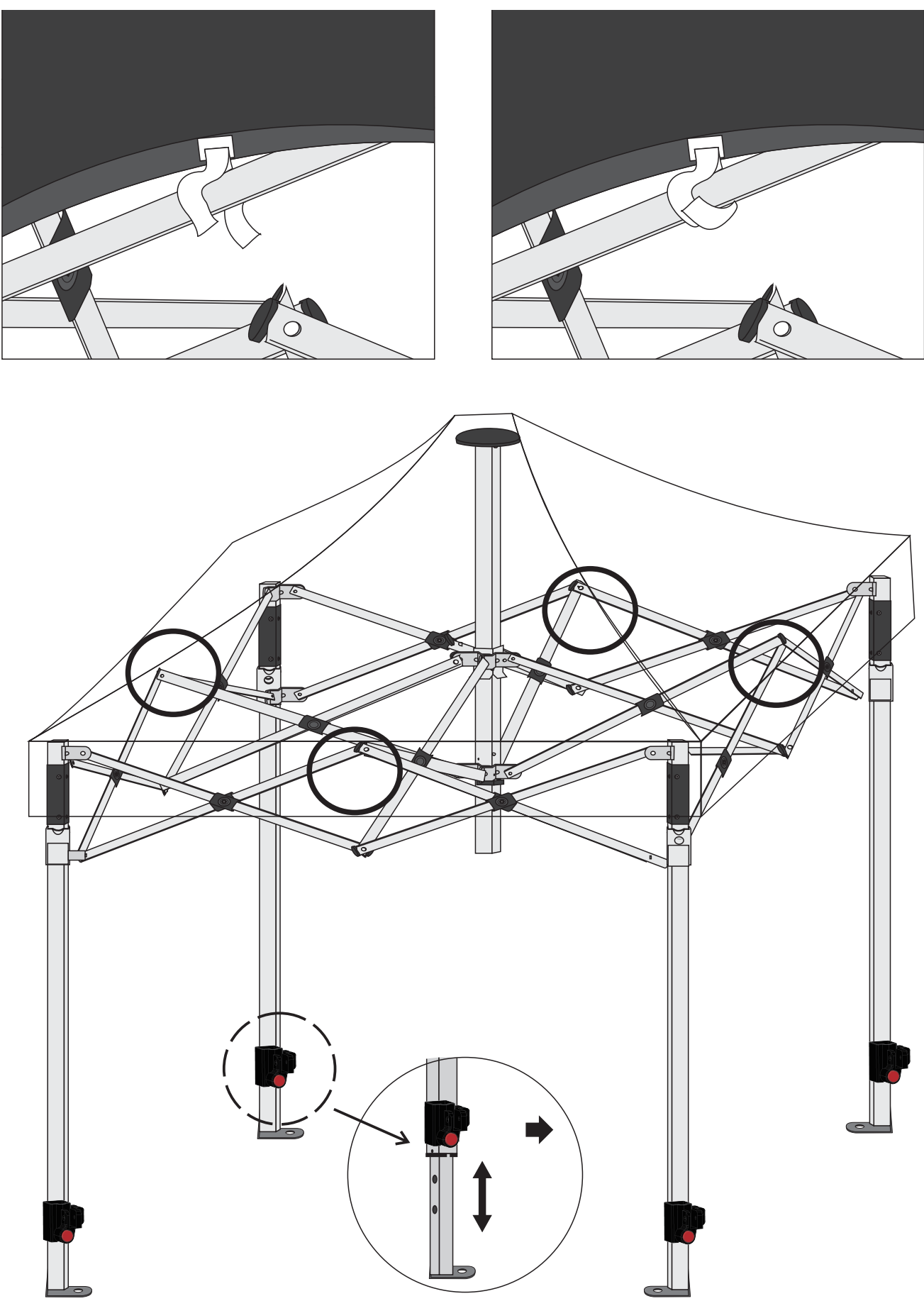
② -2



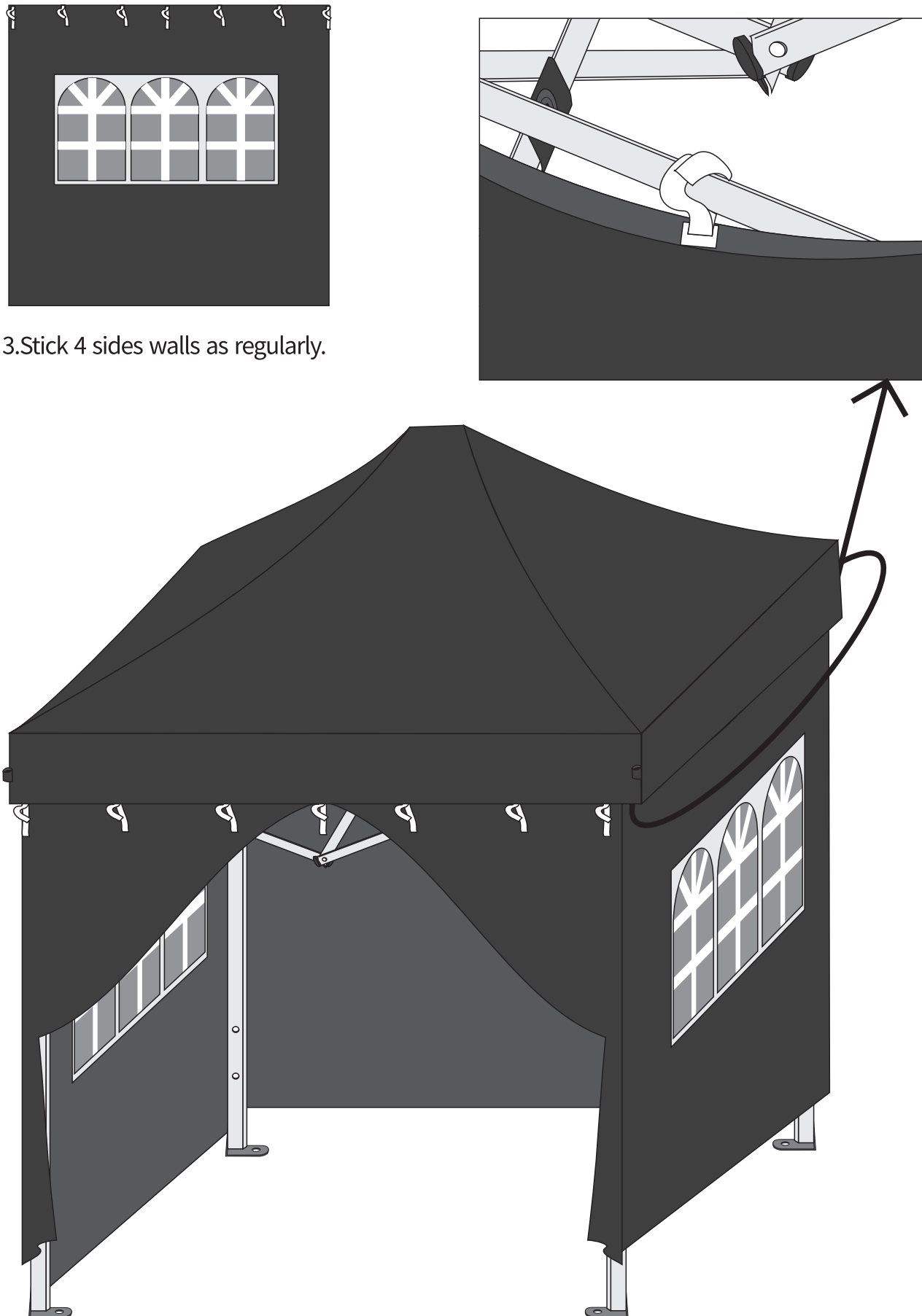
2-2 With 4 people at each corner of tent, pull out the corner gently.
Notice: Do not force the frame open or pull from diagonal corner to begin, these will damage it.

② -3

2-3 .Secure the sides of the tent to the frame with Velcro, as pictures show.

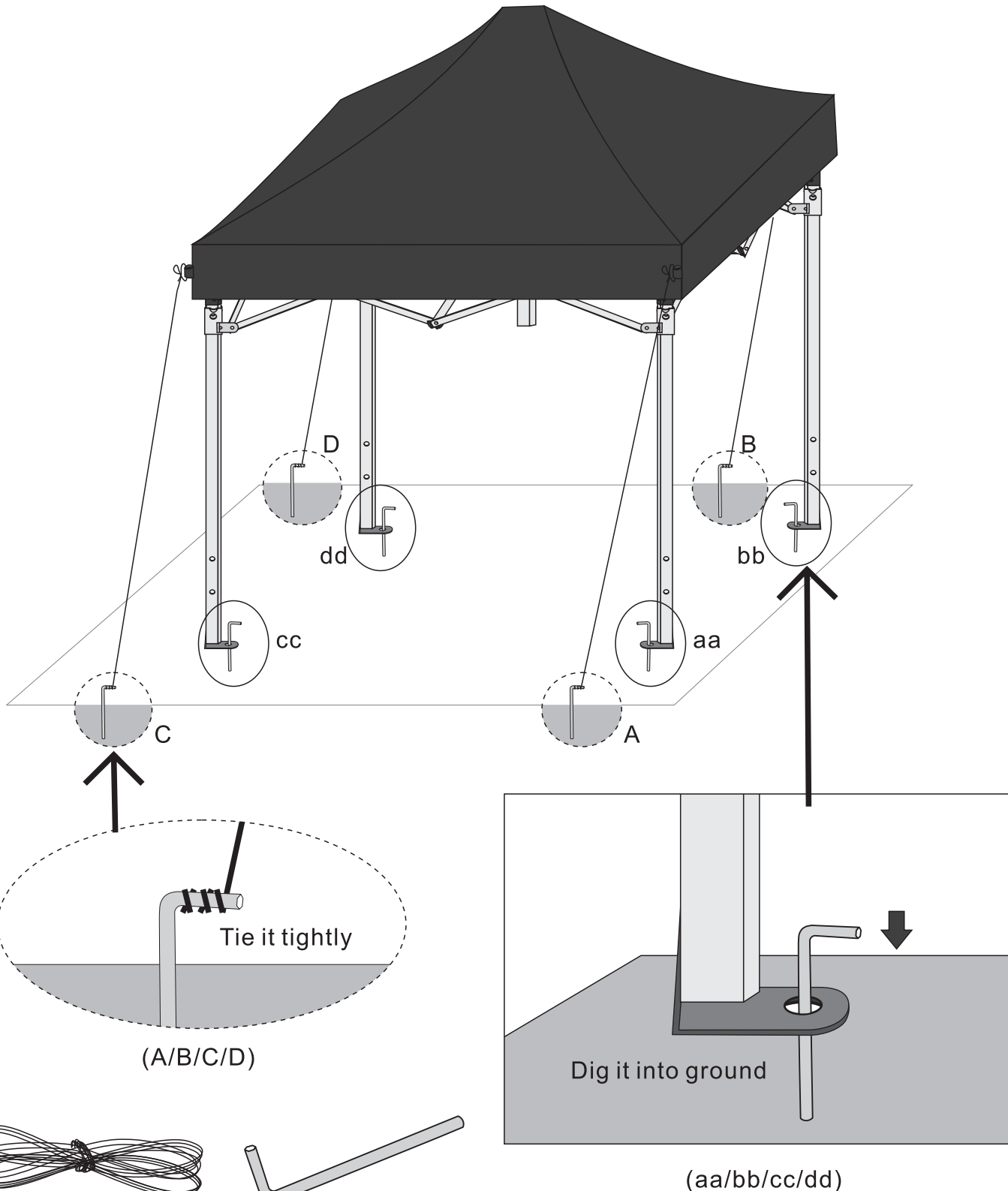


③



3.Stick 4 sides walls as regularly.

④



4.Install the following parts - aa, bb,cc,ddas showed in pictures: make the ground-nail through the hole of bottom of each steel main stand then push it into the ground.

For the following part - A, B, C, D :

Twine the same rope on the top steel frame and ground-nail, at the same time, please tie them tightly, and dig all ground-nails into the ground.

Please follow above instructions to make your tent stable enough to use.

⑤

5.HOW TO FOLD BACK

Each main stand has two clips,one is at top and the other is at the middle,push in them and the tent will be folded back as regularly.

