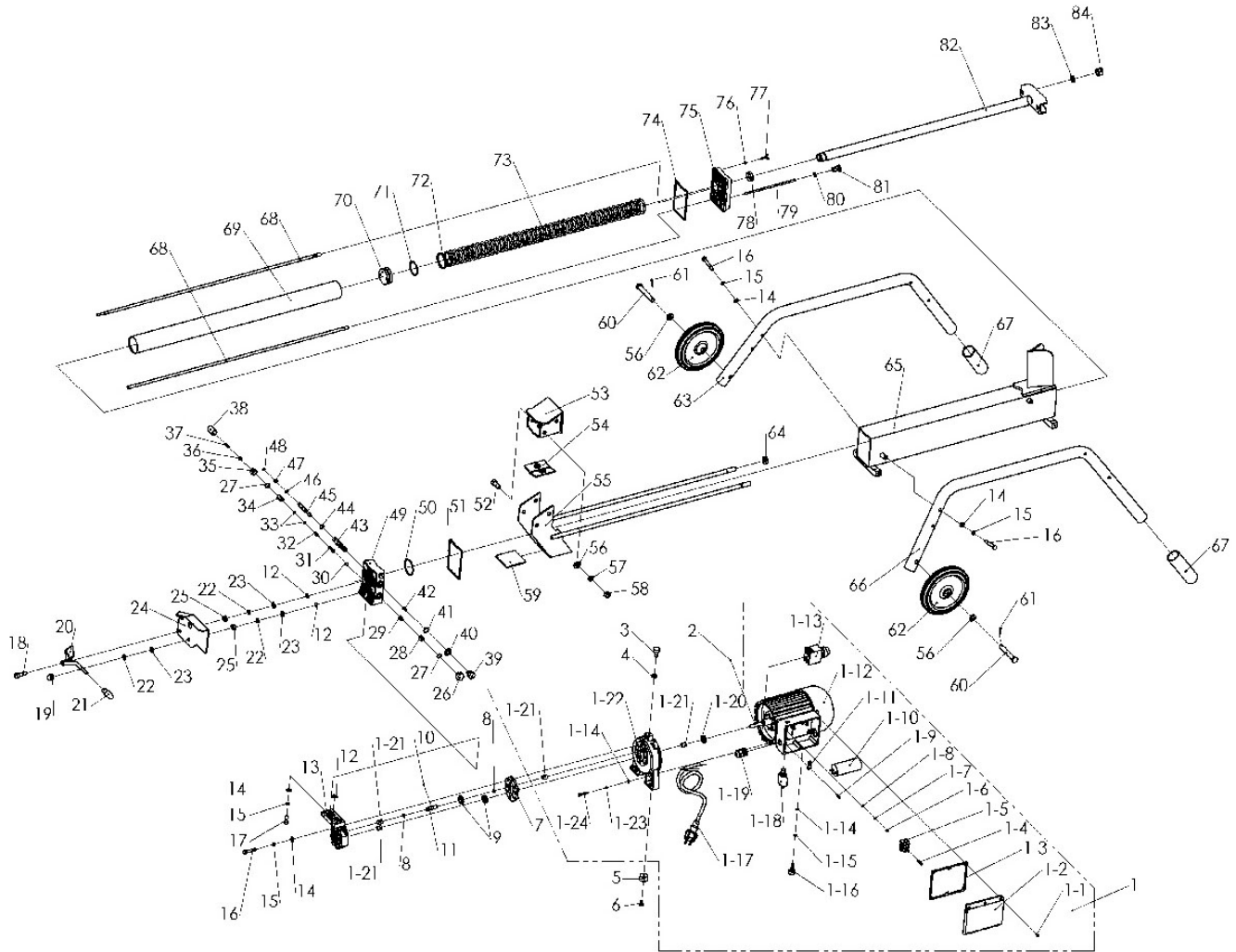


PARTS DIAGRAM



PARTS LIST

Part No.	Description	Qty	Part No.	Description	Qty
1	Motor	1	21	Adjust handle cap	1
1-1	Self-tap screw	6	22	Elastic washer	5
1-2	Upper switch box cover		23	Flat washer	5
1-3	Rubber pad	1	24	Protecting guard	1
1-4	Screw	2	25	Nut	2
1-5	Connection block	1	26	Hex nut	1
1-6	Screw	1	27	Sealing ring	2
1-7	Elastic washer	1	28	Screw	1

1-8	Tooth washer	1	29	Oil cave	1
1-9	Self-tap screw	2	30	Cone cave	1
1-10	Capacitor	1	31	Adjusting spring	1
1-11	Clamping clip	1	32	Minor shaft	1
1-12	Motor body	1	33	Sealing ring	2
1-13	Switch	1	34	Tub for minor shaft	1
1-14	Flat washer	3	35	Nut	1
1-15	Nut	1	36	Nut	1
1-16	Rubber pad	1	37	Locking screw	1
1-17	Plug cord	1	38	Plastic cap	1
1-18	Overload protector	1	39	Position bolt	1
1-19	Bushing	1	40	Copper washer	1
1-20	Gasket	1	41	Sealing ring	1
1-21	Spindle sleeve	4	42	Spring	1
1-22	Front cover	1	43	Controlling valve	1
1-23	Elastic washer	3	44	Sealing ring	5
1-24	bolt	3	45	Traveling valve	1
2	Pin	1	46	Sealing ring	1
3	Rubber pad	1	47	Spring	1
4	Nut	1	48	e-ring	1
5	Rubber pad	2	49	Front cover	
6	Bolt	10	50	Sealing ring	1
7	Clapboard	1	51	Front cover ring	1
8	Steel ring	2	52	Bolt	4
9	Gear wheel	2	53	Pressing head	1
10	Steel ball	1	54	Upper pad	1
11	Gear axis	1	55	Log pusher	1
12	Sealing ring	6	56	Flat washer	6
13	Oil pump body	1	57	Elastic washer	4
14	Flat washer	17	58	Nut	4
15	Elastic washer	17	59	Lower pad	1
16	Bolt	14	60	Rolling wheel shaft	2
17	Bolt	3	61	Pin	2
18	Screw	1	62	Rolling wheel	2
19	Nut	3	63	Supporting leg	1
20	Adjust handle	1	64	Nut	1

65	Oil tank		76	Sealing ring	76
66	Supporting leg		77	Butterfly screw	77
67	Rubber tube		78	Dust-proof ring	78
68	2-head rod		79	Dip stick	79
69	Cylinder tube		80	Sealing ring	80
70	piston		81	Oil lever stick cap	81
71	Sealing ring		82	Piston shank body	82
72	Sliding ring		83	Elastic washer	83
73	Pressing ring		84	Thick nut	84
74	Back cover ring				
75	Back cover				