


POWERSMART[®]

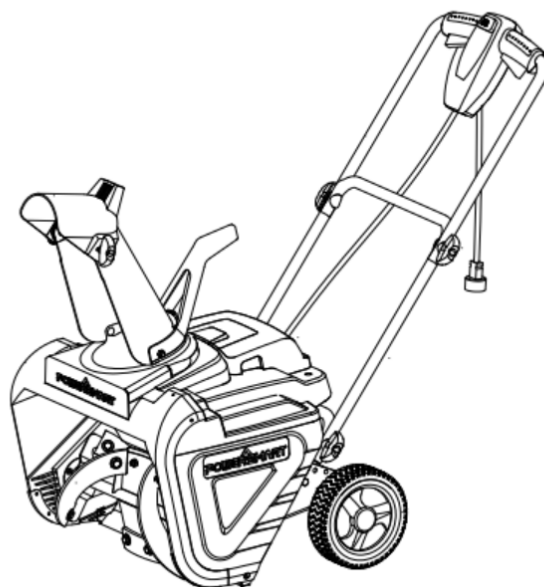
INSTRUCTION MANUAL

EN 21" ELECTRIC SNOW THROWER

FR 21" CHASSE-NEIGE ÉLECTRIQUE

ES LANZDE NIEVE ELECTRICA DE 21"

Model # DB5021



Have product questions or need technical support? Please feel free to contact us!

Website: www.Amerisuninc.com
www.PowerSmartUSA.com

Toll free: 1-800-791-9458 Mon-Fri 9-5 EST

Email: support@amerisuninc.com

TABLE OF CONTENTS

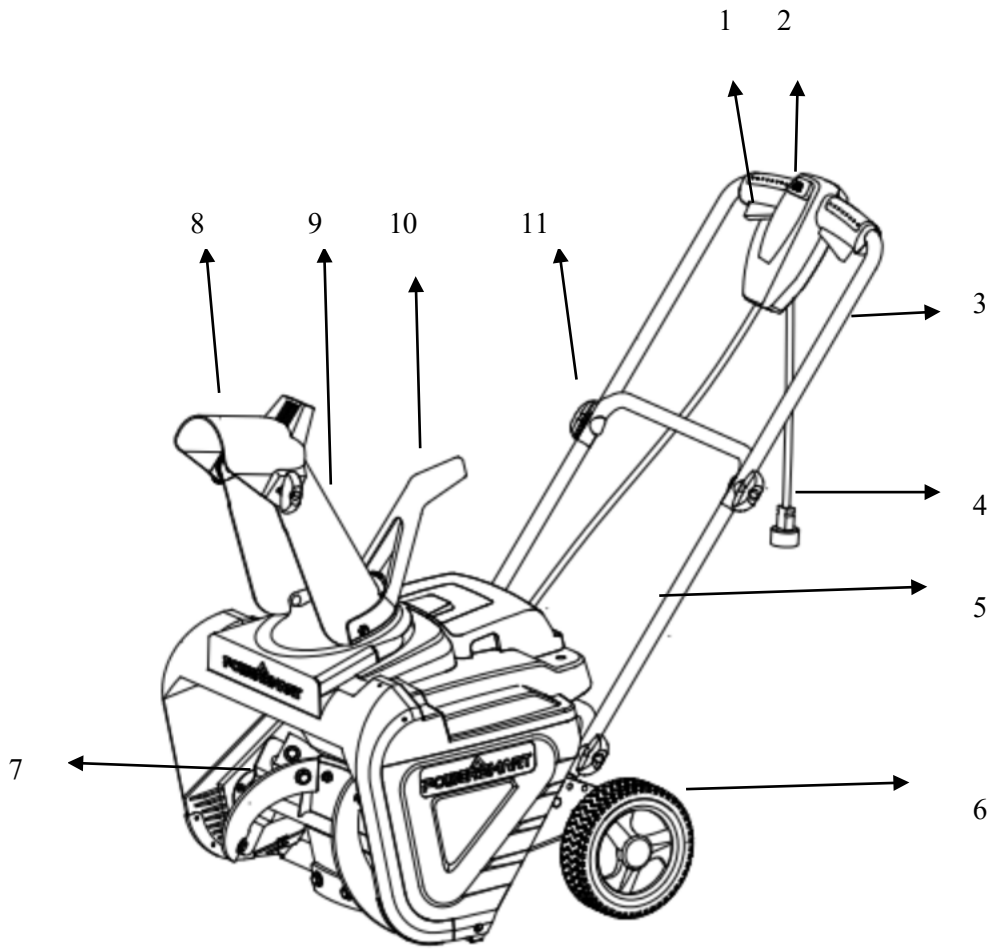
EN

Feature Identification	4
Safety Information.....	5
Assembly Instructions	8
Operating Instructions	11
Troubleshooting	16
Care and Maintenance	17
Exploded View and Part List.....	18
Two Years Limited Warranty.....	22

PRODUCTS SPECIFICATIONS

Voltage:120v,60Hz
Input Power:15Amp
Rotation speed:2,100 RPM
Clearing width and depth: Approx. 53 cm x 27 cm (21 in. x 11 in.)
Max. throwing distance: 10 m (30 ft.)
Net Wight:18 kg (40lbs)

FEATURE IDENTIFICATION



- | | | | |
|---|----------------|----|-----------------|
| 1 | Auger Control | 7 | Auger |
| 2 | Switch button | 8 | Chute Deflector |
| 3 | Upper Tube | 9 | Chute |
| 4 | Polarized Plug | 10 | Chute Crank |
| 5 | Lower Tube | 11 | Knob |
| 6 | Wheel | | |

SAFETY INFORMATION

Please read and understand this entire manual before attempting to assemble, operate or install the product.

Work Area

- Keep work area clean and well-lit. Cluttered, dark areas invite accidents.
- Do not operate snow thrower in an explosive atmosphere, such as in the presence of flammable liquids, gases, or dust. Electrical appliances create sparks that may ignite the dust or fumes.
- Keep children, pets, and bystanders away from work area. Be aware that the normal noise of the machine when turned on may make it difficult for you to hear approaching people.

Electrical Safety

- Electrical plugs must match the outlet. Never modify the plug in any way. Do not use any adaptor plugs with grounded appliances. Unmodified plugs and matching outlets will reduce risk of electric shock.
- Avoid body contact with earthed or grounded surfaces such as pipes, radiators, ranges, and refrigerators. There is an increased risk of electric shock if your body is earthed or grounded.
- Do not abuse the cord. Keep cord away from heat, oil, sharp edges or moving parts. Do not yank the cord to disconnect it from the electrical outlet.
- Replace or properly repair damaged cords. If cord is damaged in any manner while plugged in, pull the extension cord from the wall receptacle.
- Contact with water while operating the snow thrower can result in electric shock and serious bodily injury. Do not use the snow thrower in damp or wet locations or expose to rain. Do not handle the plug or the appliance with wet hands or while standing in water.
- Extension Cord-WARNING –Only use a UL-rated extension cord for OUTDOOR, all-weather use (usually orange color).The extension cord MUST be of the proper gauge size depending on it's length(see page 14).To prevent the extension cord from disconnecting during operation.tie it around top right side of the middle frame before connecting it to the snow thrower as shown in Figure 2 on page 14.
- Turn off the power switch and disconnect the power cable before inspecting, servicing, repairing, or cleaning the snow thrower stop completely.
- Do not move or transport the snow thrower when the plug is connected to the power socket and the switch is turned on.

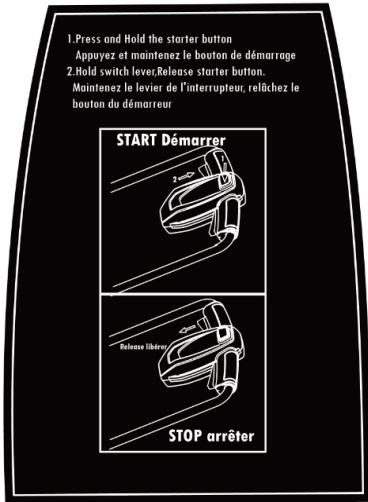
Personal Safety

- Stay alert-watch what you are doing and use common sense when operating the snow thrower.
- Do not use the machine when tired, ill, or under the influence of drugs, alcohol, or medication. A moment of inattention may result in serious personal injury.
- Wear proper clothing-Wearing rubber boots offers additional protection from electric shock. Do not wear loose clothing or jewelry that may become caught in the machine. Wear protective headgear to keep hair away from revolving parts of the machine. Safety glasses offer better protection than everyday eyeglasses.
- Moving parts present risks –Keep your face, hair, clothing, hands, and feet away from moving parts. All guards and safety attachments must be installed properly before using the unit. Shut off and disconnect cord before touching any parts other than handles and switch.
- Surfaces-This snow thrower is intended for use on paved surfaces. Do not use on gravel, stone, or other unpaved surfaces unless the snow thrower is adjusted for such surfaces according to the instructions given in the operators manual.
- Avoid accidental starting –Make sure the switch is in the off position before plugging in the unit. Do not carry the snow thrower with your finger on the switch.

-
- Body position-Maintain proper footing and balance at all times. Place heels firmly on the ground and tightly grasp the handle bar. Watch for uneven surfaces and do not over reach. In case you fall or collide with the snow thrower, inspect the unit for damage. When stepping backwards, be careful to avoid obstacles beneath your feet or behind you to avoid falling.
 - Snow Thrower Use and Care
 - Know your snow blower-Familiarize yourself with the main parts of your snow thrower. Read the operators manual carefully. Learn your snow throwers applications and limitations as well as specific potential hazards related to this machine. Do not use this machine for any purpose other than one for which it was designed. Otherwise, it may cause mechanical defaults, serious damage or personal injury.
 - Preliminary unit inspection –Thoroughly inspect the unit before use. Make sure all the parts are secure and installed correctly. If you notice any abnormalities, do not use the machine until it has been properly repaired. Always perform a test run the first time you use the snow thrower or after replacing parts to ensure that unit is functioning properly.
 - Preliminary area inspection-Clear the area to be plowed before each use. Remove all objects such as rocks, broken glass, nails, wire, or string which can be thrown by or become entangled in the snow thrower .Keep the area of operation clear of other people and pets.
 - Excessive force –The snow thrower was designed to respond at a certain rate for various snow conditions for optimum safety band performance. Do not force it; keep pressure constant.
 - Malfunctioning switch-Do not use the snow blower if the switch does not turn it on and off. Any electrical appliance that can not be controlled by the switch is not safe to use and must be repaired.
 - Hitting an object-If the snow thrower accidentally strikes an object, stop the snow thrower. Inspect for damage; repair or replace any damaged part before restarting and operating the snow thrower.
 - Discharge chute safety -Never direct the snow discharge chute at the operator, at bystanders, at vehicles or at windows. Thrown snow and foreign objects accidentally picked up by the snow thrower can cause serious damage and personal injury. Do not use your hands to unclog the discharge chute. Stop the motor before removing debris.
 - Abnormal operation-If you notice the snow thrower running in an unstable state or hear abnormal sounds from machine, stop the machine, disconnect the power immediately, and contact your original distributor.
 - Noise control-When using the snow thrower, you must respect local laws and regulations regarding noise control and environmental protection. To avoid noise disturbance, you should carefully decide upon an appropriate operation time and consider the surrounding conditions.
 - When work is completed -Disconnected the snow thrower from the power source when not in use, when changing accessories, and before performing any maintenance.
 - Store safety-Store snow thrower indoors in a dry area between uses. Keep in a locked area where children and unauthorized users can not gain access. Do not store the machine while it is still connected to the power source. It may cause damage and injury.
 - Maintain for safety and longevity-Check for misalignment or binding of moving parts, breakage of parts, and any other conditions that may affect the units operation. If damaged, repair or replace the damaged part before use. Use only those replacement parts made for your model. When replacing any parts, you must strictly observe the instructions and procedures described in this manual. Special care should be paid to any rubber parts, since these parts may increase the engine load and decrease its mechanical power if damaged.

PRODUCT LABELS

WARNING-Read, understand and follow all safety labels and markings on the unit.

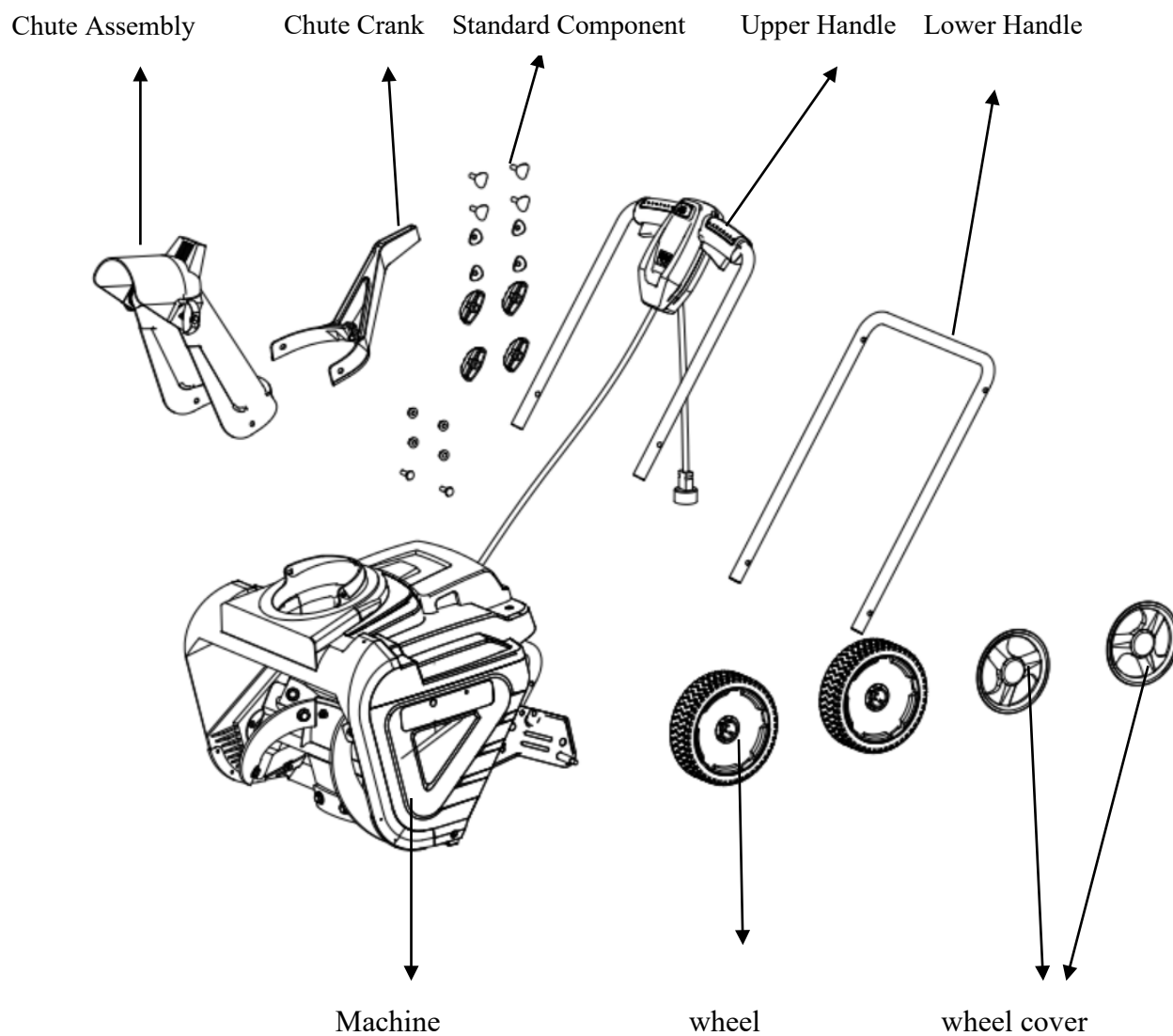


CAUTION

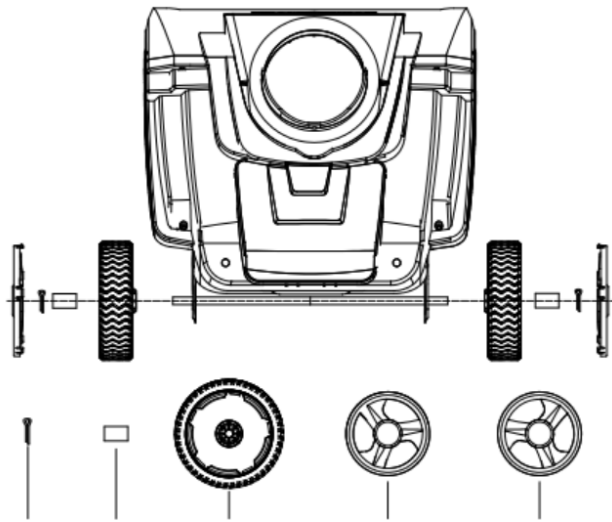
Inspect wiring, which, if damaged during shipping, may cause serious bodily injury during equipment use. If any damage is seen or suspected, do not assemble. Instead, contact our customer service department at 1-800-791-9458. Handle with care during assembly so that electrical wiring does not become damaged.

ASSEMBLY INSTRUCTIONS

1 .Remove the machine and accessories from the packing box

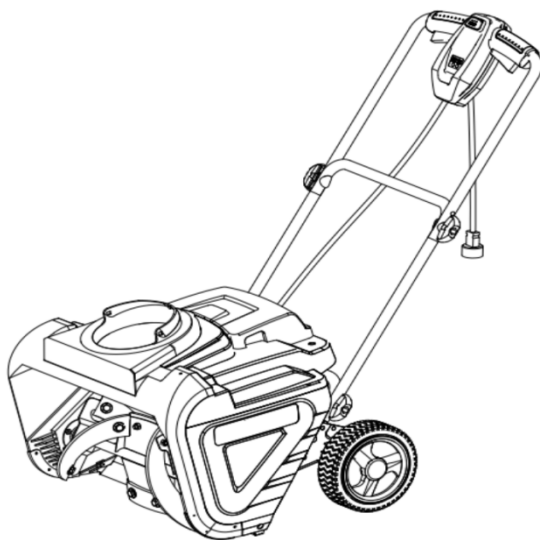


-
2. Place wheel to the axle shown below and insert the cotter pin into the hole in the axle.
Bend the cotter pin and install the wheel cover.

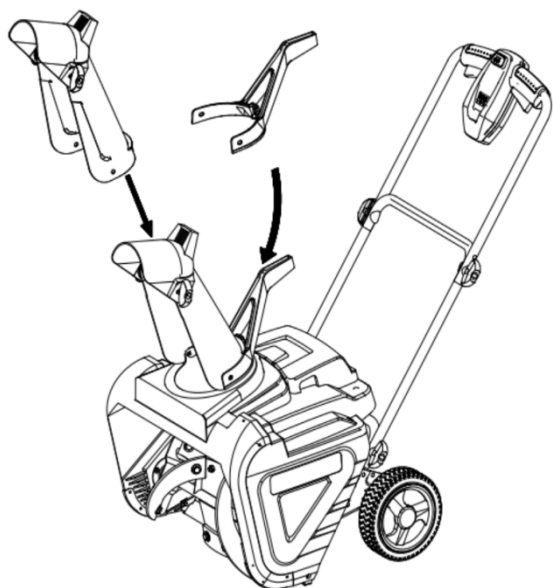


Cotter pin (2) Spacer (2) wheel (2) wheel cover L wheel cover R

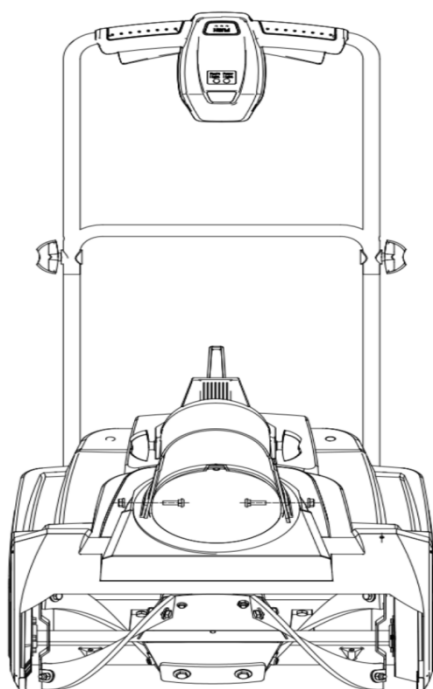
3. Place upper&lower tube in the position shown below and tighten the knobs.



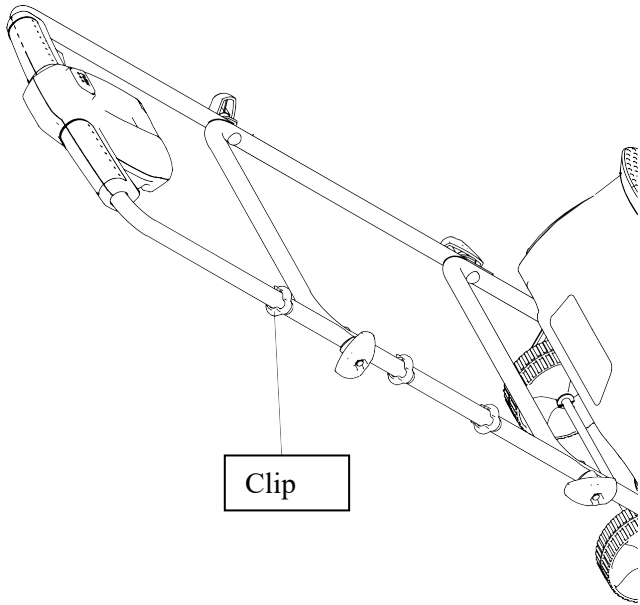
4. Place the Chute assembly on the rotating bracket as shown in below.



5. Use two screws to lock the chute assembly into rotation bracket.



6. Locate the three cable clips in the parts bag. Secure the power cord to the frame of the unit by clipping them onto the frame at evenly spaced intervals.



OPERATING INSTRUCTIONS

Note: Before using this machine, make sure that the power source you will use complies with the specification's detailed in this manual. Before inserting the plug into the socket, verify that the snow thrower's auger and scraper are firmly attached with screws. Perform a test run to ensure that the rotor turns freely.

SECURING THE EXTENSION CORD

1. For safe and efficient use of your snow thrower, use only a UL-rated extension cord recommended for outdoor use. Refer to the Extension Cord Chart below.

⚠ WARNING

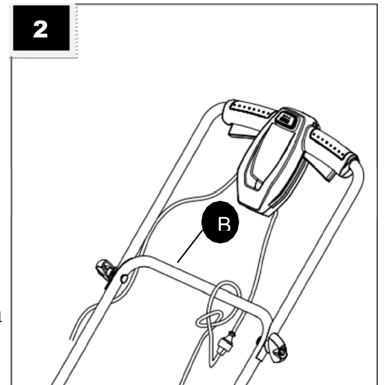
Electric shock may cause SEVERE INJURY or DEATH. Heed these warnings:

- Do not allow any part of snow thrower to make contact with water while powered on. If the appliance becomes wet while turned off, wipe dry before starting.
- Use only a UL-rated extension cord for outdoor, all-weather use. Do not use an extension cord more than 150 feet long.
- Don't touch the appliance or its plug with wet hands or while standing in water. Wearing rubber boots offers some protection.

EXTENTION CORD CHART

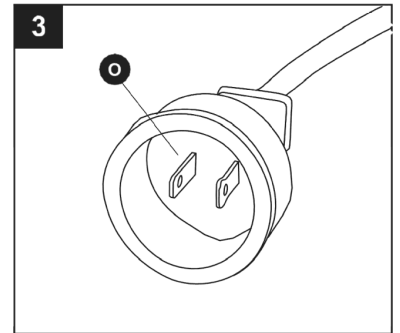
Cord Length	Up to 100 ft.	100-150ft.
Wire Gauge	14	12

- To prevent the extension cord from disconnecting during use, tie the female end of the extension cord in to a loose knot on the top right side of the middle frame (B) before connecting to the male plug in the socket of the snow thrower.



Note: The protective cover around the polarized plug is compatible with most extension cords. When choosing an extension cord be sure the female end of your cord will fit into the polarized plug.

- Note that the snow thrower has a polarized male plug (O), with one prong in the socket slightly longer and wider than the other. The extension cord female end should be likewise polarized, so that the extension cord fits snugly into the socket.



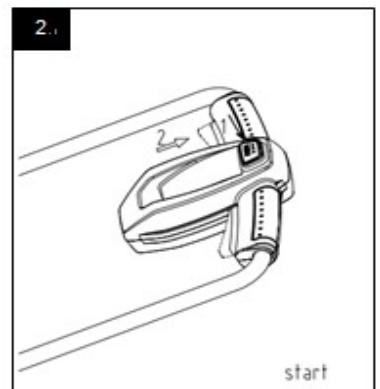
WARNING

Damaged electrical cords present risk of fire, electric shock, and serious bodily injury.

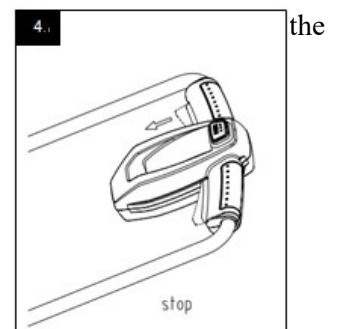
Before operating the snow thrower, carefully examine the electrical cord. If the cord is damaged, do not use the snow thrower. Replace or repair the damaged cord immediately. If you need assistance, contact our customer service department at 1-800-791-9458.

POWERING ON AND OFF

- Connect extension cord to the male plug on the snow thrower then connect extension cord to proper AC power source.
- Press and Hold the switch button.



- To start, while holding the switch button in, pull the handlebar toward you until it touches the handle. The switch button must be pressed in and held before pulling handle. Once the snow thrower starts, release the switch button.
- To stop, release switch button.



MOVING THE MACHINE AND PLOWING THE SNOW



WARNING

Foreign objects, such as rocks, broken glass, nails, wire, or string, can be picked up and thrown by the snow thrower, causing serious personal injury.

Remove all foreign objects from the area to be plowed before operating the snow thrower.

- Keep the area of operation free of foreign objects that can be become thrown by the rotor blades.
- Perform a thorough inspection of the area since some objects may be hidden from view by surrounding snow. If the snow thrower hits an obstruction or picks up a foreign object during use, stop the snow thrower, disconnect the extension cord, remove the obstruction, and inspect the unit for damage. Repair or replace any damaged parts before restarting and operating the unit.
- Keep children, pets, and bystanders away from the area of operation. Be aware that the normal noise of the machine when turned on may make it difficult for you to hear approaching people.
- When moving the snow thrower, use the wheels on the sides as the pivot point. Slightly tilt the snow thrower on this pivot point to move it forward or backward.
- Start your clearing path near the electrical outlet and work outward, throwing snow in a back and forth motion. To clear in the opposite direction, stop over the cord and pivot the snow thrower on its wheels. Make sure to overlap clearing paths.
- Note wind direction. If possible, move in the same direction as the wind so that the snow is not thrown against the wind (and thus back into your face and back onto the patch).
- While moving the snow thrower, do not drag the power cable violently or roughly. The snow thrower should move within the range that the cable can reach.
- Do not push the snow thrower with excessive force. You should push machine gently and evenly in accordance with the units throw rate.
- Some parts of the snow thrower may freeze under extreme temperature conditions. Do not attempt to operate the snow thrower with frozen parts. If the parts freeze while the snow thrower is in use, stop the snow thrower, unplug the extension cord, and inspect for frozen parts. Free all parts before operating the snow thrower. Never force controls that have frozen.
- Working on pebbles, gravel, or unpaved surfaces-To avoid throwing loose surface material along with the snow, push down on the raise the scrapper at the base of the unit above the pebbles or gravel.

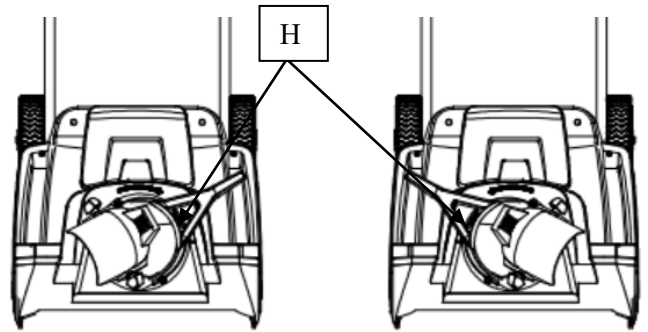
CHANGING THROW DIRECTION AND THROW HEIGHT

WARNING

Never direct the snow discharge chute at the operator, at bystanders, at vehicles or at nearby windows. Discharge snow and foreign objects accidentally picked up by the snow thrower can cause serious damage and personal injury.

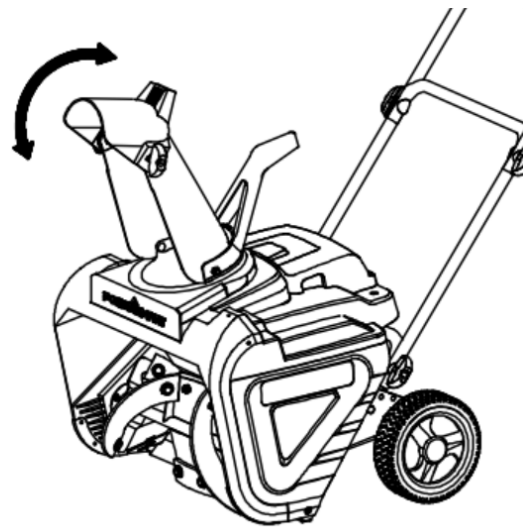
Always orient the discharge chute in the opposite direction from where you, bystanders, surrounding vehicles, or windows are located.

1. The discharge chute (H) can be adjusted 180 degrees by rotating the chute crank. Rotate the chute control crank clockwise to move the discharge chute (H) to the left, counterclockwise to move the chute to the right.



2. The chute deflector on the top of the discharge chute (H) controls the height of the snow stream. Loosen both chute deflector knobs to raise or lower the deflector to the desired height you wish to throw the snow. Tighten the knobs to secure the deflector.

Note: Do not over tighten the chute deflector knobs.

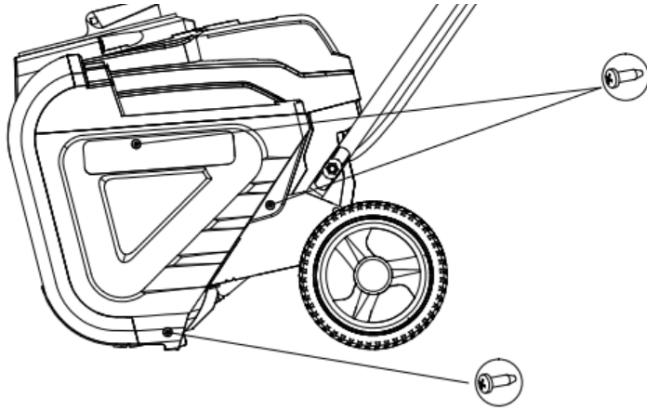


DRIVE BELT REPLACEMENT

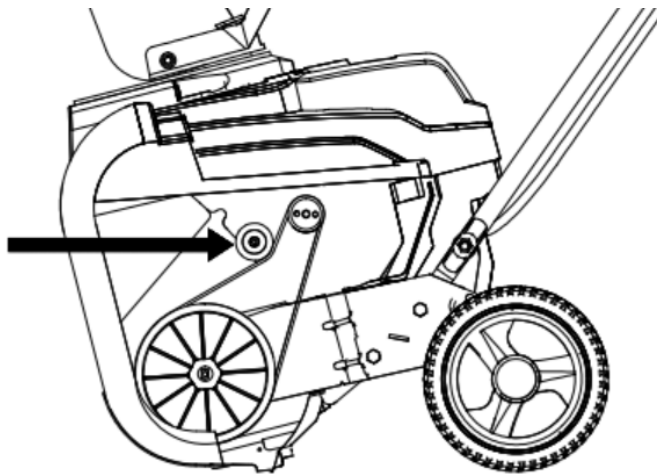
WARNING Entanglement Hazard - Before performing any service procedures, make sure the snow thrower is disconnected from the power source.

Note: Record component position before disassembly, to assist in reassembly.

1. Using screw driver, remove 3 screws attaching belt cover to housing.



2. Manually push the belt tension pulley up to reduce belt tension.



Note: When replacing the belt it is important to determine the cause of the failure (if applicable) and take corrective action to avoid repeated failure.

3. Inspect the old belt, pulleys and tension spring before installing a new belt for damage and wear, replace parts as required
4. Inspect the new belt to ensure it is the correct size and type.
Original – Part Number:5PJ720
5. Manually push the belt tension pulley up to allow installation of the new belt.
6. Position the belt onto the small drive pulley, then while holding the belt tension pulley away from the belt, carefully wind the belt onto the large pulley. Do not damage the new belt during installation.
7. Using screwdriver, install 3 screws attaching belt cover to housing.

TROUBLESHOOTING

Problem	Possible Causes	Remedy
WARNING - Before attempting to make any inspections, repairs or adjustments, stop the snow thrower, wait for all moving parts to stop moving and carefully disconnect the AC extension cord from the power source.		
No start condition, won't not turn on	No power from AC power source	Connect to known good AC power source
	Extension cord not connected	Securely connect extension cord at power source and snow thrower
	Extension cord faulty	Connect a known good extension cord
	Improper starting procedure	Review "Powering ON and OFF" procedure in this manual
	Auger damaged or blocked	Check auger for damage, blockage or frozen condition, repair as required
	Faulty switch, wiring or motor	Call customer service or contact service center
Turns on, but won't blow snow	Auger damaged or blocked	Check auger for damage, blockage or frozen condition, repair as required
	Chute blocked or damaged	Check chute for damage or blockage, repair as required
	Drive belt damaged or loose	Check drive belt condition, repair as required (drive belt is located on left side behind cover)
Turns on, but won't run at full speed	Extension cord faulty	Connect a known good extension cord
	Improper extension cord	Check extension cord length and gauge for use in proper application, Review "Extension Cord Chart" in this manual
	Auger damaged or blocked	Check auger for damage, blockage or frozen condition, repair as required
	Drive belt damaged or loose	Check drive belt condition, repair as required (drive belt is located on left side behind cover)
	Faulty wiring or motor	Call customer service or contact service center

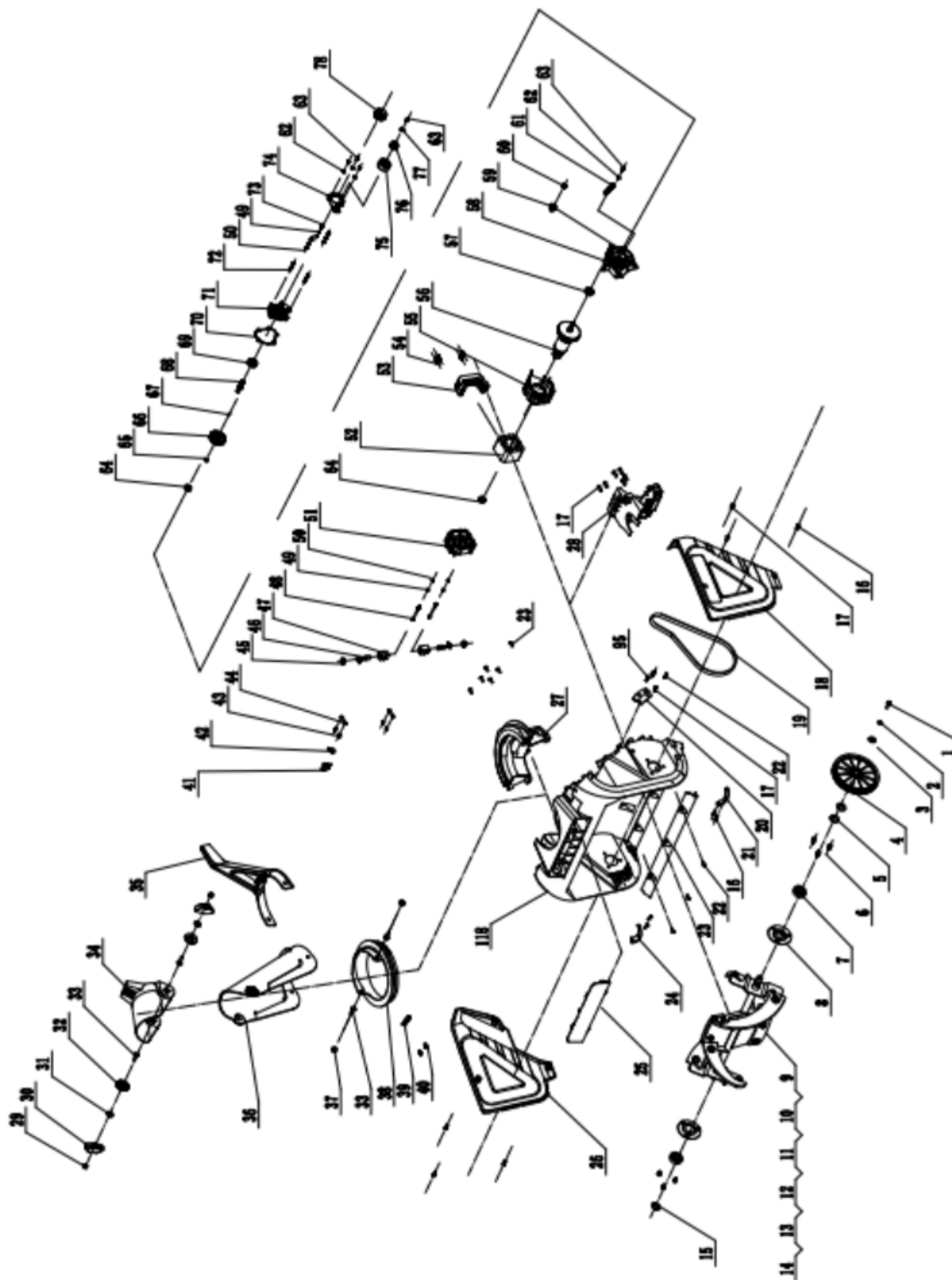
CARE AND MAINTENANCE

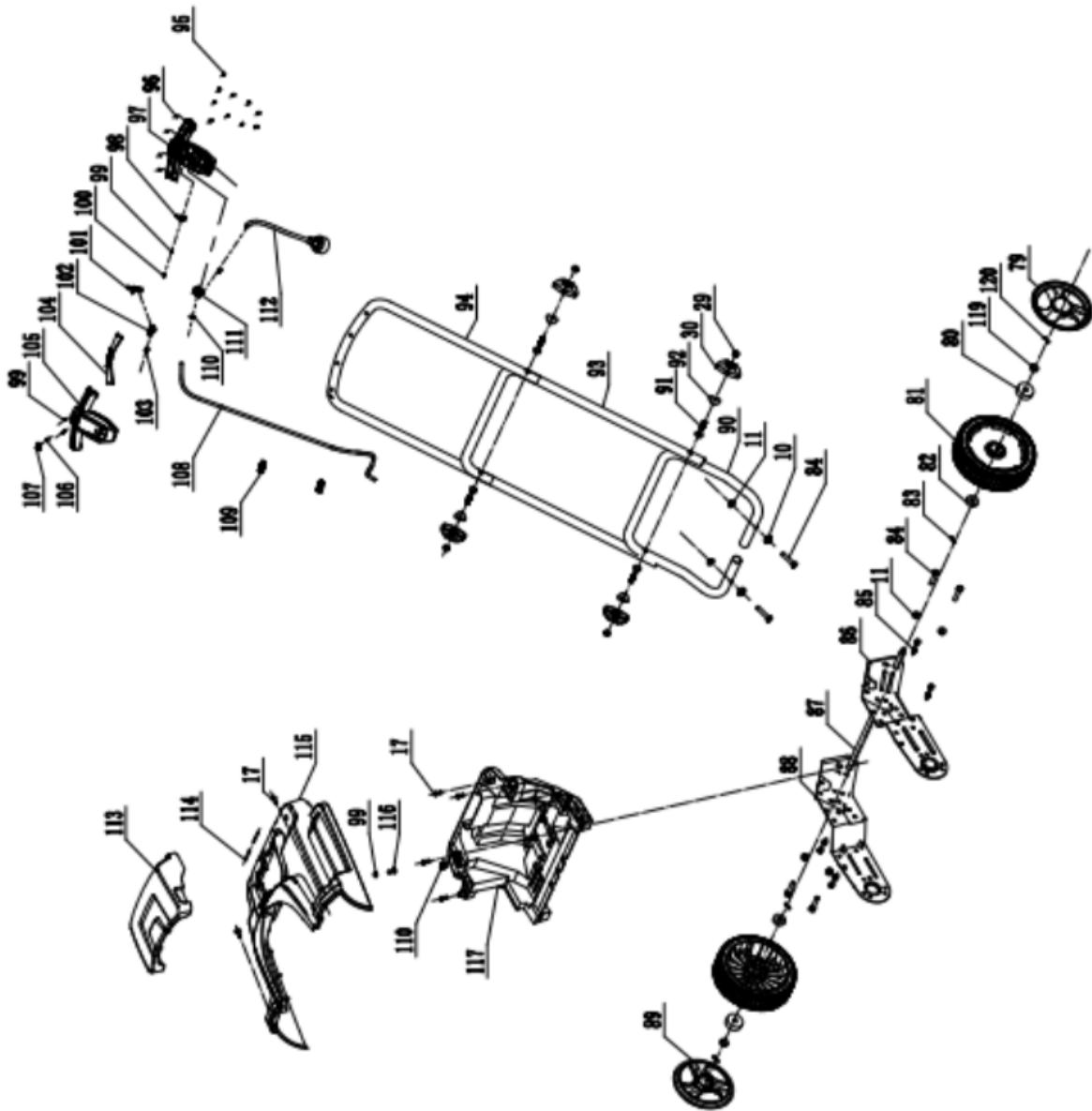
WARNING

Make sure to turn off the switch and disconnect the extension cord before performing any maintenance task on your snow thrower.

- Run the snow thrower for a few minutes to melt away any snow on the snow thrower. Turn the snow thrower's power off.
- Disconnect the extension cord from the snow thrower.
- Examine the extension cord thoroughly for signs of wear or damage. Replace it if it is worn or damaged.
- Examine the snow thrower thoroughly for worn, loose bolts or damaged parts. For repairing or replacing parts, contact customer service.
- Store the extension cord with the snow thrower.
- Store the unit in a locked and dry or high and dry place to prevent unauthorized use/damage and keep out of the reach of children. Store the instruction manual along with unit for future use.

EXPLODED VIEW AND PART LIST





Item	Stock #	Description	Qty
1	303020282	Hex Bolt M6x16	1
2	303041009	Spring Washer 6	1
3	303042009	Flat Washer	1
4	203060009A	Big Belt Wheel	1
5	303042069	Flat Washer	3
6	303020339	Hex Bolt M6x14	6
7	303100002	Deep Groove Ball Bearing	2
8	303070797	Bearing Plate Welded	2
9	303020106	Hex Bolt M8x20	12
10	303042013	Flat Washer	14
11	303030036	Nut M8	14
12	302110092	DB2801 Long Scraper	4
13	302110091	DB2801 Short Scraper	2
14	303181303	DB5021 Auger Shaft Welded	1
15	303050066	Shaft Ring 17	1
16	303010284	Screw ST4.8x12	6
17	303010176	Screw ST6.3x16	17
18	203050654	Left Side Cover	1
19	302040025	V-belt	1
20	203050588	Motor Support Plate	1
21	303070738	Left Corner	1
22	303010312	Screw ST4.8x16	11
23	303070741A	Shovel	1
24	303070739	Right Corner	1
25	203010747	LOGO Plate	1
26	203050655	Right Side Cover	1
27	203050171	Deck	1
28	203050567	Motor Bracket	1
29	303030066	Normal Hex Bolt M8	6
30	203020336A	Knob	6
31	303042023	Flat Washer	2
32	203020380	Pad	2

Item	Stock #	Description	Qty
61	303130019	Tensioning Wheel Spring	1
62	303042019	Flat Washer	4
63	303020077	Bolt M4x10	5
64	303100023	Deep Groove Ball Bearing	2
65	303050029	Shaft Ring	1
66	303160004	Big Gear	1
67	303110020	Woodruff Key	1
68	303160111	Output Shaft	1
69	303100024	Deep Groove Ball Bearing	1
70	303070029	Oil Pad	1
71	303090002	End Cover	1
72	303010221	Screw ST4x40	2
73	303020079	Bolt M4x14	3
74	303180588	Tension Wheel Bracket Welded	1
75	203020077	Tension Wheel	1
76	303100016	Deep Groove Ball Bearing 6000RS	1
77	303042035	Flat Washer	1
78	303060005	Small Pulley	1
79	203050658	Wheel Cover L	1
80	303100034	Deep Groove Ball Bearing 6203Z	2
81	203050544	8" Wheel	2
82	303100065	Wheel Bearing	2
83	303160845	Butterfly Pin	2
84	303020124	Hex Bolt M8x35	6
85	303010353	Screw ST6.3x16	8
86	303071479	Left Support Plate	1
87	303181283	Shaft	1
88	303071480	Right Support Plate	1
89	203021421	Wheel Cover R	1
90	303081214	Lower Tube	1
91	303020057	T-screw	4
92	303043010	Concave Pad	4

33	303020161	Square Neck Bolt M8x25	4	93	303081213	Middle Tube	1
34	203050174	Upper Chute	1	94	303081212	Upper Tube	1
35	203010648	Chute Handle	1	95	303010358	Screw ST4.2×14	10
36	203050175	Middle Chute	1	96	302070001	Oil Cap Seal Ring	4
37	303030077	Nut M8	2	97	203050660	Lower Switch Box	1
38	203050172	Rotating disc	1	98	303130013	Button Spring	1
39	203010647	Locating Piece	1	99	303042019	Flat Washer	1
40	303130138	Press Spring	2	100	303010313	Screw	3
41	301080009	Overcurrent Protector	1	101	203021102A	Switch Button	1
42	306010037	Screw Cap	1	102	203010655	Push Rod	1
43	303010203	Screw 3x10	4	103	303130124	Spring	1
44	303070074	Brush Holder	2	104	203021101A	Right Trigger	2
45	301110043	Brush Cover	2	105	203050552	Upper Switch Box	1
46	301110058	Electrical Carbon	2	106	303130125	Reverse Lock Button Spring	1
47	301110044	Brush Component	2	107	203010656	Reverse Lock Button	1
48	303010162	Screw ST4×70	2	108	301040078A	Cable (120V)	1
49	303041008	Spring Washer φ4	5	109	203020065	Clip	2
50	303042038	Flat Washer	5	110	203020047	Cable Clamp	3
51	203020050	Rear Motor Bracket	1	111	301100046	Switch	1
52	301030008	Stator	1	112	301040045	Power Cord	1
53	203050587	Motor Holder	1	113	203050662	Battery Pack Cover	1
54	303010355	Screw ST6.3×20	4	114	303100086	Shaft	2
55	203020063	Front Motor Bracket	1	115	203050656	Upper Cover	1
56	301030005A	Rotor	1	116	303010363	Screw	1
57	303100030	Deep Groove Ball Bearing	1	117	203050657	Lower Cover	1
58	303090005	Middle Cover	1	118	203050170A	Deck	1
59	203060019	Gear	1	119	303160887	Spacer	2
60	303030047	Nut M8	1	120	303121002	Cotter Pin	2

TWO (2) YEARS LIMITED WARRANTY

POWERSMART IS COMMITTED TO BUILDING TOOLS THAT ARE DEPENDABLE FOR YEARS. OUR WARRANTIES ARE CONSISTENT WITH OUR COMMITMENT AND DEDICATION TO QUALITY.

TWO (2) YEARS LIMITED WARRANTY OF POWER SMART PRODUCTS FOR HOME USE.

POWERSMART ("SELLER") WARRANTS TO THE ORIGINAL PURCHASER ONLY, THAT ALL POWERSMART CONSUMER POWER TOOLS WILL BE FREE FROM DEFECTS IN MATERIAL OR WORKMANSHIP FOR A PERIOD OF TWO (2) YEARS FROM DATE OF PURCHASE. NINETY (90) DAYS FOR ALL POWERSMART PRODUCTS, IF THE TOOL IS USED FOR PROFESSIONAL OR COMMERCIAL USE.

SELLER'S SOLE OBLIGATION AND YOUR EXCLUSIVE REMEDY UNDER THIS TWO (2) YEARS LIMITED WARRANTY AND, TO THE EXTENT PERMITTED BY LAW, ANY WARRANTY OR CONDITION IMPLIED BY LAW, SHALL BE THE REPAIR OR REPLACEMENT OF PARTS, WITHOUT CHARGE, WHICH ARE DEFECTIVE IN MATERIAL OR WORKMANSHIP AND WHICH HAVE NOT BEEN MISUSED, CARELESSLY HANDLED, OR MISREPAIRED BY PERSONS OTHER THAN SELLER OR AUTHORIZED SERVICE CENTER. TO MAKE A CLAIM UNDER THIS LIMITED WARRANTY, YOU MUST RETURN THE ENTIRE POWER TOOL PRODUCT; TRANSPORTATION PREPAID, TO POWERSMART INCLUDE A LEGIBLE COPY OF THE ORIGINAL RECEIPT, WHICH LISTS THE DATE OF PURCHASE (MONTH AND YEAR) AND THE NAME OF THE COMPANY PURCHASED FROM.

THIS LIMITED WARRANTY DOES NOT APPLY TO ANY ACCESSORY ITEMS INCLUDED WITH THE TOOL SUCH AS CIRCULAR SAW BLADES OTHER RELATED ITEMS OR TO ANY REPLACEMENT PARTS LISTED UNDER MAINTENANCE.

ANY IMPLIED WARRANTIES SHALL BE LIMITED IN DURATION TO TWO (2) YEARS FROM DATE OF PURCHASE. SOME STATES IN THE U.S. AND SOME CANADIAN PROVINCES DO NOT ALLOW LIMITATIONS ON HOW LONG AN IMPLIED WARRANTY LASTS, SO THE ABOVE LIMITATION MAY NOT APPLY TO YOU.

IN NO EVENT SHALL SELLER BE LIABLE FOR ANY INCIDENTAL OR CONSEQUENTIAL DAMAGES (INCLUDING BUT NOT LIMITED TO LIABILITY FOR LOSS OF PROFITS) ARISING FROM THE SALE OR USE OF THIS PRODUCT. SOME STATES IN THE U.S. AND SOME CANADIAN PROVINCES DO NOT ALLOW THE EXCLUSION OR LIMITATION OF INCIDENTAL OR CONSEQUENTIAL DAMAGES, SO THE ABOVE LIMITATION OR EXCLUSION MAY NOT APPLY TO YOU.

THIS LIMITED WARRANTY GIVES YOU SPECIFIC LEGAL RIGHTS, AND YOU MAY ALSO HAVE OTHER RIGHTS WHICH VARY FROM STATE TO STATE IN THE U.S., PROVINCE TO PROVINCE IN CANADA AND FROM COUNTRY TO COUNTRY.

FOR QUESTIONS / COMMENTS, TECHNICAL ASSISTANCE OR REPAIR PARTS – PLEASE CALL TOLL FREE AT: 1-800-791-9458 (M-F 9AM – 5PM EST) EMAIL: SUPPORT@AMERISUNINC.COM

SAVE YOUR RECEIPTS. THIS WARRANTY IS VOID WITHOUT THEM.