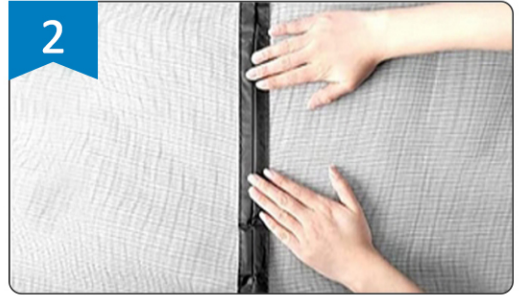


Screen Door Installation Steps



1
Clean the door frame and wait for few minutes until the frame dry completely



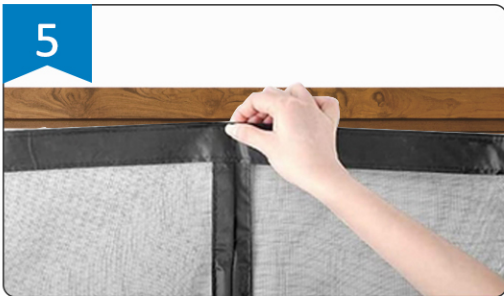
2
Place the mesh curtain on the floor with magnets aligned



3
Stick the velcro tape along the frame of the curtain



4
Peel off backing tape from the Velcro strip
Note: Before peel off, please measure the screen with your door to find the correct position



5
Stick the mesh to the door frame. Make sure the central part of the screen door should be slightly higher than the two sides



6
When you don't need to use the screen door, you can use straps to secure the door curtain