

EASY ASSEMBLY AND OPERATION INSTRUCTIONS
22SV22944 Colossal Spider



READ AND SAVE THESE INSTRUCTIONS FOR FUTURE REFERENCE

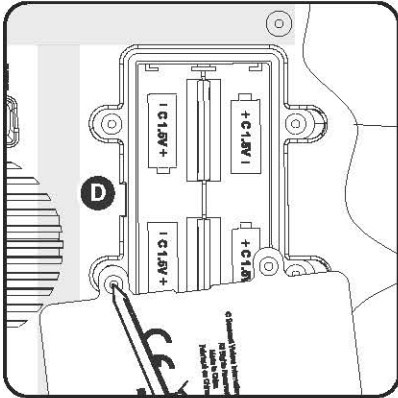
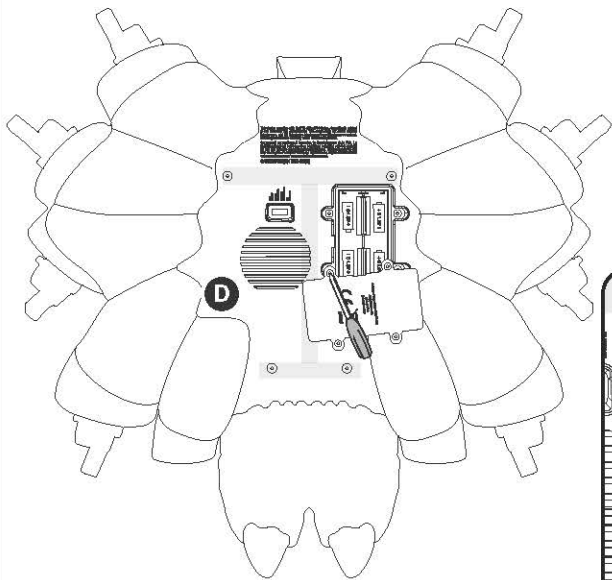
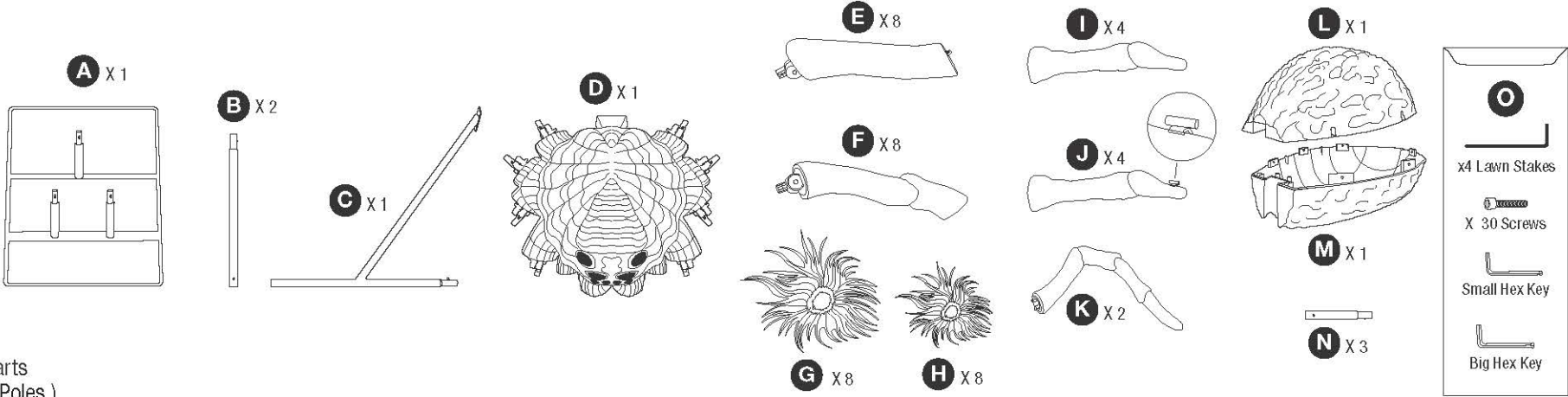
IF ANY PART IS MISSING OR BROKEN, DO NOT ATTEMPT TO ASSEMBLE THE PRODUCT AND CONTACT SVI CUSTOMER SERVICE FROM 8:30 AM TO 5:30 PM PST AT 1-855-428-3921, EMAIL CUSTOMERSERVICE@SVIUS.COM, OR CALL HOME ACCENTS HOLIDAY CUSTOMER SERVICE FROM MON-FRI 8:00 AM TO 7:00 PM AND SAT 9:00 AM TO 6:00 PM EST AT 1-855-HDHOLIDAY (1-855-434-6543).

IMPORTANT TIPS:

- Ensure that the switch on the function control box is on the desired setting.
 - Ensure that the floor or surface that the item sits on is flat and level.
 - Be sure nothing is blocking the sensor.
- If the item still does not work, contact SVI Customer Service from 8:30 am to 5:30 pm PST at 1-855-428-3921, email customerservice@svius.com, or call Home Accents Holiday Customer Service from Mon-Fri 8:00 am to 7:00 pm and Sat 9:00 am To 6:00 pm EST at 1-855-HDHOLIDAY (1-855-434-6543).

PARTS LIST

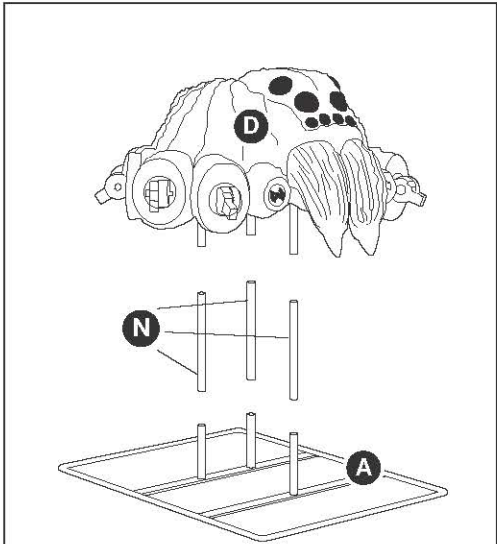
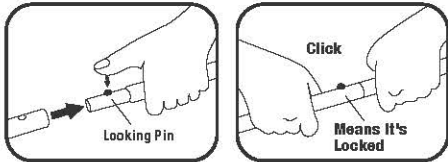
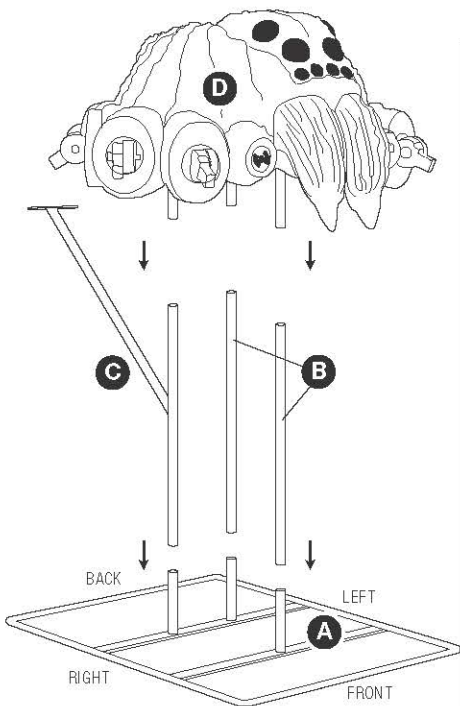
- A. Base x 1
- B. Poles x 2
- C. Support Pole x 1
- D. Head x1
- E. Upper Legs x 8
- F. Middle Legs x 8
- G. Large Fur Covers x 8
- H. Fur Covers x 8
- I. Lower Legs x 4
- J. Lower Legs with Stake Housings x 4
- K. Feeder Legs x2
- L. Upper Abdomen x1
- M. Lower Abdomen x1
- N. Short Poles x 3
- O. Polybag with Small Parts (Attached to the B. Poles)



NOTE: Install batteries into the battery box in the (D) Head and turn on to ensure item functions before assembling it.

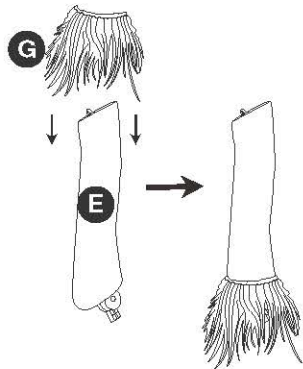
1.1

NOTE: Left and right are relative to the character.

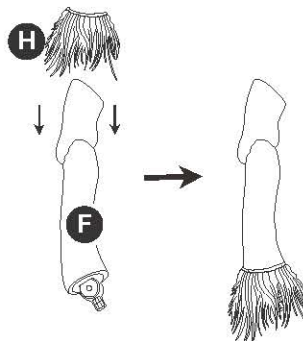


NOTE: The height of the spider can be adjusted by replacing the (B, C) Poles with the (N) Short Poles.

2.1

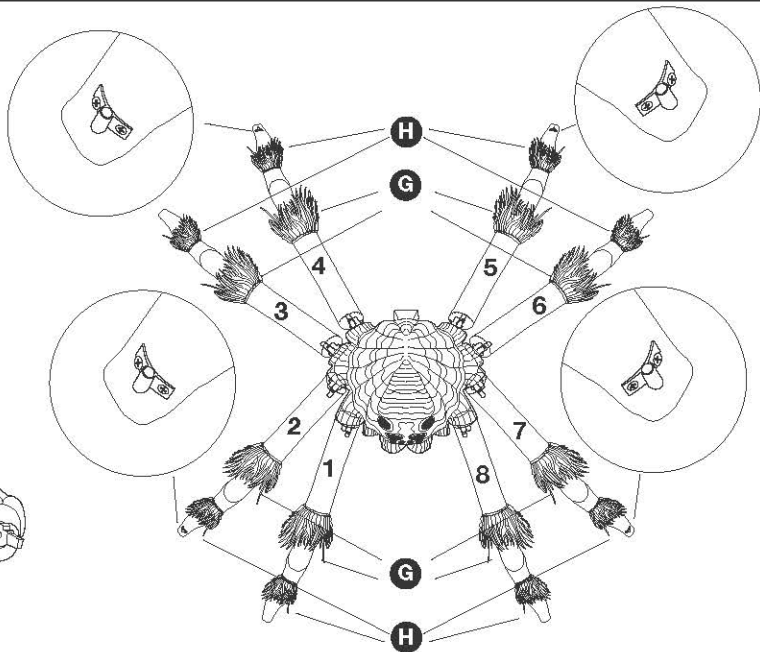
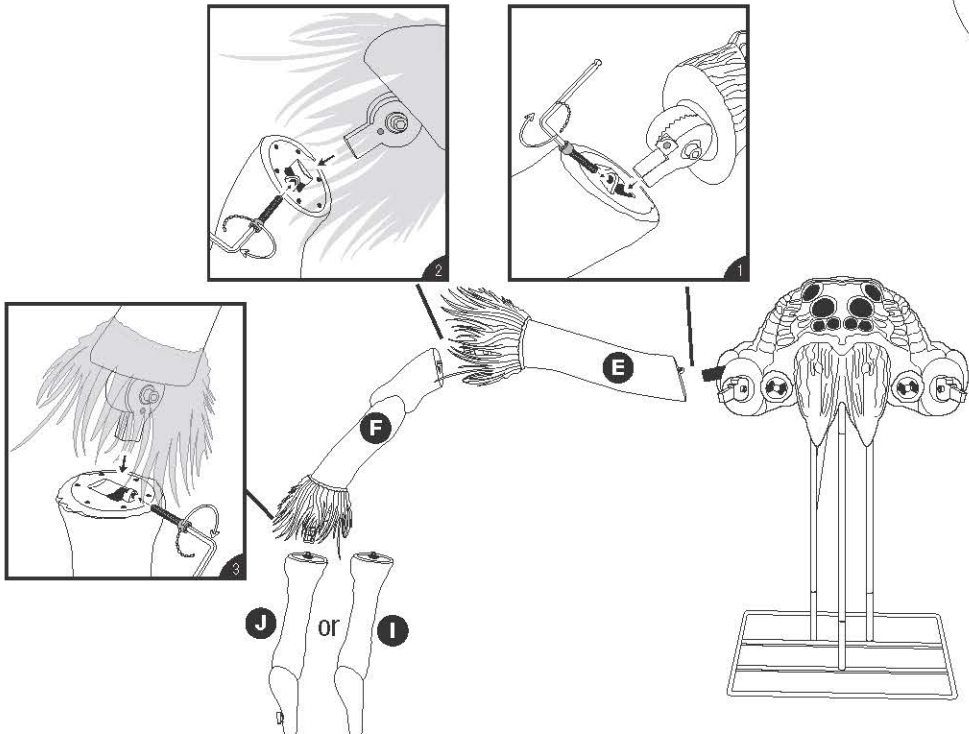


3.1

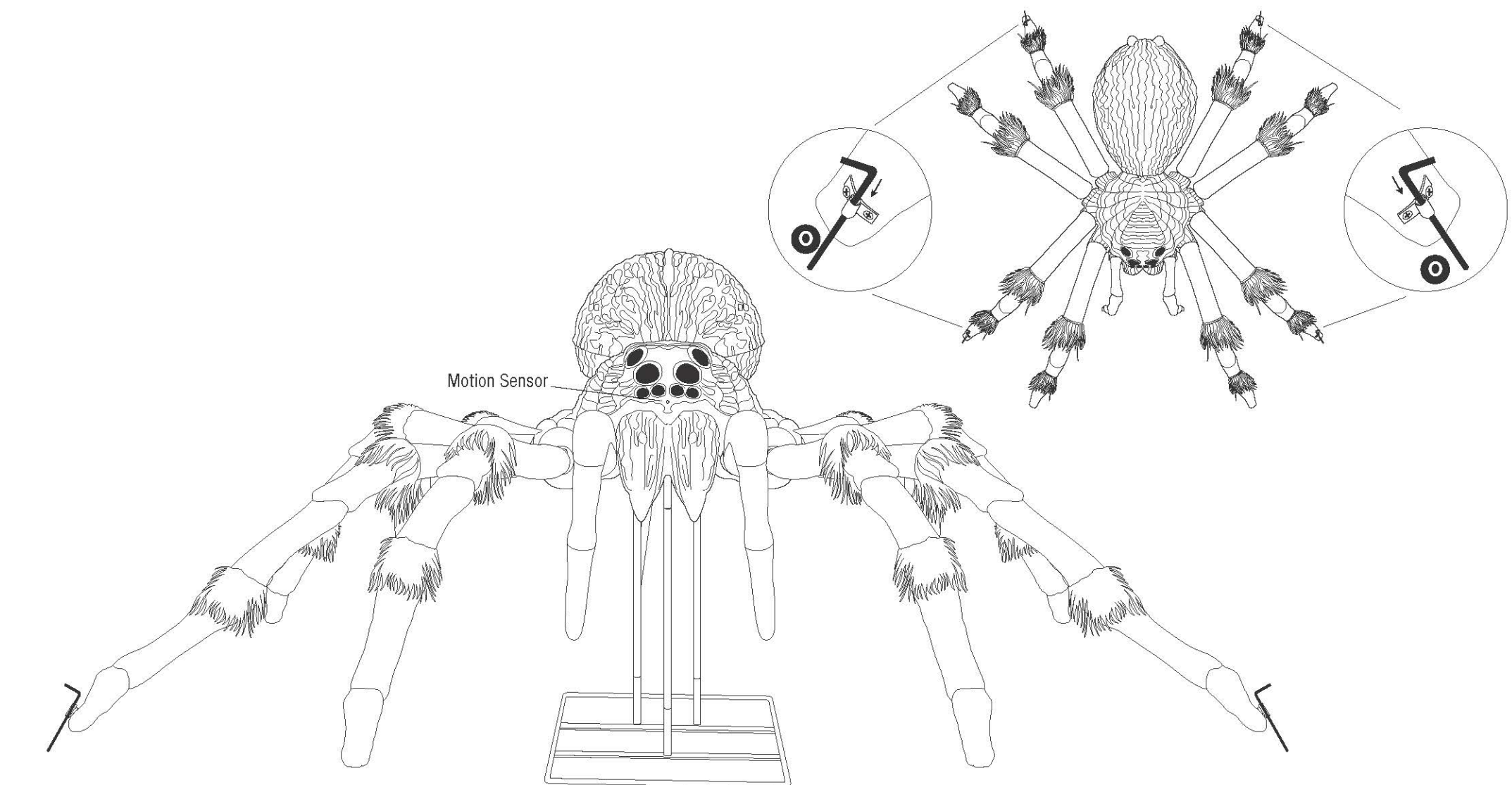
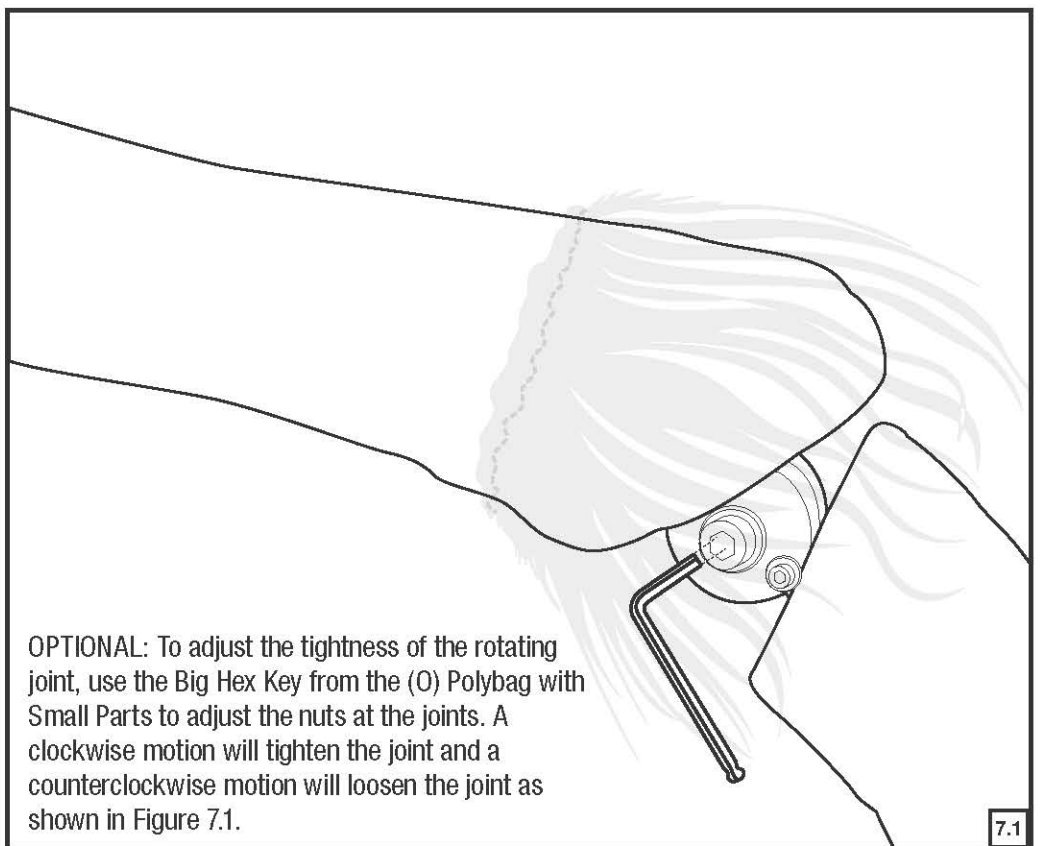
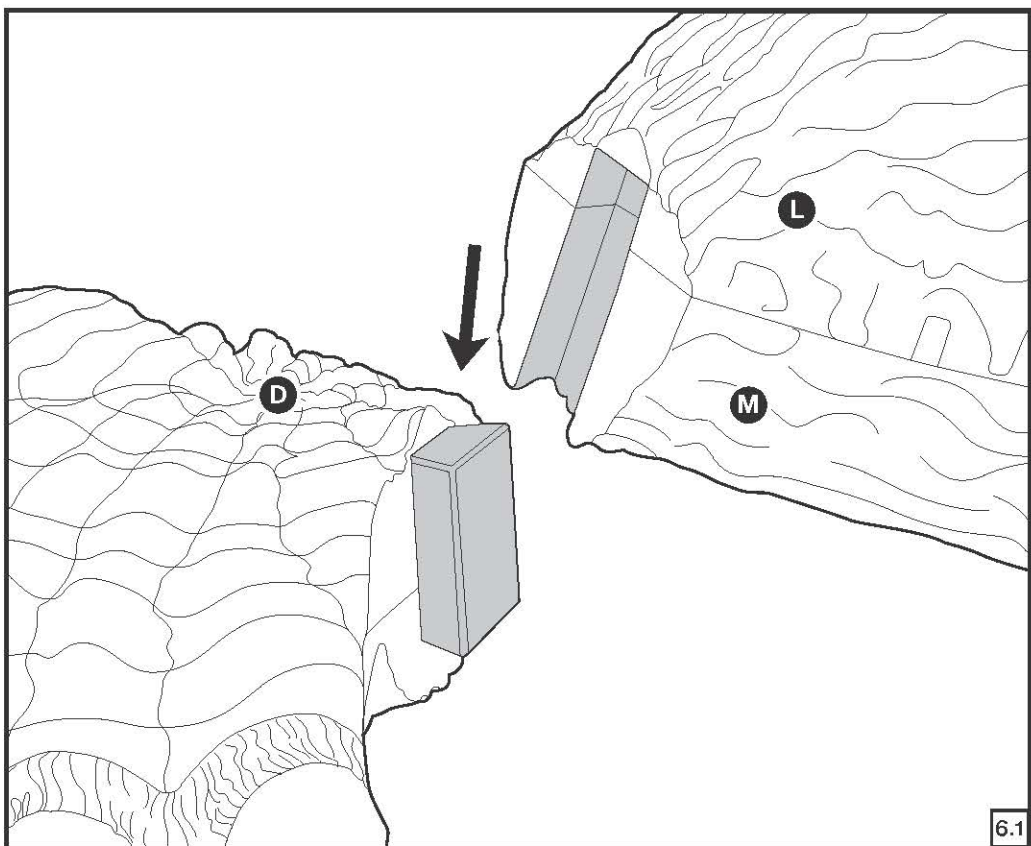
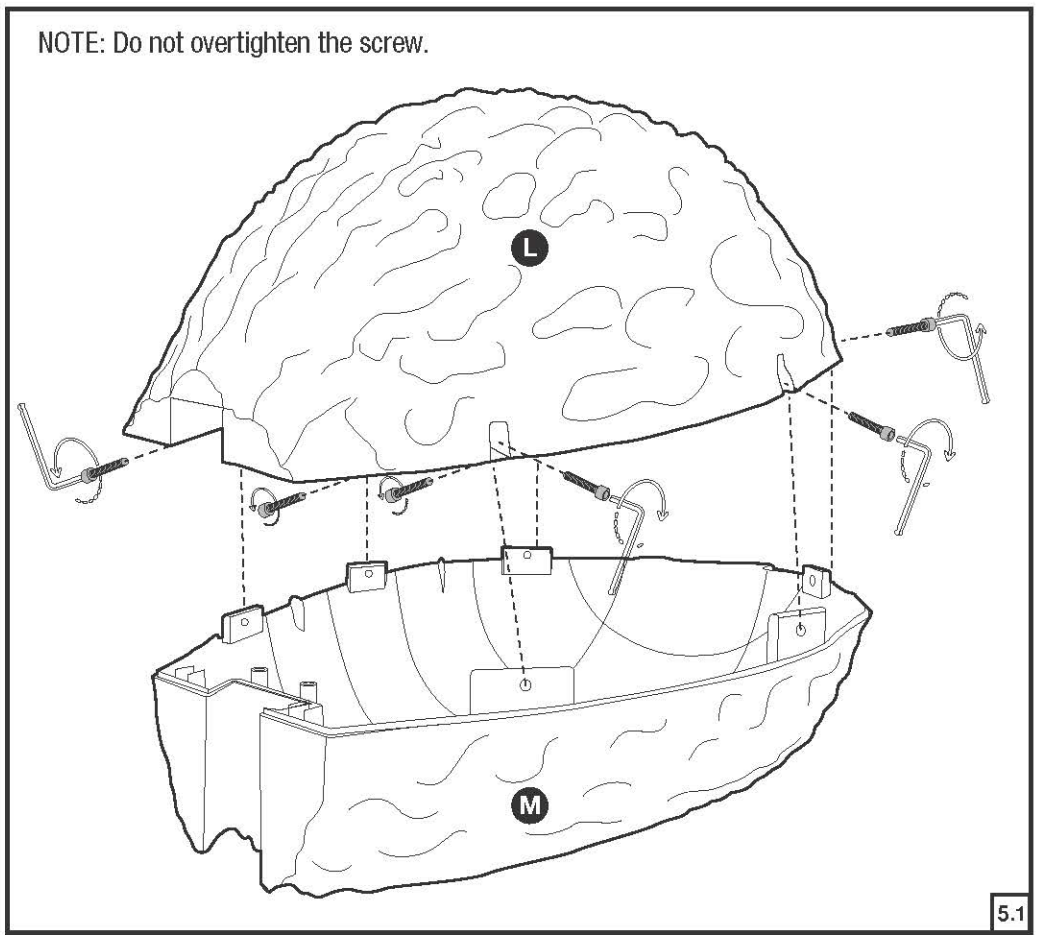
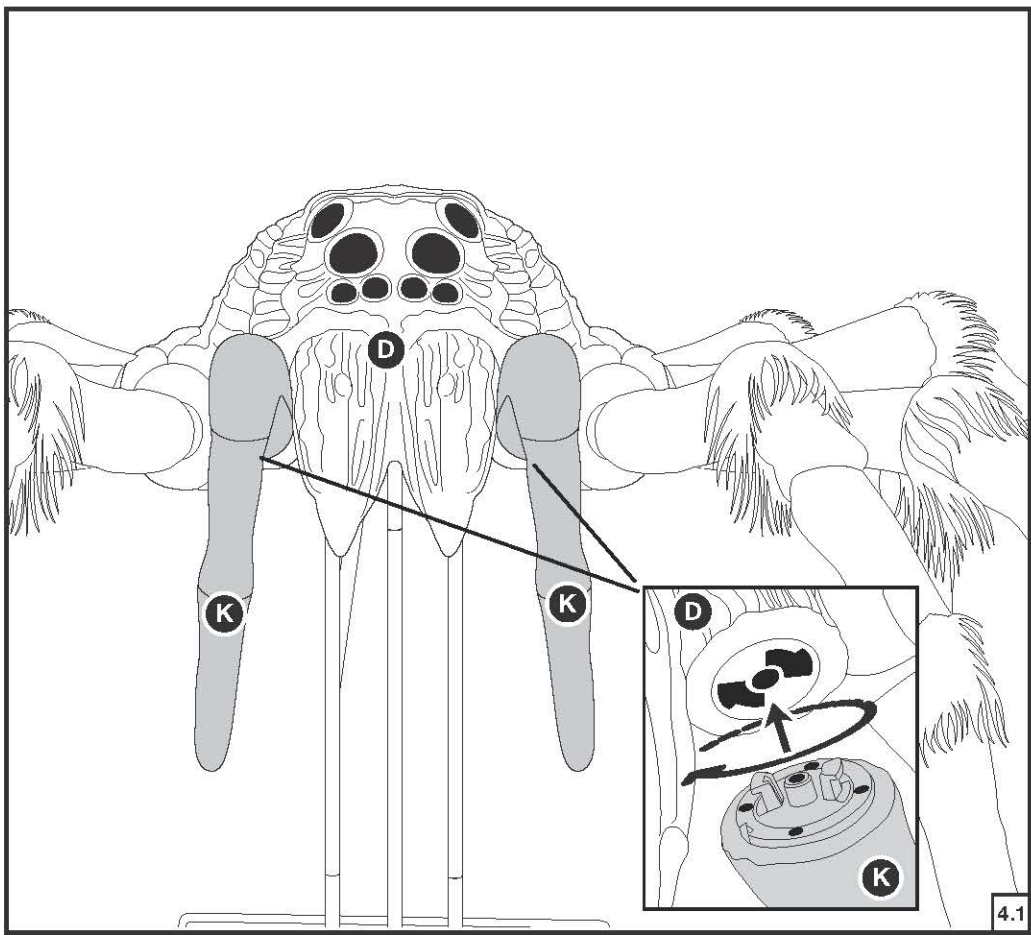


3.2

NOTE: Do not overtighten the screws. Make sure the legs with (J) Lower Legs with Stake Housings are in positions 2, 4, 5, and 7.



3.3



OPERATION INSTRUCTIONS

OFF ARRÊT	This mode will turn off lights and sound.
TIMER MINUTEUR	This mode will operate the same as ON mode within a 6HR On/18 HR Off period.
SENSOR DÉTECTEUR	This mode will activate lights and sound when the motion sensor is triggered and will operate for 1 audio-cycle with each activation. The motion sensor will be triggered if movement is detected up to 3.8m/12.5ft in front of the motion sensor.
ON MARCHE	This mode will continually operate the lights and sound of the item.

WARNING

This item is not a toy and should be used for decoration only. This item contains small parts that can be a choking hazard. Keep all plastic and wire parts away from children.

1. Please assemble item according to instructions.

2. Children should be supervised by adults. Item should not be grabbed, as it becomes a tipping hazard.

Please view all instructions carefully before assembling. Save this instruction sheet for future reference.

CARE AND STORAGE INSTRUCTIONS

When not in use, store this product in its original packing. Keep away from heat and moisture.

FOR INDOOR/OUTDOOR USE

BATTERY REPLACEMENT INSTRUCTIONS

Requires 4 x 1.5V C batteries (Not Included)

* You will need a small screwdriver (Not Included).

Locate the battery compartment on the product. Remove the battery compartment cover by using a small Phillips head screwdriver to unscrew the screw. After removing or installing the batteries, place the battery compartment cover into position, and secure the battery cover. DO NOT overtighten screws.

Do not mix alkaline, standard (carbon-zinc), or rechargeable (nickel cadmium) batteries. Do not mix old and new batteries. Rechargeable batteries to be removed from the product before being charged. Only batteries of the same or equivalent type as recommended are to be used. Rechargeable batteries are only to be charged under adult supervision. Non-rechargeable batteries are not to be recharged. Batteries are to be inserted with the correct polarity. Remove batteries if consumed or if product is to be left unused for a long time. The supply terminals are not to be short-circuited. Dispose of batteries safely. DO NOT DISPOSE OF BATTERIES IN FIRE, BATTERIES MAY EXPLODE OR LEAK

This device complies with Part 15 of the FCC Rules. Operation is subject to the following two conditions: (1) This device may not cause harmful interference, and (2) this device must accept any interference received, including interference that may cause undesired operation.

CAUTION: Changes or modifications not expressly approved by the party responsible for compliance could void the user's authority to operate the equipment.

NOTE: This equipment has been tested and found to comply with the limits for a Class B digital device, pursuant to Part 15 of the FCC Rules. These limits are designed to provide reasonable protection against harmful interference in a residential installation. This equipment generates, uses, and can radiate radio frequency energy and, if not installed and used in accordance with the instructions, may cause harmful interference to radio communications. However, there is no guarantee that interference will not occur in a particular installation. If this equipment does cause harmful interference to radio or television reception, which can be determined by turning the equipment off and on, the user is encouraged to try to correct the interference by one or more of the following measures: Reorient or relocate the receiving antenna, Increase the separation between the equipment and receiver. Connect the equipment into an outlet on a circuit different from that to which the receiver is connected. Consult the dealer or experienced radio/TV technician for help.

CAN ICES-003(B)/NMB-003(B)

