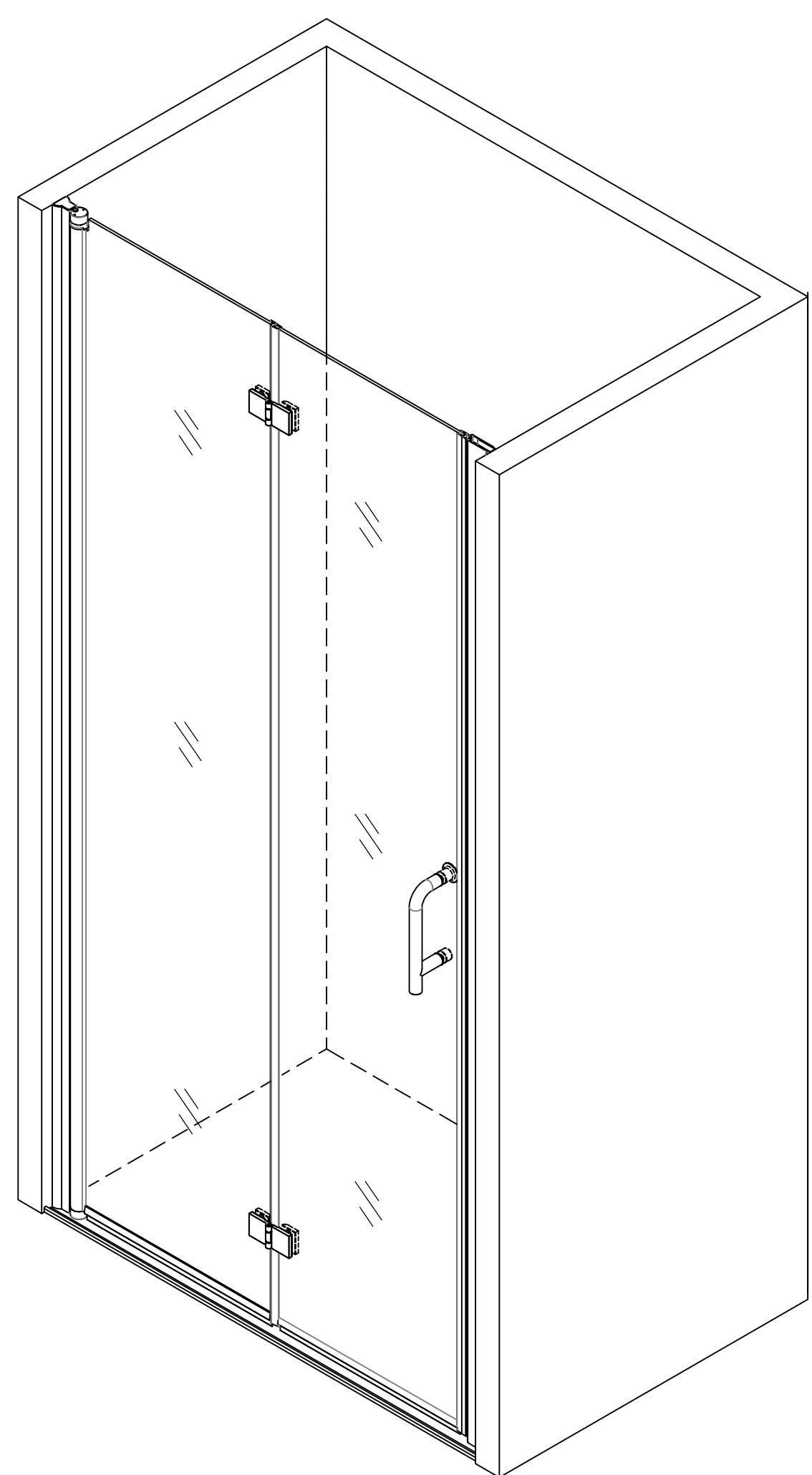
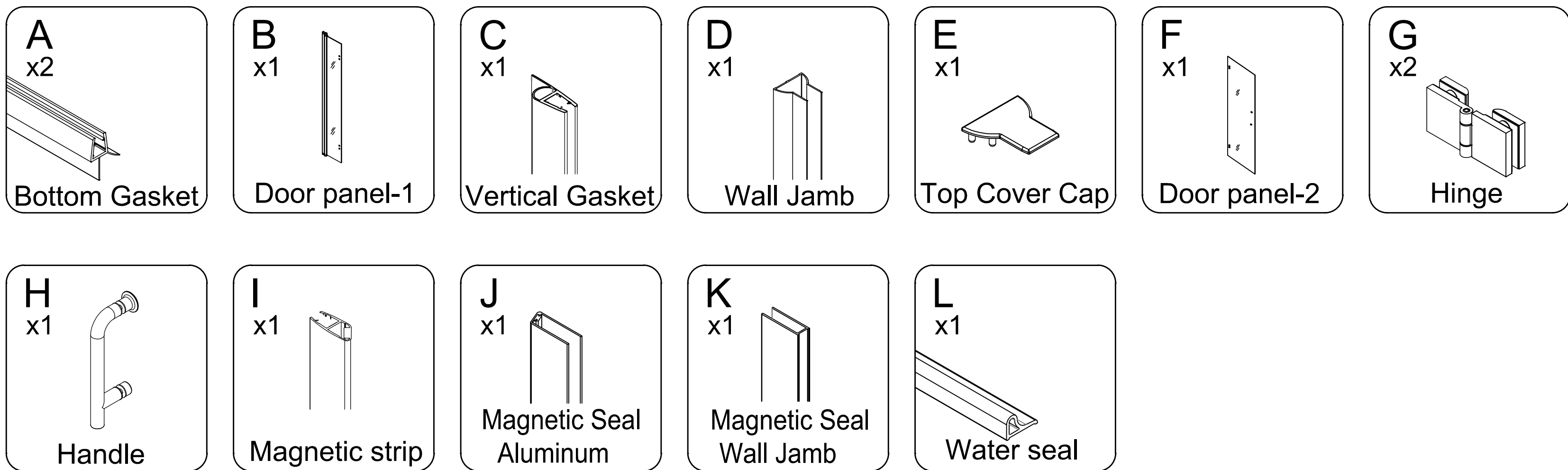


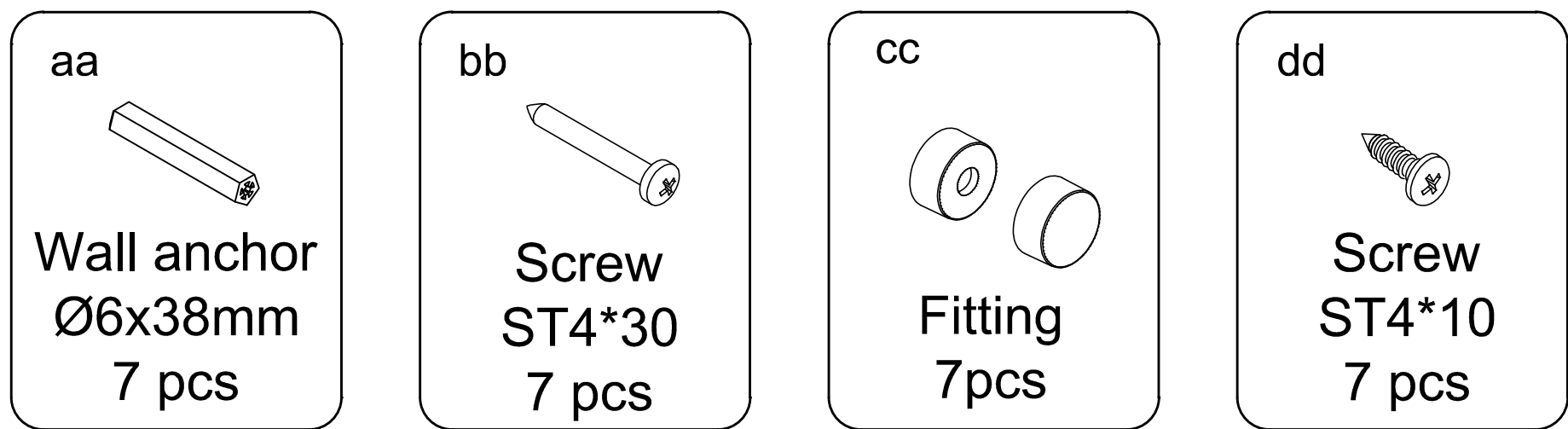
Shower Door Installation Guide



PACKAGE CONTENT

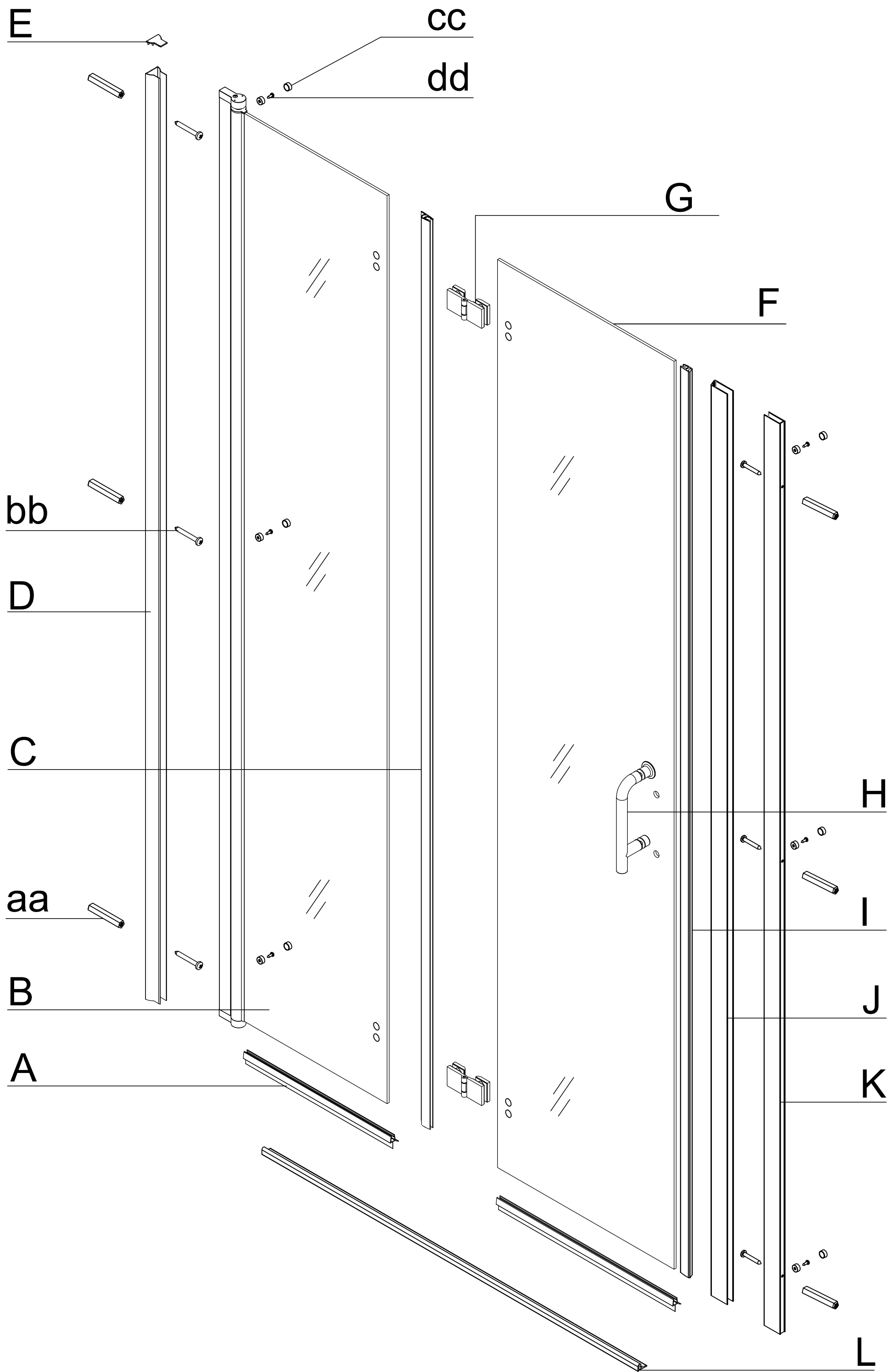
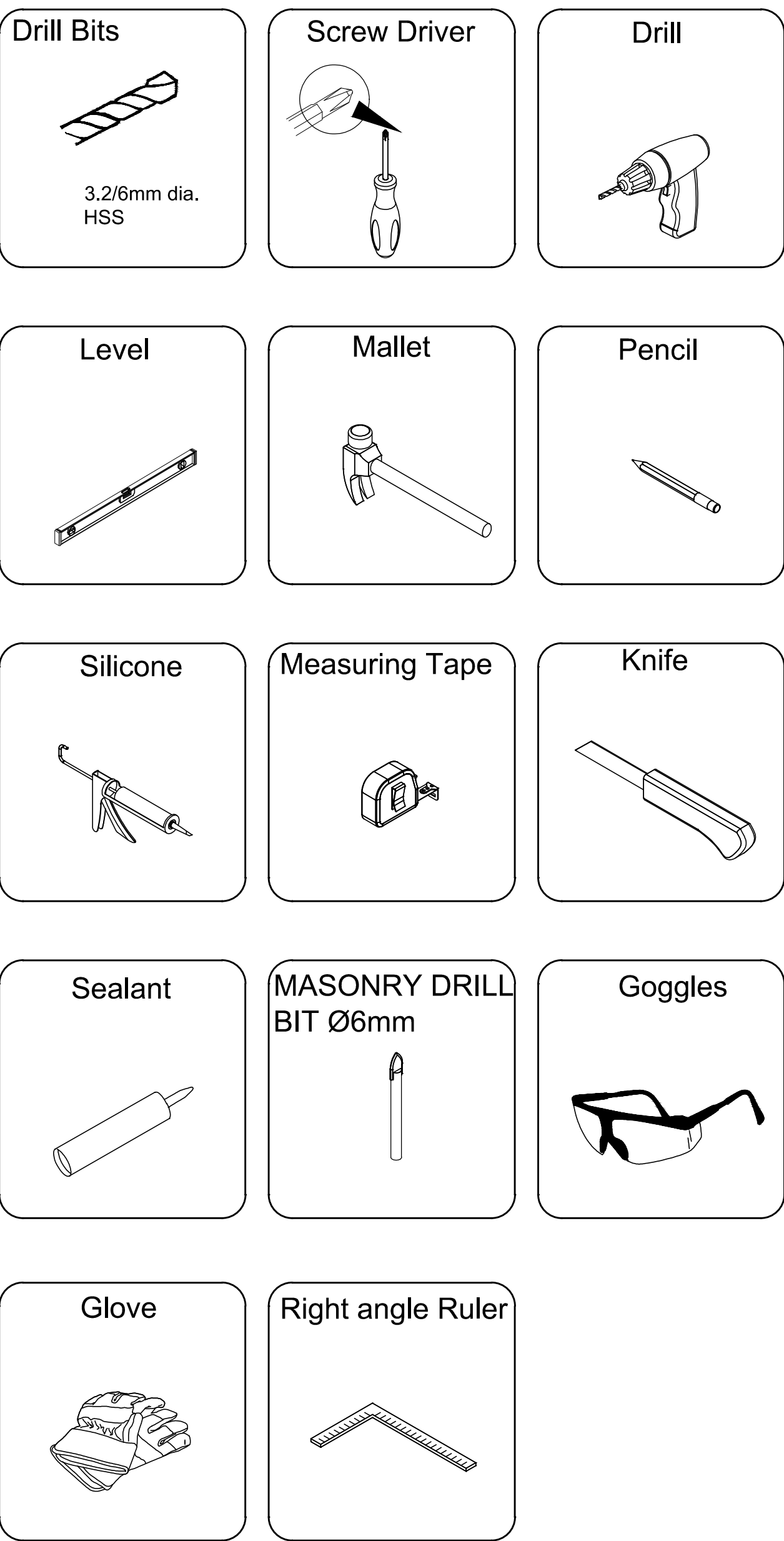


HARDWARE CONTENT



★ One piece for each as spare part !

Required Tools



SAFETY INFORMATION

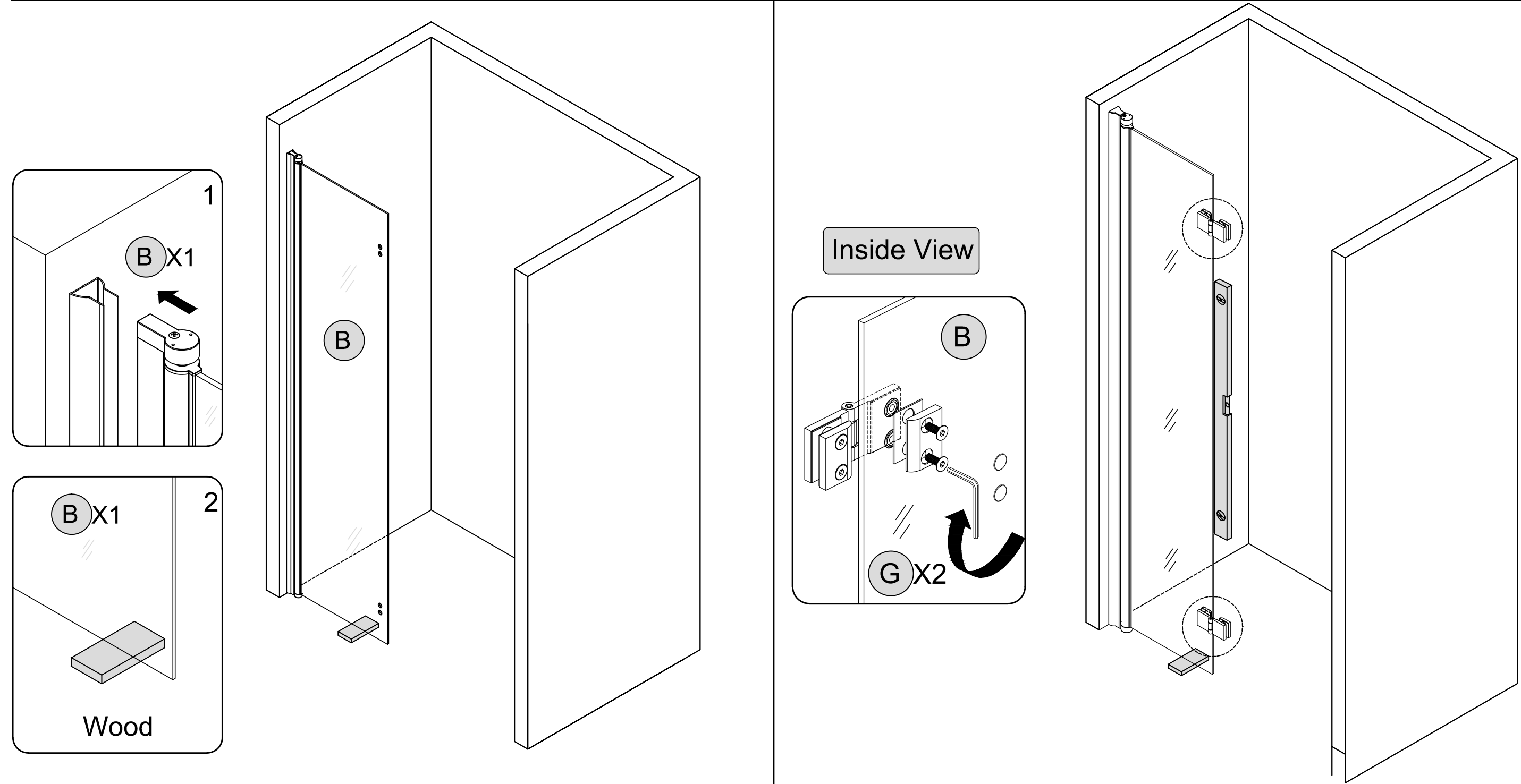
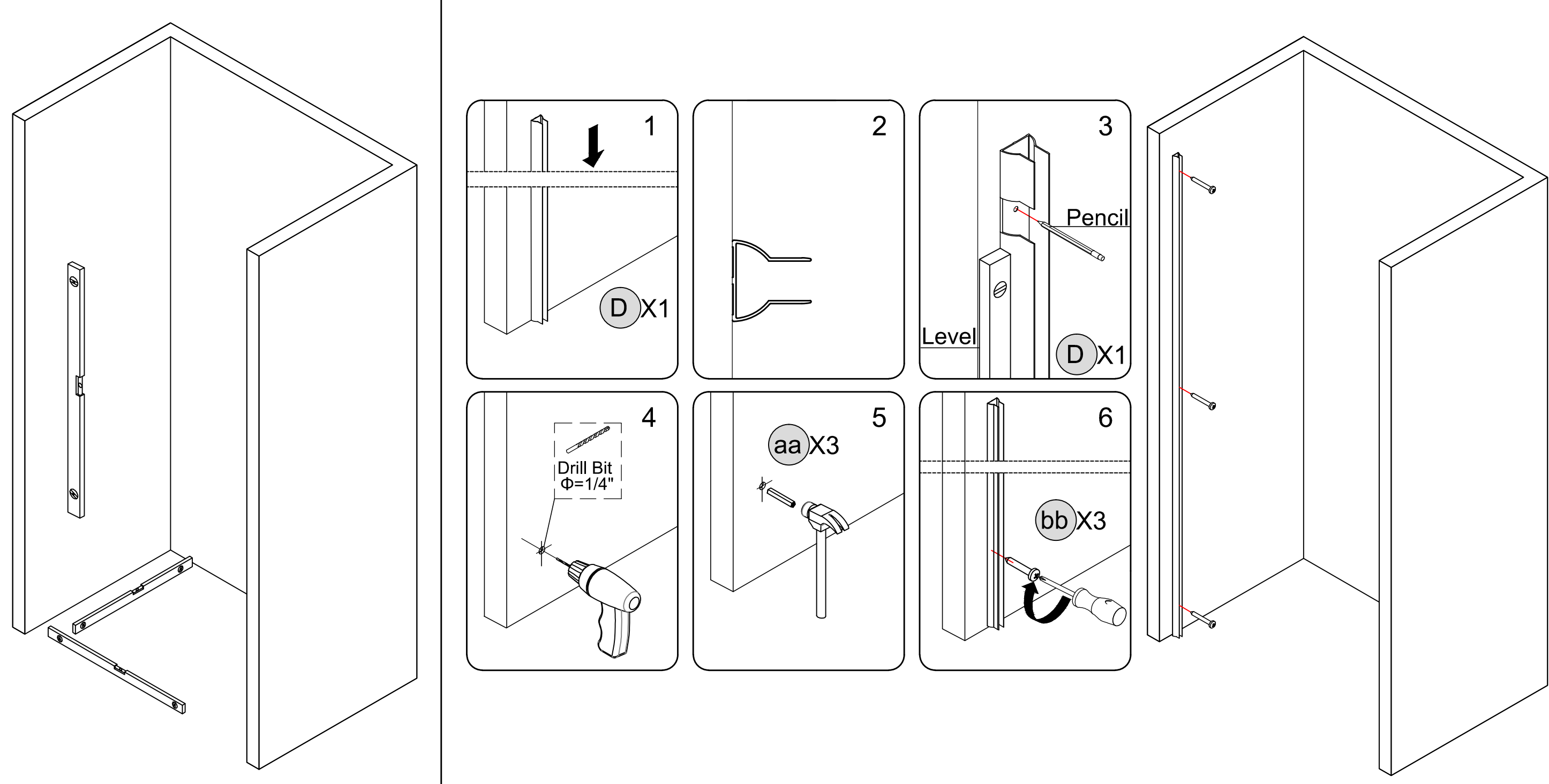
CAUTION

Please carefully read the following important safety information before handling or installing this shower. There is a risk of serious injury while handling this product. To minimize these risks, please note:

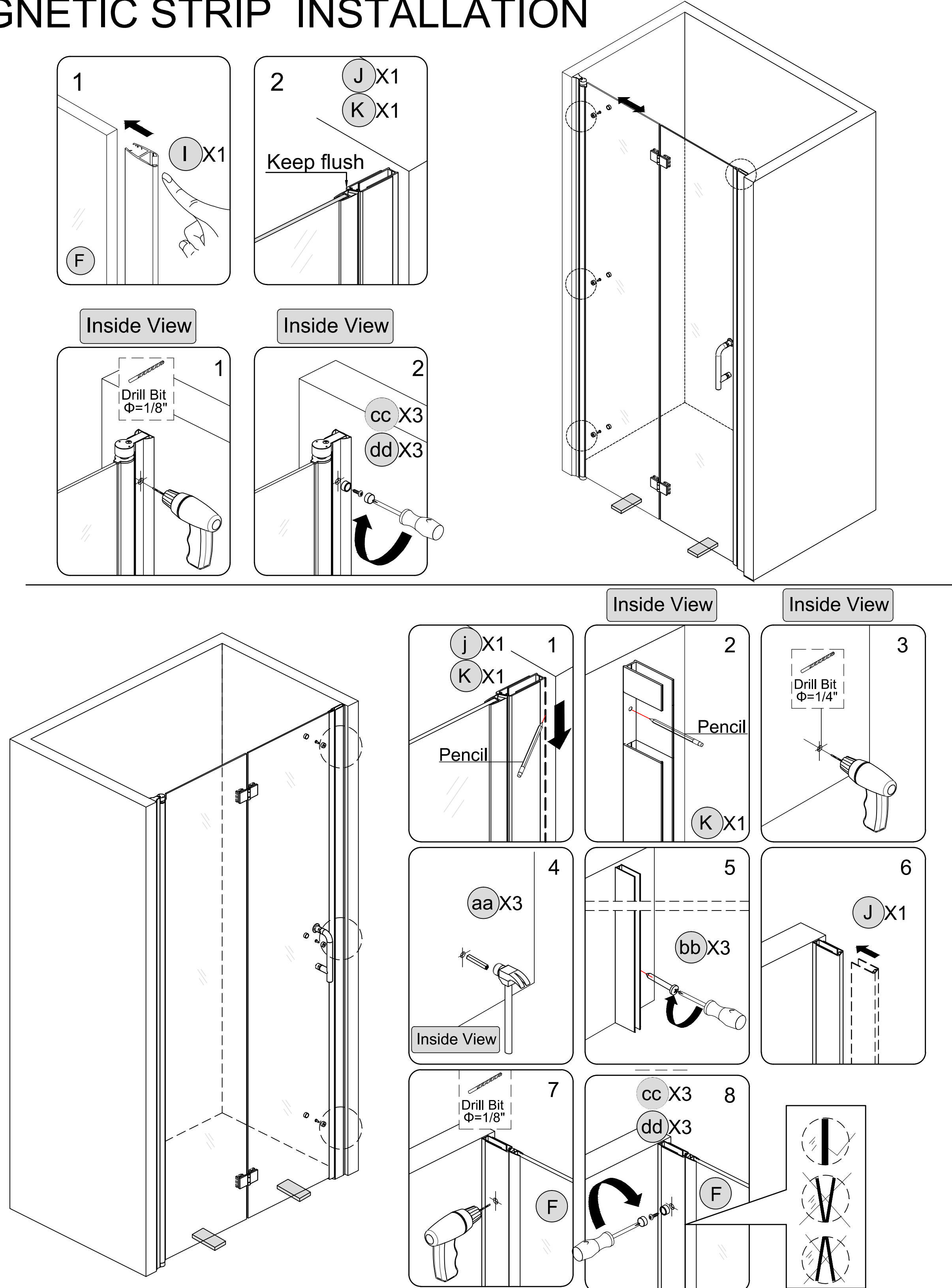
- Always wear safety glasses and gloves while handling.
- Always read and follow all the steps in the installation instructions.
- Inspect all contents and glass for damage before installation.
- Extreme caution should be taken while handling the glass during installation as the tempered glass may shatter if in contact with a hard surface.
- Handle the tempered glass with caution! Improperly handling the glass can cause it to break suddenly in small pieces (never in pointed fragments).
- Always take all precautions not to touch the tempered glass with any tools during the installation, or after installed.
- Do not cut or modify the tempered glass as it will shatter if cut.
- Carefully remove product from packaging and keep packaging until installation is complete.
- Inspect all parts for damage; if there is damage to the unit prior to installation, please contact customer service at the number provided in this guide.
- Install the shower on a floor that is level and able to accommodate the weight of the unit and an occupant.
- Consult local building codes and compliance standards prior to installation and ensure conformity.
- After installation, and from time to time, check the glass for fit and finish to ensure that nothing has come loose since installation.
- Keep this installation manual for future reference.

NOTE: Heavy product ! You will need at least two people to install this unit properly.

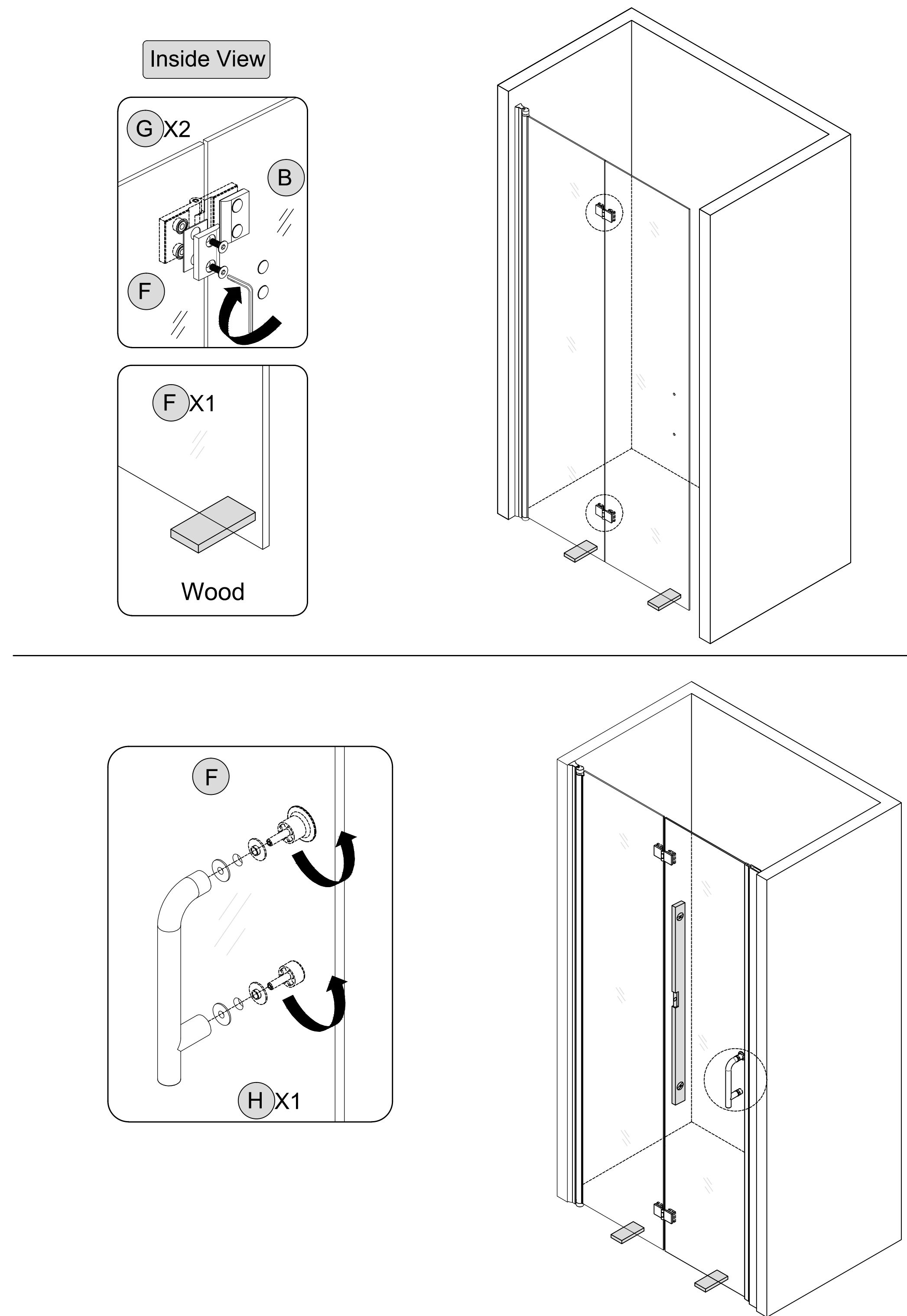
1.LEVEL & WALL JAMB & DOOR PANEL & HANDLE INSTALLATION



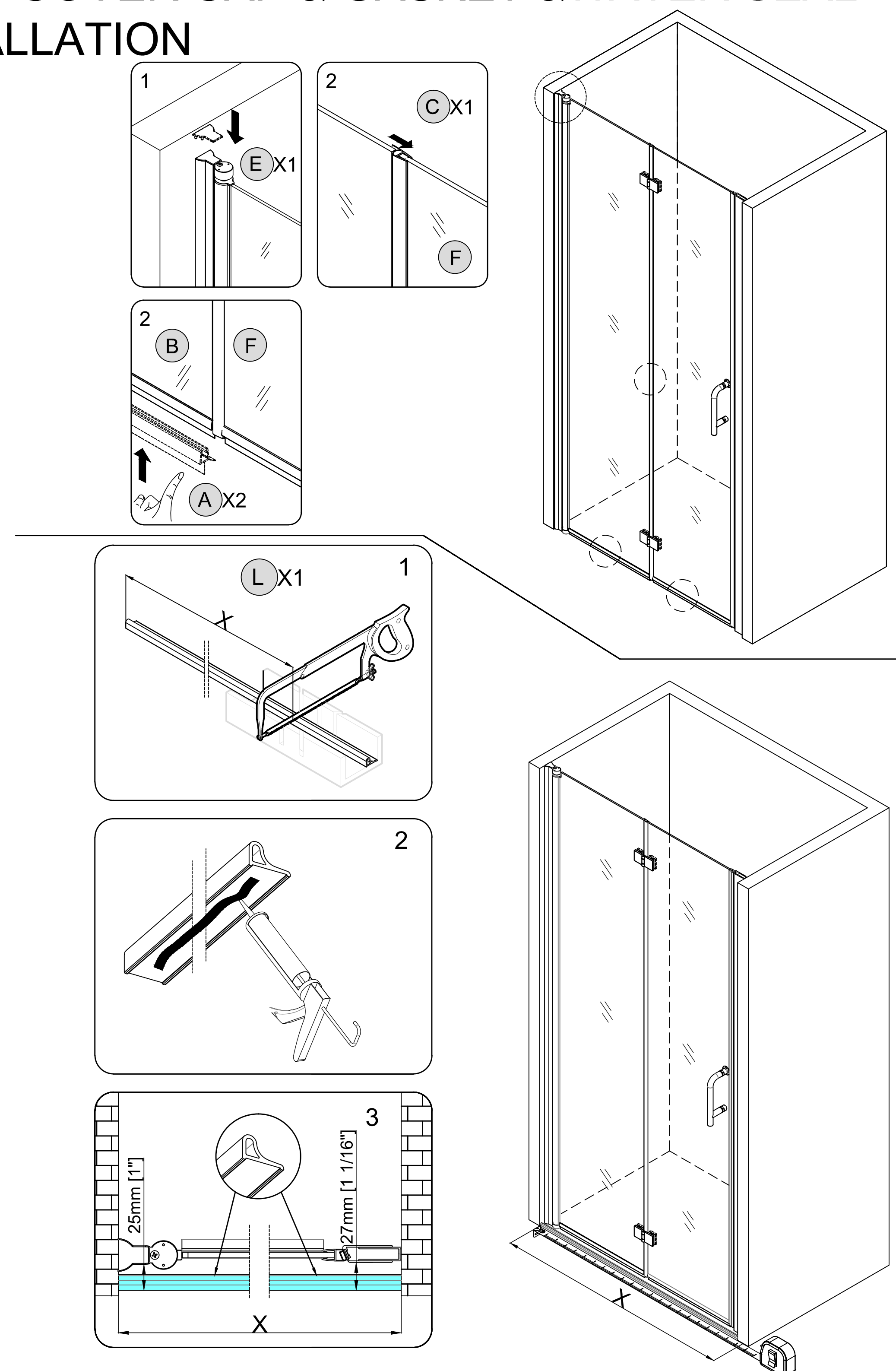
3.MAGNETIC STRIP INSTALLATION



2. DOOR PANEL-2 & HANDLE INSTALLATION



4.TOP COVER CAP & GASKET &WATER SEAL INSTALLATION



5. SEALING

Ensure that the Shower door closes tightly and opens smoothly.
Apply a good quality silicone sealant along the wall Jamb(D)&(K)and Water seal (L) .
 Allow 24 hours for silicone to dry before use.

