

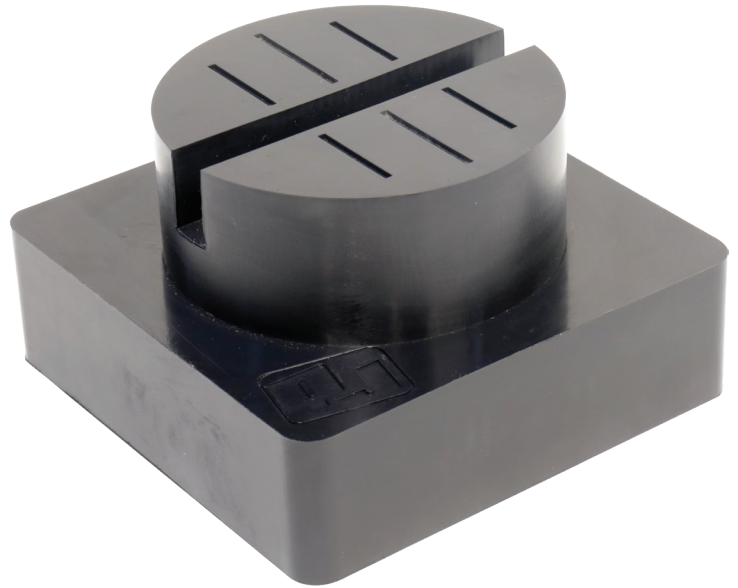
Round Pinch-Weld Blocks

PUCK-STYLE PINCH-WELD BLOCKS

Made of a urethane rubber material, round pinch-weld blocks are the perfect match for pinch-weld rails with difficult lifting points. No matter how much material is surrounding your lifting point, the round puck-like design of these lifting pads will safely secure your car, while protecting both your pinch-weld and the surrounding material.

Over time normal lifting pads can sustain damage on unibody cars with a pinch-weld rail access point, and can even cause slight damage to the rail. Because of their unique construction, heavy-duty pinch-weld contact pads are the ideal solution to any trade-show cars or exotics with a unibody construction. Our square pinch-weld block accessories are perfect for dealing with unibody frames, but their design could possibly harm any material that is closely surrounding your pinch-weld lifting point. Round pinch-weld pads allow you to secure your lifting point without infringing on any nearby material.

Made from a durable urethane rubber, round pinch-weld pads fit securely in the lifting tray for every QuickJack model and are resistant to both liquid and physical damage. As you are lifting, the round slotted pucks hold your pinch-weld firmly in place, protecting your undercarriage and eliminating any risk of slippage. With so much riding on such a small surface area you need to be sure that you have the best tools for the job. Round pinch-weld pucks will provide you with peace of mind for both your safety and the safety of your car.



SPECIFICATIONS

Overall height	2.5" (60 mm)
Width	4" (100 mm)
Puck height (w/o base)	1.25" (30 mm)
Puck diameter	3" (76 mm)
Pinch-weld depth	0.6" (16 mm)
Pinch-weld width	0.4" (10 mm)