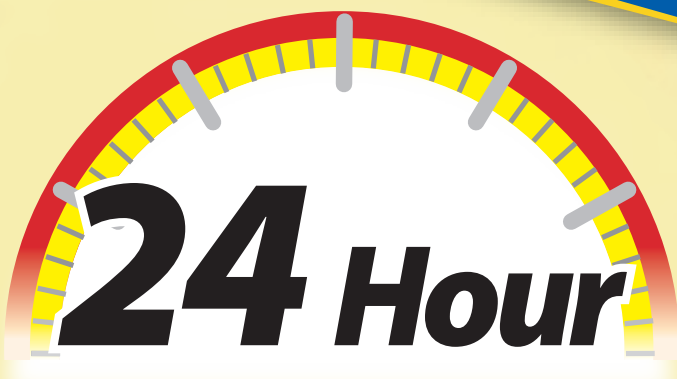
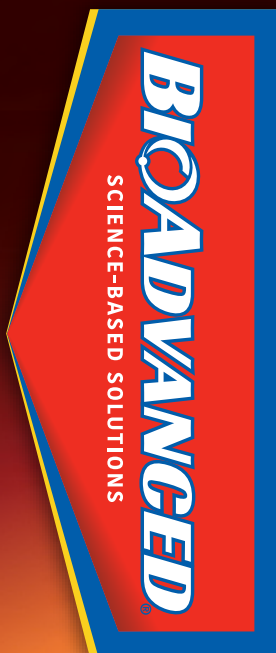


Treats up to 25,000 Square Feet



Lawn Insect & Fire Ant Killer

READY-TO-SPREAD GRANULES

Kills ALL types of listed Lawn Invading Pests

Kills Fire Ants and prevents new mound formation ALL SEASON LONG



See Results in Minutes!

Treats up to **25,000 Sq Ft**

NET WT 20 Lb (9 kg)



*Mata todos los tipos de insectos invasores que dañan el césped de la lista
Mata hormigas de fuego e impide que formen un nuevo montículo toda la temporada*

KEEP OUT OF REACH OF CHILDREN
CAUTION See back panel for additional precautionary statements.
FOR OUTDOOR USE AROUND THE HOME ONLY

Active Ingredient:	
Lambda-cyhalothrin	0.1%
Other Ingredients	99.9%
Total	100.00%

Lawn Insect & Fire Ant Killer

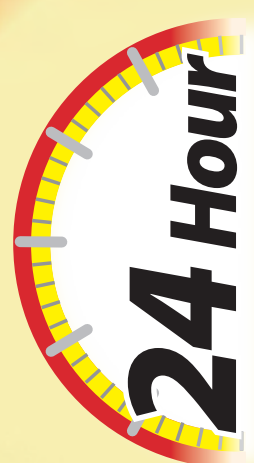


Treats up to 25,000 sq ft

READY-TO-SPREAD GRANULES

Treats up to 25,000 sq ft

READY-TO-SPREAD GRANULES

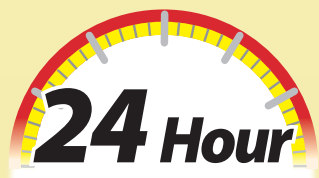


Lawn Insect & Fire Ant Killer



Lawn Insect & Fire Ant Killer READY-TO-SPREAD GRANULES

Treats up to 25,000 sq ft



Lawn Insect & Fire Ant Killer READY-TO-SPREAD GRANULES

READ ENTIRE LABEL BEFORE USE

DIRECTIONS FOR USE It is a violation of Federal law to use this product in a manner inconsistent with its labeling. **Keep children and pets off treated area until product has been watered in and lawn is dry.** In New York State, this product may not be applied to lawns within 100 feet of a coastal marsh, or stream that drains directly into a coastal marsh.

GENERAL INFORMATION

For use outdoors, on lawns and as a barrier band treatment around house foundation. Kills ants (including Fire Ants), armyworms (Fall and Yellow-striped), billbugs, chinch bugs, crickets, cutworms, earwigs, European crane flies, fleas, grubs, roaches (German and American), sod webworms, ticks and other insect pests listed in the tables below.

To use this product follow these 3 easy steps –

- (1) Determine the size of the job and measure the area to be treated.
- (2) Determine the proper setting for your spreader using the spreader setting chart.
- (3) Treat as directed in rate chart. Complete coverage is important. Water in granules immediately following application.

NOTE:

- Make no more than 6 applications per year per location at the low use rate.
- Make no more than 3 applications per year per location at the high use rate.
- Do not allow product to run off from target area.

OVERALL LAWN APPLICATION

PESTS	USE RATE	USE INSTRUCTIONS
Ants (Argentine, Southern, Field, Allegheny Mound, Florida Carpenter, Black Carpenter, Cornfield, Honey, Pavement, Red Imported Fire Ant, Nuisance), Armyworms (Fall & Yellow-striped), European Crane Flies, Crickets, Cutworms, Earwigs, Fleas, Lawn moths (sod webworms), Grasshoppers, Japanese beetle (adults), Pillbugs, Spittle bugs, Mites, Green June Beetles, Leafhoppers, Millipedes, Springtails and Ticks (including Ticks which may transmit Lyme Disease).	Apply at the rate of 0.8 lb per 1,000 sq. ft. (an area 20' x 50') For season long control apply at the rate of 2 lb per 1,000 sq. ft. (an area 20' x 50')	Apply with a fertilizer spreader (see spreader setting chart). Apply when grass is dry and water the lawn lightly immediately following application. For season long control of insects above the soil, including Red Imported Fire Ants, apply at higher use rate. Treat when insects first appear or when you notice lawn damage.
Billbugs, Grubs (Japanese beetle grubs, Green June Beetle Grubs), <i>Ataenais spretulus</i> (dung beetles), Hyperodes Weevils, Mole Crickets, Chinch bugs	Apply 1.2 lb. per 1,000 sq. ft. of lawn. Make no more than 6 applications per year at the low use rate or 3 times per year at the highest use rate.	Water grass completely immediately following application. Treat when insects first appear or when you notice lawn damage. For hyperodes weevils , apply in April-May. For billbug control , apply in May or when activity is first observed or when chewed or brown grass indicates damage from these insects. For grub control , except on dung beetle, treat any time between late July and early October. For dung beetle grub control , apply in early spring or early summer (March-July) when damage is first noticed. Immediately following application, completely water grass with ¼ to ½ inch of water. If a second generation occurs, treat again in late summer or early fall.

BAND TREATMENT

Around house foundation to control pests normally found around or near foundations of houses, as well as in lawns, and certain of these pests that may enter houses.

PESTS	USE RATE	USE INSTRUCTIONS
Ants (Argentine, Southern, Field, Allegheny Mound, Florida Carpenter, Black Carpenter, Cornfield, Honey, Pavement, Red Imported Fire Ant, Nuisance), Fleas, Roaches (German and American), Palmetto bugs, Waterbugs, Millipedes, Mites, Silverfish, Sowbugs (Pillbugs), Crickets, Earwigs	Apply at the rate of 0.8 lb per 1,000 sq. ft. (an area 5' x 200') oz. or 1.25 oz. per 100 sq. ft. (10' x 10').	Apply a 3 to 5 foot band of granules next to the house foundation as well as lawns. Evenly distribute the granules. Water lightly immediately following application. Treat when insects first appear or when you notice lawn damage.

SPOT TREATMENT

PESTS	USE RATE	USE INSTRUCTIONS
Ants (Argentine, Southern, Field, Allegheny Mound, Florida Carpenter, Black Carpenter, Cornfield, Honey, Pavement, Red Imported Fire Ant, Nuisance)	Mound Treatment: Apply 1/2 teaspoon over and around each ant hill.	Water lightly immediately following application.
Fire Ants	Mound Treatment: Apply 1/4 cup over, and 2 ft. around, each fire ant mound.	Immediately following application, water in completely. Apply a minimum of 1 gallon of water to each mound area. To prevent the disturbance of ants, water gently. Use of high pressure watering equipment may disturb the ants and cause migration, reducing product effectiveness. NOTE: For best results, apply in cool weather, 65°-80° F, or in early morning or late evening hours. Treat new mounds as they appear. Fast acting. Works within 24 hours.

SPREADER SETTINGS FOR LAWN APPLICATION

NOTE: The spreader settings stated are approximate. Accurately weigh a few pounds into your spreader and apply to a measured area. To assure correct rate of application, adjust spreader settings if needed.

BROADCAST SPREADER	SETTING		
	.8 lb/1,000 sq ft	1.2 lbs/1,000 sq ft	2.0 lbs/1,000 sq ft
Scotts Basic	2.75	3.25	4.25
Scotts Standard	2.75	3.25	4
Scotts Deluxe Edgeguard	2.75	3.25	3.75
Vigoro 10000	4.75	5.25	6.5
Vigoro 15000	4.75	5.25	3

DROP SPREADER	SETTING
	2.0 lbs/1,000 sq ft
Scotts Accugreen 1000	3.25
Scotts Accugreen 2000	3.25
Scotts Accugreen 3000	3.25

If your spreader is not listed, please call our Consumer Service Hotline toll-free (877) 229-3724 for help.

TIP: 1,000 sq. ft. = 20 ft. x 50 ft.

Do not use a spreader that applies granules in narrow, concentrated or uneven bands. Be sure the spreader works properly and spreads granules evenly.

STORAGE AND DISPOSAL

STORAGE:

Reclose container tightly after each use. Store in a cool, dry area which is inaccessible to children and pets.

DISPOSAL:

If Empty: Do not reuse this container. Place in trash or offer for recycling if available.

If Partly Filled: Call your local solid waste agency or 1-800-CLEANUP for disposal instructions. Never place unused product down any indoor or outdoor drain

Note: Buyer assumes all responsibilities for safety and use not in strict accordance with directions.

FIRST AID

IF IN EYES:

- Hold eye open and rinse slowly and gently with water for 15-20 minutes.
- Remove contact lenses, if present, after the first 5 minutes, then continue rinsing eye.
- Call a Poison Control Center or doctor for treatment advice.

Have the product container or label with you when calling a Poison Control Center or doctor, or going for treatment. You may also call Poison Control Center 1-800-222-1222.

PRECAUTIONARY STATEMENTS

HAZARDS TO HUMANS AND DOMESTIC ANIMALS

CAUTION - Causes moderate eye irritation. Avoid contact with eyes or clothing. Wash hands thoroughly after handling and before eating or smoking. Food utensils such as spoons or measuring cups must not be used for food purposes after use in measuring pesticides.

ENVIRONMENTAL HAZARDS

This product is highly toxic to fish and aquatic vertebrates. Do not apply directly to water.

EPA Reg. No. 53883-223-92564

Est. No. indicated by 3rd and 4th digits of the batch number on this package.

(79) = 5905-GA-01 (89) = 9198-AL-01 (68) = 67572-GA-1

(36) = 9198-OH-1M (93) = 9198-OH-2B

BioAdvanced® is a registered trademark of SBM Life Science Corp.

Distributed by: SBM Life Science Corp., 1001 Winstead Drive, Suite 500, Cary, NC 27513

400212868a 070620V1

ALMACENAMIENTO Y ELIMINACIÓN

ALMACENAMIENTO:

Volver a cerrar muy bien el contenedor luego de cada uso. Almacenar en un lugar fresco, seco que no esté al alcance de niños y mascotas.

ELIMINACIÓN:

Si está vacío: no volver a usar este contenedor. Colocar en la basura u ofrecer para su reciclado si fuese posible.

Si está parcialmente lleno: llamar a la agencia local de desechos sólidos o al 1-800-CLEANUP para recibir instrucciones sobre su eliminación. Nunca colocar el producto sin usar en un drenaje de salida o de entrada.

Nota: el comprador asume toda la responsabilidad por seguridad y uso del mismo que no esté en estricto acuerdo con las indicaciones de uso.

PRIMEROS AUXILIOS

SI ENTRA EN CONTACTO CON LOS OJOS:

- Mantener los ojos abiertos y enjuagar lentamente y cuidadosamente con agua durante 15 o 20 minutos.
 - Quitar los lentes de contacto, si los tuviera, después de los primeros 5 minutos, luego continuar lavando.
 - Llamar al centro de control de envenenamiento o al médico para asesoramiento sobre el tratamiento.
- Tenga el contenedor o etiqueta del producto con usted cuando llame al centro de control de envenenamiento o al médico, o cuando vaya para recibir tratamiento. Puede llamar al centro de control de envenenamiento al 1-800-222-1222.

MANTENER FUERA DEL ALCANCE DE LOS NIÑOS

DECLARACIONES DE PRECAUCIÓN

RIESGOS PARA SERES HUMANOS O ANIMALES DOMÉSTICOS

PRECAUCIÓN - Causa irritación moderada en los ojos. Evitar contacto con los ojos o ropa. Lavar las manos cuidadosamente con agua y jabón luego de manipularlo y antes de comer, beber o fumar. No se deben usar utensilios tales como cucharas o tazas medidoras con fines de alimentación luego de usarlos para medir los pesticidas

RIESGOS AMBIENTALES

Este producto es tóxico para los vertebrados acuáticos y peces. No aplicar directamente en el agua.

