

Owner's Manual

STAINLESS STEEL

PROFESSIONAL

RANGE HOOD



IMPORTANT SAFETY INSTRUCTIONS **PLEASE READ ALL INSTRUCTION BEFORE USING**

SAFETY PRECAUTIONS

WARNING! To reduce the risk of fire, electric shock or injury to persons, observe the following:

A. Use this unit only in the manner intended by the manufacturer. If you have

questions, please contact the manufacturer.

- B. Disconnect the electrical plug prior to any maintenance and cleaning.
- C. Do not use this unit with any solid-state speed control device
- D. This unit must be grounded.

Caution — This hood is for general ventilating use only. Do not use to exhaust hazardous or explosive materials and vapors.

To reduce the risk of injury to persons in the event of a range top grease fire, observe the following:

- A. Smother flames with a close-fitting lid, cookie sheet or metal tray, and then turn off the burner. **BE CAREFUL TO PREVENT BURNS.**
- B. If the flame do not go out immediately ,**EVACUATE AND CALL THE FIRE DEPARTMENT**
- C. **NEVER PICK UP A FLAMING PAN---**you may be burned
- D. **DO NOT USE WATER** including wet dishcloths or towels –a violent steam explosion will result.
- E. Use an extinguisher **ONLY** if:
 - 1. You know you have a class ABC extinguisher, and you already know how to operate it.
 - 2. The fire is small and contained in the area where is started
 - 3. The fire department is being called.
 - 4. You can fight the fire with your back to an exit.

Based on “Kitchen Fire Safety Tips” published by NFPA

WARNING---To reduce the risk of a range top grease fire:

- A. Never leave surface units unattended at high settings. Boilovers cause smoking and greasy spillovers that may ignite.
- B. Turn hood **ON** always when cooking at high heat or when cooking flaming foods
- C. Clean ventilating fans frequently. Grease should not be allowed to accumulate on fan or filter
- D. Use proper fan size. Always use cookware appropriate for the size of the surface element

Warning – To reduce the risk of fire, electric shock or injury to persons, observe the following:

- A. Installation work and electrical wiring must be done by qualified persons in accordance with all applicable codes and standards, including fire-related construction
- B. Sufficient air is needed for proper combustion and exhausting of gases through the flue (chimney) of fuel burning equipment to prevent back drafting. Follow the heating equipment manufacturer’s guideline and safety standards such as those published by the National Fire Protection Association (NFPA), and the American Society for Heating, Refrigeration and Air Conditioning Engineers (ASHRAE), and the local code authorities.
- C. When cutting or drilling into wall or ceiling, do not damage electrical wiring and other hidden utilities.
- D. Ducted fans must always be vented to the outdoors.

Warning— To reduce the risk of fire, use only metal ductwork

- Do not attempt to repair or replace any part of your hood unless it is specifically

recommended in this manual. All other servicing should be referred to a qualified technician.

WARNING – TO REDUCE THE RISK OF A RANGE TOP GREASE FIRE:

- a) Never leave surface units unattended at high settings. Boilovers cause smoking and greasy spillovers that may ignite. Heat oils slowly on low or medium settings.
- b) Always turn hood ON when cooking at high heat or when flambeing food (i.e. Crepes Suzette, Cherries Jubilee, Peppercorn Beef Flambe’).
- c) Clean ventilating fans frequently. Grease should not be allowed to accumulate on fan or filter.
- d) Use proper pan size. Always use cookware appropriate for the size of the surface element.

WARNING – TO REDUCE THE RISK OF INJURY TO PERSONS IN THE EVENT OF A RANGE TOP GREASE FIRE, OBSERVE THE FOLLOWING:

- a) SMOTHER FLAMES with a close-fitting lid, cookie sheet, or metal tray, then turn off the burner. BE CAREFUL TO PREVENT BURNS. If the flames do not go out immediately,

EVACUATE AND CALL THE FIRE DEPARTMENT.

- b) NEVER PICK UP A FLAMING PAN – You may be burned.
- c) DO NOT USE WATER, including wet dishcloths or towels – a violent steam explosion will result.
- d) Use an extinguisher ONLY if:
 - 1) You know you have a Class ABC extinguisher, and you already know how to operate it.
 - 2) The fire is small and contained in the area where it started.
 - 3) The fire department is being called.
 - 4) You can fight the fire with your back to an exit.

WARNING-TO REDUCE THE RISK OF FIRE, USE ONLY METAL DUCTWORK

READ AND SAVE THESE INSTRUCTION

GROUNDING INSTRUCTIONS

This appliance must be grounded. In the event of an electrical short circuit, grounding reduces the risk of

electric shock by providing an escape wire for the electric current. This appliance is equipped with a cord

having a grounding wire with a grounding plug. The plug must be plugged into an outlet that is properly installed and grounded.

WARNING – Improper grounding can result in a risk of electric shock.

Consult a qualified electrician if the grounding instructions are not completely understood, or if doubt

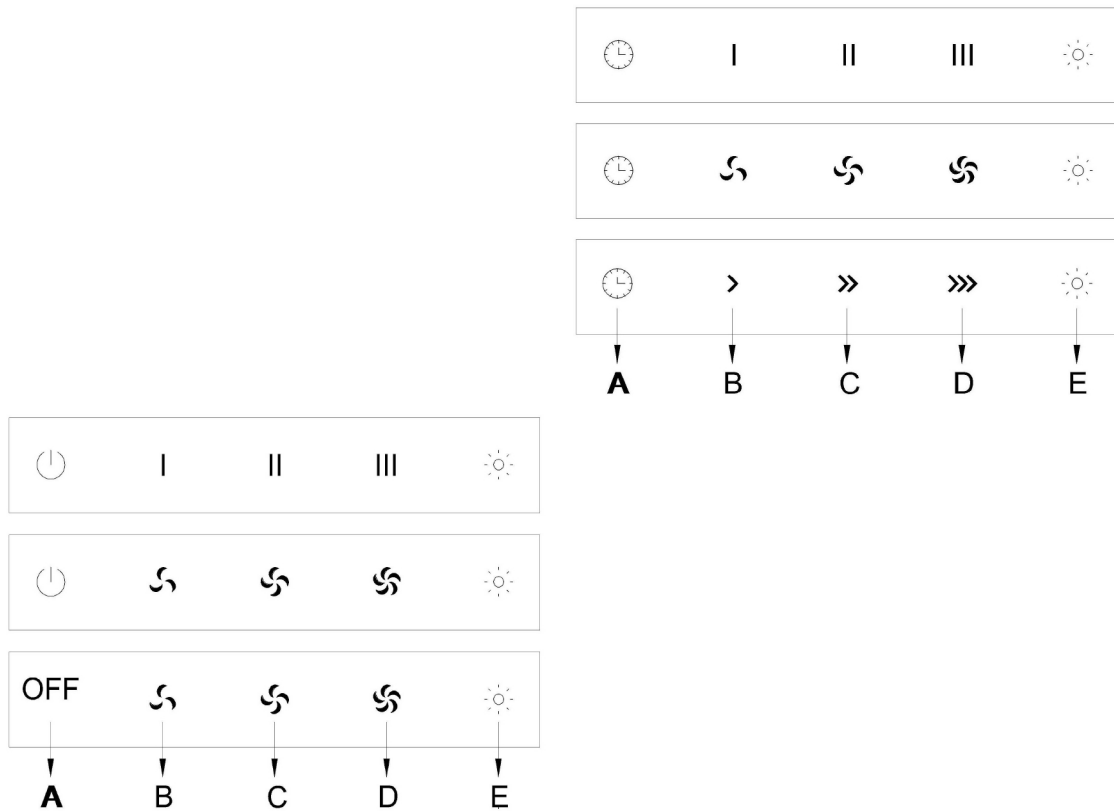
exists as to whether the appliance is properly grounded.

Do not use an extension cord. If the power supply cord is too short, have a qualified electrician install an outlet near the appliance.

Controls

1. Warming lamps ON/OFF switch

The warming lamps are controlled by their own rocker switch for the warming lamps to begin heating.



• COMMANDS:

A = OFF

B = SPEED I / OFF

C = SPEED II / OFF

D = SPEED III / OFF

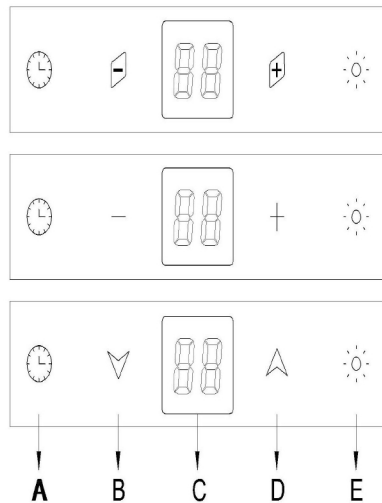
E = LIGHT

• If your appliance does not have the **INTENSIVE** speed function, press key A for two seconds and it will be activated for 15 minutes after which it will return to the previously set speed. However, when the function is active the LED flashes.

By pressing any key for the exclusion of the hood light the hood will return immediately to its normal functioning.

The “automatic stop timer” delays stopping of the hood, which will continue functioning for 15 minutes at the operating speed set at the time this function is activated.

•COMANDS PATTERN :



•COMMANDS:

- A= Timer (automatic shut off)
- B= Speed 1 / adjust / switch off
- C= digital display screen (showing timer and speed)
- D= Speed 3 / adjust / switch off
- E= Light

When pressing A, digital display screen shows "15 minutes" for timer, and the minutes can be adjusted by pressing "+" or "-" on B and D. And the first speed is on, pressing A once to switch off, the digital display shows "00".

When pressing B, it shows "F1" on the digital display screen, and the first speed is on. To press B again to switch off and the digital display shows "00".

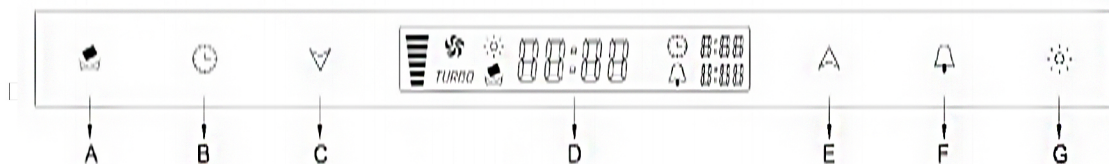
When pressing D, it shows "F3" on the digital display screen, and the third speed is on. To press D twice is to switch off the speed and it will show "00" on the screen.

The second speed F2 and Turbo speed F4 can be adjusted by pressing B or D.

When pressing E both buttons light as well as the appliance's light will on, to switch off the light press E again.

If motor and light are needed together or only motor is needed - press A automatic switch off timer will on, and it will delay 15 minutes to turn off the motor and light. To press B or D is to adjust the time, and to press A again is to stop the timer.

•COMANDS PATTERN :



- A= Filtering system / Set clock
- B= Delay Timer
- C= Speed 1/ "-" adjust / off
- D= Digital display
- E= Speed 1/ "+" adjust / off
- F= Alarm

G= Light

When the Key A is flashing, at the same time “ ” is flashing on the digital display, it reminds the user to clean the filters. After it's cleaned and then assemble back, push the key A till the light is off to set the function again.

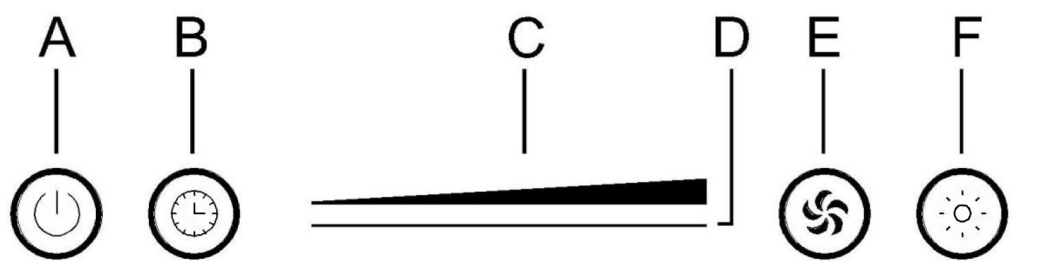
When pushing key A for 3 seconds, the clock “ ” on the digital display will flash, press key A again to switch to set hours and minutes, and then press C or E to set the correct time. The Clock's system is 24 hours.

When the motor is running, press key B the light will on. At the same time it will show symbol of “ ” flashing on the digital display, press key B again to switch the function into setting hours and minutes. To automatically shut off the motor please press key C or key E. Press key B for 3 seconds to stop the delay timer.

Press key C or E, the first speed is on, and it shows “ ” on the digital display, and press key C once again to turn off; To run the 2nd, 3rd and “Turbo” speed, press Key E. If “Turbo” speed is on, press key E once again to turn off; then to press key C is to adjust the speed down from 3rd, 2nd to 1st speed. On the special function set, after the speed “TURBO” runs for 2 minutes, it automatically switches to 3rd speed.

Press key F, the light will flash, and the symbol “ ” will flash on the digital display, to press key F again is to set hours and minutes. Set the alarm time by pressing the key C or E. To stop the alarm, press the key F. And to cancel the alarm set, press key F for 3 seconds.

Press the key G, the light is on, and it shows “ ” on the digital display. Press the key G again is to turn off the light.



、 Instructions for use

A == power on / off

B == automatically stop the timer on / off

C == stalls, counting time display

D == sliding touch strips

E == motor, automatic on / off

F == lamps on / off

Power on, press the A key, A key indicator lights, the All button to enter standby.

- 1) If you press the B key, B key indicator, the motor is the most low start, and the default time of 15 minutes, stop the clock display flashes can change to stop the clock timesliding touch D and C display (display every five minutes), after 3 seconds, the the B key indicator flashes, most low-grade to enter the timing the

motor stops running, sliding touch D to change the motor stalls and C display, full The grid for stir gear, when the motor running in the a stir gear, C the last two frames on the display flashes.

- 2) If you press the E key, the motor is the most low start sliding touch D to change the motor

stalls, and C on the display shows the full grid stir files, when the motor is running in the file of the stir, C the last two frames on the display flashes.

When the motor is running, press the B button, B button indicator lights and C screen starts flashing, you can change to stop the clock time sliding touch D and C display (display every five minutes), 3 seconds after, B indicator flashes, the motor into the timing to stop running; To cancel this function, press the B button again.

- 3) when the F key is pressed, the indicator light lighting lights; then press the F key, lighting the lamp.

Care and Cleaning

Baffle grease filters and drip trays

The metal baffles channel grease released by foods on the cook top into the trip trays. The baffles also help prevent flaming foods on the cook top from damaging the inside of the hood.

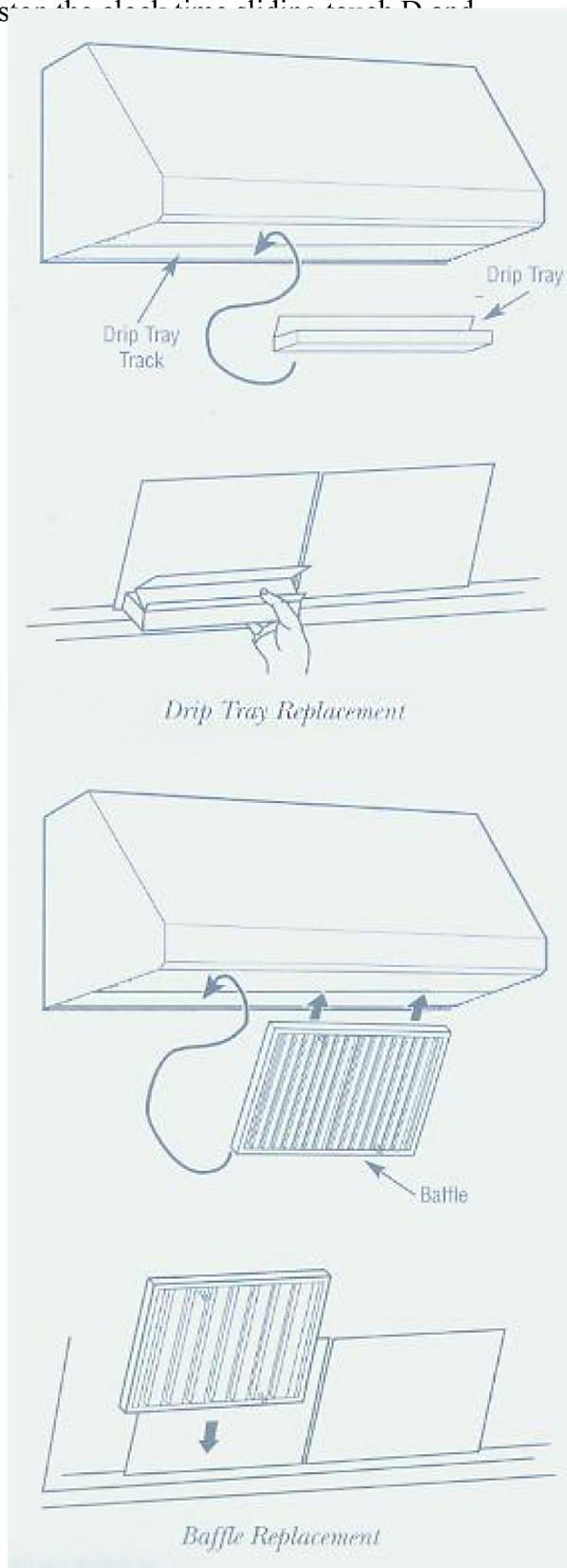
For this reason, the baffles must ALWAYS be in place when the hood is used. The grease baffles and drip trays should be cleaned once a month, or as needed.

To clean the grease baffles and drip trays,

Drain and wipe all excess grease with a dry paper towel, Soak them and then swish them around in hot water and detergent. Don't use ammonia or ammonia products because they will darken the metal. Do not use abrasives or oven cleaners. Rinse, shake and let them dry before replacing. **They may also be cleaned in an automatic dishwasher.**

To remove:

Grasp the baffle knobs and pull them up,



forward and out. Grasp the drip tray and carefully lift it up and out of the hood track.

To replace the drip trays:

1. Place and seat the drip tray into the hood rack.
2. Slide them left and right until all trays are side-by-side in place in the track

To replace the baffles:

1. Hold the baffle by two knobs.
2. Place the up end of the baffle against the inside front of the hood.
3. Slide it up and push the bottom end back until it firmly seats into place

Stainless steel surface (on some models)

Do not use a steel-wool pad, it will scratch the surface.

1. Shake bottle well
2. Place a small amount of professional Stainless Steel Cleaning Polish and Conditioner on a dry cloth or dry paper towel.
3. Clean a small area rubbing with the grain of the stainless steel if applicable.
4. Repeat as necessary.

Light bulbs

The bulbs are located on the underside of the hood.

To change the light bulbs A:

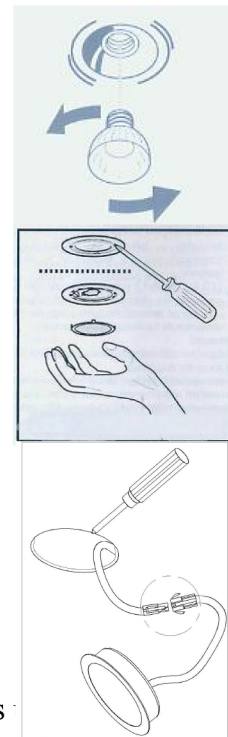
1. Grasp the bulb on the edges and remove by turning it anti-clockwise.
2. Replace with the same type and size of bulb

To change the light bulbs B:

Use a one-edged screwdriver or any other appropriate tool to lift and remove the overhead light fixture. Replace the damaged lamp. Use only halogen lamps as the original specification, avoiding contact with hands. Return the light fixture to its position (snap fastening)

To change the light bulbs C:

To change the light bulb , Using a flat screw , take off the bulb and then take off the lamp wires



Installation Instructions

BEFORE YOU BEGIN

Read these instructions completely and carefully.

- **IMPORTANT** – Save these instructions for local inspector's
- **Note to installer** – Be sure to leave these instructions with the Consumer.
- **Note to Consumer** – Keep these instructions for future reference.
- **Skill Level** – Installation of this vent hood requires basic mechanical and electrical skills.
- **Completion time** – 1 to 3 hours..
- **Proper installation** is the responsibility of the installer.

CAUTION:

Due to the weight and size of these vent hoods and to reduce the risk of personal injury or damage to the product, **TWO PEOPLE ARE REQUIRED FOR PROPER INSTALLATION.**

WARNING:

To reduce the risk of the fire or electrical shock, do not use this range hood with any external solid-state speed control device. Any such alteration from original factory wiring could result in damage to the unit and/or create an electrical safety hazard.

AVERTISSEMENT TO REDUCE THE RISK OF THE FIRE, USE ONLY METAL DUCTWORK.

INSTALLATION CLEARANCES

These vent hoods are designed to be installed onto a wall or beneath a soffit or cabinet.

- Install these hoods*30"Min. to 36" Max. above the cooking surface.

*These hoods may be installed 24" min. above a gas or electric drop-in style cooktop. Always observe the 30" to 36" clearance when installed over any professional style cooktop or range.

Soffit Installation

In this installation the ductwork running from the top of the hood will be concealed in the soffit or upper cabinetry.

Wall Mount Installation

For this installation, a decorative duct cover is available to conceal the ductwork running from the top of the hood. Use of the duct cover requires special consideration to the installation height above the countertop.

Ductwork Planning

- These vent hoods are equipped for 10" (254mm) round ductwork. This hood may be vented vertically through upper cabinet, soffit or ceiling .A duct transition piece is supplied for vertical exhaust .Use locally supplied elbows to vent horizontally through the rear wall.
- Determine the exact location of the vent hood.
- Plan the route for venting exhaust to the outdoors.
- Use the shortest and straightest duct route possible. For satisfactory performance, duct run should not exceed 150" (3810mm). equivalent length for any duct configurations.
- Use metal ductwork only
- Install a wall cap or roof cap with damper at the exterior opening. Order the wall or roof cap and any transition needed in advance.

Wall Framing for Adequate Support

These vent hoods are heavy. Adequate structural support must be provided. Hoods must be secured to vertical studs in the wall.

Hoods Are Equipped For 10" (254mm)Round Duct.

*Hoods are supplied with a 10" (254mm)round transition.

*Actual length of straight duct plus duct fitting must equivalent. Equivalent lengths of duct pieces are based on actual tests conducted by Evaluation Engineering and reflect requirements for good venting performance with any ventilation hood.

● Installation Instructions

- Use a level to draw a straight horizontal pencil line indicating the bottom of the hood.
- From the line indicating the bottom of the hood, measure 14-3/4" (374.5mm) up and draw another line for the location of the wood support measure 4" (101mm) down .See illustration.
- Use a level to draw a centerline from the bottom of the hood to ceiling or soffit.
- If venting out the ceiling ,extend the centerline forward on the ceiling or soffit
- Locate the centerline of a 10-1/2" (267mm) hole on the ceiling or soffit by measuring 6" (153mm) from the wall.

FOR DUCTING THROUGH REAR WALL:

- First, affix the M6 x 50 screws onto the wall (Fig.5/ Fig.6) .
- Use the 4 ST5x50 Philip self thread screw to secure onto the wood frame
- Align the hood to the wood frame squarely (Fig.5/ Fig.6) .

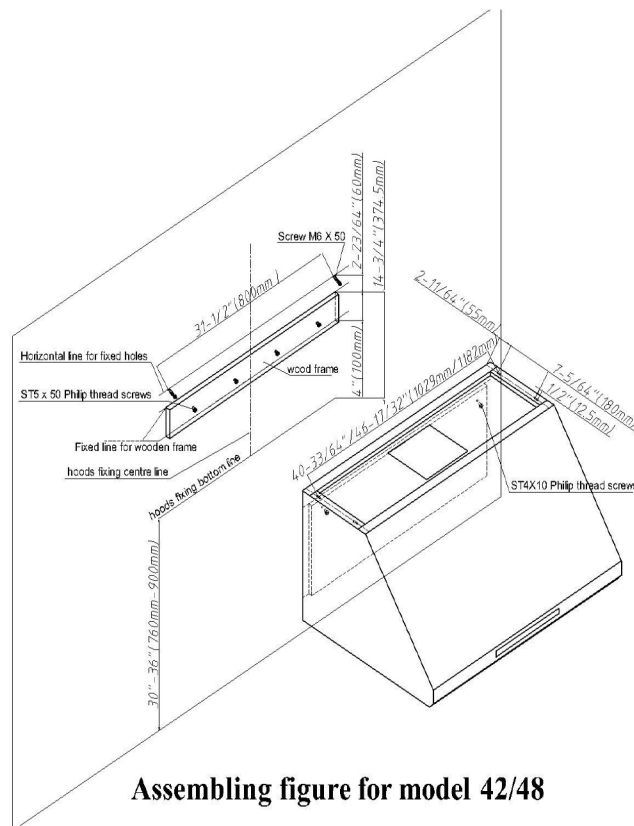
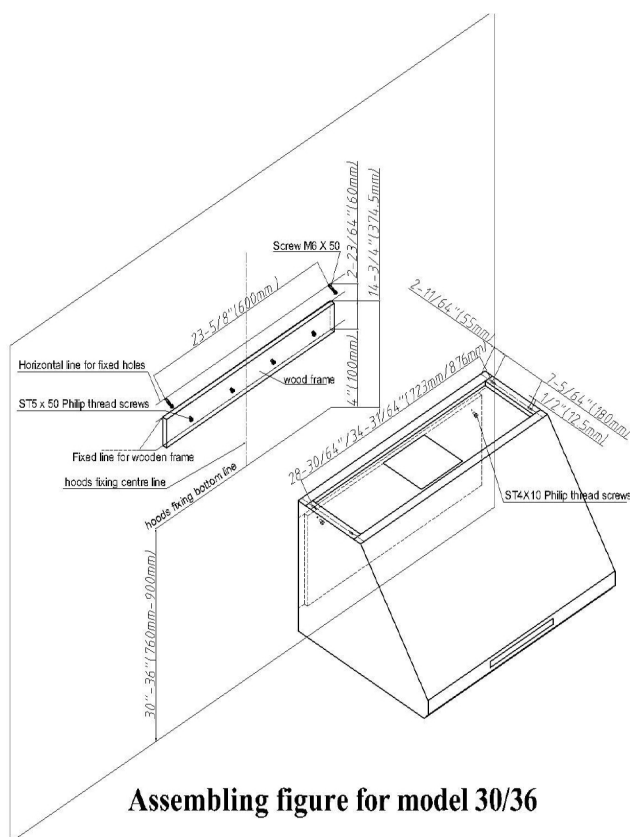


Fig. 5



Assembling figure for model 30/36

Fig. 6

FIXING OF THE EXHAUST DUCTING

Important:

- Remove the restrictive tape and make sure the blades are moving freely
- Align the duct with the exhaust opening by using the provided 4 pieces of ST4X10 Philip thread screws
- Use the duct tape to wrap all the duct joints for an airtight seal

Important:

- To provide extra support and to reduce the vibration, the appliance must fix onto the concrete wall
- Please utilize the 2 pieces of ST4X15 Philip thread screws to fix the base of the appliance onto the wood frame on the wall. (As illustrated in Fig. 5 & 6)

Important:

- Install ductwork, making connection in direction of airflow as illustrated.
- Secure joints in ductwork with sheet metal screws.
- Wrap all duct joints with duct tape for an airtight seal.

THE PROBLEM SOLVER

PROBLEM POSSIBLE CAUSE

Fan and lights do not operate when the switches are turned on	<ul style="list-style-type: none"> • The hood was never electrically connected by the installer/electrician/builder. Call the electrician/installer/builder to complete the installation. This is not covered by warranty • A fuse may be blown or a circuit breaker tripped. Replace the fuse or reset the circuit breaker
--	---

<p>The blower does not work but the lights do</p>	<ul style="list-style-type: none"> • The blower motor wire harness was not connected or was not connected properly by the installer/electrician/builder to its mating connector located inside the hood on the top surface, to the left of blower assembly. <ol style="list-style-type: none"> 1. Switch power off at service panel and lock the service disconnecting means to prevent power from being switched on accidentally. When the service disconnecting means cannot be locked, securely fasten a prominent warning device, such as a tag, to the service panel. 2. Remove the filters and locate the blower wire harness connector. Is it plugged into its mating connection? 3. If yes, plug the blower motor connector into its mating connector on the top of the hood. Switch the power back on. check to see if the fan now works. 4. If not, check the circuit breaker /fuse. If it is blown/tripped, replace /reset it. Does the blower work now? If not, call dealer for service.
<p>The blower fails to exhaust the smoke /steam/odors adequately</p>	<ul style="list-style-type: none"> • Many factors could be the root cause for reduced air-flow. <ol style="list-style-type: none"> 1. Installation could be the problem: Your hood was designed to meet specific ducting requirements. If your duct length exceeds the manufacturer's requirement, hood performance will suffer. Air-flow will also be reduced if the house duct work is too small or there are too many elbows in the system. Contact your installer or builder. 2. Obstruction in duct work could be the problem, make sure nothing is blocking the vent(bird nets or kinks in the duct work) 3. Damper blade may not be opening. Make sure the tape is removed from the damper blades and that is swing open freely. <ol style="list-style-type: none"> 4. Damper blade on wall or roof cap may not be opening. Contact your builder so they can make sure the damper swing open freely. 5. Dirty filters/baffles- make sure filters (and all hood surface) are kept clean of grease and dirt. 6. Check to be sure the filter is clean: if replacing the filter does not correct problem, call for service.
<p>The halogen /heat lamps does not work</p>	<ul style="list-style-type: none"> • The lamp or socket may be defective or a wire could be disconnected <ol style="list-style-type: none"> 1. Do some trouble-shooting by removing the lamps and place it in the socket of a lamp that does work (the heat lamp will fit in the halogen socket for the purpose of checking it). Does it work now? If not, the lamp is defective. If your hood is still in warranty, call for service and ask them to mail out a new lamp. State clearly whether you need the halogen lamp or the heat lamp. 2. If you placed the lamp in a working socket as illustrated,

	the original socket may be defective or a wire may be disconnected. Call for service.
--	---

THE MANUFACTURORY DECLINES ALL RESPONSIBILITY FOR EVENTUAL DAMAGES CAUSED BY BREACHING THE ABOVE WARNINGS.



Correct Disposal of this product

This marking indicates that this product should not be disposed with other household wastes throughout the EU. To prevent possible harm to the environment or human health from uncontrolled waste disposal, recycle it responsibly to promote the sustainable reuse of material resources. To return your used device, please use the return and collection systems or contact the retailer where the product was purchased. They can take this product for environmental safe recycling.