

REPAIR SHEET

BRAND

RYOBI

DESCRIPTION

18 Volt Backpack Sprayer

MODEL NO.

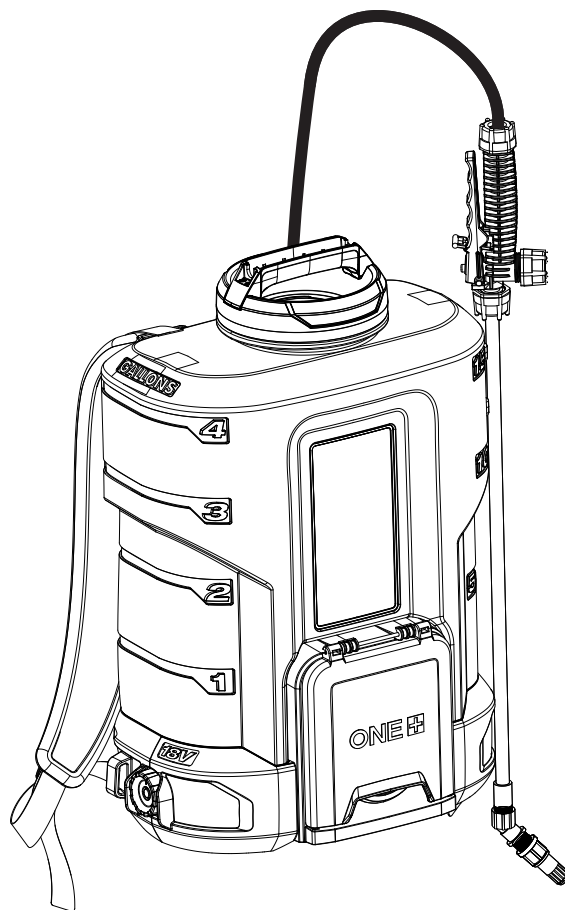
P2806

P2806VNM

MFG. NO.

107450001

107450101

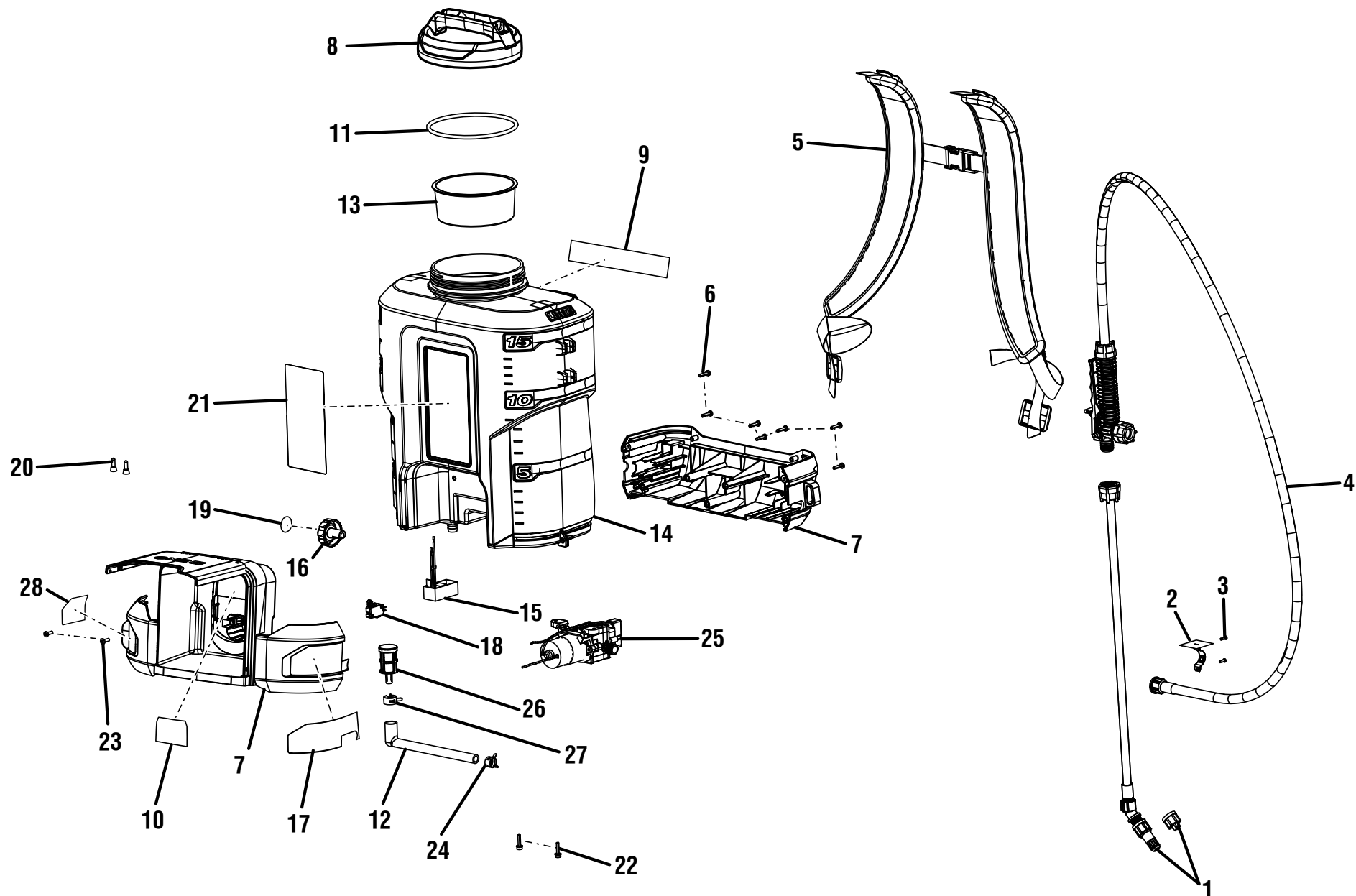


TECHTRONIC INDUSTRIES POWER EQUIPMENT

P.O. Box 1288, Anderson, SC 29622 ■ 1-800-525-2579 ■ www.ryobitools.com

5-20-21 (Rev:04)

The model number and manufacturing location will be found on a label attached to the product. Always mention this information in all communications regarding this product and when ordering parts.



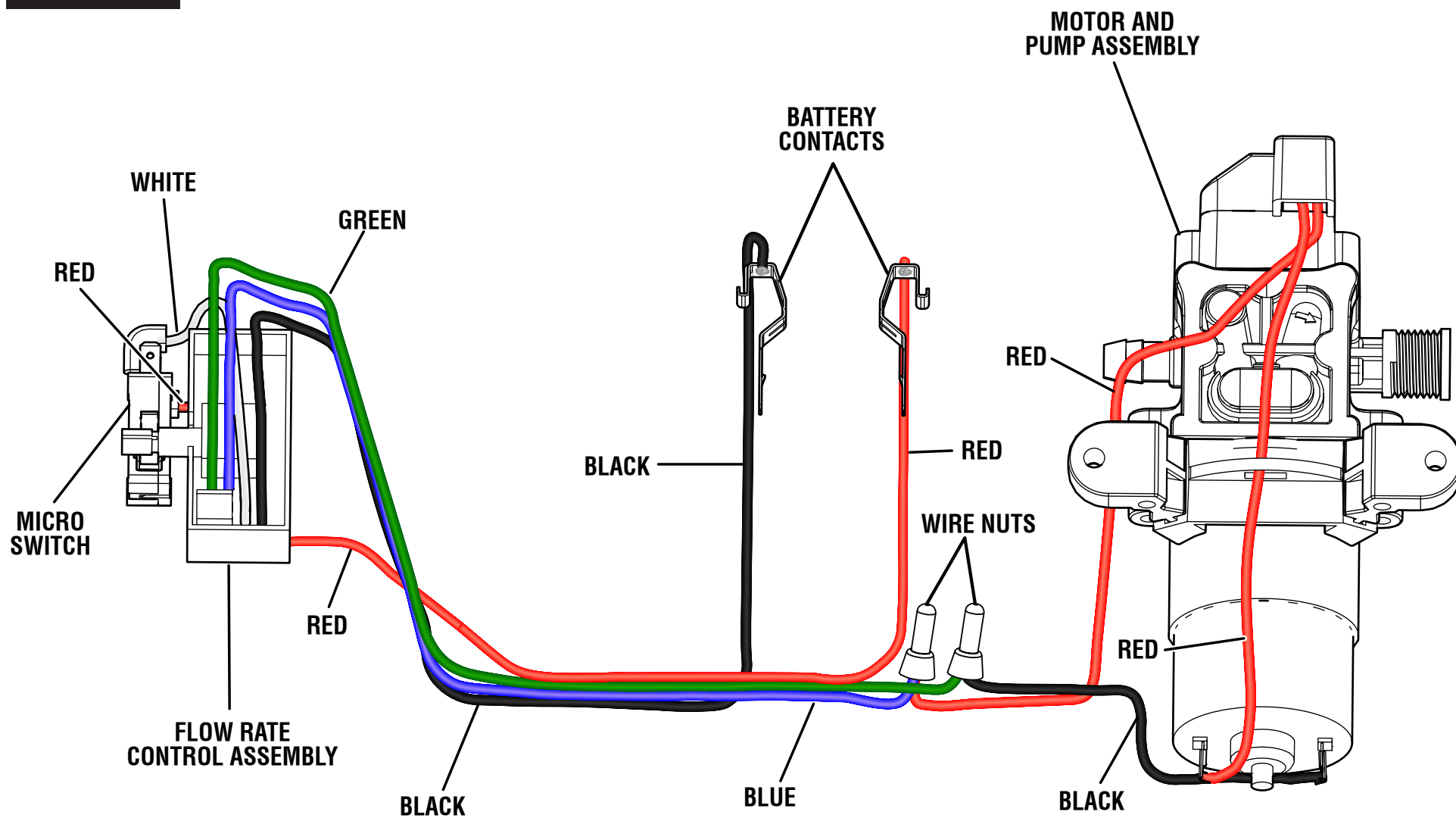


P2806/P2806VNM

PARTS LIST

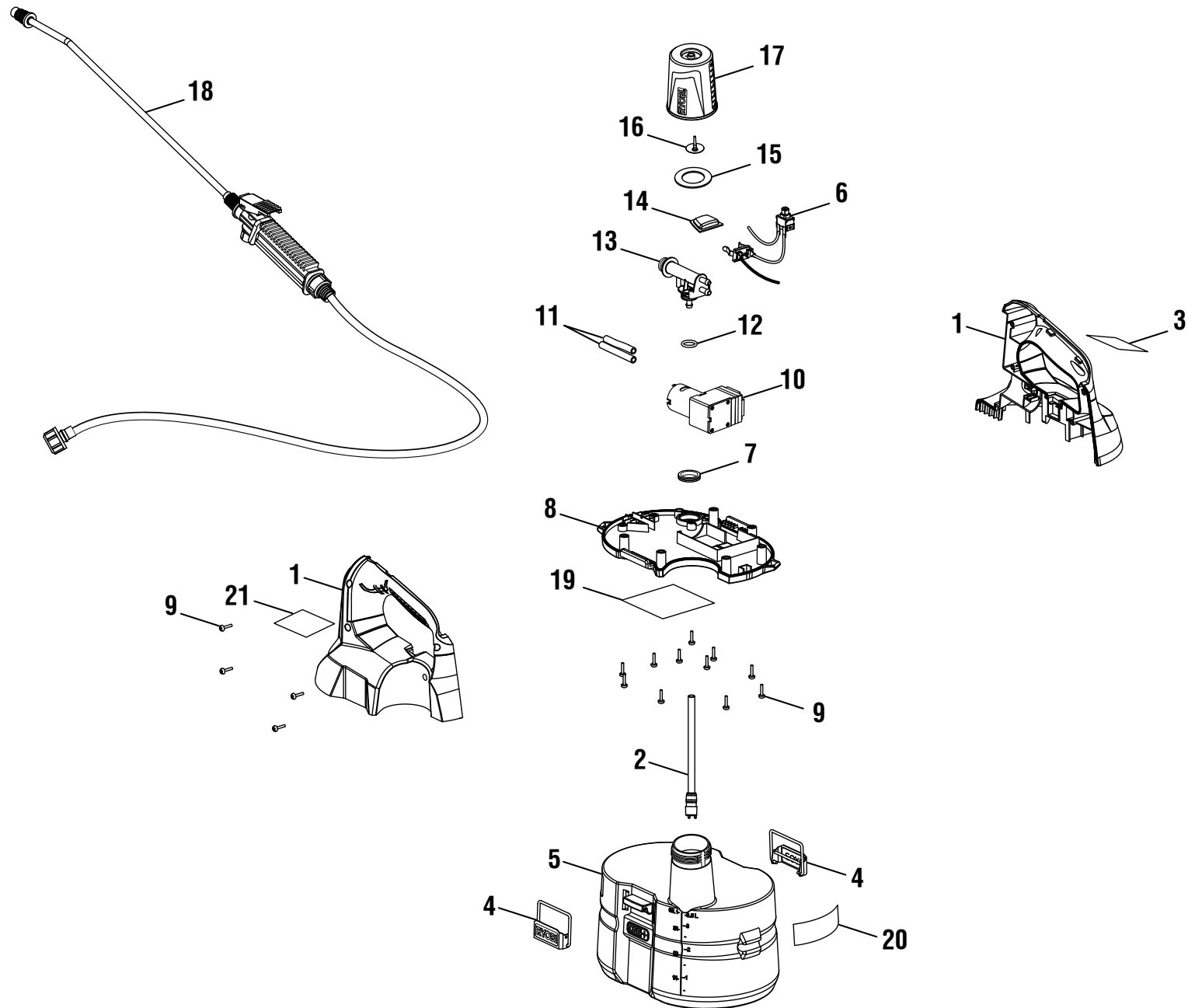
KEY NO.	PART NO.	DESCRIPTION	QTY.
1	313969003	Nozzle and Wand Assembly	1
2	659603001	Fastener	1
3	660230011	Screw (M3 x 10 mm, T10 Torx Pan Hd.)	2
4	316622001	Handle and Hose Assembly	1
5	316455001	Straps	1
6	660208049	Screw (M4 x 22 mm, Pan Hd.)	7
7	317225001	Housing Assembly (Inc. Key Nos. 10, 17 & 28, P2806)	1
	318350001	Housing Assembly (Inc. Key Nos. 10, 17 & 28, P2806VNM)	1
8	317226001	Tank Lid Assembly (Inc. Key No. 11)	1
9	941015098	Icon Warning Label	1
10	941588779	Data Label (P2806)	1
	941588851	Data Label (P2806VNM)	1
11	565777001	Rubber Gasket	1
12	541717001	Tube	1
13	541716001	Inlet Filter	1
14	317227001	Tank Assembly (Inc. Key Nos. 9 & 21)	1

KEY NO.	PART NO.	DESCRIPTION	QTY.
15	317228001	Flow Rate Control Assembly	1
16	317230001	Adjustable Switch Knob Assembly (Inc. Key No. 19)	1
17	941588777	Warning Label (FR/SP)	1
18	760746001	Micro Switch	1
19	941588778	On\Off Label	1
20	790009004	Wire Nut	2
21	941588780	Logo Label	1
22	660968001	Screw w/Conical Washer (M4 x 19 mm, T20 Torx)	2
23	660033002	Screw w/External Tooth Washer (M4 x 12 mm, T20 Torx)	2
24	659631001	Hose Clamp on Pump	1
25	316620001	Motor and Pump Assembly	1
26	316757001	Filter Assembly	1
27	659630001	Hose Clamp on Tank	1
28	941263034	4 Gal. Callout Label	1
	Not Shown:		
	998000325	Operator's Manual	



WIRING DIAGRAM

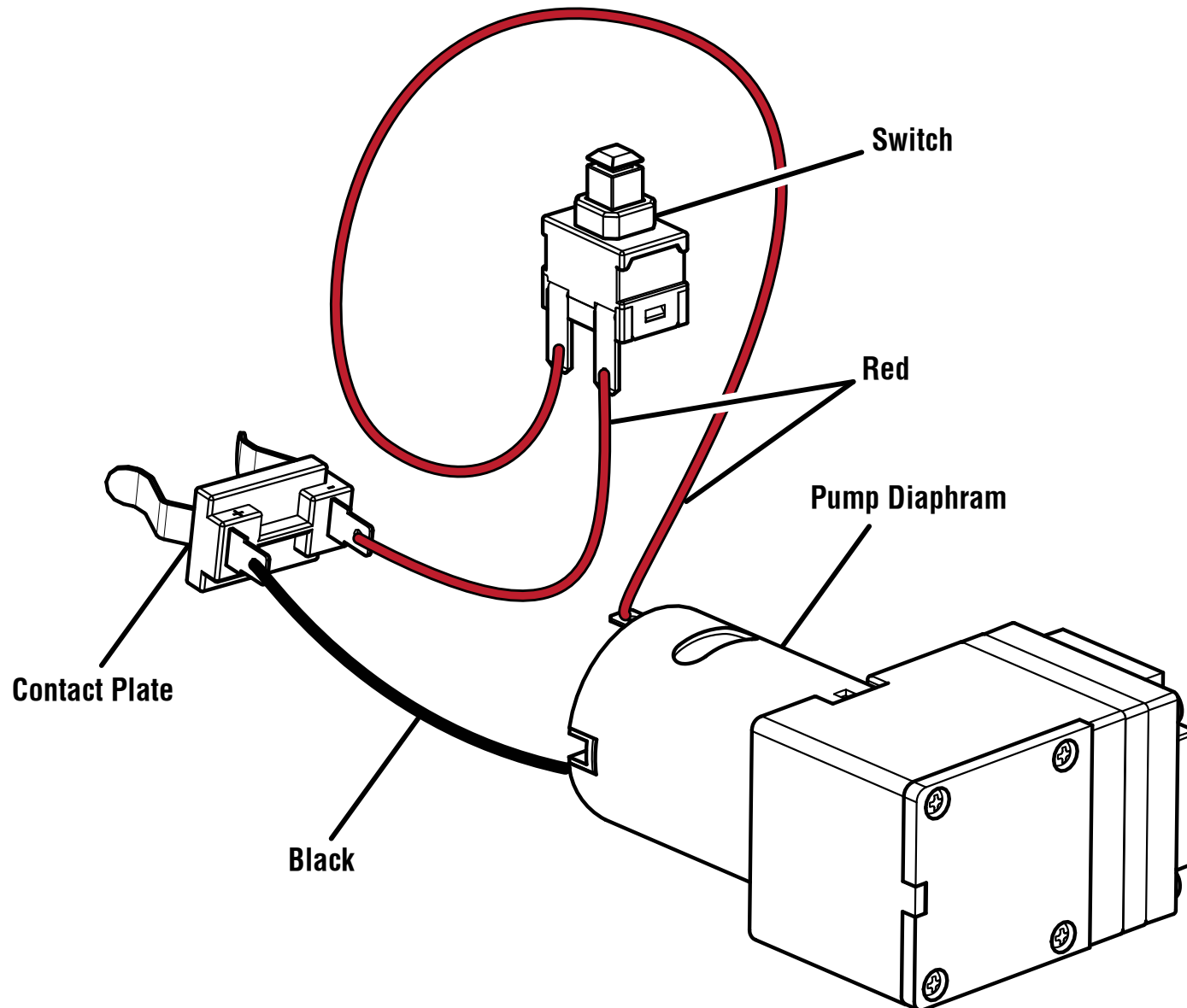
RYOBI
18 VOLT CHEMICAL SPRAYER
ITEM NO. P2800
MANUFACTURING NO. 107270001
REPLACEMENT PARTS LIST



RYOBI 18 Volt Chemical Sprayer – Item No. P2800

The model number will be found on a label attached to the motor housing. Always mention the model number of your **CHEMICAL SPRAYER** when requesting service or ordering repair parts.

KEY NO.	PART NUMBER	DESCRIPTION	QTY
1	311819001	Handle Housing Assembly.....	1
2	313384002	Suction Tube and Filter Assembly	1
3	940851058	Notice Label (B).....	1
4	636345001	Latch	2
5	311818001	Water Tank Assembly	1
6	311822001	Wiring Harness.....	1
7	563916001	Rubber Seal	1
8	311821001	Housing Deck Assembly.....	1
9	660208106	Screw (M4x14 mm).....	15
10	307942003	Pump Diaphragm	1
11	563631001	Tube (long).....	2
12	563640001	O-Ring.....	1
13	528539001	Connector	1
14	563630001	Switch	1
15	563910001	Rubber	1
16	563713001	Rubber Umbrella Pin.....	1
17	528547001	Tank Cap	1
18	307479001	Trigger Handle Assembly.....	1
19	941588086	Data Label.....	1
20	940657177	Warning Icon Label	1
21	940851052	Notice Label (A).....	1
Not Shown:			
	120715001	O-Ring Kit	
	991000645	Operator's Manual	
	3-28-18		
	(Rev:03)		



WIRING DIAGRAM