

CUSTOM HINGE WINDOW WELL COVER

Installation Instructions

What You Will Need

- QTY (2) 1/2" Philips Head Concrete / Lumber Taping Screws
- Prop Rod
- QTY (1) Allen Head Bolt and Nut for each Prop Rod
- Permanent Marker
- Drill (Not Included)
- 3/16" Drill Bit (Not Included)

What You Will Need

1. With section A of the window well cover against the foundation, place the cover centered on top of the window well. (Shown in Fig. 1)
2. With a permanent marker, mark the section of A where the aluminum is centered on the window well. (Shown in Fig. 2)
3. At the marked spot, using a 3/16" drill bit drill through the aluminum hinge and foundation at least 1-1/2" deep.
4. Using the 3/16" screws provided, fasten it into the pre-drilled hole. (Shown in Fig. 3a and 3b)
5. Repeat steps 2-4 on the other side of the window well.

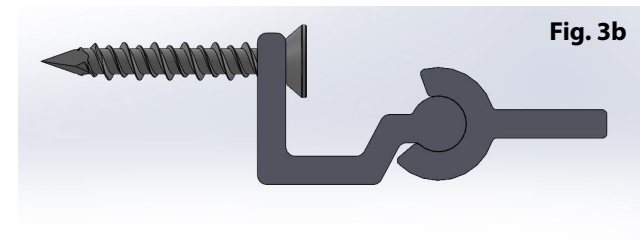
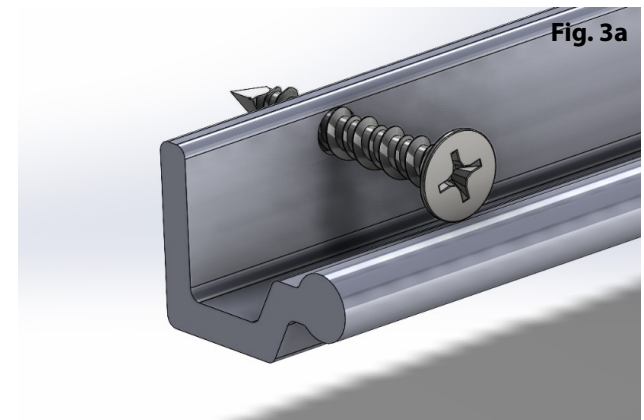
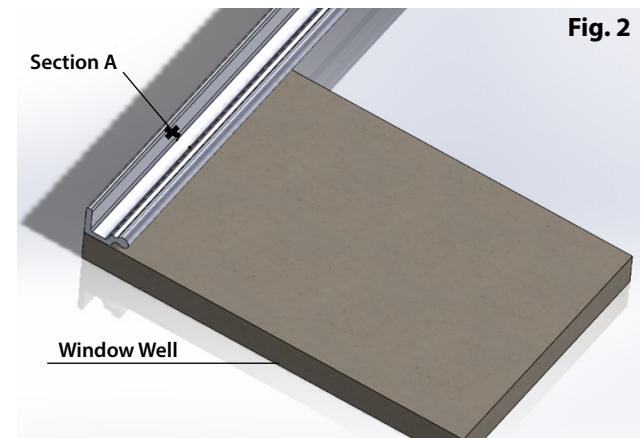
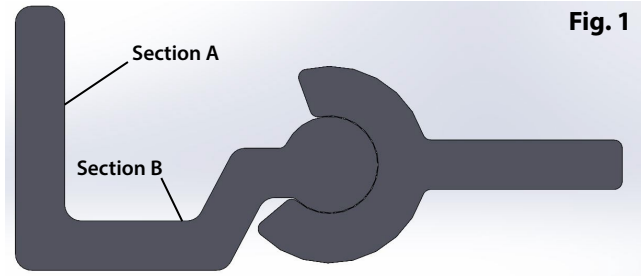
Questions?

If you have questions concerning your installation, please contact Shape Products at (715) 232-0495 or email info@shapeproducts.com



Scan the QR Code for more
resources from Shape Products!

All information, recommendations, or advice given by Shape Products employees or partners, written or oral, is given in good faith and is thought to be accurate and current. It is the responsibility of each product user to ensure the product is used in compliance with current environmental and legal requirements specific to each product application. Shape Products and its partners will not be held liable for incorrect or improper use of its product.



CUSTOM HINGE WINDOW WELL COVER

Thick-Walled Installation Instructions

What You Will Need

- QTY (2) 1/2" Philips Head Concrete / Lumber Taping Screws
- Prop Rod
- QTY (1) Allen Head Bolt and Nut for each Prop Rod
- Permanent Marker
- Drill (Not Included)

Note: If your window well is made of concrete, a concrete drill will be required.

- 3/16" Drill Bit (Not Included)

Note: If your window well is made of concrete, a concrete drill bit will be required.

What You Will Need

1. With section A of the window well cover against the foundation, place the cover centered on top of the window well. (Shown in Fig. 1)
2. With a permanent marker, mark the section of B where the aluminum is centered on the window well. (Shown in Fig. 2)
3. At the marked spot, using a 3/16" drill bit drill through the aluminum hinge and window well at least 1-1/2" deep.
4. Using the 3/16" screws provided, fasten it into the pre-drilled hole. (Shown in Fig. 3)
5. Repeat steps 2-4 on the other side of the window well.

Questions?

If you have questions concerning your installation, please contact Shape Products at (715) 232-0495 or email info@shapeproducts.com



Scan the QR Code for more resources from Shape Products!

All information, recommendations, or advice given by Shape Products employees or partners, written or oral, is given in good faith and is thought to be accurate and current. It is the responsibility of each product user to ensure the product is used in compliance with current environmental and legal requirements specific to each product application. Shape Products and its partners will not be held liable for incorrect or improper use of its product.

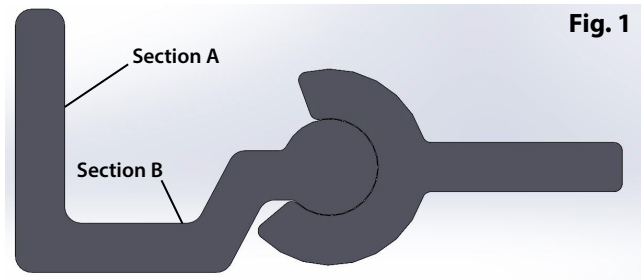


Fig. 1

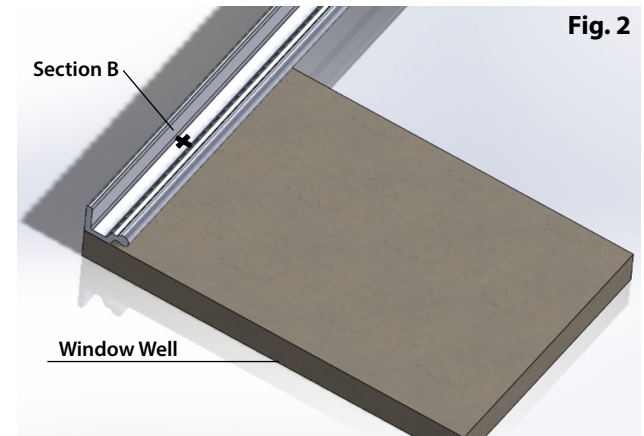


Fig. 2

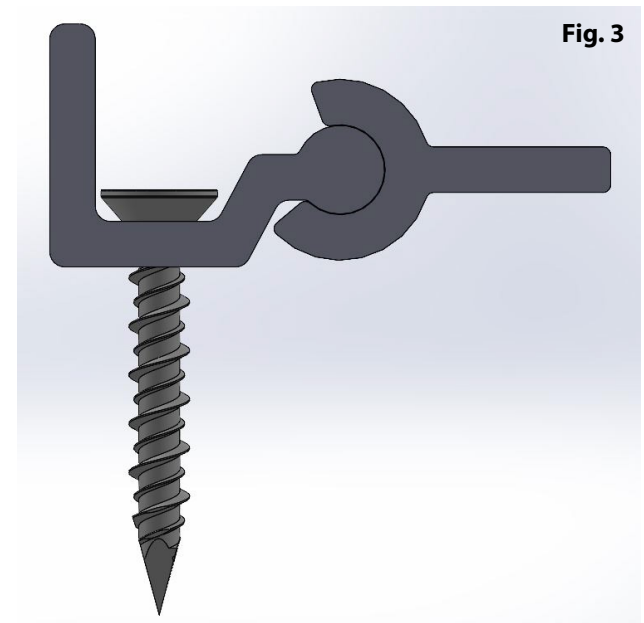


Fig. 3