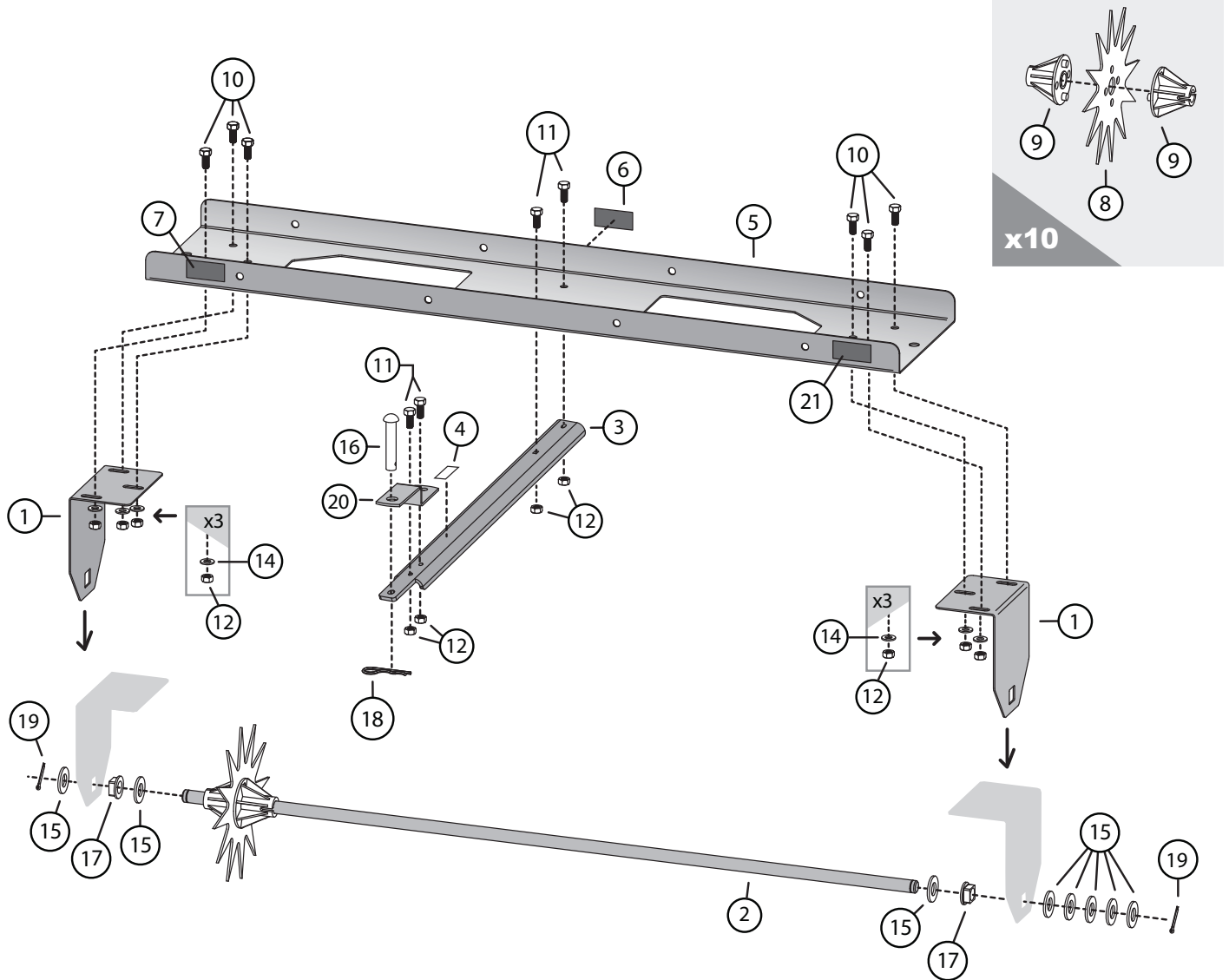


COMPONENT VIEW AND REFERENCE LIST



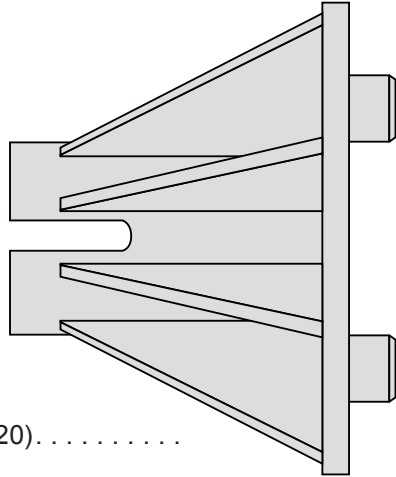
Ref #	Part #	Description	Qty	Ref #	Part #	Description	Qty
1	1018977-16	End Panel	2	14	45M1111P	Washer; Flat, 5/16"	6
2	1018988	Tine Shaft	1	15	45M2121P	Washer; Flat, 5/8"	8
3	1018984-16	Drawbar	1	16	B-3861	Hitch Pin, 1/2" x 2-1/2"	1
4	B-3922	Decal; Caution Aerator	1	17	1019206	Square Bearing	2
5	1018986-16	Tray	1	18	1019151	Hairpin Cotter, 1/8"	1
6	1019088	Decal; Brinly Logo	1	19	1008098	Cotter Pin	2
7	B-7063	Label; Caution Pictorial	1	20	1019260-16	Clevis	1
8	1018833	Tine	10	21	1019245	Label; Serial Number	1
9	B-5425	Bearing	20				
10	2M1012P	Bolt; Hex Head, 5/16 x 3/4	6				
11	2M1016P	Bolt; Hex Head, 5/16 x 1	4				
12	B-4786	Nut; Nylock, 5/16	10				

HARDWARE IDENTIFIER

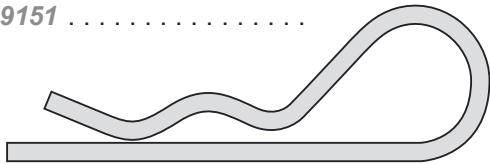
Illustrations on this page are to scale for faster identification of hardware during assembly.

DO NOT RETURN PRODUCT IF YOU ARE MISSING PARTS.

Please Call: 1 (877) 728-8224



9 Bearing (x20).....
B-5425

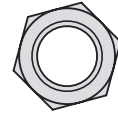


18 Hairpin Cotter, 1/8" (x1)
1019151

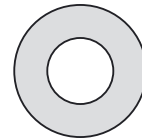


19 Cotter Pin (x2)
1008098

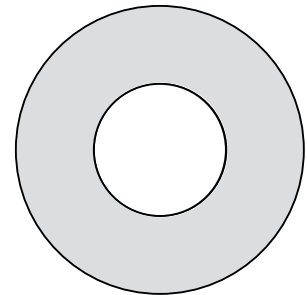
12 Nut: Nylock
5/16" (x10)



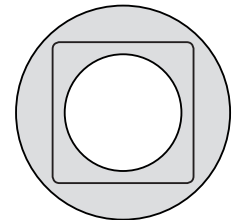
14 Washer: Flat
5/16" (x6)



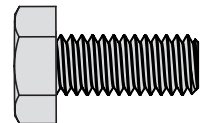
15 Washer: Flat
5/8" (x8)



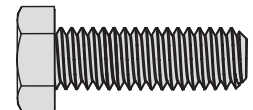
17 Square
Bearing (x2)



10 Bolt: Hex Head, 5/16 x 3/4" (x6)



11 Bolt: Hex Head, 5/16 x 1" (x4)



16 Hitch Pin: 1/2" x 2 1/2" (x1)

