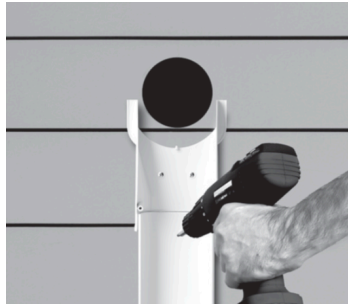


Slim Duct Installation Instructions



1. Determine the path which the lineset will follow and strike a chalk line to mark the surface material. Attach the base of the wall inlet, along the marked path. Pre-drill where necessary. Duct must terminate with a sliding out of position.

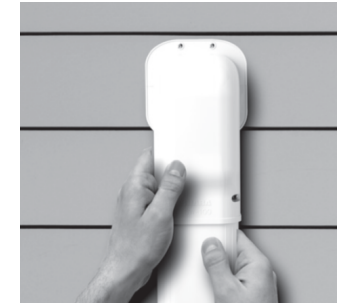


2. Once all ducting bases are secured to the siding, measure and cut the ducting where necessary. Remember for some seasonal expansion and contraction. Install and fasten the ducting bases only through provided punch outs using fasteners of sufficient length (fasteners not included)

3. Continue this with the Unions, Elbow and ducting bases till reach compressor.



4. Install all ACR/communication wires into the bases and secure them with the clips and ties.



5. cover the top of the ducting first by pushing it over the base (make sure it clicks in place, then cover all the inlet, unions and elbow by using the included screws.