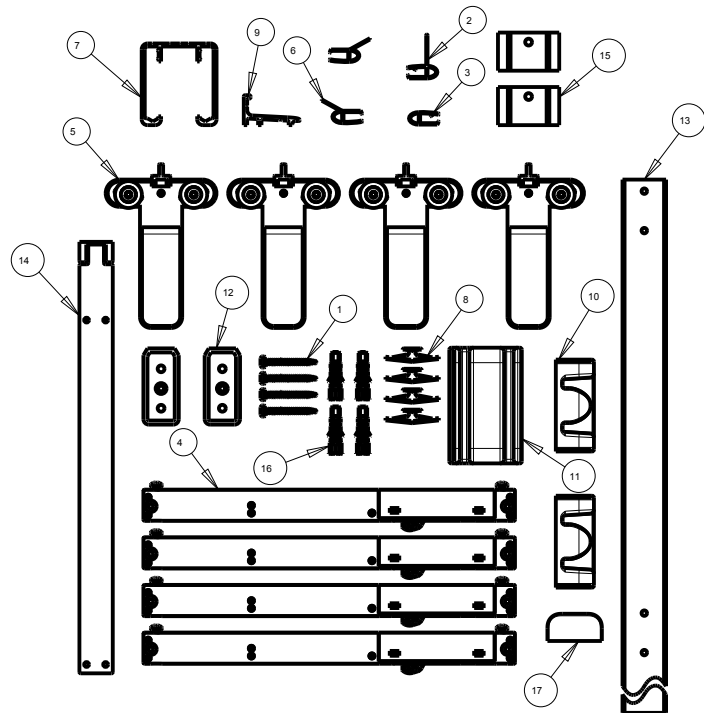


# SHOWER DOOR

# SLIDING MOD STYLE SHOWER TRACK 48-60"



| ID | DESCRIPTION                     | QTY | MATERIAL      |
|----|---------------------------------|-----|---------------|
| 1  | #8-18 X 1.5" LONG PHILLIPS HEAD | 4   | SS            |
| 2  | 6mm Blade Seal                  | 1   | PVC           |
| 3  | 6mm Bumper Seal                 | 1   | PVC           |
| 4  | 6mm Damper                      | 4   | ASSEMBLY      |
| 5  | 6mm Door Roller Assembly        | 4   | ASSEMBLY      |
| 6  | 6mm Outer Angle Blade Seal      | 2   | PVC           |
| 7  | 6mm Top Track                   | 1   | AL6463        |
| 8  | Acrylic Wall Anchor             | 4   | NYLON         |
| 9  | Bottom Track                    | 1   | AL6463        |
| 10 | Bumper                          | 2   | PVC           |
| 11 | Center Divider                  | 1   | NYLON         |
| 12 | Collar Bracket                  | 2   | ZINC DIE CAST |
| 13 | Collar Bracket Template         | 1   | AL6063        |
| 14 | Damper Drilling Template        | 1   | NYLON         |
| 15 | Retention Plate                 | 2   | NYLON         |
| 16 | Tile Wall Anchors               | 4   | PVC           |
| 17 | Trim Cap                        | 1   | PVC           |

**MATERIAL:** Anodized Aluminum Extrusions (Track) and Zinc Die Cast (Mounting Brackets).  
Bronze Finish and Matte Black are Powder Coated.

**INSTALLATION:** Detailed Instructions, Templates and Hardware Included for Easy Installation.

**UNIQUE FEATURE:** Constructed of Corrosion Resistant Anodized Aluminum.  
48" - 60" Track Assembly Kit  
Fits 48" Shower Doors with an Opening min/max of 43 3/8" - 47 3/8" (110cm-120cm),  
with a Height of 71 1/2" (182cm).  
Fits 60" Shower Doors with an Opening min/max of 50 1/8" - 58 1/2" (127cm-149cm),  
with a Height of 71 1/2" (182cm).

**NOTE:** Height of 74" (188cm) Required for installation  
Compatible with all 1/4 inch (6mm) Delta Shower Glass

**WARRANTY:** 5 Year Limited Warranty.

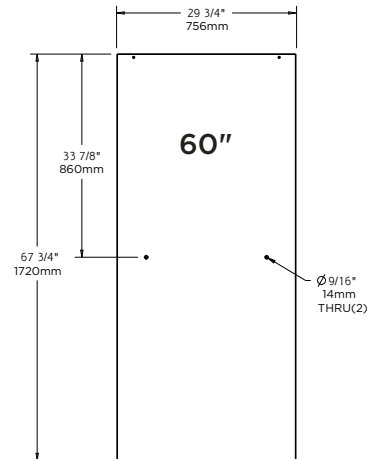
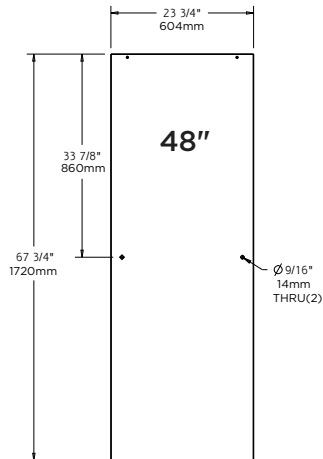


see what Delta can do

# TECHNICAL DATA

## Shower Door

## SLIDING SHOWER 48" & 60" GLASS PANELS



### MATERIALS:

1/4" (6mm) Tempered Glass Panel.

### INSTALLATION:

Detailed Instructions and Hardware Included for Easy Installation.

### UNIQUE FEATURE:

#### Traditional:

48": Fits Doors with an Opening min/max of 43 3/8" - 47 3/8" (110cm-120cm), with a Height of 70" (178cm).

60": Fits doors with an opening min/max of 50 1/8" - 59 3/8" (127cm-151cm), with a Height of 70" (178cm).

#### Contemporary:

48": Fits Doors with an Opening min/max of 43 3/8" - 47 3/8" (110cm-120cm), with a Height of 71" (180cm).

60": Fits Doors with an Opening min/max of 50 1/8" - 58 1/2" (127cm-149cm), with a Height of 71" (180cm).

#### Mod:

48": Fits Doors with an Opening min/max of 43 3/8" - 47 3/8" (110cm-120cm), with a Height of 74" (188cm).

60": Fits Doors with an Opening min/max of 50 1/8" - 58 1/2" (127cm-149cm), with a Height of 74" (188cm).

### WARRANTY:

5 Year Limited Warranty.

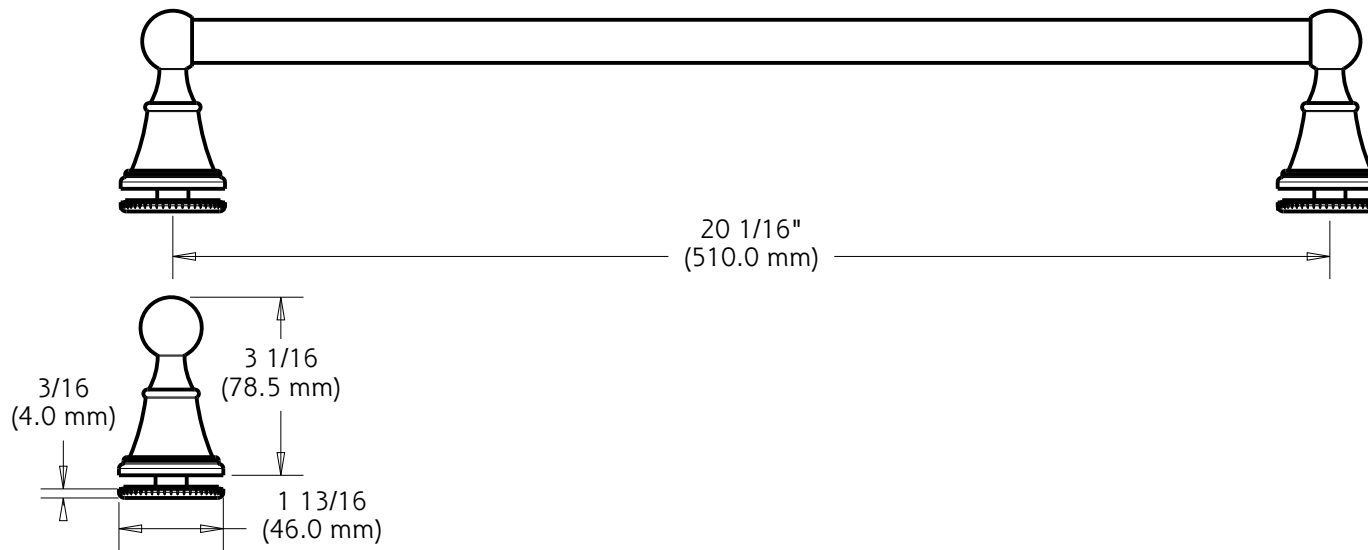


see what Delta can do™

# TECHNICAL DATA

## Shower Door

## CRESTFIELD™ HANDLE



- MATERIALS:** Zinc Posts for all  
Aluminum Bar: Brushed Nickel, Oil Rubbed Bronze.  
Stainless Steel Bar: Polished Chrome.
- INSTALLATION:** Detailed Instructions and Hardware Included for Easy Installation.
- UNIQUE FEATURE:** Coordinates with Delta® Faucets and Bath Hardware.  
Compatible with All Delta® Sliding Bathtub or Shower Doors.
- WARRANTY:** 5 Year Limited Warranty.

