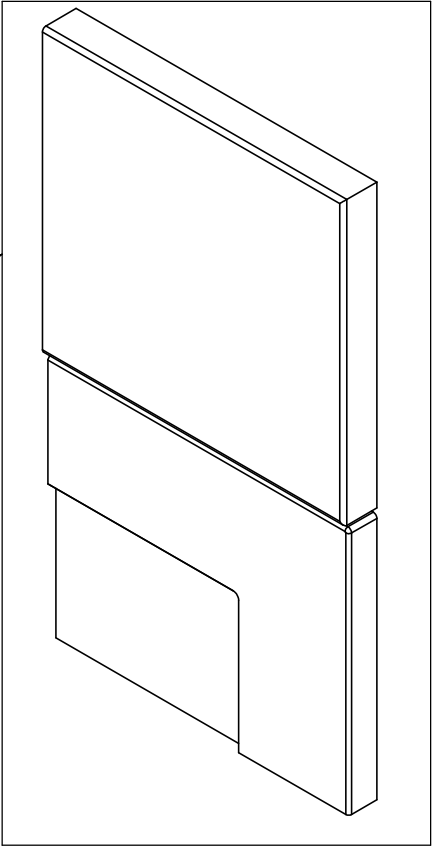
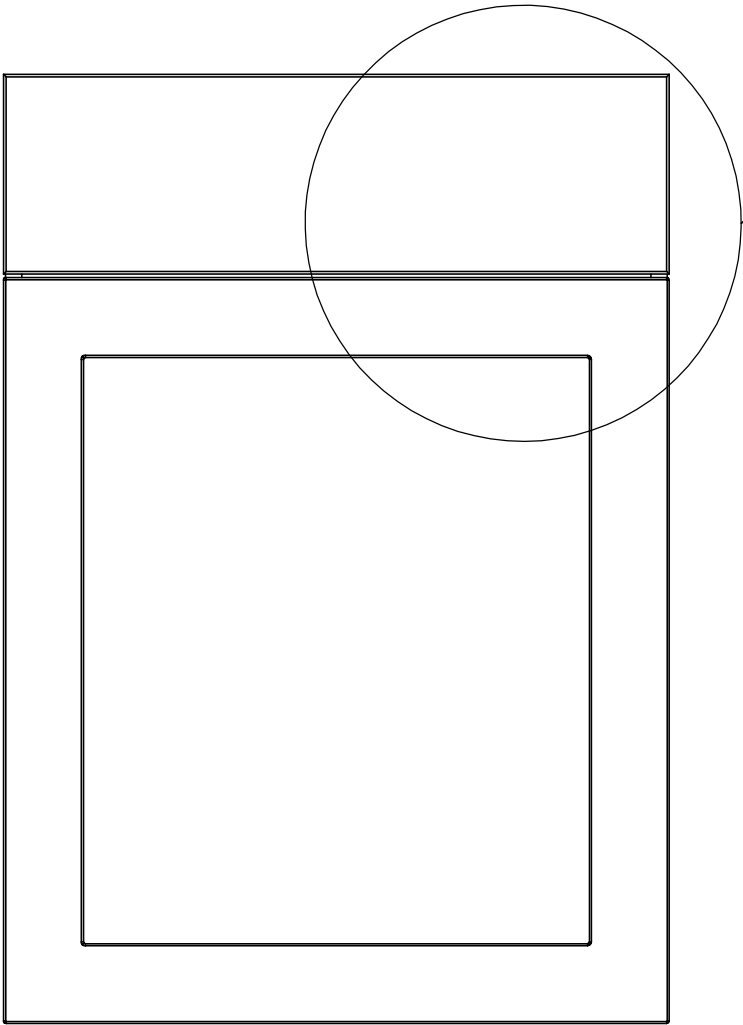


Item ID	Front Thickness [in] mm	Door Thickness [in] mm
CM2135B-WH	[.63] 16	[.63] 16

This profile
belongs to
CM2135B-WH



Detailed View

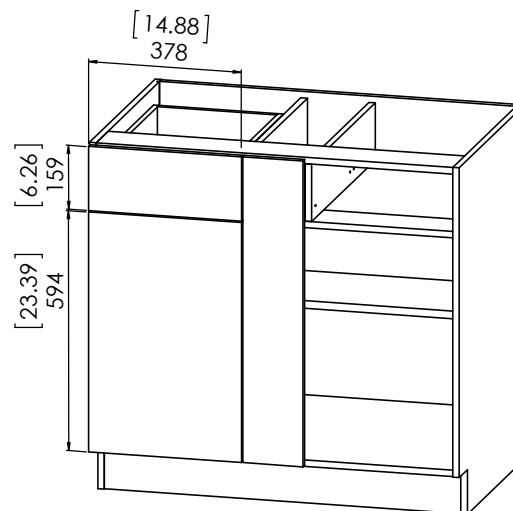
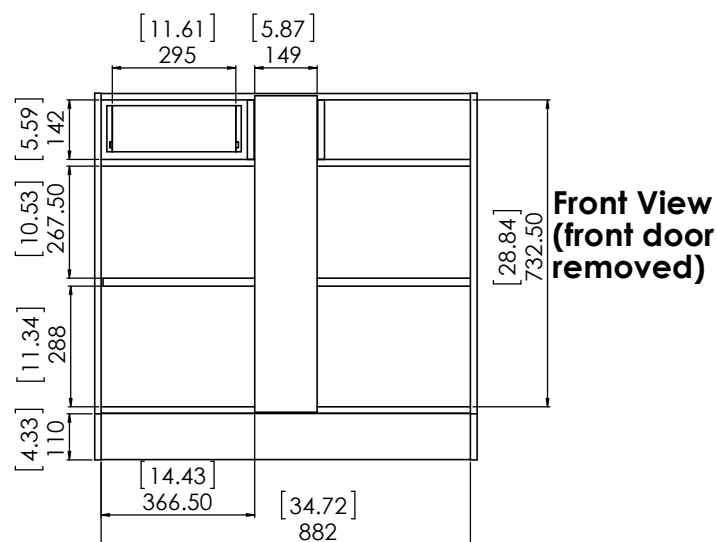
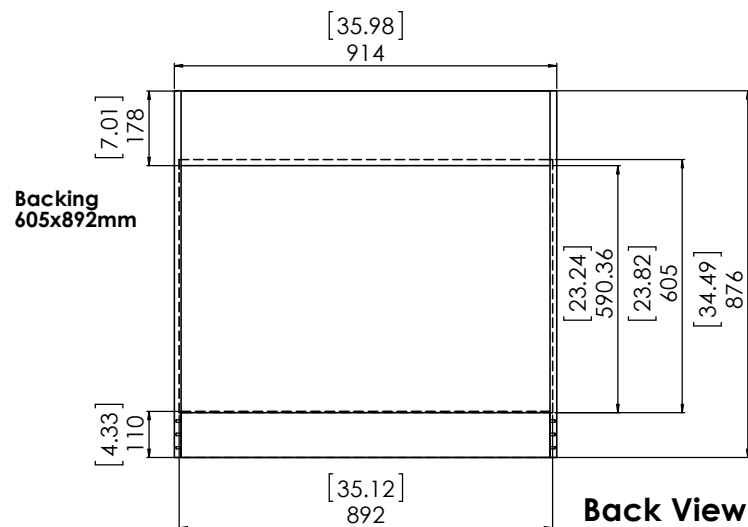
Profile: Cambridge White & Kitchen Gray

PROPRIETARY AND CONFIDENTIAL
THE INFORMATION
CONTAINED IN THIS DRAWING
IS THE SOLE PROPERTY OF
WOODCRAFTERS. ANY
REPRODUCTION IN PART OR
AS A WHOLE WITHOUT THE
WRITTEN PERMISSION OF
WOODCRAFTERS IS
PROHIBITED.

UNLESS OTHERWISE
SPECIFIED
DIMENSIONS ARE IN
MM AND [INCHES]
TOLERANCES ARE
+.039[1]-.039[1]
SCALE:1:2



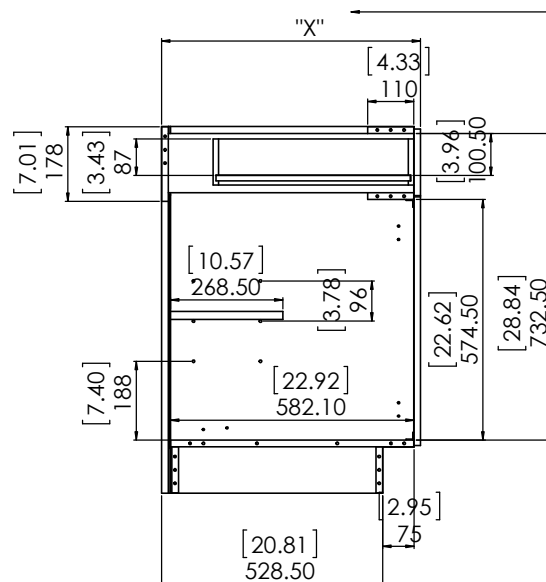
Item ID	Shelf Thickness [in] mm		Shelf Length and Width [in] mm	Depth "X" [in] mm	
BT3635L-BT	.75	19	[34.57x10.57] 878x268.50	[24.6]	[625.5]
BT3635L-WH	.75	19		[24.5]	[622.5]
BT3635L-RC	.75	19		[24.6]	[625.5]
CM3635L-DK	.75	19		[24.6]	[625.5]
CM3635L-WH	.59	15		[24.5]	[622.5]
EH3635L-GB	.17	19		[24.6]	[625.5]
CM3635L-KG	.17	19		[24.5]	[622.5]




Isometric View

Depth "X" depends on door profile

Side View
(left panel removed)



Description					
Kitchens- Blind Base Corner Cabinet 36W x 35H					
REV	ECO#	Description	REV'D BY DATE	CHK'D BY DATE	APRV'D BY DATE

NAME	SIGNATURE	DATE		
DRAWN	Mark Flores	8/16/17		
CHK'D				
APPV'D				
MFG			CORNER_Cabinet_36in SCALE: 1:10 SHEET 1 OF 1	
PROPRIETARY AND CONFIDENTIAL THE INFORMATION CONTAINED IN THIS DRAWING IS THE SOLE PROPERTY OF WOODCRAFTERS. ANY REPRODUCTION IN PART OR AS A WHOLE WITHOUT THE WRITTEN PERMISSION OF WOODCRAFTERS IS PROHIBITED.			UNLESS OTHERWISE SPECIFIED DIMENSIONS ARE IN MM. AND (INCHES) TOLERANCES ARE +/- 1[0.039] SCALE: 1:5	