

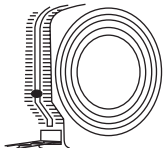
WESTBRASS

Fine Decorative Plumbing Since 1935

D98R

Integral Tip-Toe Drain Assembly Ensamblaje Integral de Desagüe con Punta

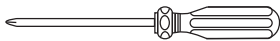
YOU MAY NEED: USTED PUEDE NECESITAR:



Tape measure
Cinta métrica



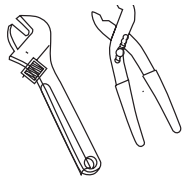
PTFE Tape
Cinta PTFE



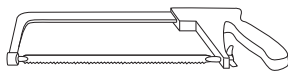
Screwdriver
Destornillador



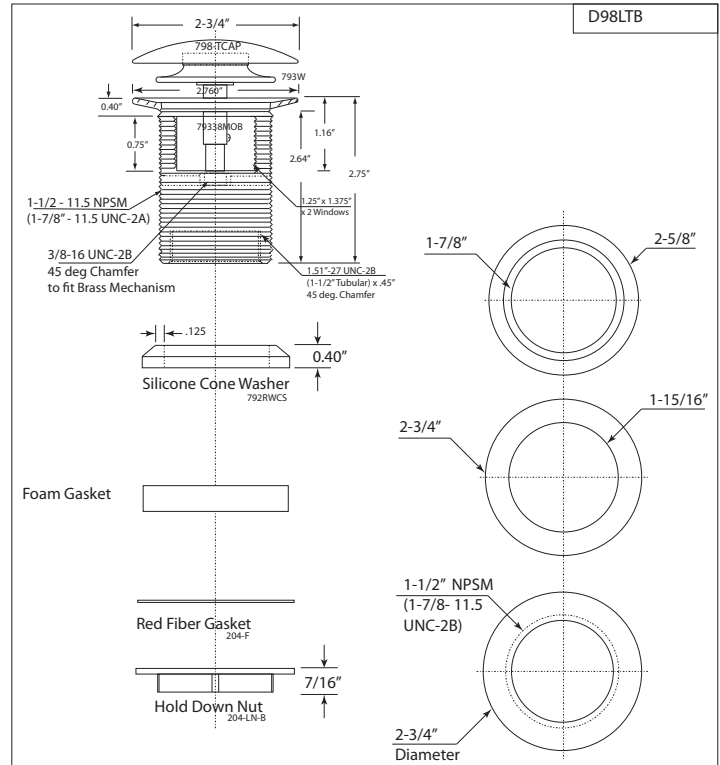
Silicone Sealant: Use Silicone sealant under base of strainer.
Sellador de silicón: Si el lavamanos está desnivelado use sellador de silicón debajo de la base del borde.



Pliers: For removal and installation.
Alicates: Para quitar y instalación.

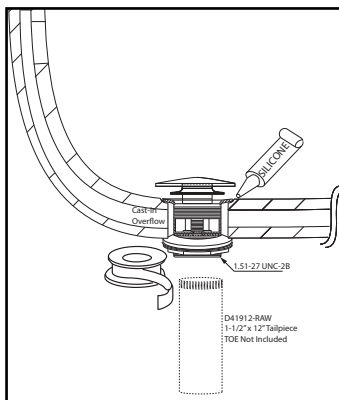
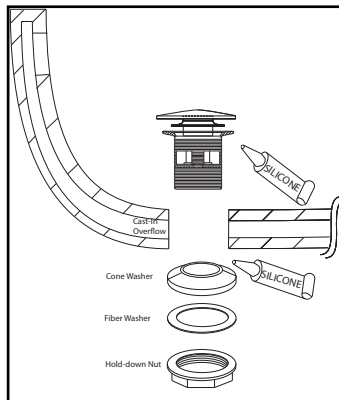


Hacksaw
Sierra



Installation Instructions

1. Place a bead of silicone under the rim of the overflow.
2. Place a bead of silicone on the tapered side of the cone-shaped washer.
3. While holding the overflow firmly inside the tub, push the washer onto the tub until the silicone meets the tub.
4. Place the fiber washer against the rubber washer, then thread on the nut until the drain is held tight against the tub. Clean up excess silicone.
5. Wrap a 1-1/2" threaded one end tailpiece with PTFE tape and thread into bottom of drain. Tube Not Included With Kit. Available as D41912 from Westbrass. Thread into P-Trap.
6. Check for leaks.



Instrucciones de Instalación

1. Coloque un cordón de silicona de silicona bajo el borde del rebosadero.
2. Coloque un cordón de silicona en el lado cónico de la arandela en forma de cono.
3. Mientras sujeta el desbordamiento firmemente dentro de la bañera, empuje la lavadora en la bañera hasta que la silicona se encuentre con la bañera.
4. Coloque la arandela de fibra contra la arandela de goma, luego enrosque la tuerca hasta que el drenaje esté sujeto firmemente contra la bañera.
5. Envuelva un extremo de 1-1/2 in. roscado con una cinta de PTFE y rosca en la parte inferior del desagüe. Tubo no incluido con el kit. Disponible como D41912 de Westbrass. Hilo en la trampa-P.
6. Compruebe si hay fugas.

CARE & MAINTENANCE

With the exception of living finishes, all Westbrass decorative finishes are protected by the strongest finish treatments available while maintaining their luxurious appearance. While some finishes are more durable than others, no finish is indestructible. Polished Chrome, Satin Nickel and PVD Polished Brass finishes are the most durable. All other finishes are electroplated; some are then coated to enhance the gloss and durability.

TO CLEAN:

Do not allow your product to come into contact with any cleansers fortified with ammonia, bleach, grease-cutters or other surfactant chemicals. Soft Scrub, Dawn Liquid Soap, Palmolive or any other combined cleaners contain certain chemical components that will dissolve and remove the finish's protective coating, and eventually the finish itself. Use only plain warm water and mild soap on a soft cloth or sponge. Avoid using any sponge with a scouring pad to clean your product. It is not necessary to rub hard to remove spots.

TO PROTECT:

An occasional application of Carnauba wax (without cleaners), like that found in Flitz Faucet Wax, Turtle Wax for Clear Coat Car Finishes or McGuire's Premium Wax, will enhance the finish lustre, reduce hard water spots and add an extra layer of protection to your finish.

WARRANTY

Finishes:

All sink and tub/shower drains, strainers and other trims have a 1 year warranty

Functional Warranty:

The functionality of all products is warranted for a period of one year. Ceramic disc valves on any water delivery merchandise are warranted for one year. Warranties are guaranteed to the original purchaser only. Product problems attributable to abuse, misuse, improper installation, hard water, neglected maintenance or accidental damage are not covered by this warranty. Modifying the product in any way voids the warranty. The use of plumber's putty on our products also voids the warranty. Silicone

sealing compounds should be used instead. No repairs or replacements will be made under such circumstances except at customer's expense. Liability under warranties expressed or implied is limited to repair or replacement of defective goods only. In no event will Westbrass be liable for incidental or consequential damages (such as labor charges). This warranty does not cover labor charges, whether based on breach of express or implied warranty, breach of contract, negligence or any other legal theory.