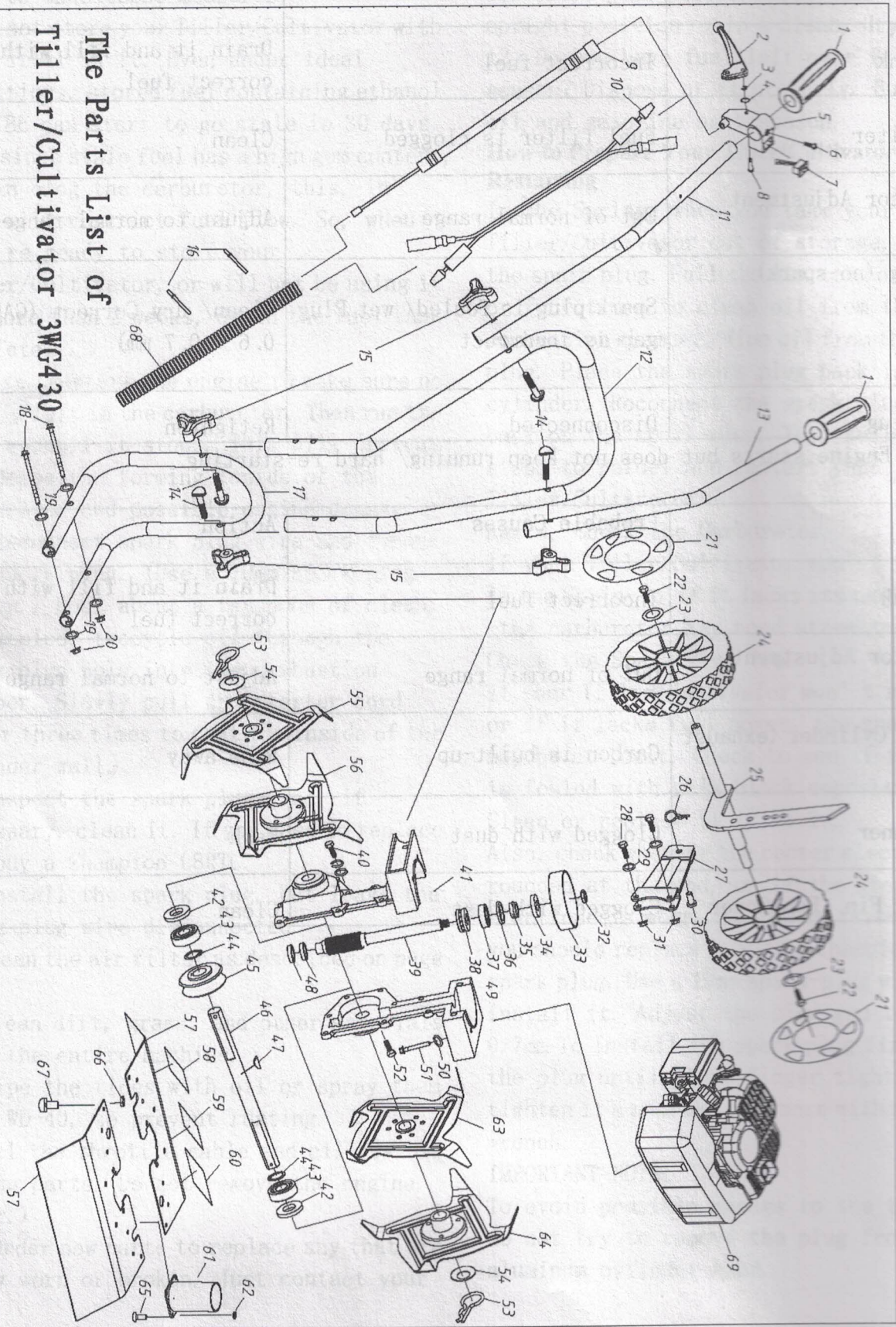


**Parts List
Tiller/Cultivator Assembly**

**The Parts List of
Tiller/Cultivator 3WG430**

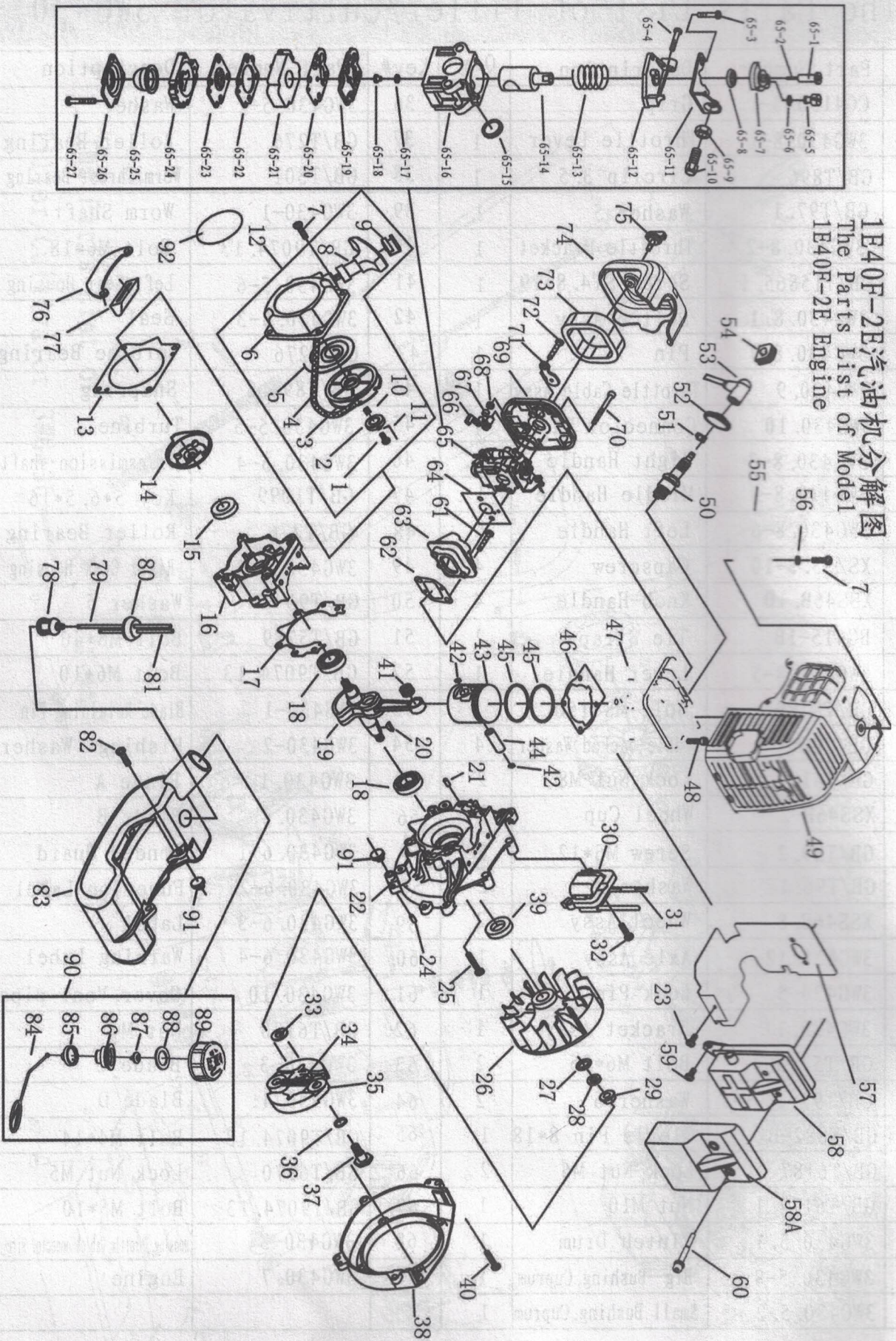


The Parts List of Tiller/Cultivator 3WG430

Key#	Part Number	Description	Qty	Key#	Part Number	Description	Qty
1	CG415D. 3-1	Grip	2	36	3WG430. 5-2	Washer	1
2	3WG430. 8-1	Throttle Lever	1	37	GB/T276	Roller Bearing	1
3	GB/T896	Circlip 3.5	1	38	GB/T301	Worm Thrust Bearing	1
4	GB/T97. 1	Washer 5	1	39	3WG430-1	Worm Shaft	1
5	3WG430. 8-2	Throttle Bracket	1	40	GB/T9074. 13	Bolt M6*18	6
6	GB/T15865. 1	Screw ST4. 8*19	1	41	3WG430. 5-6	Left Gear Housing	1
7	3WG430. 8. 1	Switch Assy	1	42	3WG430. 5-3	Seal	2
8	3WG430. 8-7	Pin	1	43	GB/T276	Turbine Bearing	2
9	3WG430. 9	Throttle Cable Assy	1	44	GB/T894. 1	Snapring	2
10	3WG430. 10	Connector Wire	1	45	3WG430. 5-5	Turbine	1
11	3WG430. 8-3	Right Handle	1	46	3WG430. 5-4	Transmission shaft	1
12	3WG430. 8-4	Middle Handle	1	47	GB/T1099	Key 5*6. 5*16	1
13	3WG430. 8-6	Left Handle	1	48	GB/T276	Roller Bearing	2
14	XSZ53. 3-10	Capscrew	4	49	3WG430. 5-7	Right Gear Housing	1
15	XSS46B. 10	Knob-Handle	4	50	GB/T93	Washer 6	4
16	BG415-1B	Tie Strap	2	51	GB/T5789	Bolt M6*40	4
17	3WG430. 8-5	Lower Handle	1	52	GB/T9074. 13	Bolt M6*10	2
18	GB/T8789	Bolt M8*150	2	53	3WG430-1	Blade Retaining Pin	2
19	GB/T860	Saddle-backed Washer	4	54	3WG430-2	Dishing Washer	2
20	GB/T6187	Lock Nut M8	2	55	3WG430. 1	Blade A	1
21	XSS46B-2	Wheel Cup	2	56	3WG430. 2	Blade B	1
22	GB/T29. 2	Screw M6*12	2	57	3WG430. 6-1	Fender Guard	2
23	GB/T96. 1	Washer 6	2	58	3WG430. 6-2	Function Label	1
24	XSS46B. 8	Wheel Assy	2	59	3WG430. 6-3	Label	1
25	3WG430. 12. 1	Axle Assy	1	60	3WG430. 6-4	Warning Label	1
26	3WG430-5	Lock Pin	1	61	3WG430. 10	Cover, Vent-pipe	1
27	3WG430. 11	Bracket Assy	1	62	GB/T6170	Nut M4	4
28	GB/T5786	Bolt M6*25	2	63	3WG430. 3	Blade C	1
29	GB/T97	Washer 6	2	64	3WG430. 4	Blade D	1
30	GB/T882-B	Clevis Pin 8*18	1	65	GB/T9074. 13	Bolt M4*14	4
31	GB/T6187	Lock Nut M6	2	66	GB/T6170	Lock Nut M5	2
32	GB/T6172. 1	Nut M10	1	67	GB/T9074. 13	Bolt M5*10	2
33	3WG430. 5. 1	Clutch Drum	1	68	3WG430-3	Housing, Throttle Cable&Connector Wire	1
34	3WG430. 5-8	Big Bushing, Cuprum	1	69	3WG430. 7	Engine	1
35	3WG430. 5. 2	Small Bushing, Cuprum	1				

1E40F-2E汽油机分解图

The Parts List of Model 1E40F-2E Engine



序号 NO.	代号 Part No.	名称 Part Name	数量 Qty.	序号 NO.	代号 Part No.	名称 Part Name	数量 Qty.	序号 NO.	代号 Part No.	名称 Part Name	数量 Qty.	序号 NO.	代号 Part No.	名称 Part Name	数量 Qty.
1	1E36FE-9-3	螺钉 Screw	1	32	GB70+GB93+GB97	螺钉组合件M5×20 Bolt M5×20	2	62	1E40-5-2	进气管 Gasket	1	66	1E34F-1-2	阻风门手柄 Choker Handle	1
2	1E36FE-9-4	起动机 Ratchet	1	33	1E36F-3	垫圈B Washer-B	2	63	HA46.9	进气管 Admitting Pipe	1	67	1E34F-1-7	止逆阀 Stop ring	1
3	1E36FE-9-1	绳轮 Starter Rope Reel	1	34	1E36F-E-6B-1	弹簧 Spring	1	64	1E40-5A-1	化油器 Gasket	1	68	GB/T6170	螺母M4 Nut M4	1
4	1E36FE-9-5	起动机绳 Starter Rope	1	35	1E36F-E.6B	涨紧块 Expander	2	65	1E40F-2E.1A	化油器 Carburetor	1	69	1E34F-1.1	空滤器内罩 Cleaner inside cover	1
5	1E36FE-9-7	起动机弹簧 Recoil Spring	1	36	1E40F-5-11	波形垫圈 Washer	2	65-1		王童针套 Carburetor	1	70	GB70.1+GB97	螺钉组合M5X50 Screw M5x50	2
6	1E36FE-9-8	壳体 Starter Cover Ass'y	1	37	P40-18	螺钉轴 Screw Pin	2	65-2		主量针 Main Needle	1	71	1E34F-1-3	阻风门 Choker	1
7	GB9074.4	螺钉组合件M5×20 Screw M5×20	5	38	1E40F-5-9	磁电机罩壳 Fan Cover	1	65-3		油门调节螺钉 Main Needle	1	72	GB/T845	自攻螺钉 ST4.2X12 Screw ST4.2X12	1
8	1E40FP-3Z.4-2	起动机手柄 Start Handle	1	39	1E40F-5.9	大油封 Oil-seal	1	65-4	GB/7823	螺钉M3×10 Screw M3×10	2	73	1E34F-1-1	滤芯 Filter Net	1
9	1E40FP-3Z.4-10	增强套 Ring	1	40	GB70+GB93+GB97	螺钉组合件M5×25 Screw M5×25	2	65-5		挂线轴 Screw	1	74	1E36F-E-7-1	空滤器外罩 Cleaner Outside Cover	1
10	1E36FE-9-6	压簧 Spring	1	41	1E44F-2A.2-3	小头滚针轴承 Bearing	1	65-6	GB896	开口垫圈 3.5 Ring 3.5	1	75	1E34F-1.2	大头螺钉 Screw	1
11	1E36FE-9-2	起动机扳杆 Start pole	2	42	P40.6-4	活套销挡环 Ring	2	65-7		油架 Turn Frame	1	76	1E36F-E-5	油箱挂架 Stand	1
12	1E36FE-9	起动机 Starter	1	43	1E40F-E-4-1	活套 Piston	1	65-8		密封圈 Airproof Ring	1	77	1E40F-5A-2	橡胶套 Rubber Cover	1
13	1E40F-5-10	起动机垫 Gasket	1	44	1E46FP-6-3	活套销 Piston Pin	1	65-9	GB/76172	螺母M6 Nut M6	1	78	P40.12.2-3A	燃油过滤器 Cleaner Cover	1
14	1E36FE-7	起动机盘焊合 Start Reel	1	45	1E40FP-3Z.3-5	活套环 Piston Ring	2	65-10		挂线调节螺帽 Nut Adjuster	1	79	CG420.1.3.2-2	橡胶管 Fuel Pipe	1
15	1E36F-2	小油封 Oil-seal	1	46	1E40F-E-3	缸套 Gasket	1	65-11		固定板 Bracket	1	80	EB-415.4.2-2	油管胶塞 Plug	1
16	1E40F-E-6-2	后手曲轴箱 Crank Case	1	47	1E40F-2E-1	缸体 Cylinder	1	65-12		固定板 Bracket	1	81	EB-415.4.2-4	橡胶管 Fuel Pipe	1
17	1E40F-5.8-4	曲轴箱密封垫 Gasket	1	48	GB/T70.1	内六角螺钉M5×20 Screw M5×20	4	65-13		扭簧 Spring	1	82	GB70.1+GB93+GB96	螺钉组合件M5x16 Screw M5×16	2
18	GB/T726	轴承 6202/P6 Bearing 6202/P6	2	49	1E40F-E.5	缸体护罩组合 Guide Cover Ass'y	1	65-14		柱套 Column	1	83	1E40F-HS.5.1	油箱 Fuel Tank	1
19	1E40F-E.4.1A	曲轴连杆组 Crank Shaft	1	50	L8RTC	火花塞 Spark Plug	1	65-15		密封垫 Ring	1	84	1E32FL.6.2-4	防酸链 Chain	1
20	GB1099	手圆键 3×5×13 Key 3x5x13	1	51	1E40F-3A.8-2	火花塞干簧 Spring	1	65-16		上壳体 Overbody	1	85	1E32FL.6.2-3	罩盖 End Cover	1
21	GB119	销 4h8×10 Pin. 4h8×10	2	52	1E34F-5-3	火花塞塞 Plug Cap	1	65-17		0形圈 O Ring	1	86	1E32FL.6.2-2	油箱内盖 Inside Cover	1
22	1E40F-E.6-1	前半曲轴箱 Crank Case	1	53	1E34F-5-2	高/低帽 CAP	1	65-18		中壳体 Pintole	1	87	EB-415.4.1.1-1	进气嘴 Inlet	1
23	GB70+GB93+GB97	螺钉组合件M4×12 Screw M4×12	1	54	1E40F-5.3-1	胶塞 Plug	1	65-19		中壳体材料片 Gasket, Pump	1	88	CG420.1.3.1-2	密封垫 Gasket	1
24	GB119	销 4h8×10 Pin. 4h8×10	2	55	1E40F-E-4	上底盖 Cover	1	65-20		中壳体片 Diaphragm, Pump	1	89	1E32FL.6.2-1	油箱盖 Fuel Tank Lid	1
25	GB/T70.1	内六角螺钉M5×30 Screw M5×30	4	56	1E36F-2C-1	隔热垫(二) Gasket	1	65-21		中壳体 Mid-body	1	90	1E32FL.6.2	油箱盖组合 Lid Ass'y	1
26	HA46.2.1.1	磁电机转子 MAGNETO ROTOR COMP.	1	57	1E40F-E-2	消音器垫 Gasket	1	65-22		下壳体密封片 Gasket Diaphragm	1	91	1E40F-5A-3	橡胶垫 Rubber washer	2
27	GB/T8559	垫圈B Washer-B	1	58	1E40F-2E.2	消音器组 Muffler	1	65-23		吸油膜片部件 Diaphragm	1	92	1E36F-2-10	标签 Label	1
28	GB/T97.1	垫圈B Washer-B	1	58A	1E40F-E-6	隔热垫 Cover	1	65-24		下壳体 Body Part	1				
29	GB6170	螺母M8 Nut M8	1	59	GB70+GB93+GB97	螺钉组合件M5×12 Screw M5×12	2	65-25		油杯 Pump Priming	1				
30	1E40F-E.3.1-2	磁电机定子 IGNITION COIL COMP.	1	60	GB70+GB97	螺钉组合件M6×60-12.9 Screw M6×60-12.9	2	65-26		下压板 Cover Pump	1				
31	1E36F-2.3.1	停车线组 Cord Comp.	1	61	GB70+GB93+GB97	螺钉组合件M5×25 Screw M5×25	2	65-27	GB/T818	螺钉M3×22 Screw M3×22	4				