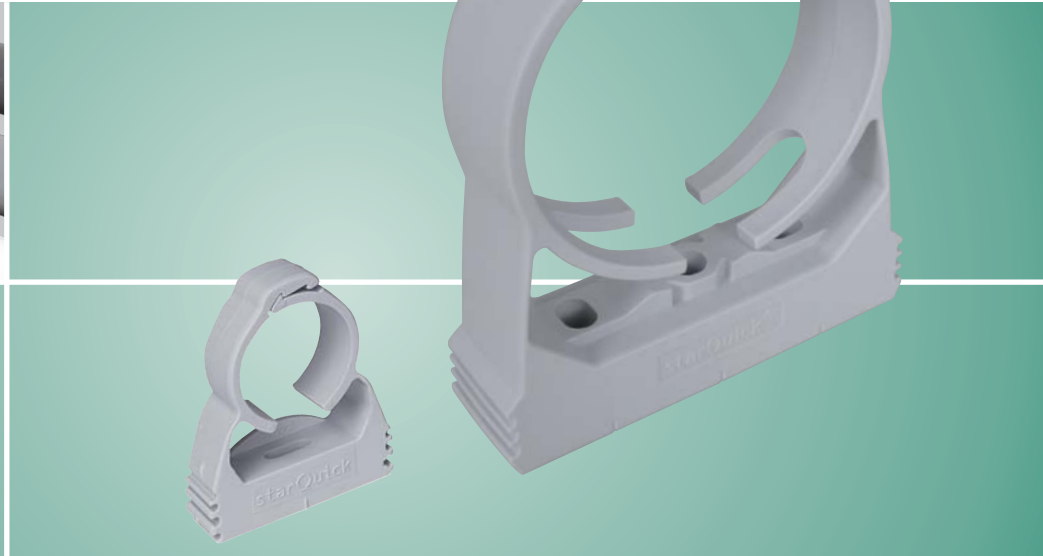


BIS starQuick®



Maximum installation flexibility

- Full range of installation systems available
- Self-locking
- Patented design
- Largest pipe range available 1/4" - 4"
- UV-stabilized engineered polymer
- Corrosion-free
- ASTM E-84 - plenum rated



BIS starQuick®

Quick, easy and reliable!

1. Place pipe into clamp



2. Push pipe to fix and lock



Quick, easy and reliable!

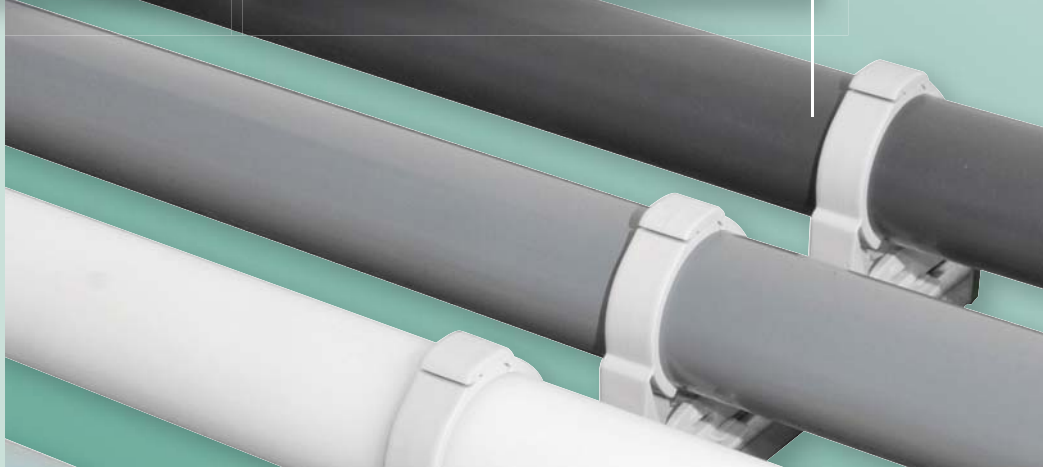
BIS starQuick® Clamps guarantee a reliable and time-saving pipe fitting. The BIS starQuick® Clamp is self-locking: the clamp closes when the pipe is pushed into it!

The BIS starQuick® System contains clamps for fitting all types of pipe, from 1/4" through 4" BIS starQuick® Clamps are suitable for plumbing, heating and electrical installations.

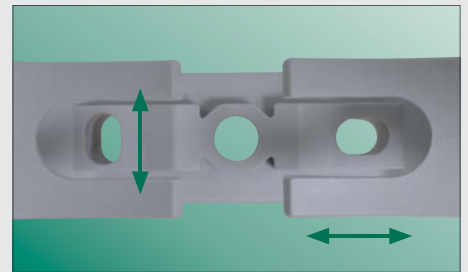
The BIS starQuick® range offers all kind of smart solutions for fitting two or more parallel running pipes, pipe work to metal rail and pipe work to threaded rods.

Features and benefits

- Clamp closes by applying pressure to the pipe
- For full range of pipes sizes from 1/4" - 4"
- For plumbing, heating and electrical installations
- Can be used in highly corrosive environments
- Temperature resistance -40°F to 200°F
- UV stabilized
- High resistance to many chemicals
- ASTM E-84 - plenum rated



New Large Dimension BIS StarQuick® 2 1/2, 3 and 4"



Easy to install



Mounts to strut using common accessories **R**

A complete range

For all situations

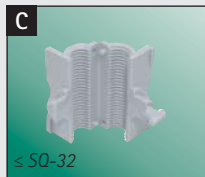


State of the art material

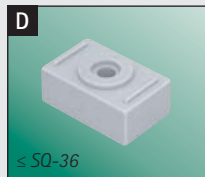
BIS starQuick® products are made from UV-stabilized polyamid PA6. This state of the art material offers a wide temperature range and has a high resistance to many chemicals. Halogen free and fully recyclable.



085 4 000 (grey)



085 4 359 (½)



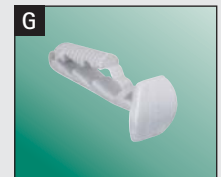
085 4 510



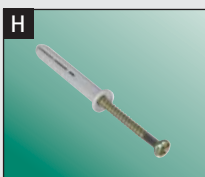
085 4 316 (150 mm)
085 4 325 (1 m)



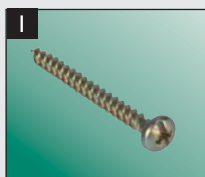
085 4 313
(For BIS starQuick® Rail)



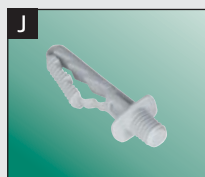
085 4 314
(For BIS starQuick® Rail)



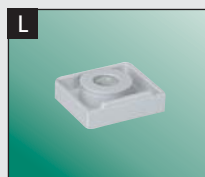
085 4 301



085 4 302



610 1 063 (M6)



SQ 085 4 006 (M6, grey)
SQ 085 4 308 (M8, grey)



SQ 085 4 337 (1/4")



085 4 348 (M8)



085 4 332



085 4 001 (½)



SQ 085 4 002 ¾"
SQ 085 4 003 ½"
For 2½", 3" and 4" Clamps only

BIS starQuick®

BIS starQuick® Clamps



Type	Part No.	D (mm)	IP (")	CT (")	Box
SQ-10	085 4 010	10 - 12	-	1/4	100
SQ-12	085 4 012	12 - 14	1/4	3/8	100
SQ-15	085 4 015	14 - 16	-	1/2	100
SQ-17	085 4 018	16 - 20	3/8	5/8	100
SQ-20	085 4 022	20 - 23	1/2	3/4	50
SQ-25	085 4 028	24 - 28	3/4	-	50
SQ-28	085 4 031	28 - 32	-	1	50
SQ-32	085 4 035	32 - 35	1	1 1/4	50
SQ-36	085 4 038	35 - 40	-	-	25
SQ-40	085 4 042	40 - 44	1 1/4	1 1/2	25
SQ-47	085 4 050	44 - 50	-	-	25
SQ-51	085 4 054	48 - 55	1 1/2	2	15
SQ-59	085 4 063	59 - 65	2	-	15
SQ-75	085 4 1075	71 - 76	2 1/2	-	50
SQ-90	085 4 1090	88 - 93	3	-	40
SQ-110	085 4 1110	109 - 114	4	-	25

BIS starQuick® Accessories



	Part No.	Product	Box
A	085 4 000	Duo Bracket 2"	100
C	085 4 359	Threaded Rod Adaptor 3/8"	25
D	085 4 510	Distance Block 3/8"	25
E	085 4 316	Rail 6"	50
	085 4 325	Rail 3'3"	25
F	085 4 313	Adaptor for SQ Fixing Rail	20
G	085 4 314	Rail Plug 1.2"	50
H	085 4 301	Hammer-in Screw	25
I	085 4 302	Sprint Screw Ø 1/4" x 1.8"	100
J	610 1 063	Push Plug 1/4"	50
L	SQ 085 4 006	Nut 1/4"	100
	085 4 308	Nut M8	100
M	SQ 085 4 337	RapidRail® Hammerfix 1/4"	50
N	085 4 348	RapidStrut® Hammerfix M8*	25
P	085 4 332	Universal Rail Adaptor	50
Q	085 4 001	3/8" threaded rod adaptor with nut, SST	50
R	SQ 085 4 002	3/8" adapter kit for large dimension SQ	10
	SQ 085 4 003	1/2" adapter kit for large dimension SQ	10

* for heavy duty mounting to Strut

United States of America Canada

Walraven, Inc.
2605 East Oakley Park Road
Suite B
Walled Lake (Detroit), MI 48390 (US)
Toll free +1 800 610 5056
Phone +1 248 374 3100
Fax +1 248 374 3232
info.us@walraven.com

Walraven Group

Mijdrecht (NL) · Tienen (BE) · Bayreuth (DE)
Banbury (GB) · Malmö (SE) · Grenoble (FR)
Barcelona (ES) · Kraków (PL) · Mladá
Boleslav (CZ) · Moscow (RU) · Kyiv (UA)
Detroit (US) · Shanghai (CN) · Dubai (AE)
Budapest (HU)

walraven.com

Your wholesaler:

