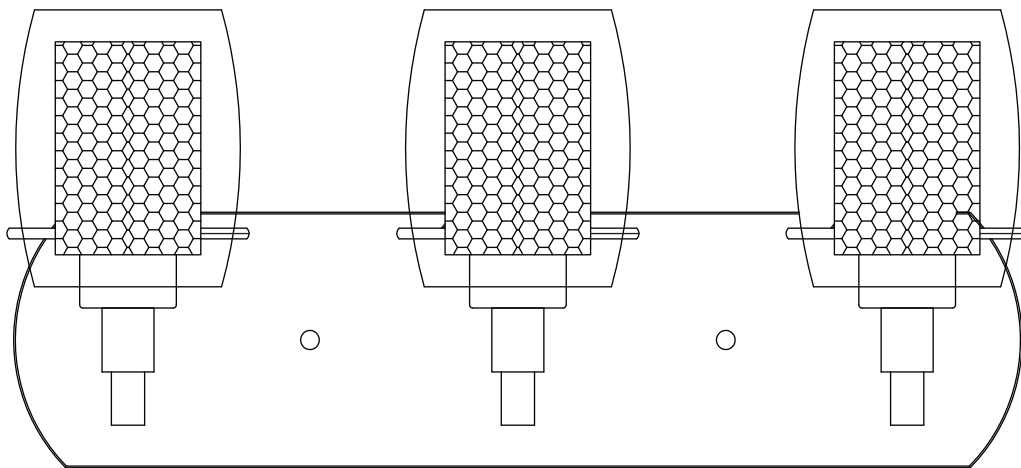




Item #000-000
Model #18759-4

INSTALLATION GUIDE

3 LIGHT VANITY LAMP



Questions, problems, missing parts? Before returning to the store,
call Hampton Bay Customer Service
8 a.m. - 7 p.m., EST, Monday- Friday, 9 a.m. - 6 p.m., EST, Saturday

1-855-HD-HAMPTON

HAMPTONBAY.COM

THANK YOU

We appreciate the trust and confidence you have placed in Hampton Bay through the purchase of this light. We strive to continually create quality products designed to enhance your home. Visit us online to see our full line of products available for your home improvement needs. Thank you for choosing Hampton Bay!

Table of Contents

Table of Contents.....	2	Pre-Installation	3
Safety Information.....	2	Planning Installation	3
Warranty.....	2	Tools Required	3
		Hardware Included	3
		Package Contents	4
		Installation	5

Safety Information

Turn off the electricity and read this instruction manual before installation.

The installation must be handled by a qualified electrician with a license.

Ensure that the power is off before replacing the bulb and cleaning the fixture.



WARNING: To reduce the risk of fire or injury, use this light indoors only.



WARNING: Hot surface. Keep away from curtains and other combustible materials.



WARNING: Risk of electric shock. Do not operate the luminaire with a missing or damaged shield. Do not use if there is any damage to the light or cord insulation. Inspect periodically.

Warranty

ONE YEAR MANUFACTURER WARRANTY

WHAT IS COVERED

The manufacturer warrants this light fixture to be free from defects in materials and workmanship for a period of one (1) year from date of purchase. This warranty applies only to the original consumer purchaser and only to products used in normal use and service. If this product is found to be defective, the manufacturer's only obligation, and your exclusive remedy, is the repair or replacement of the product at the neglect or mishandling. This warranty shall not apply to any product that is found to have been improperly installed, setup, or used in any way not in accordance with the instruction supplied with the product. This warranty shall not apply to a failure of the product as a result of an accident misuse, abuse, negligence, alteration, or faulty installation, or any other failure not relating to faulty material or workmanship. wear and tear.

WHAT IS NOT COVERED

This warranty shall not apply to any product that is found to have been improperly installed, set-up, or used in any way not in accordance with the instructions supplied with the product. This warranty shall not apply to a failure of the product as a result of an accident, misuse, abuse, negligence, alteration, or faulty installation, or any other failure not relating to faulty material or workmanship. This warranty shall not apply to the finish on any portion of the product, such as surface and/or weathering, as this is considered normal wear and tear. The manufacturer does not warrant and specially disclaims any warranty, whether express or implied, of fitness for a particular purpose, other than the warranty contained herein. The manufacturer specifically disclaims any liability and shall not be liable for any consequential or incidental loss or damage, including but not limited to any labor / expense costs involved in the replacement or repair of said product.

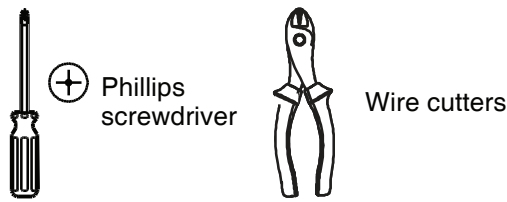
Contact the Customer Service Team at 1-855-HD-HAMPTON or visit www.HamptonBay.com.

Pre-Installation


PLANNING INSTALLATION

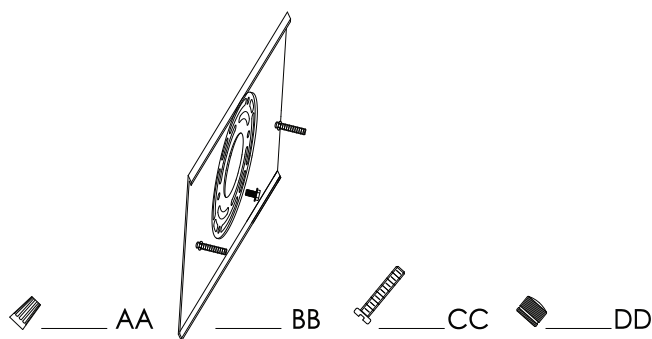
Compare all parts with the Hardware Included and Package Contents lists below. If any part is missing or damaged, do not install this product. Call the Customer Service Team at 1-877-527-0313 or visit www.HamptonBay.com.

TOOLS REQUIRED



HARDWARE INCLUDED

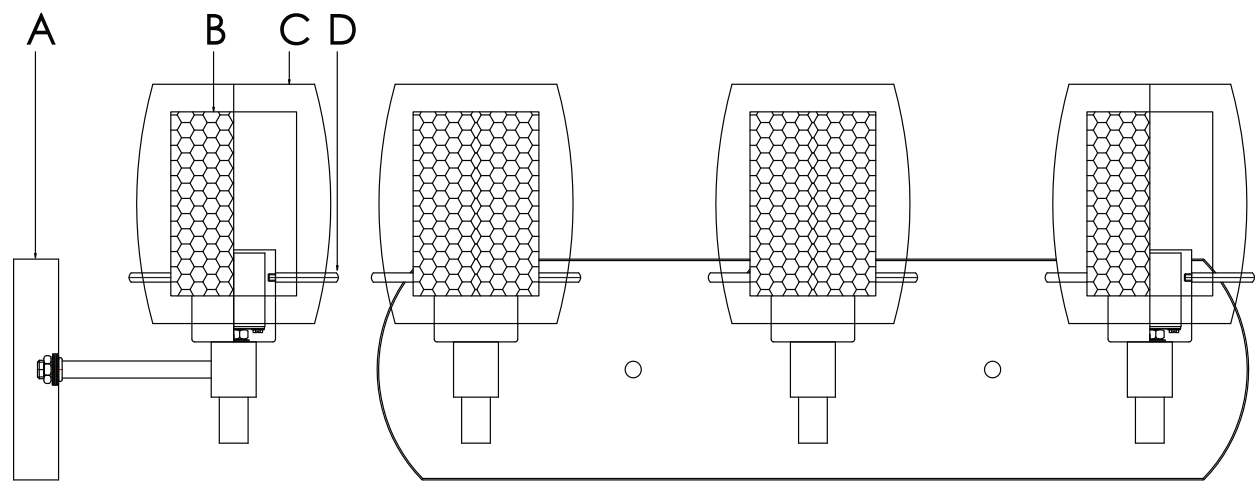
 NOTE: Hardware not shown to actual size.



Part	Description	Quantity
AA	Wire connector	3
BB	Mounting bar with screw	1
CC	Mounting screw	2
DD	Mounting nut	2

Pre-Installation (continued)

PACKAGE CONTENTS

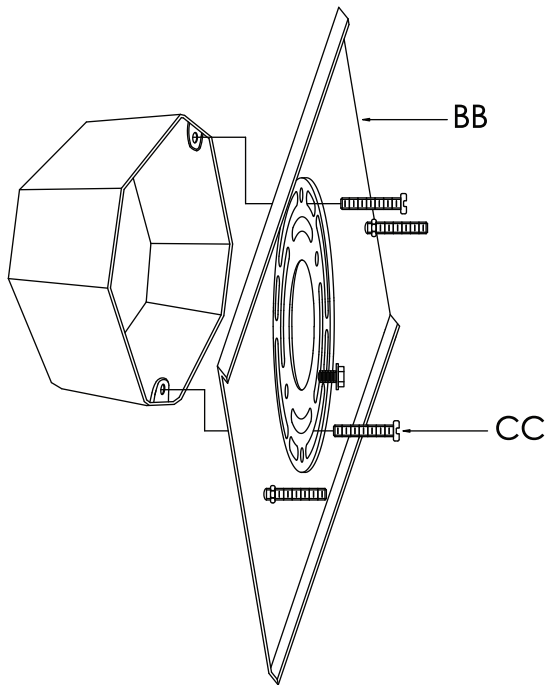


Part	Description	Quantity
A	Lamp body	1
B	Steel shade	3
C	Glass shade	3
D	Steel bar	9

Installation

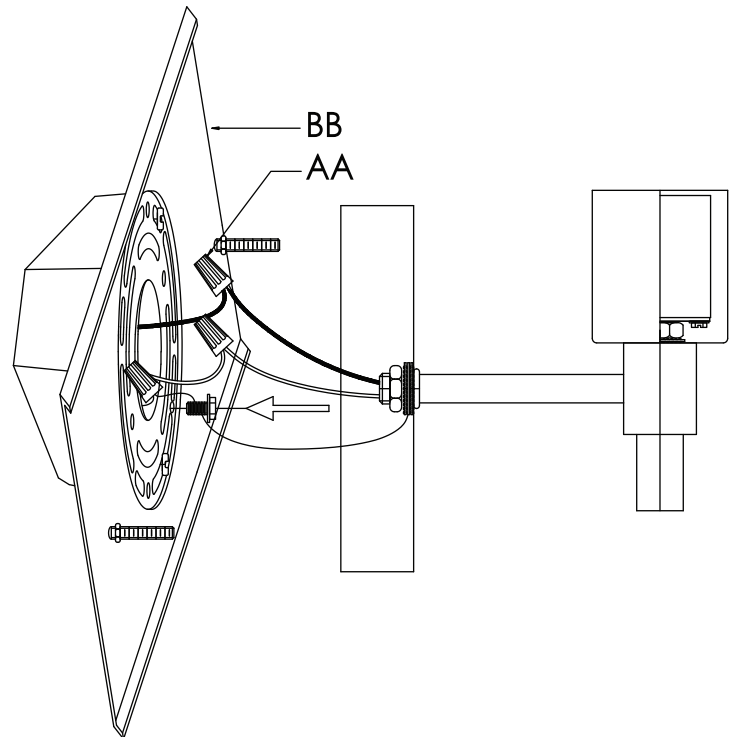
1 Installing the Mounting Bar

- Attach the mounting bar with preassembled screws (BB) to the outlet box using the mounting screws (CC). Ensure the preassembled screws are pointing outward from the outlet box.



2 Connecting the Wires

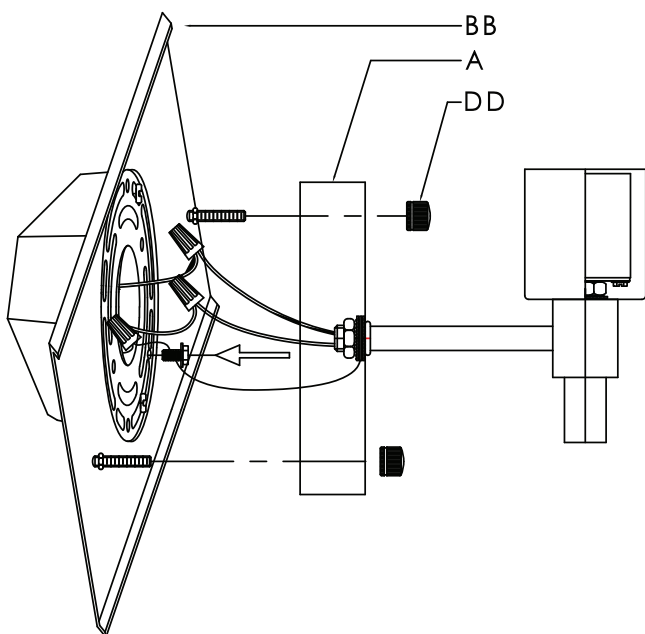
- Connect the black live wire from the light to the black live wire from the main power supply. Connect the white neutral wire from the light to the white neutral wire from the main power supply. Connect the earth (ground) bare copper wire from the light and the green earth (ground) wire from the main power to the green screw on the mounting bar (BB).
- Connect each wiring connection using wire connectors (AA) and gently tuck all connections into the outlet box.



3 Installing the Fixture Body

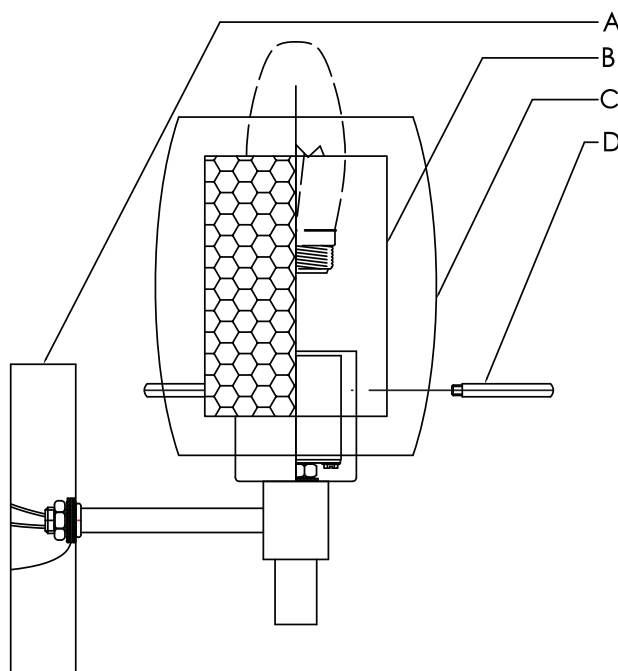
- Designed for Mounting Light Up or Down.

Fasten the lamp body (A) to the mounting bar (BB) by inserting the lamp body (A) through the screws of the mounting bar (BB) and securing in place with the nuts (DD).



4 Installing Bulbs and Shades

- Install the bulbs (B bulb, not included) into the lamp body. Turn clockwise to secure the bulbs into the sockets.
- Fasten the steel shade (B) and the glass shade (C) to the lamp body (A) by using the steel bars (D).





Questions, problems, missing parts? Before returning to the store,
call Hampton Bay Customer Service
8 a.m. - 7 p.m., EST, Monday- Friday, 9 a.m. - 6 p.m., EST, Saturday

1-855-HD-HAMPTON

HAMPTONBAY.COM

Retain this manual for future use.