

Quick Start Guide

45-0527 Tow Spreader

Read the manual that came with your Tow Spreader for:

- Important safety warnings
- Further explanation of features
- Operating instructions and flow control adjustments

Problem?
Call 1-800-448-9282

Agri-Fab

Quick Start Guide

45-0527 Tow Spreader

Read the manual that came with your Tow Spreader for:

- Important safety warnings
- Further explanation of features
- Operating instructions and flow control adjustments

Problem?
Call 1-800-448-9282

Agri-Fab

STEP 7: (SEE FIGURE 7)

- Attach the hopper to the lower set of holes in the hopper support tubes using four 1/4" x 1-3/4" hex bolts (23), 1/4" washers (34), nylon washers (33) and 1/4" nylock nuts (32). **Make only finger tight.**

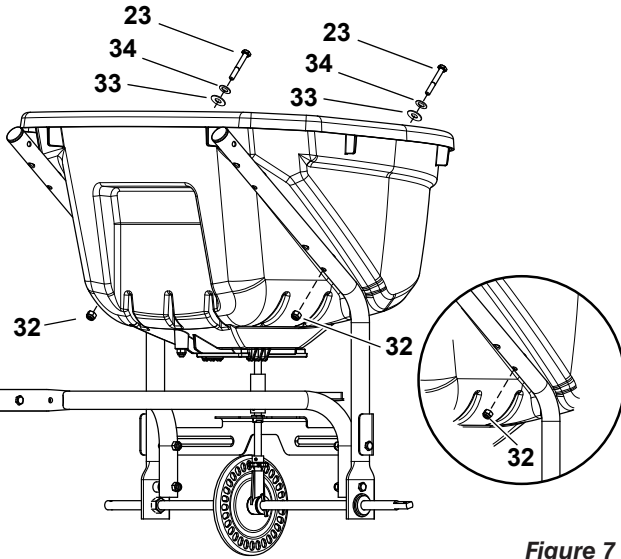


Figure 7

STEP 9: (SEE FIGURE 9)

- Attach the flow control bracket to the hitch tube using two 1/4" x 1-3/4" hex bolts (23), four 1/4" washers (34) and two 1/4" nylock nuts (32). **Do not tighten completely.**

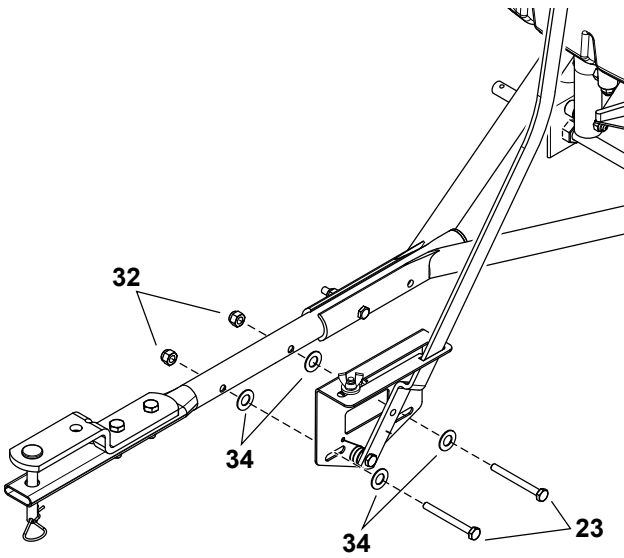


Figure 9

STEP 10: (SEE FIGURE 10)

- Install the end of the flow control rod (10) with no hole into the elongated hole in the flow plate on the bottom of the hopper. Lock the rod in the flow plate by rotating the rod.

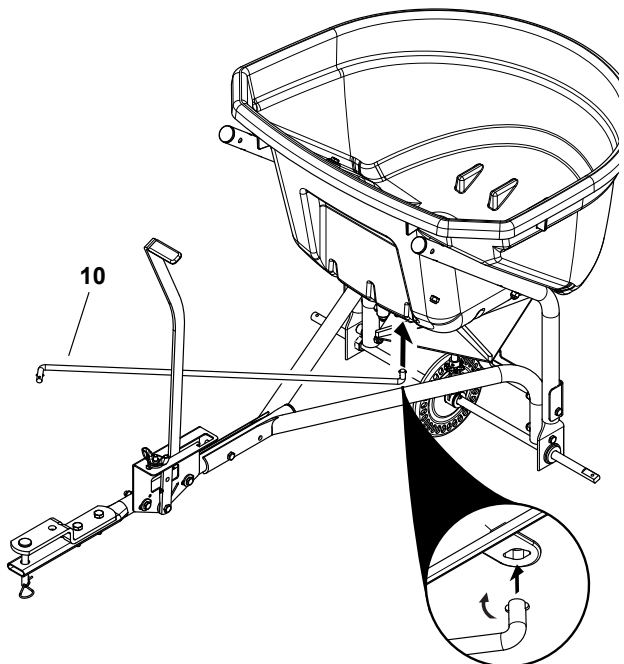


Figure 10

STEP 11: (SEE FIGURE 11)

- Swing the flow control rod around and insert the end of the rod into the flow control arm. Secure it with a 1/4" washer (34) and a 3/32" x 3/4" cotter pin (28).

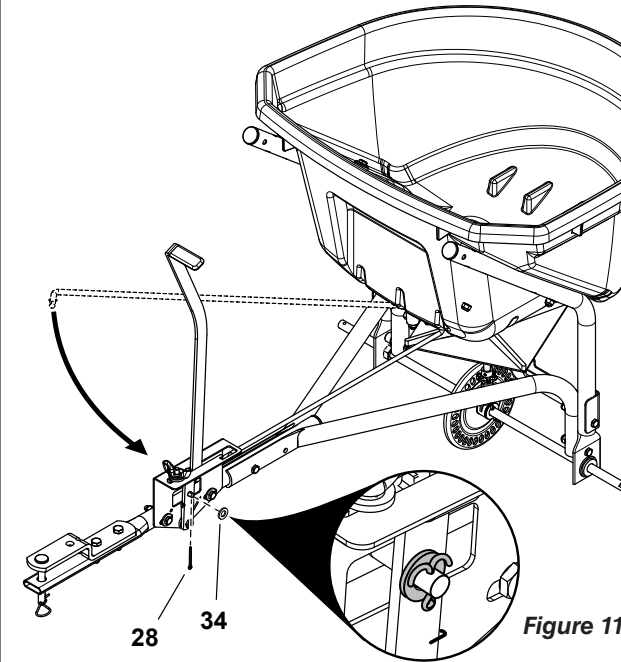


Figure 11

STEP 12: (SEE FIGURE 12)

- Fasten the hopper braces (8) to the hopper support tubes using two 1/4" x 1-3/4" hex bolts (23), 1/4" washers (34), nylon washers (33) and 1/4" nylock nuts (32). **Do not tighten completely.**
- Fasten the loose ends of the hopper braces to the hitch tube using a 1/4" x 2" hex bolt (22) and a 1/4" nylock nut (32). **Do not tighten completely.**

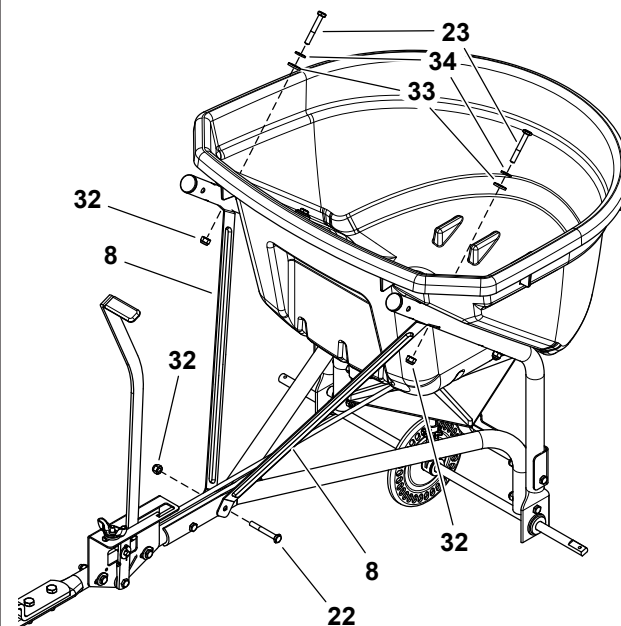


Figure 12

STEP 13

- **Tighten** all bolts and nuts **except** for those shown in step 9 that fasten the control bracket to the hitch tube.

STEP 14: (SEE FIGURE 13)

- Slide a spacer (27), a 1/2" washer (35), and the drive wheel (2) onto the square end of the axle.
- Slide a 1/2" washer (35) over the axle and secure the wheel with a 1/8 x 1-1/4" cotter pin (29), spreading the ends.

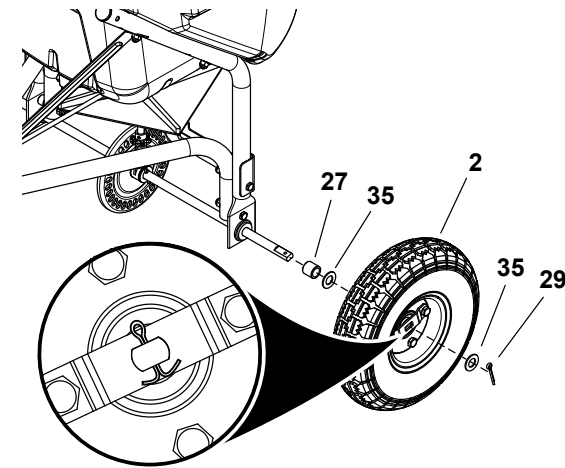


Figure 13

STEP 15: (SEE FIGURE 14)

- Slide a spacer (27), a 1/2" washer (35), and a wheel (2) onto the round end of the axle.
- Slide a 1/2" washer (35) over the axle and secure the wheel with a 1/8 x 1-1/4" cotter pin (29), spreading the ends.

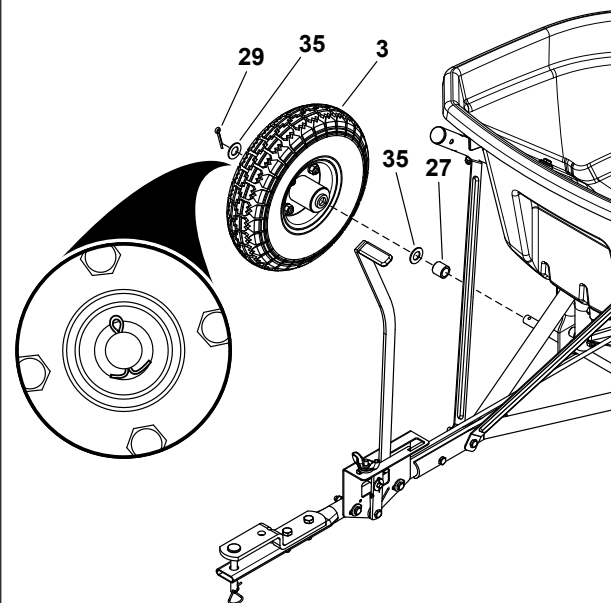


Figure 14

STEP 16: (SEE FIGURE 15)

- Set the adjustable stop at "5" and move the control handle back against it.
- Slide the control bracket along the hitch tube until the flow plate in the bottom of the hopper is open half way.
- **Tighten** the bolts and nuts fastening the control bracket. **Do not deform** the control bracket.
- Make sure the flow plate will open and close all the way. Readjust if necessary.

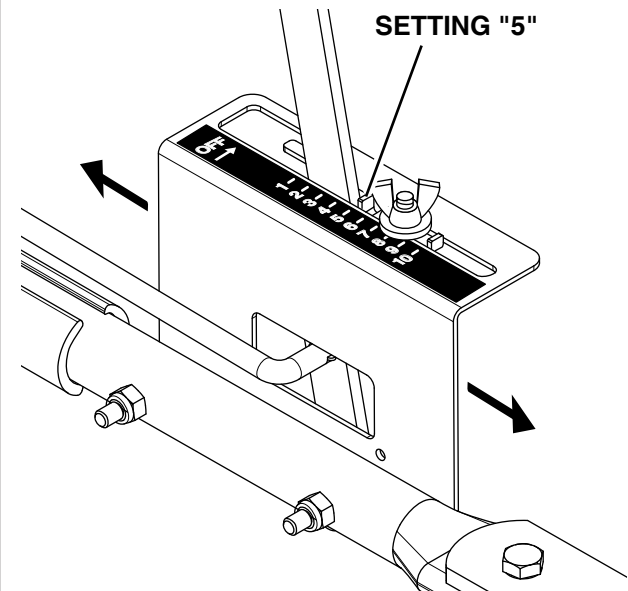


Figure 15

STEP 8: (SEE FIGURE 8)

- Install the grip (42) onto the flow control arm.
- Assemble the adjustable stop (44) to the flow control bracket using the 1/4" x 3/4" carriage bolt (24), nylon washer (33) and wing nut (43).

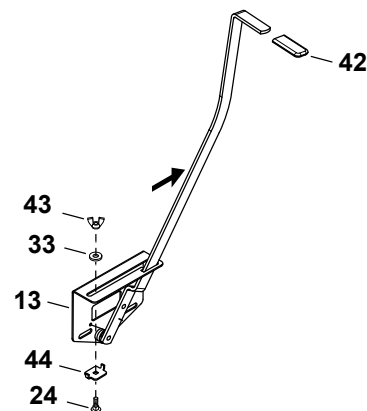


Figure 8