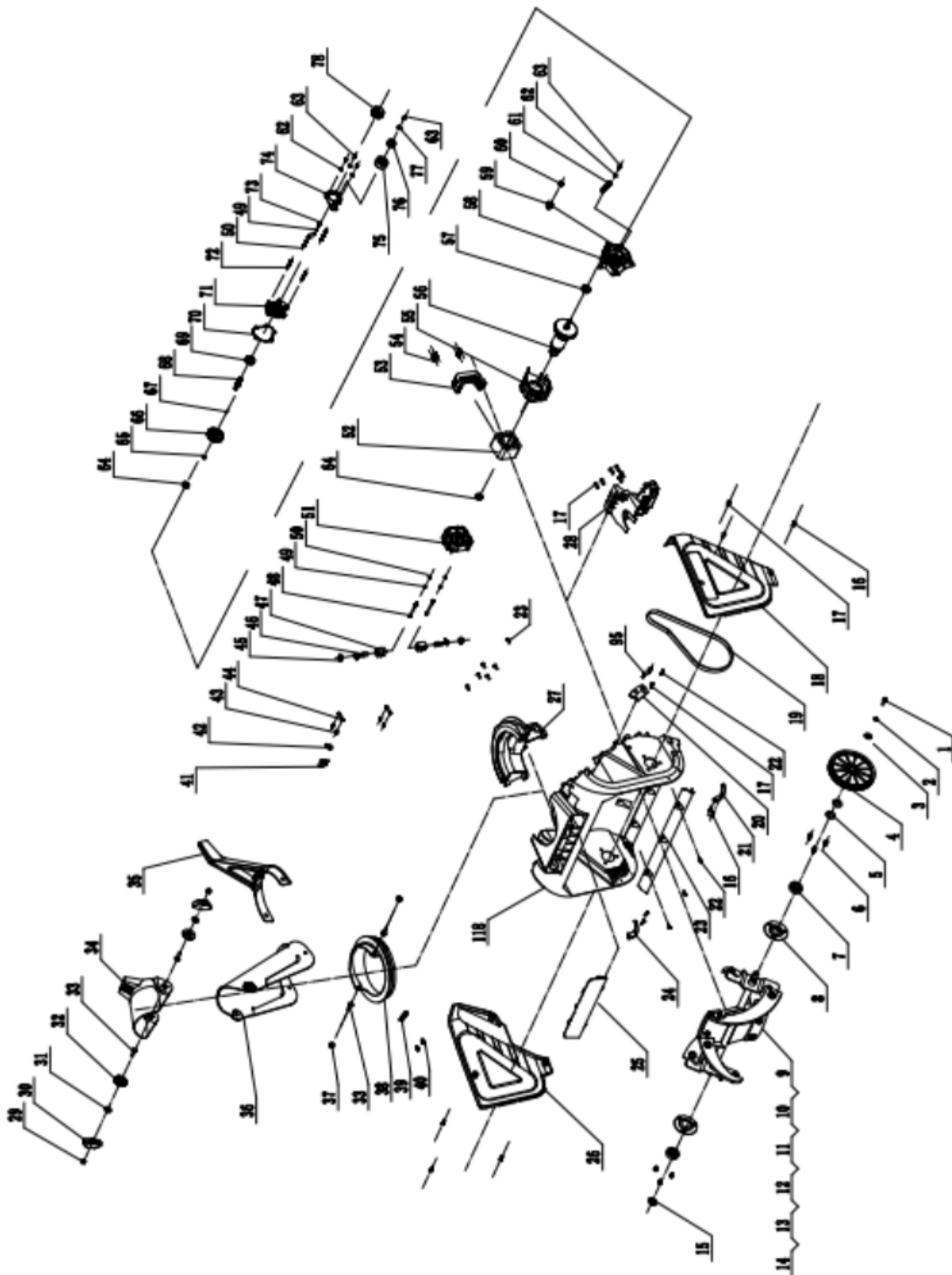
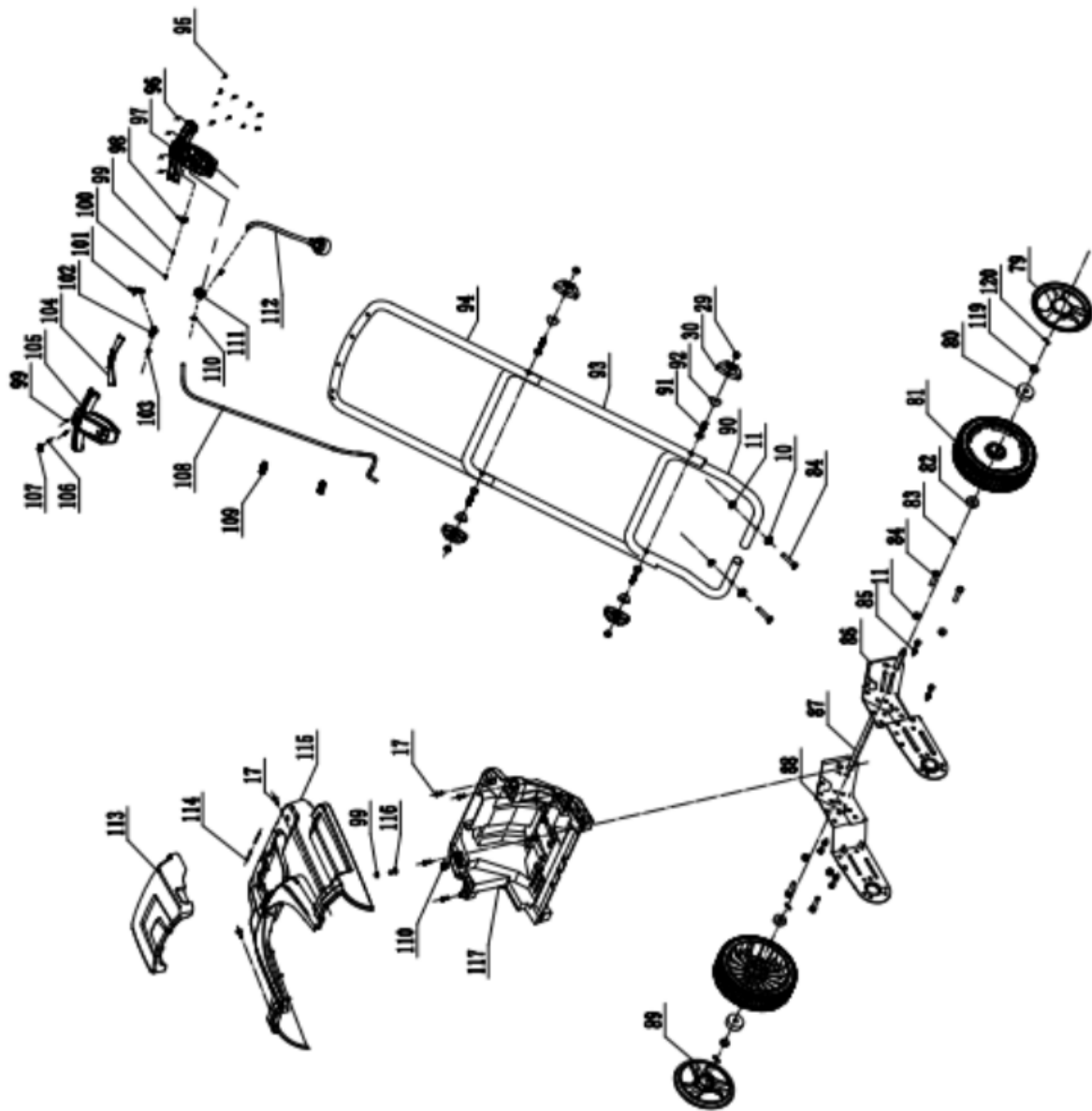


# EXPLODED VIEW AND PART LIST





Item	Stock #	Description	Qty
1	303020282	Hex Bolt M6x16	1
2	303041009	Spring Washer 6	1
3	303042009	Flat Washer	1
4	203060009A	Big Belt Wheel	1
5	303042069	Flat Washer	3
6	303020339	Hex Bolt M6x14	6
7	303100002	Deep Groove Ball Bearing	2
8	303070797	Bearing Plate Welded	2
9	303020106	Hex Bolt M8x20	12
10	303042013	Flat Washer	14
11	303030036	Nut M8	14
12	302110092	DB2801 Long Scraper	4
13	302110091	DB2801 Short Scraper	2
14	303181303	DB5021 Auger Shaft Welded	1
15	303050066	Shaft Ring 17	1
16	303010284	Screw ST4.8x12	6
17	303010176	Screw ST6.3x16	17
18	203050654	Left Side Cover	1
19	302040025	V-belt	1
20	203050588	Motor Support Plate	1
21	303070738	Left Corner	1
22	303010312	Screw ST4.8x16	11
23	303070741A	Shovel	1
24	303070739	Right Corner	1
25	203010747	LOGO Plate	1
26	203050655	Right Side Cover	1
27	203050171	Deck	1
28	203050567	Motor Bracket	1
29	303030066	Normal Hex Bolt M8	6
30	203020336A	Knob	6
31	303042023	Flat Washer	2
32	203020380	Pad	2

Item	Stock #	Description	Qty
61	303130019	Tensioning Wheel Spring	1
62	303042019	Flat Washer	4
63	303020077	Bolt M4x10	5
64	303100023	Deep Groove Ball Bearing	2
65	303050029	Shaft Ring	1
66	303160004	Big Gear	1
67	303110020	Woodruff Key	1
68	303160111	Output Shaft	1
69	303100024	Deep Groove Ball Bearing	1
70	303070029	Oil Pad	1
71	303090002	End Cover	1
72	303010221	Screw ST4x40	2
73	303020079	Bolt M4x14	3
74	303180588	Tension Wheel Bracket Welded	1
75	203020077	Tension Wheel	1
76	303100016	Deep Groove Ball Bearing 6000RS	1
77	303042035	Flat Washer	1
78	303060005	Small Pulley	1
79	203050658	Wheel Cover L	1
80	303100034	Deep Groove Ball Bearing 6203Z	2
81	203050544	8" Wheel	2
82	303100065	Wheel Bearing	2
83	303160845	Butterfly Pin	2
84	303020124	Hex Bolt M8x35	6
85	303010353	Screw ST6.3x16	8
86	303071479	Left Support Plate	1
87	303181283	Shaft	1
88	303071480	Right Support Plate	1
89	203021421	Wheel Cover R	1
90	303081214	Lower Tube	1
91	303020057	T-screw	4
92	303043010	Concave Pad	4

33	303020161	Square Neck Bolt M8x25	4	93	303081213	Middle Tube	1
34	203050174	Upper Chute	1	94	303081212	Upper Tube	1
35	203010648	Chute Handle	1	95	303010358	Screw ST4.2×14	10
36	203050175	Middle Chute	1	96	302070001	Oil Cap Seal Ring	4
37	303030077	Nut M8	2	97	203050660	Lower Switch Box	1
38	203050172	Rotating disc	1	98	303130013	Button Spring	1
39	203010647	Locating Piece	1	99	303042019	Flat Washer	1
40	303130138	Press Spring	2	100	303010313	Screw	3
41	301080009	Overcurrent Protector	1	101	203021102A	Switch Button	1
42	306010037	Screw Cap	1	102	203010655	Push Rod	1
43	303010203	Screw 3x10	4	103	303130124	Spring	1
44	303070074	Brush Holder	2	104	203021101A	Right Trigger	2
45	301110043	Brush Cover	2	105	203050552	Upper Switch Box	1
46	301110058	Electrical Carbon	2	106	303130125	Reverse Lock Button Spring	1
47	301110044	Brush Component	2	107	203010656	Reverse Lock Button	1
48	303010162	Screw ST4×70	2	108	301040078A	Cable (120V)	1
49	303041008	Spring Washer φ4	5	109	203020065	Clip	2
50	303042038	Flat Washer	5	110	203020047	Cable Clamp	3
51	203020050	Rear Motor Bracket	1	111	301100046	Switch	1
52	301030008	Stator	1	112	301040045	Power Cord	1
53	203050587	Motor Holder	1	113	203050662	Battery Pack Cover	1
54	303010355	Screw ST6.3×20	4	114	303100086	Shaft	2
55	203020063	Front Motor Bracket	1	115	203050656	Upper Cover	1
56	301030005A	Rotor	1	116	303010363	Screw	1
57	303100030	Deep Groove Ball Bearing	1	117	203050657	Lower Cover	1
58	303090005	Middle Cover	1	118	203050170A	Deck	1
59	203060019	Gear	1	119	303160887	Spacer	2
60	303030047	Nut M8	1	120	303121002	Cotter Pin	2