

26cc String Trimmers
Item Nos. UT33600B, UT33650B
Mfg. Nos. 090330017, 090330018
Repair Sheet

HOMELITE CONSUMER PRODUCTS, INC.

P.O. Box 1288, Anderson, SC 29622 • Phone 1-800-242-4672
États-Unis, Téléphone 1-800-242-4672 • USA, Teléfono 1-242-4672

www.homelite.com

HOMELITE 26cc STRING TRIMMER - ITEM NUMBERS UT33600B, UT33650B

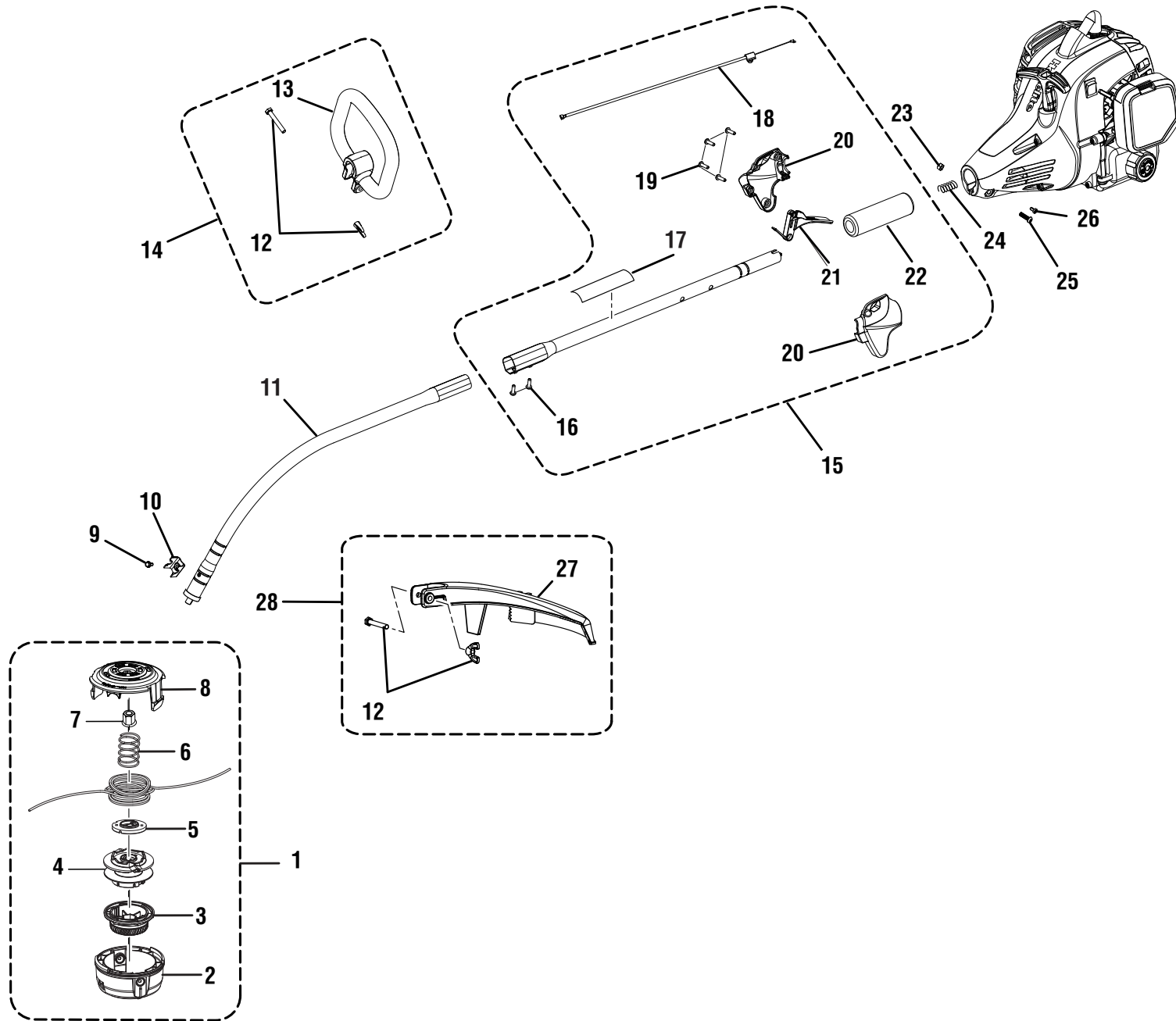


Figure A_UT33600

HOMELITE 26cc STRING TRIMMER – ITEM NUMBERS UT33600B, UT33650B

The item number and manufacturing number will be found on a label attached to the unit. Always mention the item number and manufacturing number in all correspondence regarding your **STRING TRIMMER** or when ordering repair parts.

PARTS LIST (FIGURE A)

KEY NO.	PART NUMBER	DESCRIPTION	QTY	KEY NO.	PART NUMBER	DESCRIPTION	QTY
1	311759011	Trimmer Head Assembly (Inc. Key Nos. 2-8).....	1	17	940657168	Icon Warning Label	1
2	530366001	Lower Housing	1	18	307196007	Throttle Cable.....	1
3	530455001	Bump Knob (Gray).....	1	19	660526003	Screw (M4 x 20 mm, T20 Torx Pan Hd. T.F.)	4
4	530670001	Spool	1	20	310831007	Trigger Handle Assembly (Inc. Key Nos. 19 and 21).....	1
5	529803001	String Guide	1	21	533909001	Throttle Trigger	1
6	678749001	Compression Spring	1	22	570087005	Foam Grip	1
7	662569001	Hex Nut (M8)	1	23	678029002	Hex Nut (M6)	1
8	530001004	Upper Housing	1	24	679974001	Compression Spring	1
9	660647001	Screw (10-32 x 3/8 in., Hex Hd.)	1	25	660697002	Screw (M6 x 20 mm, T27 Torx Button Hd.)...1	1
10	638001001	Clamp	1	26	660925011	Screw (M4 x 8 mm, T20 Torx Round Hd.)	1
11	311100002	Lower Boom Assembly	1	27	308052015	Grass Deflector	1
12	205012001	Fastener Kit	2	28	308744010	Grass Deflector Assembly (Inc. Key Nos. 12 and 27).....	1
13	518674001	Front Handle.....	1				
14	308741001	Front Handle Assembly (Inc. Key Nos. 12-13).....	1				
15	205039001	Boom Assembly (Inc. Key Nos. 16-22).....	1				
16	661848001	Screw (M5 x 10 mm, Hex. Soc. Hd.).....	2				
					Not Shown:		
					995000323	Operator's Manual	
					4-25-18		
					(Rev:02)		

* STANDARD HARDWARE ITEM – MAY BE PURCHASED LOCALLY

HOMELITE 26cc STRING TRIMMER – ITEM NUMBERS UT33600B, UT33650B

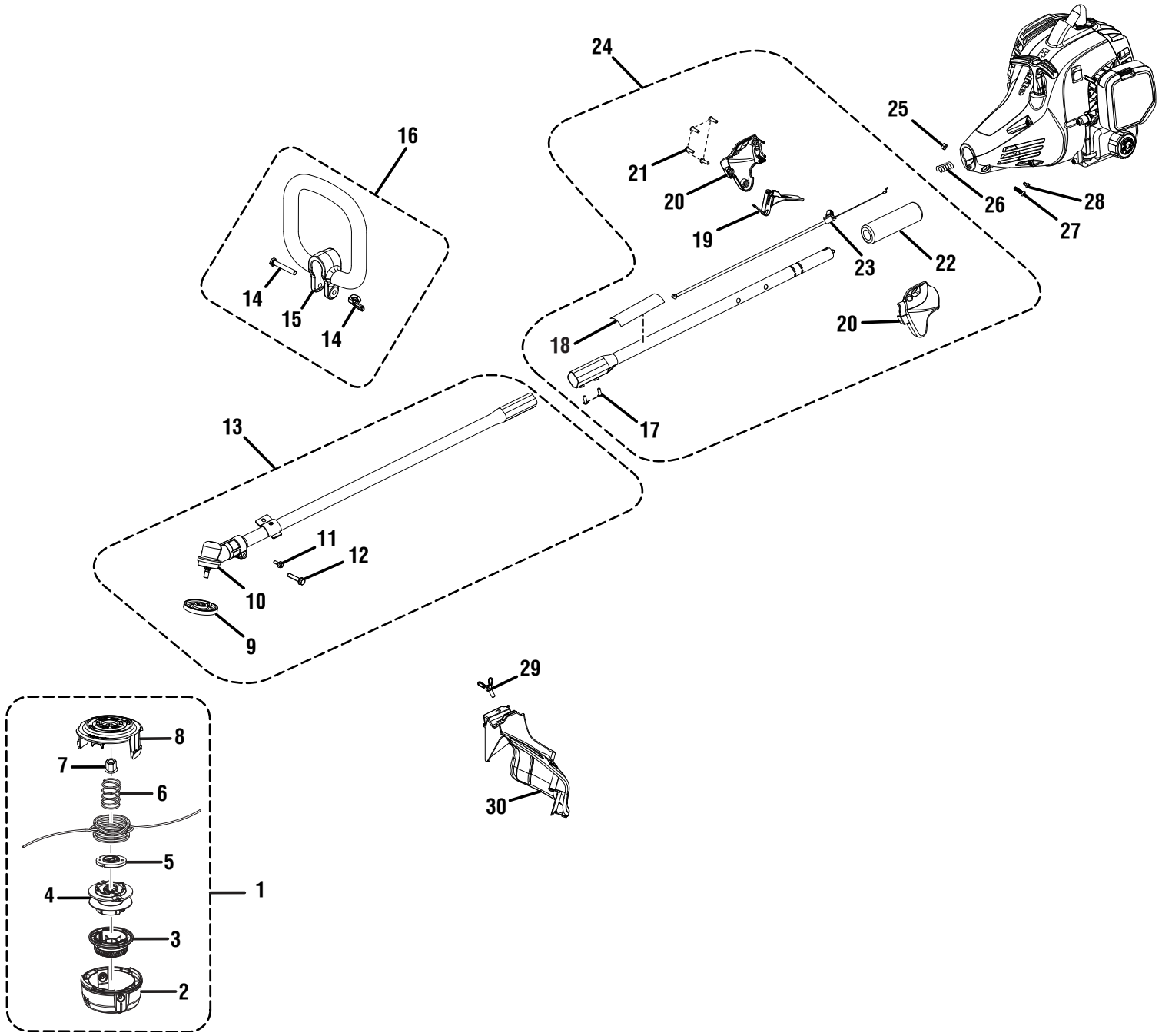


Figure B_UT33650

HOMELITE 26cc STRING TRIMMER – ITEM NUMBERS UT33600B, UT33650B

The item number and manufacturing number will be found on a label attached to the unit. Always mention the item number and manufacturing number in all correspondence regarding your **STRING TRIMMER** or when ordering repair parts.

PARTS LIST (FIGURE B)

KEY NO.	PART NUMBER	DESCRIPTION	QTY	KEY NO.	PART NUMBER	DESCRIPTION	QTY
1	311759012	Trimmer Head Assembly (Inc. Key Nos. 2-8).....	1	16	308741001	Front Handle Assembly (Inc. Key Nos. 14-15).....	1
2	530366001	Lower Housing	1	17	661848001	Set Screw (M5 x 10 mm, Hex Soc. Hd.)	2
3	530455001	Bump Knob (Gray).....	1	18	940657168	Icon Warning Label	1
4	530670001	Spool	1	19	533909001	Throttle Trigger	1
5	529803001	String Guide	1	20	310831007	Handle Assembly (Inc. Key Nos. 19 and 21)	1
6	678749001	Compression Spring	1	21	660526003	Screw (M4 x 20 mm, T20 Torx Pan Hd. T.FI.)	4
7	662568002	Hex Nut (M8, Left Hand Threads)	1	22	570087005	Foam Grip	1
8	530001004	Upper Housing	1	23	307196007	Throttle Cable.....	1
9	678011001	Flanged Washer	1	24	205039001	Boom Assembly (Inc. Key Nos. 17-23).....	1
10	308210009	Gear Head	1	25	678029002	Hex Nut (M6)	1
11	660736001	Screw w/Washer (10-24 x 5/8 in., Hex Hd. T.F.)	1	26	679974001	Compression Spring	1
12	660642001	Screw (1/4-20 x 1-1/4 in., Hex Hd.)	1	27	660697002	Screw (M6 x 20 mm, T27 Torx Button Hd.)... 1	
13	311101002	Lower Boom Assembly (Inc. Key Nos. 9-12).....	1	28	660925011	Screw (M4 x 8 mm, T20 Torx Round Hd.)	1
14	205012001	Fastener Kit	1	29	660886001	Wing Nut (1/4-20).....	1
15	518674001	Front Handle.....	1	30	308473005	Grass Deflector Assembly (Inc. Key No. 29).....	1

HOMELITE 26cc STRING TRIMMER – ITEM NUMBERS UT33600B, UT33650B

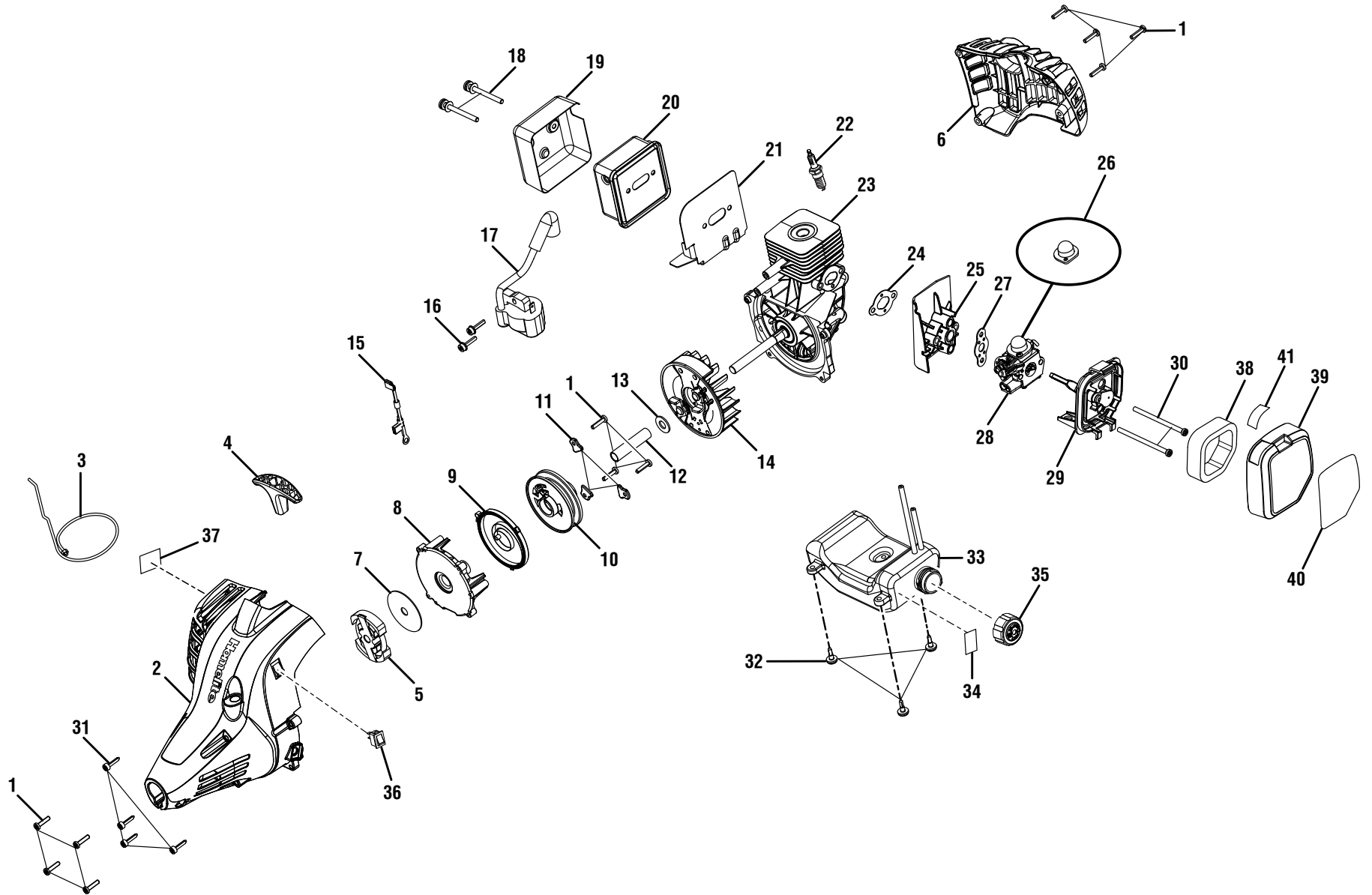


Figure C

HOMELITE 26cc STRING TRIMMER – ITEM NUMBERS UT33600B, UT33650B

The item number and manufacturing number will be found on a label attached to the unit. Always mention the item number and manufacturing number in all correspondence regarding your **STRING TRIMMER** or when ordering repair parts.

PARTS LIST (FIGURE C)

KEY NO.	PART NUMBER	DESCRIPTION	QTY	KEY NO.	PART NUMBER	DESCRIPTION	QTY
1	660563002	Screw (M4 x 18 mm, T20 Torx Pan Hd.)	11	22	870174001	* Spark Plug (RCJ6Y).....	1
2	205038001	Starter Housing Assembly (Inc. Key No. 37).....	1	23	308892038	Short Block Assembly.....	1
3	900849012	Starter Rope (42 in.)	1	24	901551001	Intake Gasket	1
4	525485001	Pulley Handle	1	25	518497006	Heat Dam Deflector.....	1
5	300960002	Clutch Assembly	1	26	N/A	* Primer Bulb (Kit AC20100)	1
6	519824002	Rear Housing.....	1	27	903034001	Carburetor Gasket.....	1
7	638090001	Clutch Washer	1	28	309375009	Carburetor Assembly	1
8	518692001	Starter Housing	1	29	525106001	Air Box Base.....	1
9	638033001	Spring & Container Assembly	1	30	660454007	Screw (M5 x 76 mm, T20 Torx Truss Hd.)	2
10	310022004	Starter Pulley Assembly	1	31	660970001	Screw w/Washer (M4 x 16 mm, T25 Torx Truss Hd.)	4
11	638389001	Pulley Retainer	3	32	660970002	Shoulder Screw w/Washer (M4 x 14 mm, T25 Torx Truss Hd.)	3
12	638284006	Spacer	1	33	205001003	Fuel Tank w/Label & Cap Assembly (Inc. Key Nos. 34-35).....	1
13	650017001	Washer	1	34	941790001	Gas Tank Warning Label	1
14	308811008	Flywheel Assembly.....	1	35	310816018	Fuel Cap	1
15	308863032	Lead Assembly.....	1	36	760961002	Momentary Stop Switch.....	1
16	660968001	Screw w/Washer (M4 x 19 mm, T20 Torx Pan Hd.).....	2	37	940654088	Combustion Warning Label.....	1
17	850108013	Ignition Module.....	1	38	560873001	Air Filter	1
18	660638003	Screw w/Washers (10-24 x 2-1/8 in., T25 Torx Truss Hd.)	2	39	205040001	Air Box Cover (Inc. Key No. 40-41)	1
19	638442001	Heat Shield.....	1	40	940734178	Starting Label	1
20	308990016	Muffler Assembly.....	1	41	940216005	Choke Label	1
21	901452011	Muffler Gasket.....	1				

* STANDARD HARDWARE ITEM – MAY BE PURCHASED LOCALLY