



Before



After



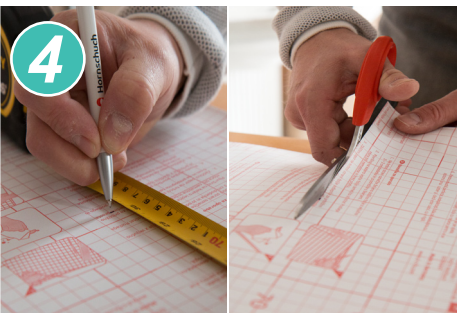
Tools for the job



Remove doors and handles



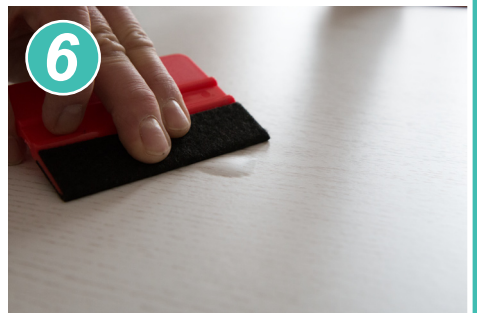
Clean thoroughly to remove any grease and dust



Measure the door and cut to size allowing enough extra to wrap around the edges.
(The handy grid on the backing paper makes measuring and cutting in straight lines easier)



Peel away a small section of backing paper and stick the film into place. Gradually peel away the rest of the backing paper little by little, smoothing out to the sides as you go. If you make a mistake simply peel back and start again



Air bubbles can be pushed out to the side or for small bubbles, prick with a pin to release the air.
Tip! If your cupboard doors aren't flat (eg shaker style), use a hairdryer on a low setting to warm the film so it moulds into the shape of the cupboard door



For neat corners, cut diagonally into the corner with scissors. Fold one flap around the corner, then the other. You will be left with a small triangular excess which can be trimmed away with your scalpel, then wrap the rest of the excess film over the edge to the inside of the door, this can be trimmed later if you prefer. Repeat for all 4 corners & sides



Hang doors back into place, re-attach the handles, stand back and admire your handy work!