

SAE to Bare end cable
1.5mm² / 1meter



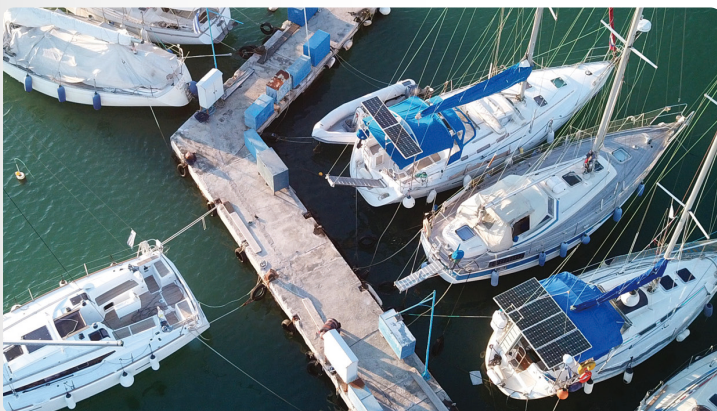
Bare end to battery clamps cable
1.5mm² / 1meter



Mounting Screws and
Brackets

Features / Solar Panel

- **Aluminum Frame, Rugged Design**
- **High Efficiency Solar Cells Power Up to 215W, Continuously recharge your 12V batteries with the power of the sun.**
- **Includes battery connecting cable and mounting Z-brackets**
Connect additional panels for a faster charge
- **25 year warranted to generate up to 80% of rated power**
- **Requires a charge controller to protect batteries from overcharging**



SPECIFICATIONS

Solar Panel

Solar Panel: Monocrystalline

Maximum Power : 215 Watt

Voltage at Pmax(Vmp): 21.8 V

Current at Pmax(Imp): 9.85A

Open circuit voltage(Voc): 25.33 V

Short circuit Current(Isc): 10.24 A

Operating Temperature: -40°C to + 85°C

Maximum System Voltage: 1000VDC

Protection Class: Class A

Material: Aluminum, Glass construction & Steel

SHIPPING DETAILS

Item Number: 50201

UPC Code: 839290005972

Country of Origin: Vietnam

Panel Dims LxWxH: 26.3 x 1.4 x 57.8 in

Package Dims LxWxH: 27.6 x 2.36 x 59 in

Product Weight: 29.6 lbs with package

25.6 lbs without package

Master Quantity: 1

Master Dimensions: 27.6 x 2.36 x 59 in

Master Weight: - lbs



1-800-588-0590
www.naturepowerproducts.com

f [fb.me/NaturePowerProducts](https://www.facebook.com/NaturePowerProducts)

