

**LIFETIME™ 5' X 36"**

Comfortable bathing design with form-fitted backrest and molded-in armrests.

**Model# 2771L (specify color)**

- Acrylic with fiberglass reinforcement
- Lifetime Overflow Drain for maximum water depth
- 1.4 HP self-draining pump/motor with dry run seal
- Eight flow adjustable jets including:
  - Two adjustable Ideal Flow Comfort Jets™
  - Six adjustable Comfort Jets™
- Two silent air volume controls
- Side-mounted On/Off control
- Complete factory installed and tested whirlpool system
- Self leveling feet
- Designed with undermount installation option

**Model# 2771LC (specify color)**

- Same as above with the EverClean™ whirlpool system. The EverClean™ antimicrobial system incorporates AlphaSan®, a patented antimicrobial agent manufactured right into the circulation system components, which suppresses the growth of unsightly algae, fungus, mold and mildew.

**Model# 2771L.002 Bathing Pool Only**

**Nominal Dimensions:**

60" x 36" x 19-3/4"  
(1524 x 914 x 502mm)

**Compliance Certifications -**

**Meets or Exceeds the Following Specifications:**

- Underwriters Laboratories - Hydromassage Bathtubs UL 1795
- ASME A112.19.7M for Whirlpool Appliances
- ANSI Z124.1 for Plastic Bathtubs
- ASTM E162 for Flammability
- NFPA 258 for Smoke Density

SEE REVERSE FOR ROUGHING-IN DIMENSIONS AND PRODUCT SPECIFICATIONS



**Components Required:**

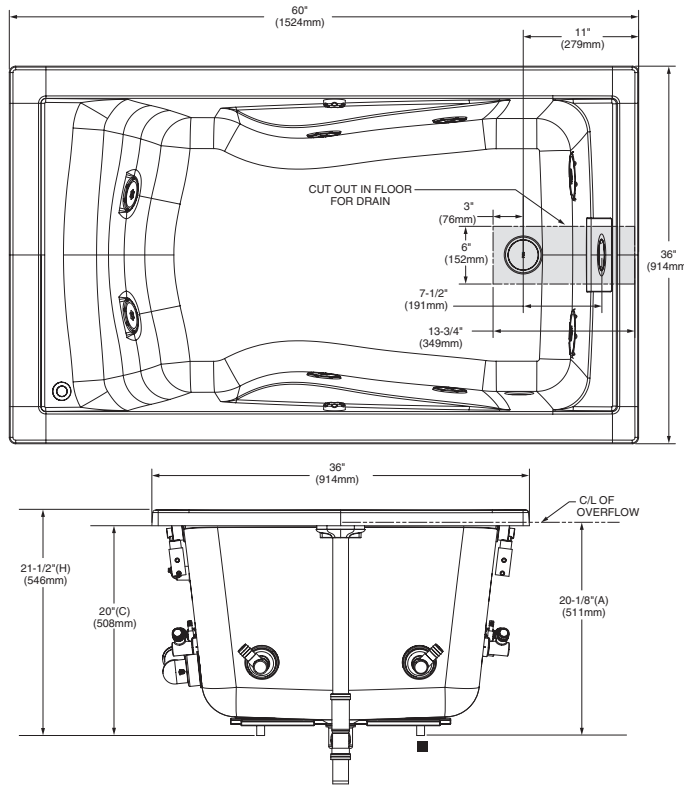
- Bath Filler\*: (specify finish)
- Bath Drain: 1599.205.XXX (specify color)  
**OR** 1599.500.020 (white only)
- Five Foot Apron: 9261.019.XXX (specify color)
- E-Z-Install™ Whirlpool Heater - EZHEAT-100
- Tile Bead Kit: TILE-BEAD

\* See American Standard Faucet Selector

For color/finish availability and other faucet choices, please see the Product Selector and Pricing Guide.

**NOTE:** E-Z-Install™ Whirlpool Heater is designed to maintain water temperature during operation. It will not heat cold water to desired bathing temperature.

**Whirlpool Shown**



DIMENSIONS OF FIXTURES ARE NOMINAL AND MAY VARY WITHIN THE RANGE OF TOLERANCES ESTABLISHED BY ANSI STANDARDS Z124.1 AND A112.19.7.

<b>GENERAL SPECIFICATIONS FOR 2771L WHIRLPOOL</b>	
INSTALLED SIZE	60 x 36 x 21-1/2 In. (1524mm x 914 mm x 546mm)
WEIGHT	75 Lbs. (34 Kg.)
WEIGHT w/WATER	800 Lbs. (363 Kg.)
GAL. TO OVERFLOW	87 Gal. (329 L.)
MIN. OPERATING GAL.	50 Gal. (189 L.)
BATHING WELL AT SUMP	41-1/4 x 26-1/4 In. (1048mm x 667mm)
BATHING WELL AT RIM	52-1/2 x 30 In. (1334mm x 762mm)
WATER DEPTH TO OVERFLOW	18-1/2 In. (470mm)
FLOOR LOADING (PROJECTED AREA)	53 Lbs./Sq. Ft. (260 Kgs/Sq. m.)
<b>WHIRLPOOL ELECTRICAL SPECIFICATIONS</b>	
PUMP	1.4 HP, 9.7 AMPS, 120V.

**NOTES:**

BATH CAN BE INSTALLED EITHER ABOVE OR BELOW FLOOR LINE AS PIER, ISLAND, OR PENINSULA TYPE INSTALLATION. SUPPORT OF BATH BY SUMP BEDDING. SUPPORT AND ENCLOSING MATERIAL BY OTHERS.

■ REFER TO INSTALLATION INSTRUCTIONS SUPPLIED WITH WHIRLPOOL FOR ADDITIONAL INFORMATION.

OPTIONAL 3 WALL TILING BEAD. KIT No. TILE-BEAD AND APRON No. 5FT-APRON AVAILABLE AND MUST BE ORDERED SEPARATELY.

FITTINGS NOT INCLUDED AND MUST BE ORDERED SEPARATELY.

PROVIDE SUITABLE REINFORCEMENT FOR ALL SUPPORTS.

**IMPORTANT:** Dimensions of fixtures are nominal and may vary within the range of tolerances established by ANSI Standard Z124.1 These measurements are subject to change or cancellation. No responsibility is assumed for use of superseded or voided leaflet