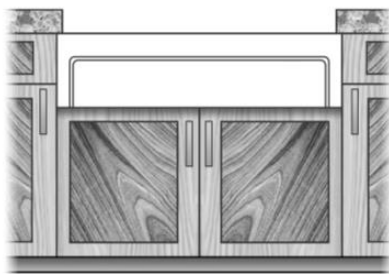


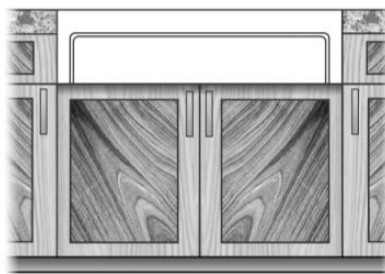
Winpro® Fireclay Sinks

Read Instructions Before You Begin

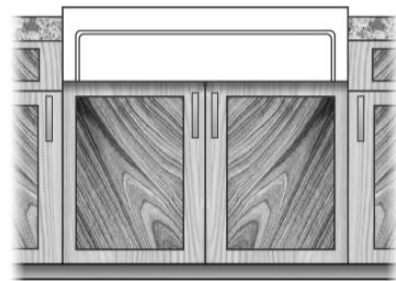
- It is highly recommended that professional or experienced installer manage the countertop cutting and installation of the product. This installation is designed for an advanced skill level.
- Please discuss with your installation professional your desired installation preference (Under mount, Flushmount, Reveal). *Typical installations utilize the undermount installation.*



Undermount Installation

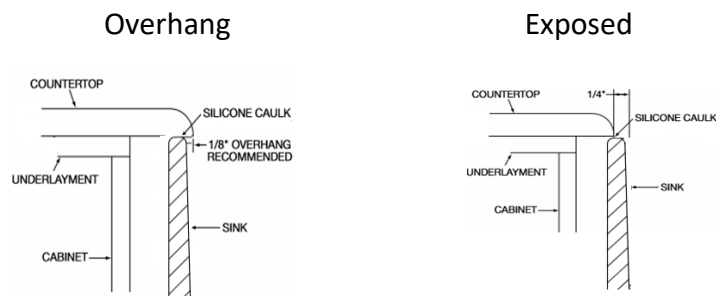


Flushmount Installation



Reveal Installation

- *Typical installations utilize the undermount installation with either a 1/4" exposed or 1/8" overhang*



- No cut out template is provided with this product due to the slight dimensional variation inherent in the fireclay manufacturing process. The actual sink should be used as the template for cutting the countertop and cabinets by a professional or experienced installer. Some models have reversible aprons, ensure your installer understands which face of the sink will be revealed before cutting countertop. The manufacturer is not responsible for countertop or sink damage during the installation process.
- Please inspect your sink for any damage prior to the installation process
- Fireclay sinks should only be installed with granite, quartz, or solid surface countertops
- Your professional or experienced installer will need to build support frames inside your cabinet to support the weight of the sink (full sink, with water and dishes, could weigh up to 300 Lbs.) All installations need proper room for faucets, piping, and other potential accessories. There are many different ways to build the support: metal strapping, wood braces, or a plywood platform. Consult with the installer for the best option.

Tools Needed



Tape Measure



Safety Glasses



Saw



Hammer



Felt-tip Marker



Silicone Sealant

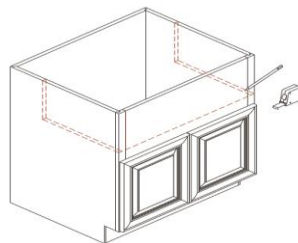


Level

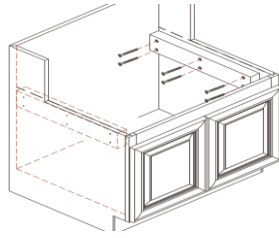


Wood Glue

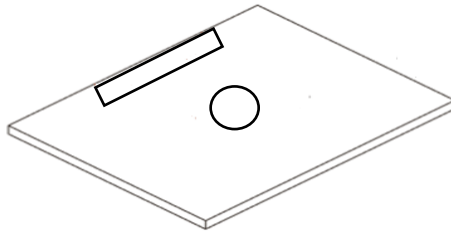
1. Measure the location for your kitchen sink and cut the cabinet for proper fit. You will need to ensure your measurements take into account the countertop which is placed over the sink and cabinets as the last step. Note:
 - For a 33" wide sink you need a minimum of a 36" cabinet
 - For a 30" wide sink you need a minimum of a 33" cabinet
 - For a 24" wide sink you need a minimum of a 27" cabinet



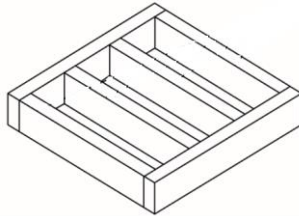
2. Fasten 2 X 4's to both interior sides of the cabinet using wood screws. Use wood glue for an extra secure bond.



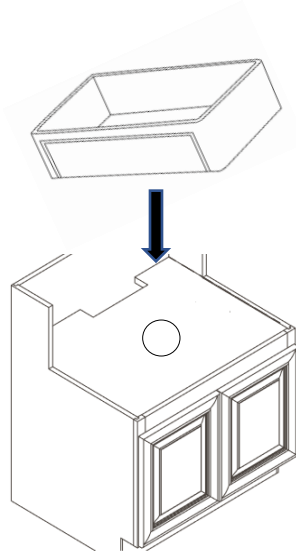
- Option 1:** Cut a $\frac{3}{4}$ " piece of plywood that will serve as the deck for the sink to rest on. Note: Make sure you cut holes in the plywood for access to water lines, drain, garbage disposal, etc. Secure plywood panel to the wood studs fastened to the side of the cabinet in step 2 using wood glue and wood screws.



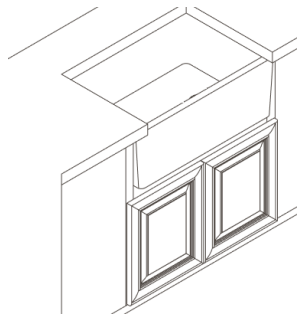
- Option 2:** Attach 2 X 4's to the wood studs fastened to the cabinet sides in step 2 using wood glue and wood screws.



- Lower the sink onto the plywood (option 1) or onto the frame assembly (option 2). Ensure sink is level, and the drain holes in the sink line up with the openings in the plywood or frame assembly.



5. Apply a bead of silicone sealer to the top of the sink rim and cabinet.
6. Place the countertop on top of the cabinets. Ensure it is level.



7. Wipe off any excess silicone before it dries.

Care and Cleaning

- To maintain the appearance of this product, we recommend it should be cleaned using a soft cloth and a non-abrasive cleaning product, a simple solution of warm water and a mild liquid detergent will suffice. Ensure that the product is rinsed thoroughly and wiped dry.

NOTE:

- Never use any form of abrasive cleaner or abrasive applicator as they can scratch the surface. Any other cleaning action will invalidate your warranty.
- The gloss surface of the sink is susceptible to damage from sharp and metallic objects. Try to avoid metal objects coming into contact with the surface by using protective plastic sink liners, wire bottom grids, and drains with non-abrasive bases.

Warranty

Winpro® fireclay sinks are covered by a 10 year limited warranty. This warranty extends to the original purchaser only. This warranty is not transferable, between homes or owners and is only applicable to residential use. Winslyn Industries, LLC warrants this product against defects due to material or craftsmanship error during the warranty. We will provide replacement parts at no charge under normal use and service. If we are unable to provide a replacement, we may elect to refund the purchase price in exchange for the return of the product. We provide you with complete instructions on how to maintain and care for this product. We will not be responsible for due to lack of maintenance or proper use. The original sales receipt, order number, and/or proof of purchase must be presented at the time of the warranty claim, without exception. As noted in the instructions we recommend the use of a professional installer or professional contractor. Winslyn Industries, LLC will not be held responsible for any damage or product failure due to improper installation, misuse, or failure to use a licensed professional. This warranty only extends for household product use, this warranty will be void for commercial use of this product. This warranty will not be applicable if product is purchased from an unauthorized seller. By purchasing this product, buyer agrees that we are not liable for incidental, consequential, or special damages associated with the return, replacement, installation or use of your product. This includes freight costs, labor, travel time, lost profit, home damages and other contingent liabilities and costs (including, without limitation, costs associated with experts, investigations, analyses, attorneys and other professionals and services). Our warranty is a comprehensive and explicit limit of liability, and all items outside of it are not addressable by or the responsibility of Winslyn Industries, LLC. Certain states have variances regarding implied warranties and in those situations, we remain fully compliant. We make no implication that products comply with any or all local building or plumbing codes. It is the consumer's responsibility to determine local building code and plumbing code compliance. Please write or contact us at:

Winslyn Industries, LLC
1232 Hardt Circle
Bartlett, Illinois 60103
Email: support@winslyn.com