

Installation Instructions

Wireless Motion Sensor LED Spotlight

MB360XT

Thank you for purchasing the Mr Beams® Wireless Spotlight. We are committed to eliminating darkness using the latest in Light-Emitting Diodes (LEDs). LEDs are the most efficient and durable light sources available. We are certain that your light will contribute to a safer environment and provide light where you need it at a very reasonable cost.

What is included per light:

- 1 Wireless Spotlight
- Mounting Base
- 3 Screws
- 3 Anchors

What you need to install:

- 1 Small Screwdriver
- 3 D-Cell Alkaline Batteries

Spotlight Features:

Motion/Light Sensor: Light instantly turns on when it detects motion from up to 30 feet away. The light sensor conserves battery life by preventing the light from activating in daylight.

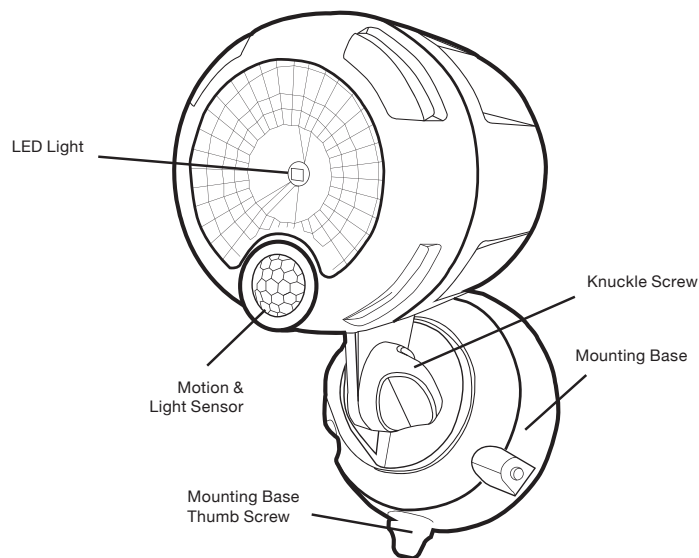
Auto Shut-off: Light shuts off automatically after 20 seconds if no motion is detected.

Bright LED: 200 Lumens covers up to 600 sq ft.

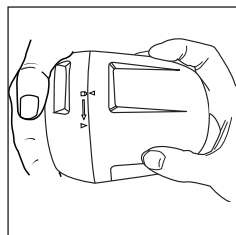
Durable, Weather Resistant: Tight seals and UV resistant material allow the light to work in all weather conditions.

Tips:

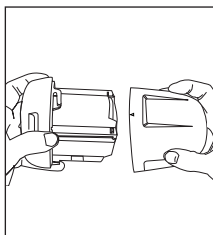
- Use only new alkaline D-Cell batteries with 1.5V rating.
- Do not mix old and new batteries. If batteries are not new, it may cause the light to malfunction.
- Install batteries with polarity in correct position.
- Light may activate when batteries are inserted. Simply take light into a dark room. Allow batteries to settle, then test activation.
- **If your light will not turn off, it means that it is time to replace the batteries.**



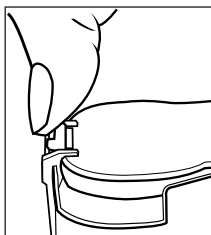
NOTE: Light sensor only allows Spotlight to activate in darkness. We recommend you test in a dark room or closet.



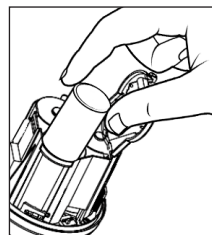
1. Remove the face of the light by rotating counter-clockwise as shown above.



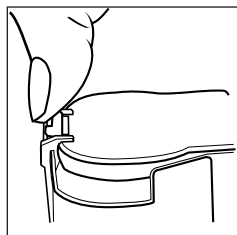
2. Pull face out from cup to reveal battery compartment.



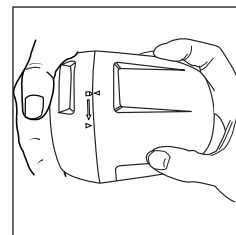
3. Push in battery door tab and lift up to release.



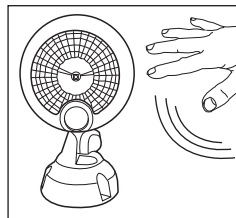
4. Insert 3 D-cell batteries with correct polarity. Make sure the flat ends of the batteries are against the springs.



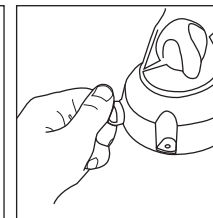
5. Attach battery door by matching the tabs to the rectangular holes and then push down on front until the tab clicks into place.



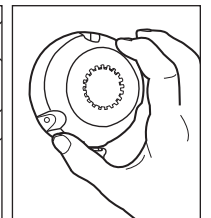
6. Match arrows then turn clockwise. Make sure unit is securely closed to activate weatherproof seal.



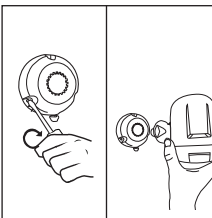
7. Test the motion sensor in a dark room for up to 5 minutes. When you re-enter the room, the light should activate with motion.



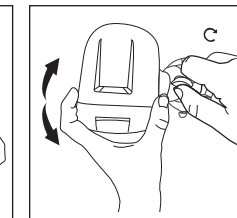
8. Remove mounting base by turning thumbscrew counter clockwise. Pull mounting base off stem of light.



9. Determine mounting location and mark the pilot holes. Use a drill to insert anchors before screwing in the base.

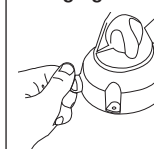


10. Drive the screws through the holes on mounting base. Insert the stem back into mounting base and tighten the thumbscrew.



11. Loosen the knuckle screw located on the stem of the light, to point the light in desired direction. Then tighten the screw to secure position.

Changing Batteries



When changing the batteries, remove the stem of the light by twisting off the thumbscrew. Note: never change batteries on ladder; doing so can result in injury.

Battery Caution:

- 1) Do not mix old and new batteries
- 2) Do not mix Alkaline, Standard (Carbon-Zinc) or Rechargeable (Nickel Cadmium) or (Nickel Metal Hydride) batteries
- 3) Do not dispose of batteries in fire
- 4) Batteries should be recycled or disposed of as per state and local guidelines