



Job Name _____	Item # _____
Location _____	
Engineer _____	Contractor _____
PO # _____	Tag _____
Representative _____	

1-1/4 IN. BRASS BOTTLE TRAP IN CHROME TECHNICAL SPECIFICATION

SPECIFICATIONS

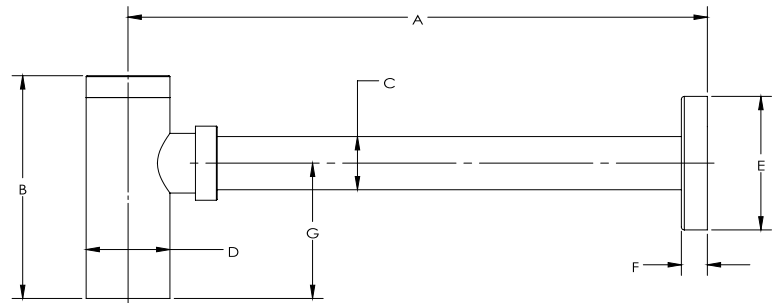
1-1/4 in. Bottle Trap provides a contemporary alternative to bathroom sink plumbing. It is ideal for pedestal and vessel sink installations where the tubular is exposed. Dearborn is known for providing superior quality and products designed with the plumber in mind.

APPROVALS AND LISTINGS



DIMENSIONS

[A]:	13.62"
[B]:	5.24"
[C]:	1.25"
[D]:	1.97"
[E]:	3.14"
[F]:	0.61"
[G]:	3.18"



PRODUCT SELECTOR

✓	Product Number	Description	Ctn. Wt.	Ctn. Qty.
	HDC9688	1-1/4 in. Brass Bottle Trap in Chrome	4.115625 lbs.	3

Access BIM/Revit content through www.oatey.com