



Installation & Assembly Instructions

LB18-S - (2) 18" x 36" Stainless Steel LocBoard®(s)

Read all instructions completely before installing. Should you have any questions about your installation, please call Customer Service at 440-248-5480

- Boards can be positioned side by side or in separate locations in vertical or horizontal mounting positions.
- LocBoards fasten directly to concrete, solid wood and hollow wall structures without the use of furring strips.
- LocBoards are designed with internal mounting flanges that keep mounting hardware hidden from sight and adds to the board's structural integrity and holding power.
- If installing to bare studs you will need to install wood headers before completing installation.
- Mounting hardware is included to complete your installation.

Hardware included for installation:

12 Each #8- 2" Stainless Steel Screws and #8 plastic wall anchors.

Tools needed for Installation

Level, Marker, 7/32" standard or Masonry Drill bit, 7/64" Std. Bit for wood studs, #2 Phillips Head Screwdriver, and a power drill.

LocBoard Installation:

For Drywall, Hollow Concrete Wall installation: Use (12 each) plastic drywall anchors and #8 Phillips head stainless steel screws (SUPPLIED WITH THIS SYSTEM). If installing to bare studs you will need to install wood headers before completing installation using wood screws only. NOTE: Always install 1 board at a time.

1. Select wall location for your LocBoards and the desired vertical or horizontal mounting pattern you wish to mount in. When selecting a location for mounting always make sure that mounting locations do not fall in line with, are adjacent to, or interfere with any internal or external electrical wiring, wall mounted or built-in electrical appliances, heaters, gas lines, ductwork or plumbing inside of wall, or are located on the opposite side of any wall surface from where you are mounting. If you are unsure, please consult a professional before proceeding with installation.
2. (Using Images on Back) There are three screw holes in each mounting flange on the back of your LocBoard that are accessible through the square holes on the front.
3. Place 1 LocBoard with mounting flanges flat against wall surface. While using a level to make sure your board is straight and squared, looking through the square holes on the front of the board, mark the centers of all 6 screw holes onto your wall surface. Note: Installation for first board should be completed before marking mounting holes for the second board.
4. Pre-drill holes for #8 wall anchors marked in Step 3 using 7/32" standard or masonry drill bit depending on wall surface. If you hit a wood stud stop drilling and using a 7/64" drill bit, create a pilot hole for the wood screw. Note: Avoid over drilling holes. (Plastic wall anchors should fit snug.)
5. Insert plastic wall anchors in each hole drilled in Step 4 except where you drilled 7/64" pilot hole for wood stud.
6. Align mounting holes in wall surface with screw holes in back flanges. Insert wood screws through the front square opening and into pre-installed plastic wall anchors. Tighten all screws.

Please contact Customer Service with any questions at:

30700 D Carter Street · Solon, OH 44139 · (P) 440.248.5480 · support@tritonproducts.com

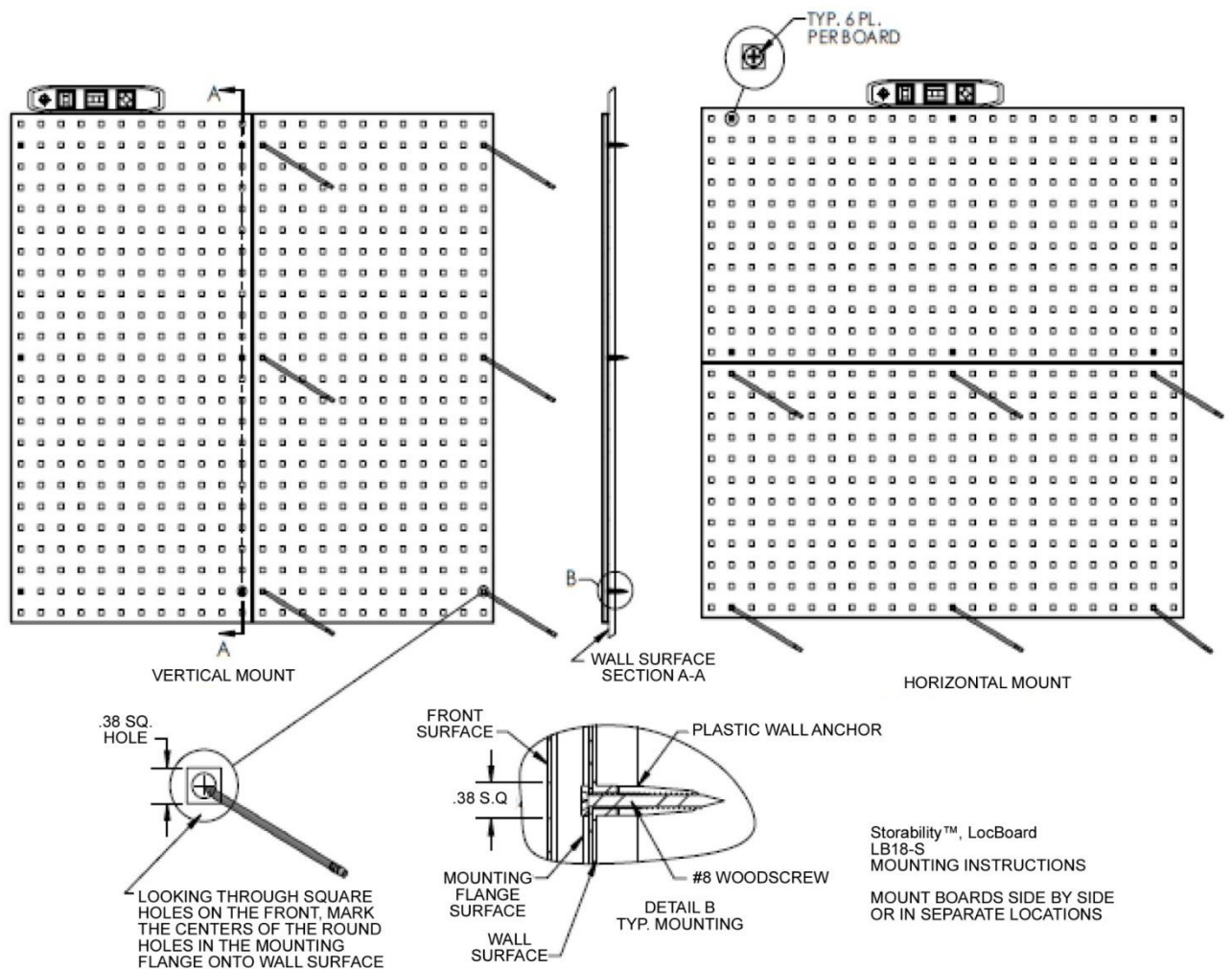
For a full line of products visit www.tritonproducts.com

Installation & Assembly Instructions

The head of each screw should not be visible and will be tight against inside surface of each mounting flange.

- Repeat Steps 2-6 for second LocBoard installation.

Hook Installation: Insert hooks back locking tabs into front square openings of tool board, slide securely into place and complete installation by installing the required number of LocScrews system with hooks. (Hooks NOT SUPPLIED WITH MODEL LB18-S.) Each LocHook has the unique capability of being securely mounted vertically or horizontally. LocBoards must be securely fastened to sound wall structures to support heavy loads.





Installation & Assembly Instructions

LIMITED LIFETIME WARRANTY: Triton Global Products are backed by a Limited Lifetime Warranty to the original owner that our products are free from defects in material and workmanship. If a product is defective when used as intended under normal conditions, Triton will replace the product, send a replacement part or issue a refund (at our option) when the consumer provides the original proof of purchase along with a full description of the defect, to: Triton Global Products 30700 -D Carter Street Solon OH 44139 All of our steel products have been engineered to last a lifetime.

EXCLUSIONS TO LIMITED LIFETIME WARRANTY:

- Excludes Normal Wear and Tear.
- Excludes Cosmetics and Aesthetics.
- Is Void if Products were improperly installed or used incorrectly (i.e., Not per Included Instructions).
- Excludes Plastic and any other Non-Metal based Products.
- Limited Lifetime Warranty is Non-Transferable and only applies to the original purchaser.
- Original Proof of Purchase is required for all warranty claims.