

LG WashTower™ Pre-Delivery Cheat Sheet

STEP 1 | Watch the Measure First Video

The video explains how to **Walk the Path** to ensure the unit will fit through doorways and can be properly moved into the designated space. It also covers how to determine fuel type and required accessories.



STEP 2 | Confirm the Customer's Fuel Type

Gas Requirements



Electric Requirements



IMPORTANT! For Electric Dryers, customers need to know whether they have a 3-prong or a 4-prong outlet to purchase the correct cord. Most electric power cords are 4-6 ft long. Be sure to purchase a cord long enough to reach from the top of the dryer to the outlet.

STEP 3 | Confirm All Required Accessories Have Been Purchased

Click your Model type to view required accessories and the Customer Checklist.

Gas Models

With Steam Dryer

- WKGX201HBA
- WKGX201HWA
- WSGX201HNA

Without Steam Dryer

- WKG101HVA
- WKG101HWA

Electric Models

With Steam Dryer

- WKEX200HBA
- WKEX200HWA
- WSEX200HNA

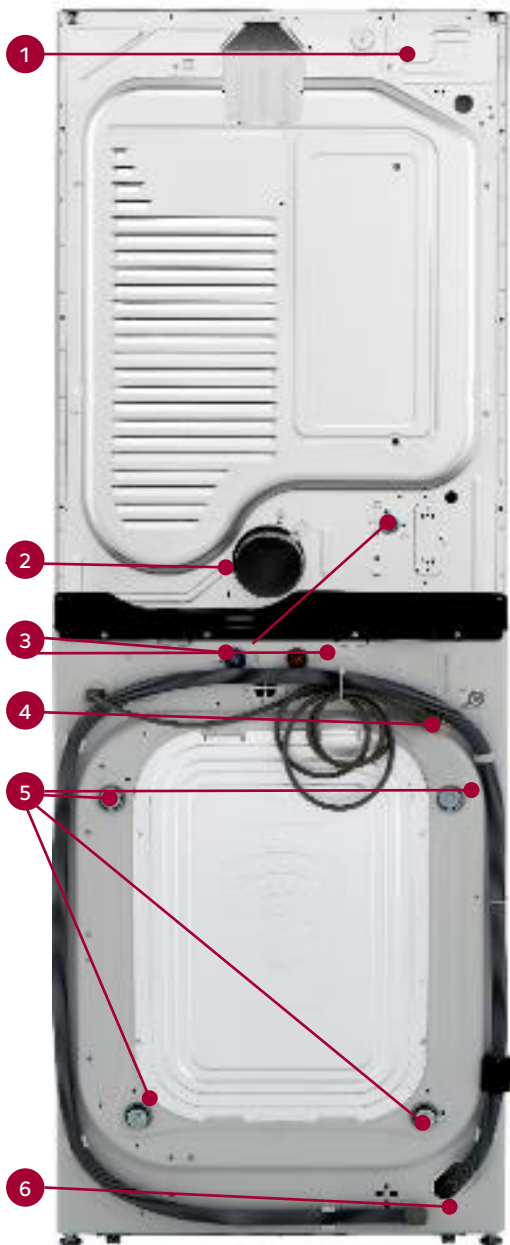
Without Steam Dryer

- WKE100HVA
- WKE100HWA

LG WashTower™ Customer Checklist

Models without Steam Dryer

- WKE100HVA
- WKE100HWA



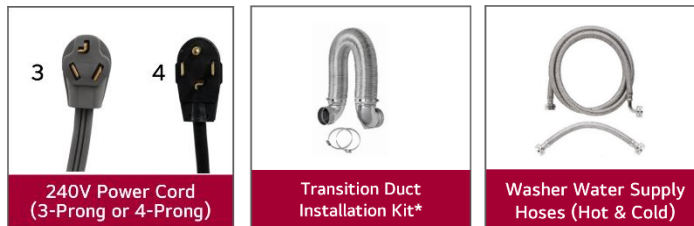
1 | Measure First & Confirm Fuel Type

- Watch Measure First Video
- Confirm 120V, 15-Amp Outlet (For Washer)
- Confirm 240V, 30-Amp Outlet (For Dryer)
- Locate the Water Line and Shut Off Valve



2 | Purchase Required Accessories

IMPORTANT! These accessories are sold separately and are required for proper installation.



3 | Follow Delivery Day Install Steps

- 1 Install 1 Power Cord in Block Access Panel
Check if 3 or 4 for 240V, 30A Outlet
- 2 Install Ducting to Dryer Exhaust Vent Outlet
- 3 Install 2 Hoses for Hot and Cold Water Inlets
- 4 Remove 4 Shipping Bolts Prior to Installation
- 5 Plug 1 power cord for both Washer & Dryer into 120V, 15-Amp Outlet*
- 6 Install Drain Hose
- 7 Activate **ThinQ Care**
Download the LG ThinQ® App to activate ThinQ Care.