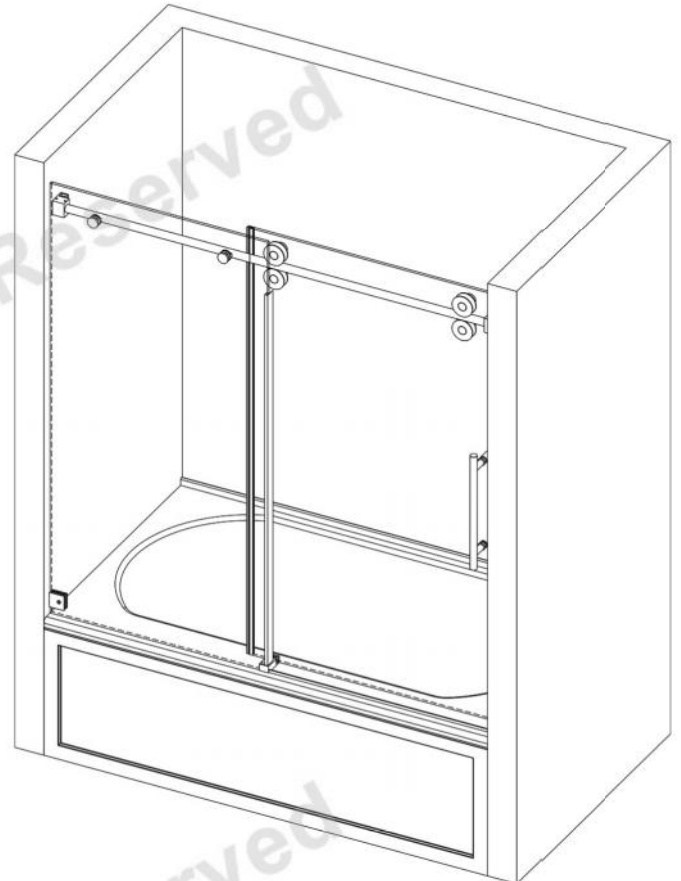
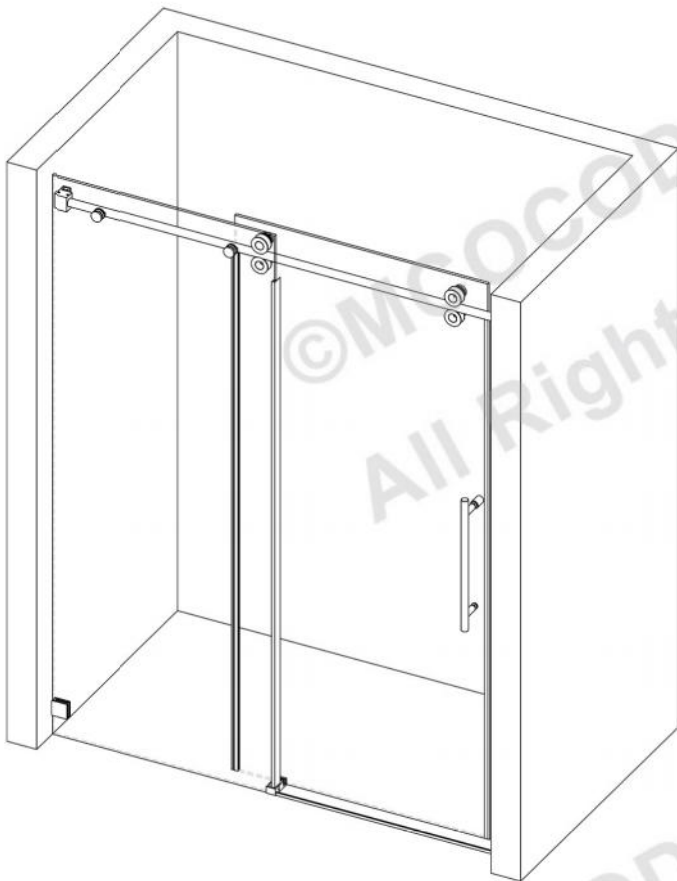




Shower / Tub Door Installation Instructions



MODEL:

SS04

HARDWARE FINISH:

CH-CHROME
BR-BRUSHED NICKEL
BL-MATTE BLACK
BG-BRUSHED GOLD

GLASS TEXTURE:

CLEAR

Please review this manual before installation.

Customer service/Tech Support:

manager10@mcocod.com

Mon-Sun 5:30 AM-11:30 PM EST.

470-926-8618

321-946-6293

Mon-Fri 8:30 AM-5:30 PM PST.

CATALOG

- 1 Product Structure Show
- 2 Parts Listing and Detail
- 5 Preparation
- 7 Tools Required
- 8 Installation Steps
- 14 Inspection and Maintenance
- 15 Troubleshooting Guide
- 16 Glass Info and Video Link

SS04



PARTS LISTING

SS04

NO.	Name	Picture	Qty	NO.	Name	Picture	Qty
①	1 Slide Glass 1 Fixed Glass		2	⑩	Fixed Glass Seal		1
②	Guide Rail		1	⑪	Anti-splash threshold		1
③	Roller		4	⑫	8mm Wall Plug		3
④	Glass Fastener		2	⑬	Screw ST5x40		3
⑤	Wall Bracket		2	⑭	Glass Bracket		1
⑥	Anti-collision block		2	⑮	Punch Template		1
⑦	Guide Block		1	⑯	Allen Key		1
⑧	Handle		1				
⑨	Narrow Seal		2				



Please keep this manual and order invoice for future reference or get replacement part if necessary.

PARTS DETAIL



Aluminum punch template

(If missing or broken, please refer to page 8 for punch data.)



Wall Bracket



Anti-collision block

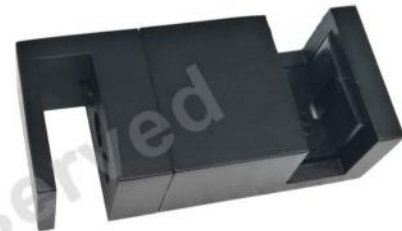
Decorative
Cover



Roller



Handle

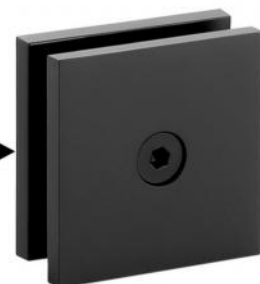


Guide Block



Glass Fastener

Decorative Cover



Glass Bracket

PARTS DETAIL



Guide Rail



Door Seal



Glass



Anti-splash threshold



Screw & Allen key
The extra ST5x40 is spare

PREPARATION

- 1 Please check all parts for transport damage and the qty of each part base on Parts Listing. If any part is damaged, has surface defects, missing or wrong parts, please contact our customer support dept. Please provide order number, invoice, or other purchase proof to identify the original order. Beware of remaining nails after opening the box and avoid bumping and towing when you taking out parts.
- 2 Please consult your local building regulations to check compliance. We are not responsible for your item's compliance with local building regulations.
- 3 All measurement and installation should do after the wall and shower base were completed. Make sure your threshold/tub edge is horizontal. Curbless shower can be applied. Recommended Pro licensed contractor installation. Protective gear is required, e.g. gloves, goggles.
- 4 Before installation, make sure that the surface of the wall is flat and strong enough to support the total weight of the unit. Removal of obstructions on both walls and threshold. Make sure that neither side of the wall offset more than 1/4". Use level to verify that your walls are within 1/4" out of plumb. Irregularly level wall surfaces or too much offset would cause serious problems with the installation.
- 5 Protect all major surfaces of the product when installing and cutting. Do not place glass directly on the rough floor or leaning against the wall, place it on the cardboard or smooth plank before installing it. Remove corner protectors according to the steps, don't remove them in advance.
- 6 Drilling hole into the threshold is required to install this shower/tub door. MIN. threshold depth requirement for installation is 2-1/2 in. then the guide block will protrude inward about 1/4 in. We recommended to purchase a finished shower base with threshold depth of no less than 2-1/2 in. to match it.

- 7 This instruction will use the installation of shower door as an example. The steps for installing tub door are the same. If you choose left opening installation, all hardware in mirror counterpart to right opening.
- 8 Understanding shower door construction and parts installation locations.(Please refer to page 1~4)
- 9 Cutting the guide rail can only be done on the side where sliding glass is installed, i.e. the side with no glass fixing holes on the guide rail.
- 10 For tile wall, you'd best to replenish some mildew-resistant silicone at the seams to avoid leaks.
- 11 Do not cut, polish, etc. to destroy the original appearance of the glass as this will void the warranty and damage the glass.
- 12 Heavy item! Handle it carefully is required during installation. Don't step on the glass. When you take the glass out of box, don't drag it out, please lift it out carefully. Glass should be placed on smooth board or cardboard, preferably not leaning against the wall. After removing the corner protections, don't hit the glass corner. We recommend that 2 adults should be involved in the installation.
- 13 You can watch the installation video for quick overview of the product installation, check the online product page you purchased(HomeDepot/Shopify/Amazon/Wayfair). Please review this manual carefully, the video is for demo purposes. Some parts and installation steps have been improved, please refer to this manual steps first. You can also search for "MCOCOD SS04" on YouTube and find the video posted by "MCOCOD Shower Door"
(Video Link:<https://youtu.be/hNeOuzxqyYw>)



NOTE: Please follow this instruction to install the item, non-compliance may result in glass damage or serious personal injury.

TOOLS REQUIRED

(Please bring your own tools)



(we offer)
Aluminum punch template



Spirit level



Tape measure



Power drill



Screw driver



Drill Bits 5/16"



Pencil



Rubber hammer



Hacksaw



Silicone Gun
Modified Silane(Silyl) Polymer

INSTALLATION STEPS



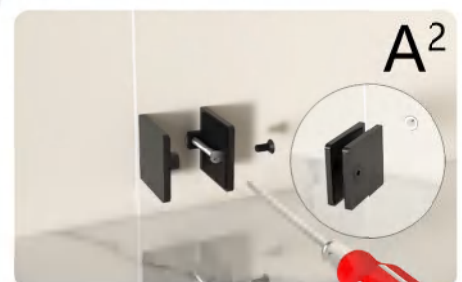
- ① Punch rules: the bottom fixed glass bracket perforation position needs to be 1" outside the vertical surface of wall bracket punch position, to ensure that the fixed glass is installed on the outside of guide rail. If punch template missing or broken, please refer to step 2 of punch data. Choose your opening direction according to the picture above. Prepare to draw fixed glass side wall point, please put the punch template vertically close to the wall, the bottom needs to touch threshold, use level to confirm the vertical and draw the two position of the punching points. Sliding glass side wall only need to draw top wall bracket punch point.

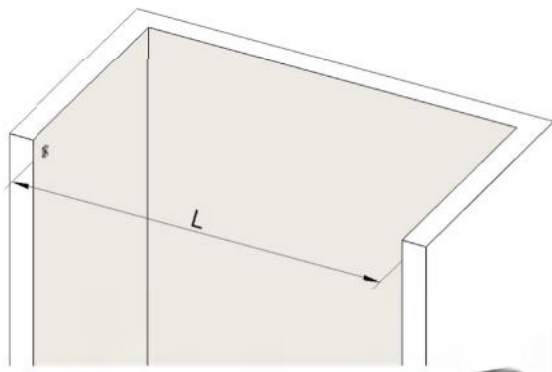
The image shows two diagrams of window frames, one labeled 'Right-opening' and one labeled 'Left-opening'. The diagrams include dimensions for the punch points: a vertical distance of $\phi \frac{5}{16}"$ from the top and a horizontal distance of 1" from the side wall. The bottom dimension is $5\frac{7}{8}"$. The table below provides the product height and the corresponding X dimension for each opening direction.

Product height	X
60"	$56\frac{1}{4}"$
66"	$62\frac{1}{4}"$
72"	$68\frac{1}{4}"$
76"	$72\frac{1}{4}"$
79"	$75\frac{1}{4}"$

*Same wall bracket punching data for both walls

- ② The vertical surface of wall bracket drilling position should not be less than 1-3/8" away from exterior vertical surface of your threshold. Check the drawn points on both side walls against the table data. Drill the holes according to the drawn holes, making sure that there is no offset of the holes. Then install two wall bracket bases and glass bracket on the holes, use part 12 and 13, vertical mounting wall bracket base.

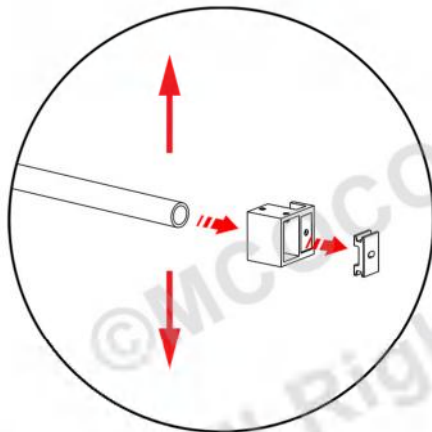
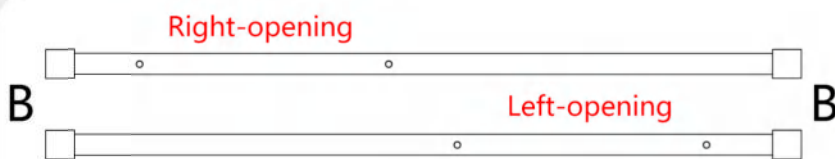




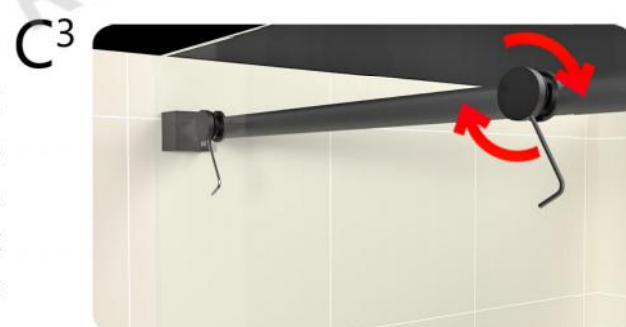
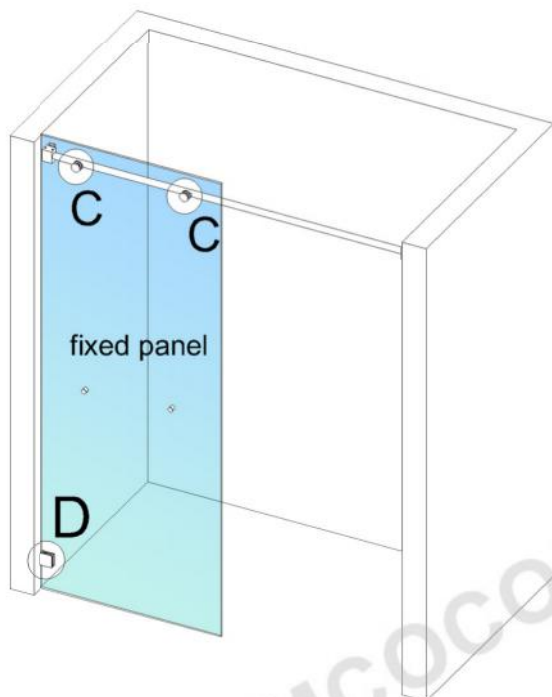
Base nut



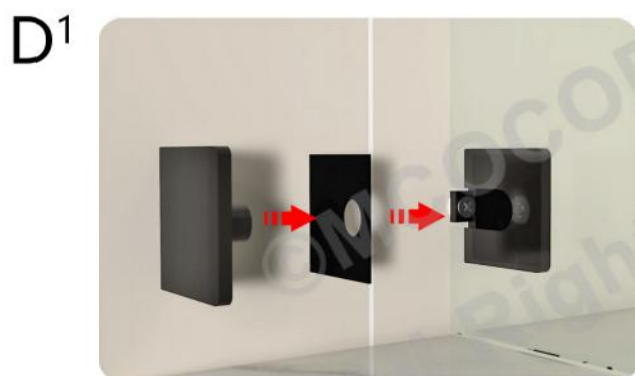
- ③ Please measure shower opening at the top, where guide rail is mounted. The final length of guide rail will be equal to shower top opening width minus 1-1/4 in. then cutting guide rail according to measured data. Please wear protective gear when you cutting, be careful not to damage track finish. **Cutting must be made from the unperforated end of guide rail. Can be cut several times to match the opening, avoid cutting too short and causing failure.** After cutting, use wire or thin wooden stick to push the glass fastener base nut into the corresponding hole, then fix the screws with Alley key based on pictures. Decorative cover is not installed for now.



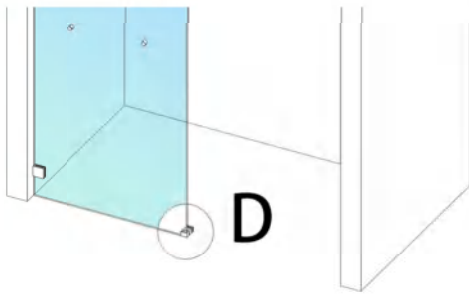
- ④ Loosen the fixing screw at the top of wall bracket connection to avoid blocking the insertion to guide rail, without unscrewing it completely. Place wall bracket connections to the sides of guide rail and lift them to the level of wall bracket base, then push wall bracket connections on both sides to cover wall bracket base. **Please note that the connection side with notch is near wall bracket base, guide rail with holes is the fixed glass side, turn guide rail so that it faces outside of your shower. Wall bracket connection with anti-collision grooves side should be located on the inside of your shower, note the orientation of these parts.** Finally, tighten the wall bracket screws on both sides to lock guide rail, then push two anti-collision blocks into the grooves of wall brackets on both sides.



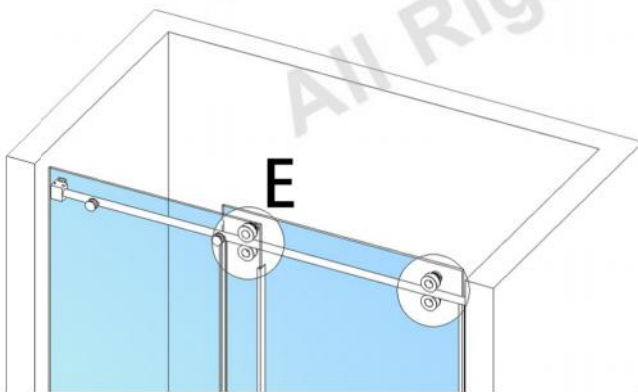
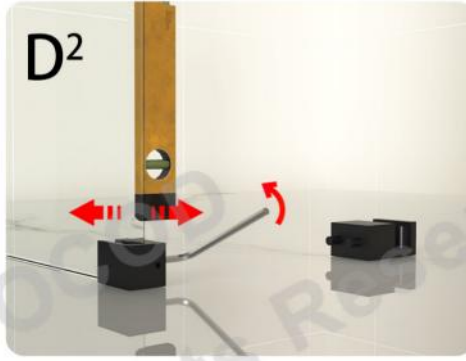
- ⑤ Installation of fixed panel/glass: Remove fixed panel corner protections. Remove the decorative cover of glass bracket, then put the fixed glass into the hole and tighten the decorative covers, don't miss the washer in the middle. Fixed panel can be adjusted slightly to match wall offsets.



- ⑥ Tighten glass bracket decorative cover to complete the installation of fixed panel. If you have not finished drilling the hole for glass bracket, please drilling first.

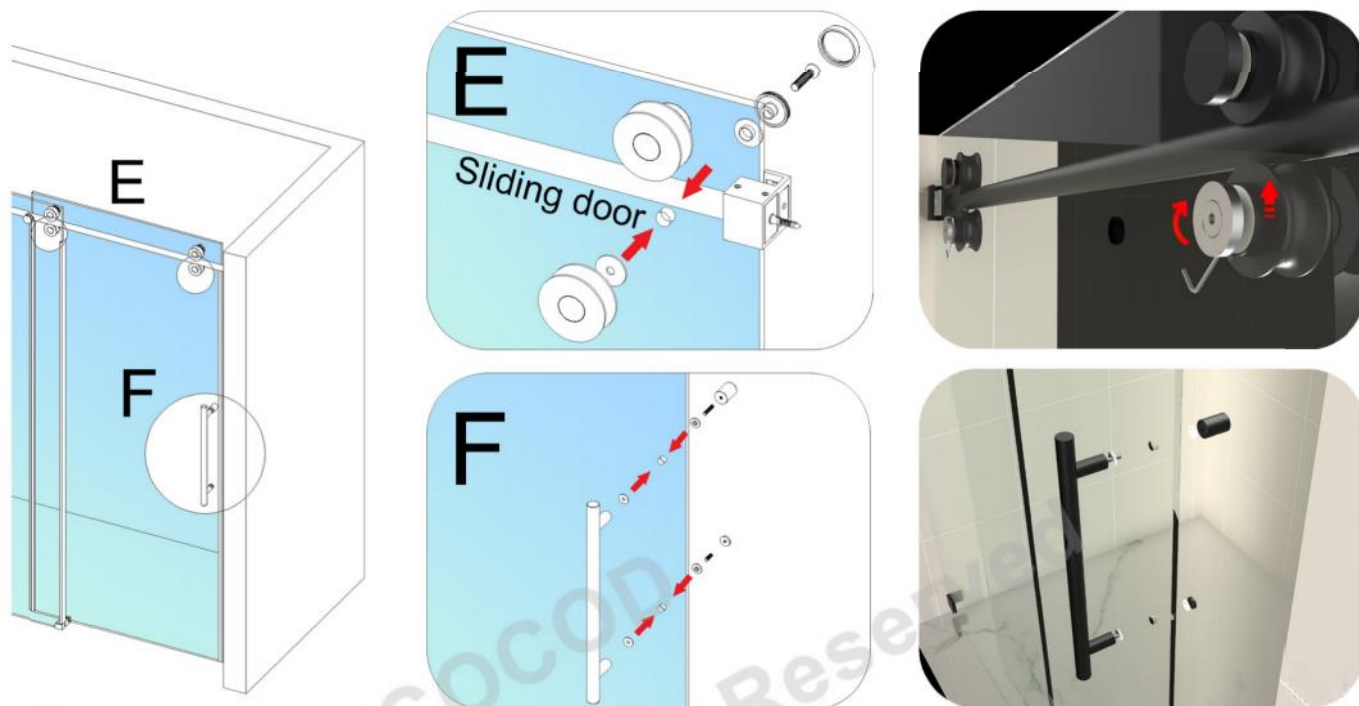


⑦ Assemble the guide block as shown and fix it to the corner of fixed panel. Then use a level to ensure that fixed glass is vertical. Please note that the protruding end of the guide block should be face inwards for subsequent installation of sliding glass. No need to drill hole on the threshold to install the guide block.

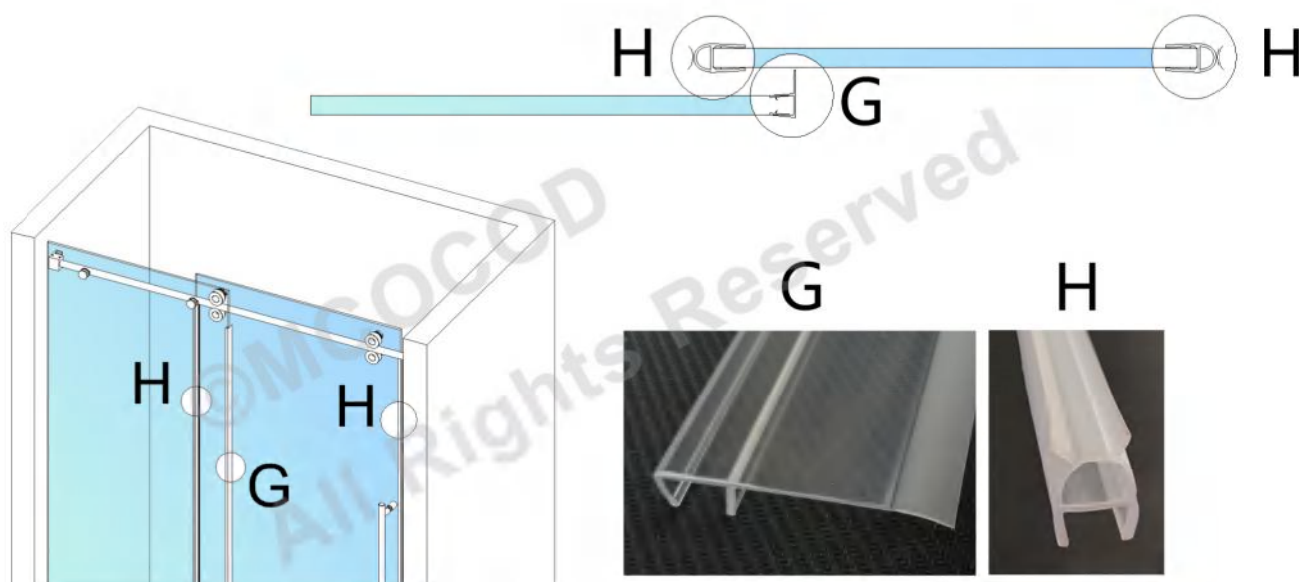


⑧ Unscrew the decorative cover of all the rollers and separate the rollers with Allen Key. Install the two rollers in the two holes above the glass as shown then tighten the set screws. Hang the sliding glass on the inside guide rail, then use Allen Key to loosen the roller screws a little. Keep the glass bottom enters the tracks of guide block. Use Allen Key to adjust the hole on the side of rollers to adjust the level and height of sliding glass, make sure that sliding glass is level and then tighten the screws, tighten decorative covers of roller at last. Sliding glass can be allowed to tilt a little to match non-vertical wall, and the remaining offset allows door seal to fill in.

Please note that to adjust the height of sliding glass, you need to make sure that the bottom of sliding glass will not touching the groove bottom of guide block, to avoid unsmooth sliding.



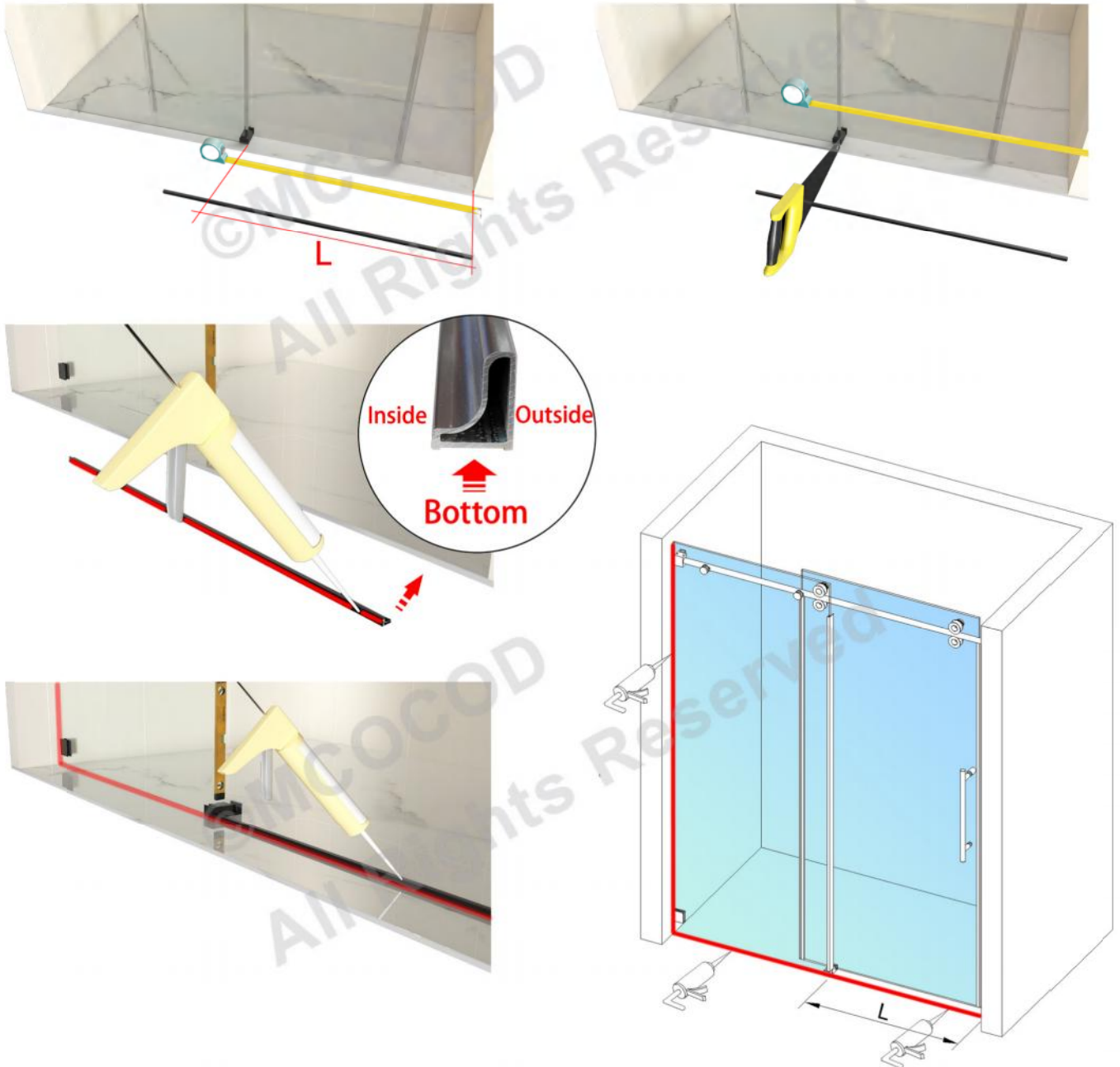
- ⑨ Use the same way to install the other two rollers into the two holes of sliding glass below guide rail, loosen roller screws a little, then use Allen key to adjust the height to touch guide rail bottom. Tighten the fixing screws of rollers. Please push and pull slowly to test the sliding effect, be careful not to pinch your hand. Tighten the decorative cover of bottom rollers after confirming it works properly, otherwise you need to readjust the height of bottom rollers. Install handle to the corresponding holes as shown, the position of handle is interchangeable inside and outside.



- ⑩ Remove sliding glass corner protections. Install the door seal as illustrated. **All door seals should be installed starting from the bottom and working upwards.** Align the notch on the side of door seal and press on the seal bubble area to snap on the sliding glass, wide door seal sweeps need to be oriented towards the center of shower door. **If roller scratches against wide door seal, please adjust the height of the door seal or trim the door seal top, the bottom of door seals should not reach your threshold.**

- ⑪ Cut anti-splash threshold according to the bottom width of your walk-in opening, do not damage its finish when you cut it. Apply mildew-resistant silicone to the groove side of anti-splash threshold. Make sure anti-splash threshold will not protrude from your threshold. Check the installation stability and the fixing screws of each part. You can push and pull slowly to test the sliding effect, just don't touch anti-splash threshold.

Clean up the garbage, dry the water, stains on glass and hardware with soft cloth. Oil, sweat, etc. remaining on hardware can be removed with a little anhydrous ethanol or cleaner. Avoid sources of ignition and be sure to ventilate when using ethanol. Finally, applying mildew-resistant silicone on the side of fixed glass and anti-splash threshold. Punch template can be discarded. Installation completed!



Note: Please dry for 24 hours after the mildew-resistant silicone is applied before use.

PRODUCT INSPECTION

- 1 Check the level and stability of guide rail.
- 2 Check the fixing screws of rollers, glass bracket. Check that glass fastener decorative covers are tightened.
- 3 Check the sliding door slides smoothly without noise. Door can be locked in closed position.

SHOWER DOOR MAINTENANCE AND CARE

- 1 **Glass:** To ensure the lifetime of the glass, we recommend clean with soft cloth after each use. Rinse and clean the glass with soft cloth or squeegee to prevent soap, hard water, water stains from building up and corroding the glass. To protect glass surface and coating: Do not use abrasive cleaners or other abrasive cleaning products. Do not use brushes, abrasive sponges, wired brush or other with sharp, rough bristles tool that may scratch the glass surface. You can use some neutral, mild detergent. Properly reduce the cleaning agent's frequency of use to prolong easy-clean performance.
- 2 **Hardware:** To ensure a durable finish, wipe and clean the hardware with soft cloth after each use. Priority areas are handles, guide rail and guide block, the rest can be cleaned less frequently depending on the use situation. Cleaning methods are the same as the glass section. In addition, do not use cleaners that contain ammonia, bleach or acids, which may corrode the finish. If accidentally used, rinse the surface ASAP to prevent damage to the finish. After cleaning the finish, wipe dry with soft cloth.
For oil stains, deposited hard water stains, you can use a little anhydrous ethanol or highly concentrated alcohol to remove them. Please avoid fire source and open the window for ventilation. Regularly inspect door components and clean them promptly.
- 3 Do not let the shower water directly wash the bottom of sliding door and sliding glass body, otherwise it may result in water leaks from the bottom of sliding door.
- 4 **Regular Inspection:** In order to prolong lifetime of shower door, please check the glass and all hardware regularly for shifting/damage/noisy sliding/screws loose, to void incorrect installation cause damage beyond control. If you have any questions, please contact us.

TROUBLESHOOTING GUIDE AND NOTE

If not installed correctly, the following issues may arise.

Shower doors don't close tightly issues:

Solution: First, please check that anti-collision blocks are installed on both sides, they will hold sliding glass to keep closing. Then use level to check your guide rail and glass level status, if not installed level, you can adjust top rollers to adjust the sliding glass level and height. Even if your guide rail is a little tilted, anti-collision blocks will help it, if guide rail is tilted severely, you may need to re-drill.

Before adjusting the height and level of sliding glass, we recommended to adjust the height of bottom rollers to avoid affecting the adjustment of top rollers. Adjustments completed and then restore the rollers.

Water leaks in door bottom area:

Please confirm anti-splash threshold silicone seals well without leaking, then following adjustment may need to be done.

1. Adjust the angle of the shower head, avoid the shower water directly wash the bottom of sliding glass and sliding glass body.
2. Please adjust the height of top rollers to reduce sliding glass height a bit. Complete these 2 steps would solve it, if there still leaks please contact us.

Please note that to adjust the height of sliding glass, you need to make sure that the bottom of sliding glass will not touching the groove bottom of guide block, to avoid unsmooth sliding.

Info about Glass:

Treated with Enduro Shield on both sides
Low-iron Tempered Safety Glass
16 CFR 1201
CAN/CGSB 12.1-2017
ANSI Z97.1-2015
3/8"UA SGCC

The black/white lettering on the corner of sliding glass is glass info, which is mandatory printing. Thank you!

Customer Service:

Mon-Fri **470-926-8618**
8:30 AM-5:30 PM PST:
Mon-Sun **321-946-6293**
5:30 AM-11:30 PM EST: **manager10@mcocod.com**

Installation Video:

<https://youtu.be/hNeOuzxqyYw>

You can also search for "MCOCOD SS04" on YouTube and find the video posted by "MCOCOD Shower Door"

Return Address:

- 4800 Little John St.**
Baldwin Park, CA 91706

Please contact our customer service to get replacement or confirm the return steps before returning.