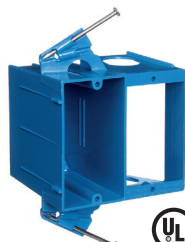
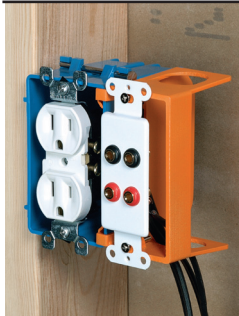


Low Voltage Structured Cable Management Systems

Leading the way in making low voltage cabling installation faster and easier



SC200DVR
UL LISTED E42728

Dual Voltage Box/Bracket

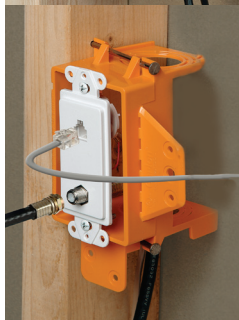
Here's a smart alternative where you would normally use separate high and low voltage boxes. Designed to fit a standard two-gang faceplate, this component combines an electrical box and low voltage bracket into a single unit for fast, easy installation. No alignment tools are required, and easy nail-on mounting provides precise placement and a professional finished appearance.



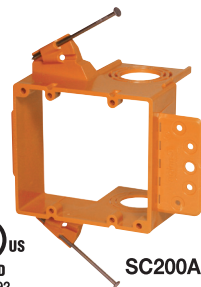
SC100SCR
UL LISTED E216492

Low Voltage Add-On Bracket

This low voltage bracket provides a low voltage outlet next to a previously installed high voltage outlet. Great for both new construction and rework, it attaches easily to most electrical boxes, and is designed to fit a standard two-gang faceplate.



SC100A
UL LISTED E216492



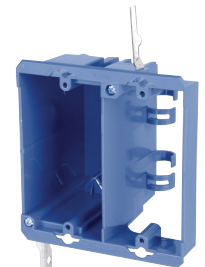
SC200AR

Low Voltage Brackets

Here's the fast installation choice where only low voltage is required. Designed to fit a standard one or two-gang faceplate, these low voltage brackets feature an easy nail-on mounting or screw-in bracket, while a hard shell provides increased durability and no racking.



SCDVR
UL LISTED E42728



E-18-4-DVR



SC200RR
UL LISTED E42728



SC100RR
SC100RR-CP



Old Work Brackets

Carlton Old Work Brackets are designed specifically for the installation of low-voltage devices such as a cable television, datacommunications or telephone jacks in an existing wall. The Backless Box design accommodates the space and bend radius requirements of coaxial or data/communication cables. It also eliminates the need for metal plates, lags or screws, and can be installed vertically or horizontally. Available in one- and two-gang styles.

Low Voltage Divider Plate

For applications where a combined high and low voltage closed back box is needed, such as placement in a fire-rated wall, we offer our Carlton SuperBlue™ two-, three-, and four-gang wiring boxes with a slip-in-place divider to give you the split box you need for the low voltage outlet.

SKU#	Part Number	Description	Case Pack	UPC Code
196279	SC100A	1 Gang Low Voltage Bracket	24	034481161882
196653	SC200DVR	2 Gang Dual Voltage Box	4	034481161929
198424	SC100SCR	1 Gang Low Voltage Add-ON Bracket	6	034481161936
198927	SCDVR	Orange Super Blue Divider	10	034481100157
207534	SC200AR	2 Gang Low Voltage Bracket	6	034481161899
243179	E-18-4-DVR	2 Gang Dual Voltage Box/Bracket	12	034481009542
547842	SC200RR	2 Gang Low Voltage Mounting Bracket	6	034481188803
251426	SC100RR	1 Gang Low Voltage Mounting Bracket	12	034481188797
750544	SC100RR-CP	1 Gang Low Voltage Bracket Contractor 6 Pack	1	034481188797

Please ask your Thomas & Betts sales representative for a complete catalog of quality Thomas & Betts electrical products or visit us at www.tnb.com. For customer service, call 1-800-816-7809. For technical questions, call 1-888-862-3289.