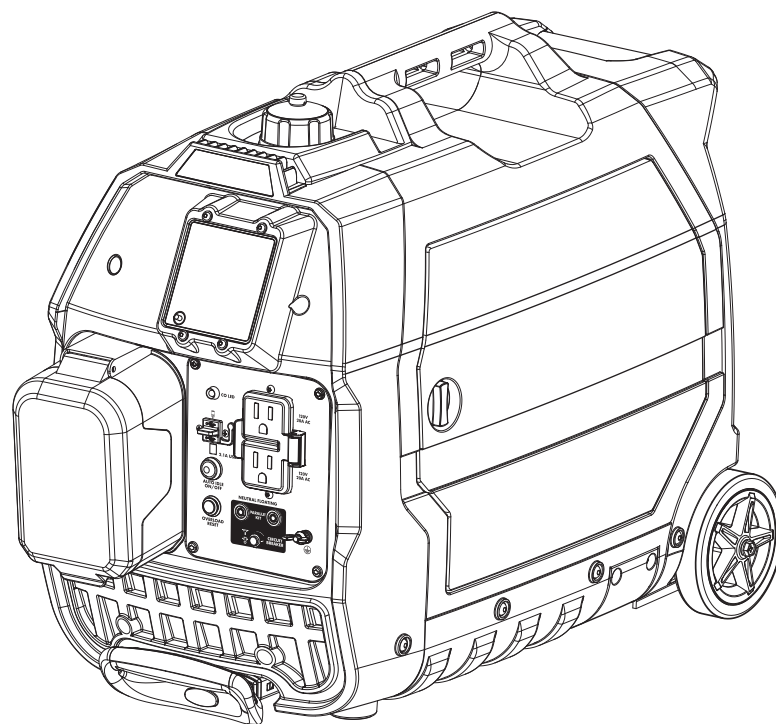


## REPLACEMENT PARTS LIST

BRAND <b>RYOBI</b>		DESCRIPTION <b>Digital Bluetooth® Inverter Generator</b>
MODEL NO. <b>RYi2322EVNM</b>	MFG. NO. <b>095930340</b>	



### TECHTRONIC INDUSTRIES POWER EQUIPMENT

P.O. Box 1288, Anderson, SC 29622 ■ 1-800-525-2579 ■ [www.ryobitools.com](http://www.ryobitools.com)

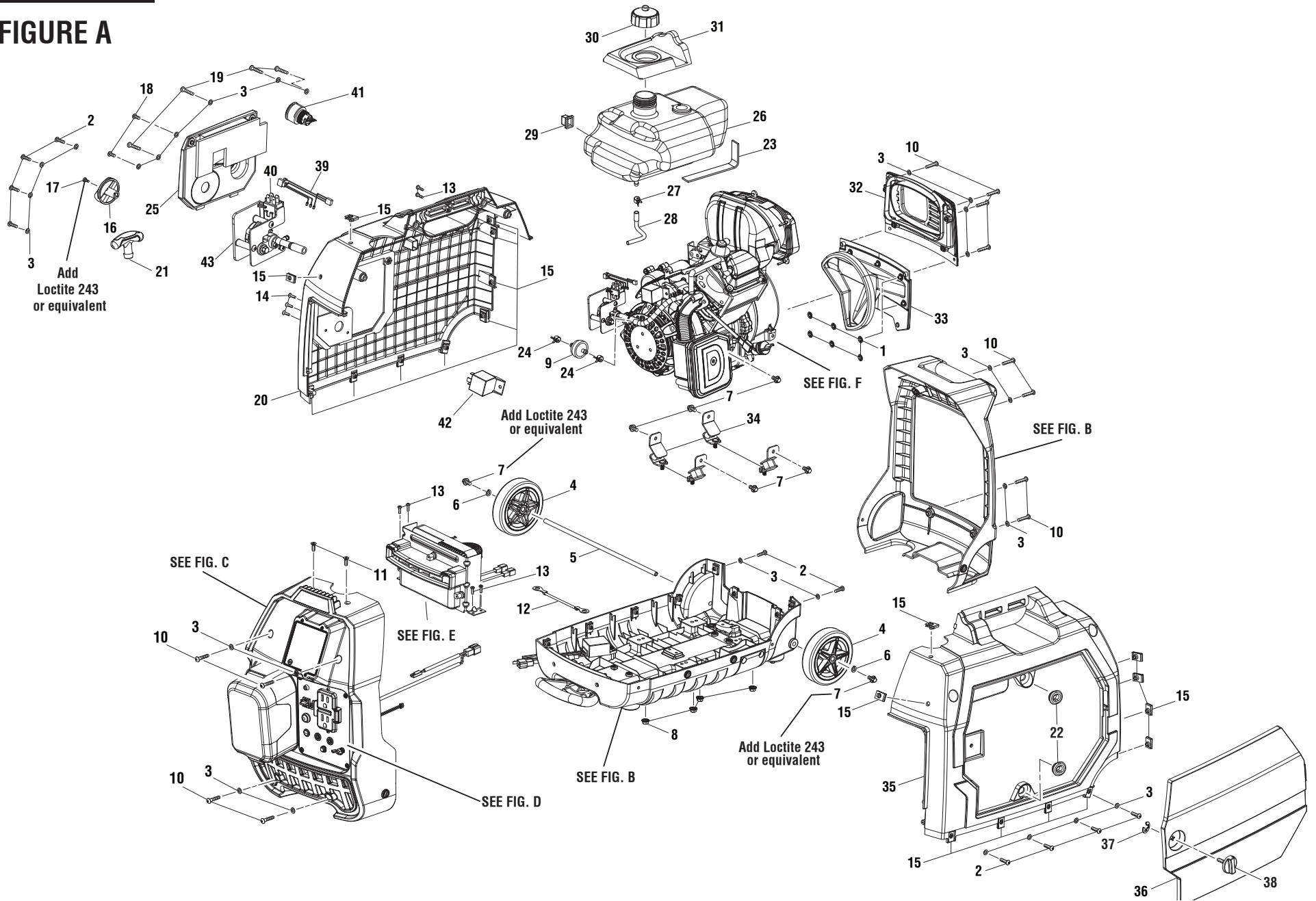
99500713  
11-2-20 (Rev:01)

*The model number and manufacturing location will be found on a label attached to the product. Always mention this information in all communications regarding this product and when ordering parts.*



RYi2322EVNM

FIGURE A

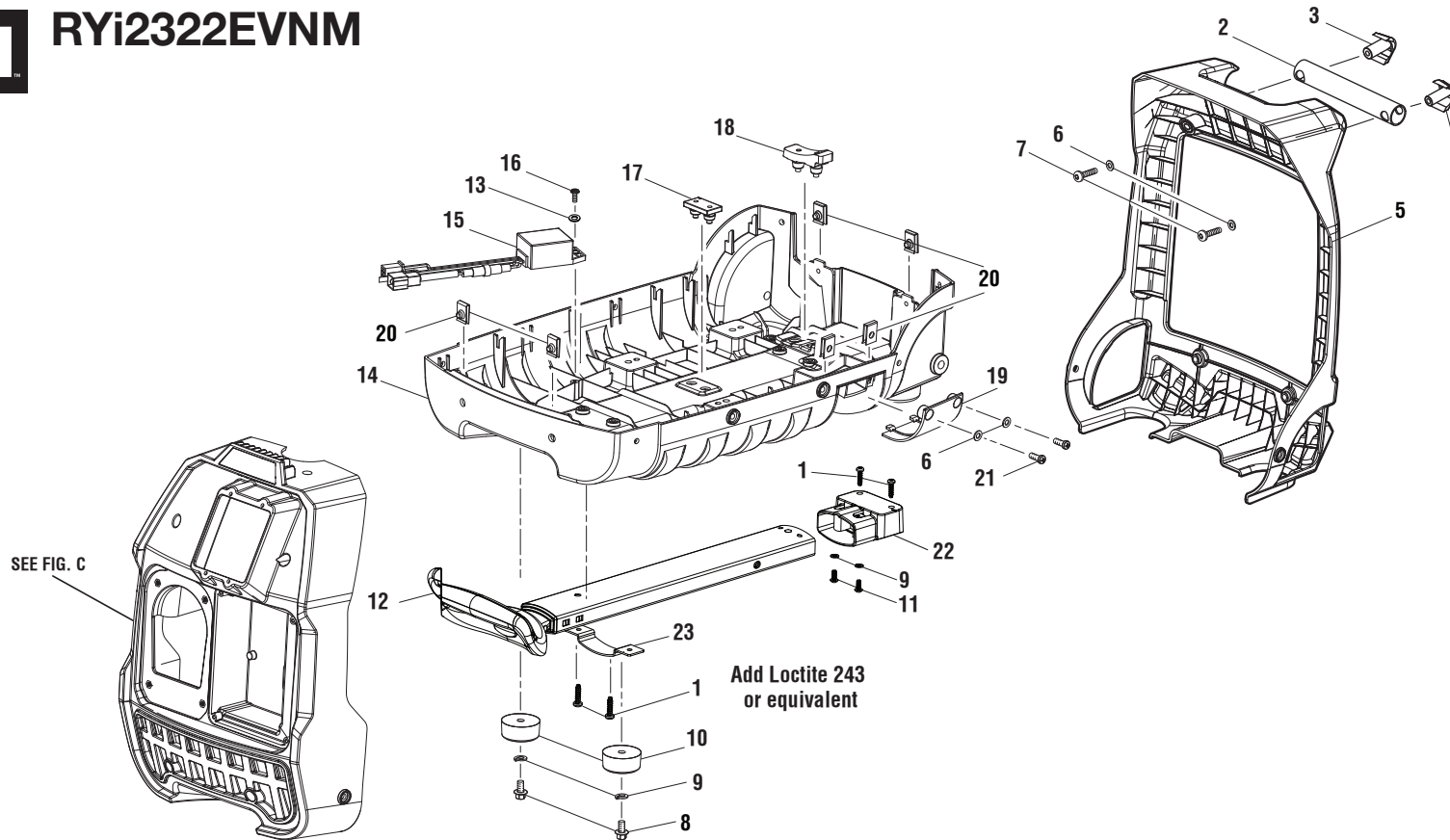


**RYi2322EVNM****PARTS LIST – FIGURE A**

KEY NO.	PART NO.	DESCRIPTION	QTY.
1	638704005	Internal Tooth Strip Retainers	6
2	660764010	Screw (M5 x 20 mm, Button Hd.)	10
3	638128014	Washer (ID5.3 x OD10 x 1t)	28
4	310223008	Wheel	2
5	620599031	Axle	1
6	678012001	Lock Washer	2
7	660975004	Bolt (M6 x 12 mm, Hex Hd.)	7
8	678774019	Lock Nut (M6)	4
9	308733008	Fuel Filter	1
10	660764011	Screw (M5 x 25 mm, Button Hd.)	12
11	660764012	Screw (M5 x 16 mm, Pan Hd.)	2
12	290404012	Ground Wire	1
13	660345015	Screw (M4 x 12 mm, T15 Torx Hd.)	6
14	661864012	Screw (M4 x 16 mm, Flat Hd.)	3
15	678900014	U-Clip (M5)	20
16	525361008	Control Knob	1
17	661346001	Screw (M4 x 10 mm)	1
18	660764007	Screw (M5 x 12 mm, Button Soc. Hd.)	2
19	660345018	Screw (M5 x 30 mm, T25 Torx Pan Hd.)	4
20	524001011	Left Housing Assembly (Inc. Key No. 15)	1
21	524015004	Recoil Handle	1
22	570766011	Grommet	2
23	560878004	Rubber Pad	1
24	678815010	Fuel Hose Clamp (9.5 mm)	2
25	525297009	Starter Cover Assembly	1

KEY NO.	PART NO.	DESCRIPTION	QTY.
26	310711202	Fuel System Assembly (Inc. Key Nos. 27-28)	1
27	678815015	Clamp (10 mm)	1
28	570358170	Fuel Hose (6 mm and 4.5 mm)	1
29	570356010	Fuel Tank Support	1
30	519709007	Vented Fuel Cap	1
31	570818005	Overspill Guard	1
32	524012042	Upper Exhaust Panel Assembly (Inc. Key No. 3)	1
33	524012012	Lower Exhaust Panel Assembly (Inc. Key No. 1)	1
34	679940011	Engine Isolator (45 Degree)	4
35	524003011	Right Housing Assembly (Inc. Key No. 15)	1
36	523430011	Maintenance Cover Assembly (Inc. Key Nos. 37-38)	1
37	638623008	E-Clip (5 mm Shaft)	1
38	525361009	Lock Knob	1
39	290514027	Main Power Switch Wiring Harness	1
40	291443006	Switch	1
41	270290029	Start/Stop Button	1
42	870266002	14V DC - 80A Relay	1
43	310437025	Valve/Switch Starter Assembly (Inc. Key Nos. 39-40)	1
	<b>Not Shown:</b>		
	700004001	Heat Shrinkable Tube (5 mm)	1
	790002001	Cable Tie	3
	120694001	Accessory Kit	1
	995000711	Operator's Manual	1
	995000712	Quick Reference Guide	1

## FIGURE B

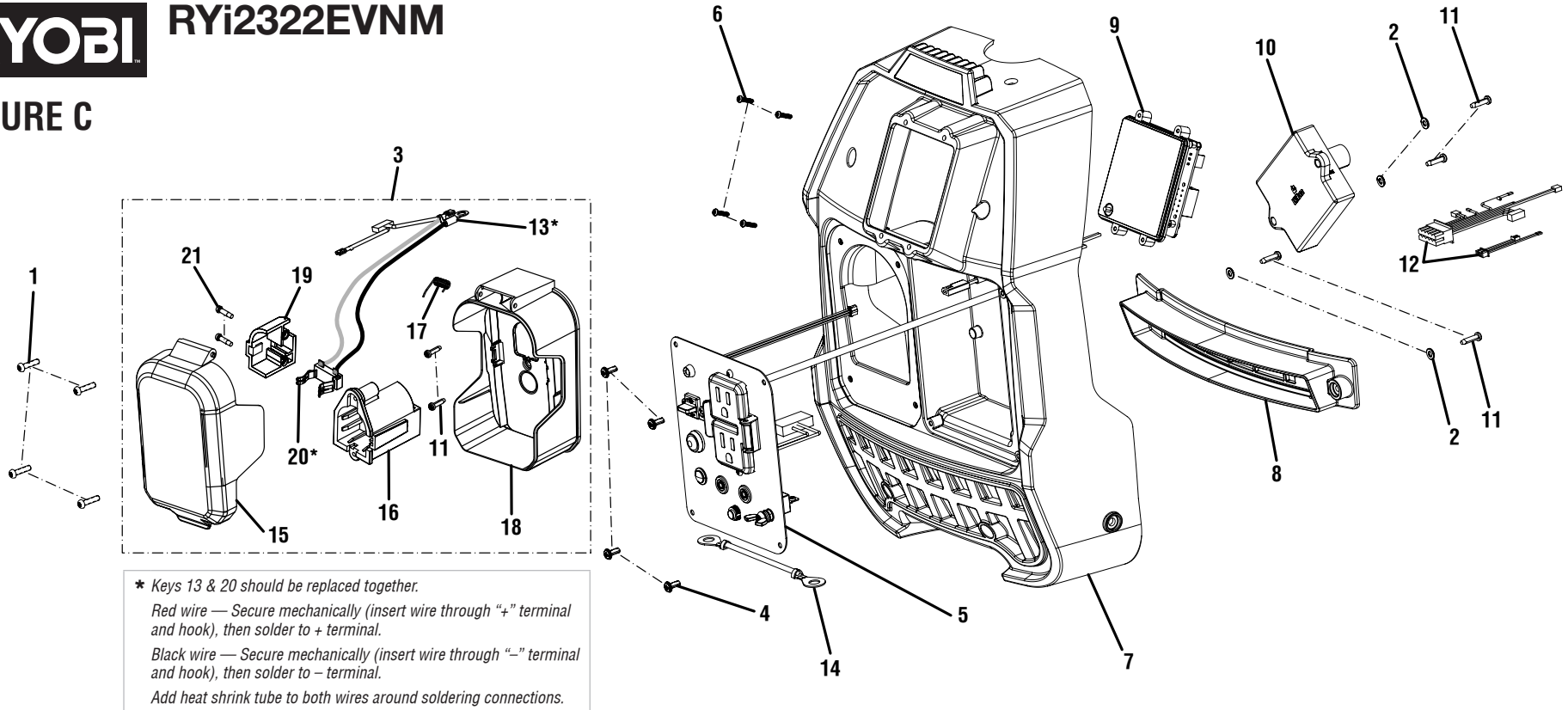


### PARTS LIST – FIGURE B

KEY NO.	PART NO.	DESCRIPTION	QTY.
1	661403016	Screw (M4 x 15 mm)	4
2	638701035	Handle Tube	1
3	525361010	Handle Cap (Right)	1
4	525361011	Handle Cap (Left)	1
5	524012036	Rear Panel	1
6	638128014	Washer (ID5.3 x OD10 x 1t)	4
7	660764010	Screw (M5 x 20 mm, Button Hd.)	2
8	660975004	Bolt (M6 x 12 mm)	2
9	678012001	Lock Washer	4
10	561454006	Isolator Foot	2
11	660764007	Screw (M5 x 16 mm, Pan Hd.)	2
12	308790085	Handle Assembly	1

KEY NO.	PART NO.	DESCRIPTION	QTY.
13	638128014	Washer (ID5.3 x OD10 x 1t)	1
14	525296022	Bottom Base	1
15	290433009	Regulator (AC to DC)	1
16	662028001	Screw (M4 x 16 mm)	1
17	570712007	Engine Support Isolator (Front)	1
18	570712008	Engine Support Isolator (Back)	1
19	519813032	Oil Drain Door	1
20	678900014	U-Clip (M5)	6
21	660342013	Screw (M5 x 12 mm, Pan Hd.)	2
22	524021008	Handle Bracket (Plastic)	1
23	639138011	Metal Bracket	1

### FIGURE C



### PARTS LIST — FIGURE C

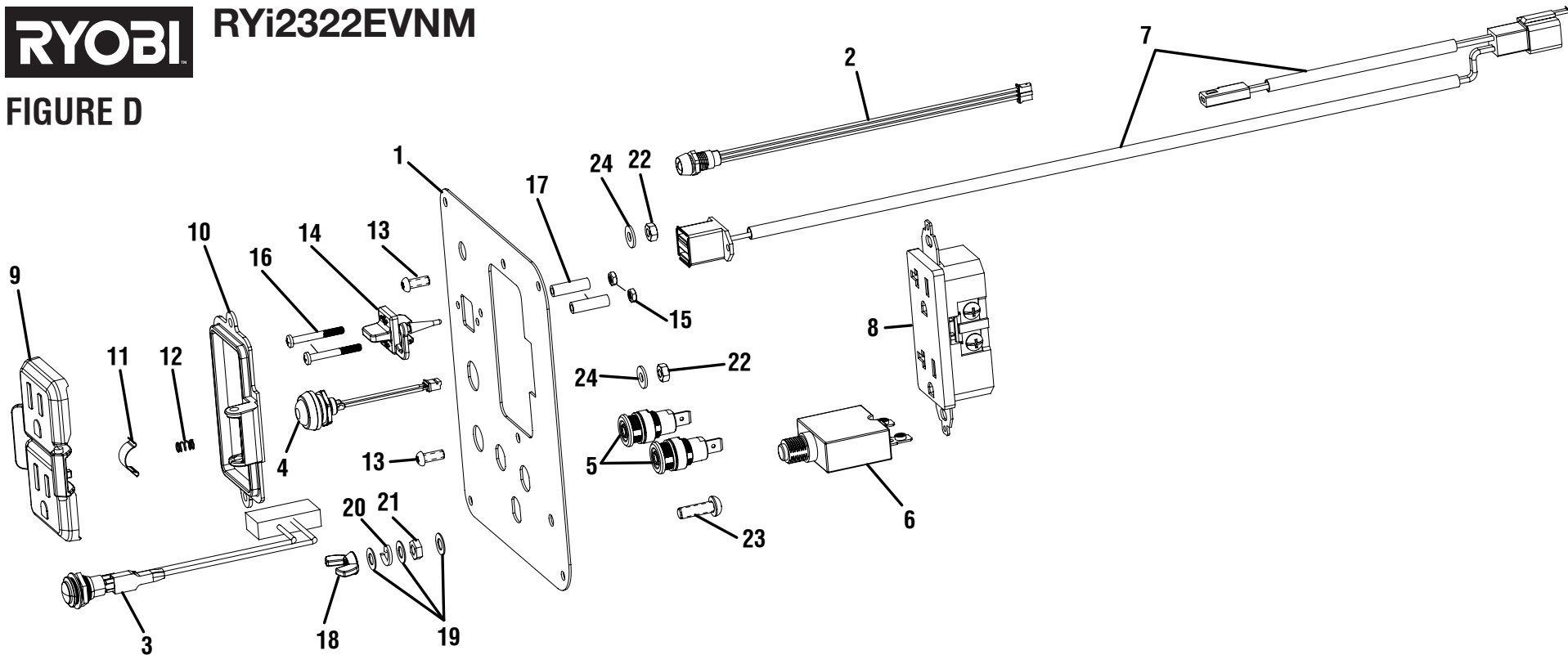
KEY NO.	PART NO.	DESCRIPTION	QTY.
1	660383009	Screw (M4 x 16 mm, T25 Torx Pan Hd.)	4
2	632716002	Washer (OD9 x ID4.4 x 1t)	4
3	526979002	Battery Housing Assembly	1
4	660345009	Screw w/Washer (M4 x 10 mm, T20 Torx Hd.)	4
5	290403098	Faceplate Assembly	1
6	660821002	Screw (#4-20, T10 Torx Pan Hd.)	4
7	518728016	Front Cover	1
8	525297011	Air Guide	1
9	290432043	GenControl Assembly	1
10	291939001	Auto-Choke Module	1
11	662028001	Screw (M4 x 16 mm)	6

KEY NO.	PART NO.	DESCRIPTION	QTY.
12	290514024	GenControl Wiring Harness	1
13*	290435063	Internal Wire Assembly	1
14	290404011	Ground Wire	1
15	526979004	Battery Compartment Cover	1
16	526978001	Battery Holder	1
17	697240001	Torsion Spring	1
18	526979003	Battery Compartment Base	1
19	526979001	Battery Holder Cover	1
20*	300001067	Contact Plate Holder Assembly	1
21	662328001	Screw (M3.5 x 12 mm, T10 Torx Pan Hd.)	2



RYi2322EVNM

FIGURE D



PARTS LIST – FIGURE D

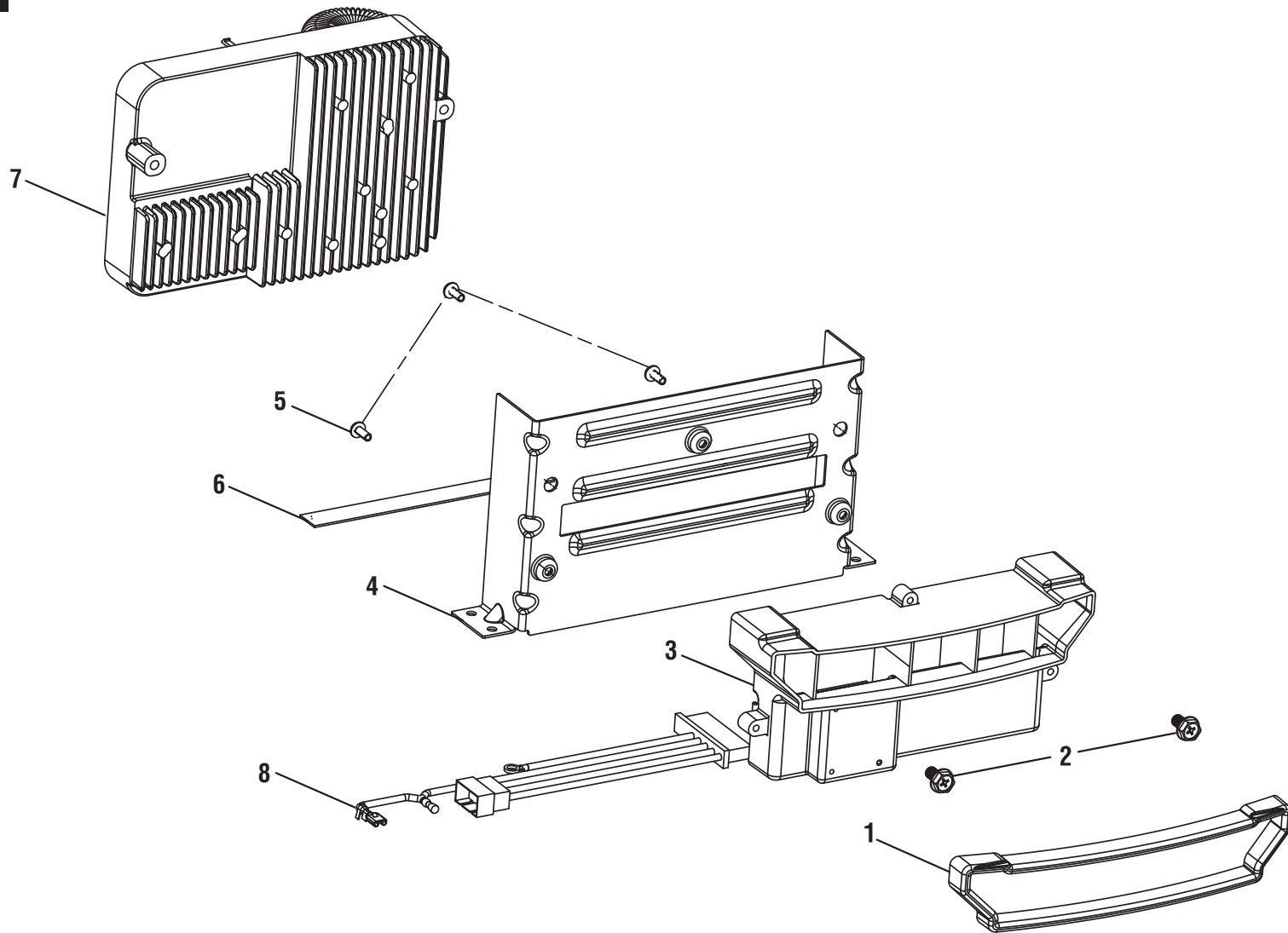
KEY NO.	PART NO.	DESCRIPTION	QTY.
1	638700055	Faceplate	1
2	291789002	CO Indicator	1
3	760945003	Overload Reset Button	1
4	760945008	Auto Idle Button	1
5	870932002	Connector (Black)	2
6	780350007	Circuit Breaker (20A)	1
7	290435067	Regulator Wire Harness w/USB Ports	1
8	290400017	120 Volt Duplex Receptacle (20 Amp)	1
9	570412014	Movable Outlet Cover	1
10	570412015	Fixed Outlet Cover	1
11	570412012	Clip	1
12	679449001	Compression Spring	1

KEY NO.	PART NO.	DESCRIPTION	QTY.
13	660345025	Screw (#6-20 x 3/8 in., T15 Torx Pan Hd.)	2
14	563684002	Dual USB Cover	1
15	673288001	Nut (M3)	2
16	662111001	Screw (M3)	2
17	662112001	Spacer (17.2 mm)	2
18	678016009	Wing Nut (M5)	1
19	638623005	Washer (ID5.3 x OD10 x 0.5t)	3
20	678343003	Lock Washer (ID5 x OD9 x 1.3t)	1
21	678016008	Hex Nut (M5)	1
22	661514002	Hex Nut (M4)	2
23	660976002	Screw (M5 x 16 mm, Phillips Pan Hd.)	1
24	690969002	Flat Washer (ID4.2 x OD10)	2



RYi2322EVNM

FIGURE E

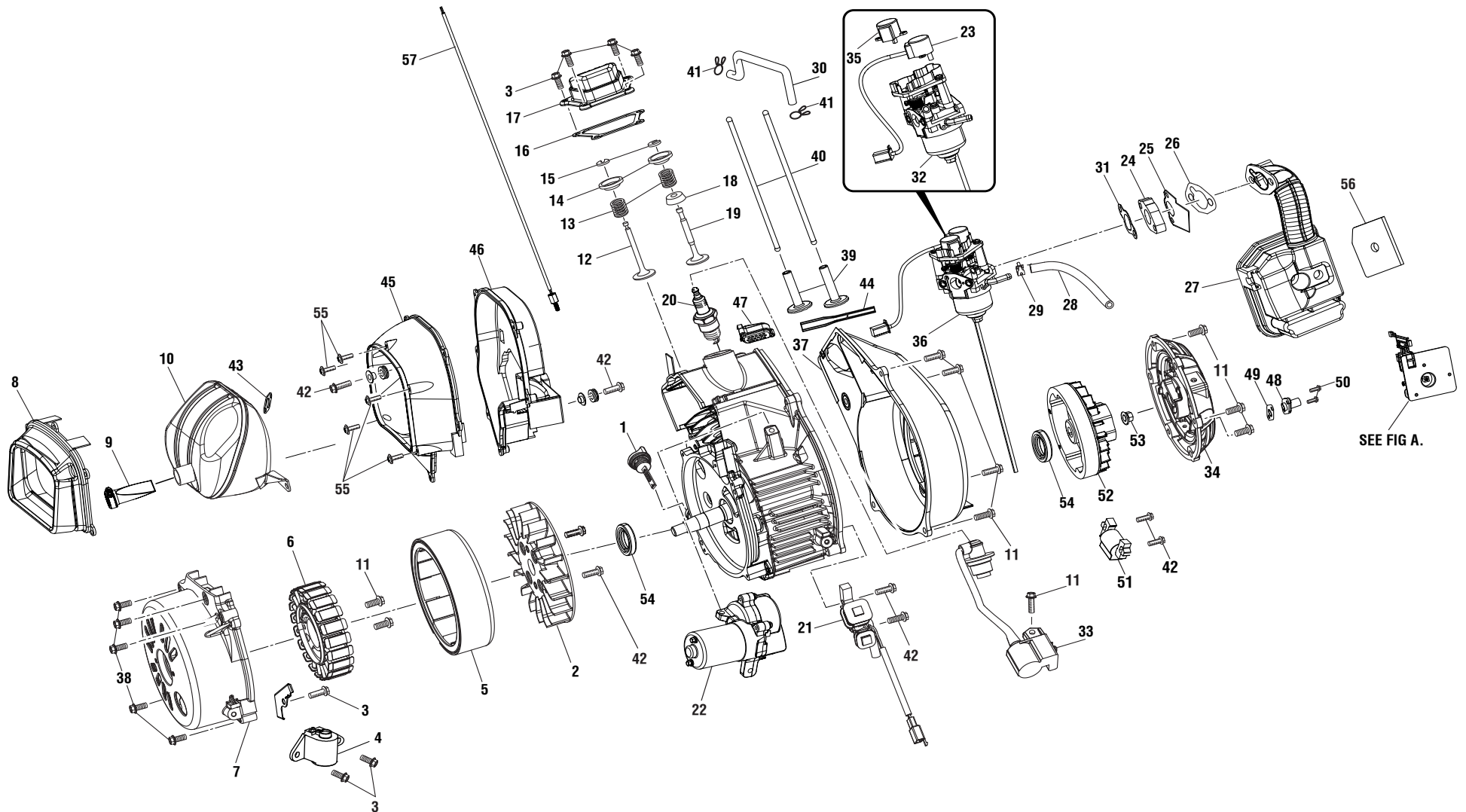


PARTS LIST – FIGURE E

KEY NO.	PART NO.	DESCRIPTION	QTY.
1	570818008	Rubber Trim	1
2	660975004	Bolt (M6 x 12 mm, Hex Hd.)	2
3	525297018	Baffle (Engine Intake)	1
4	638494027	Bracket	1

KEY NO.	PART NO.	DESCRIPTION	QTY.
5	660345009	Screw w/Washer (M4 x 10 mm, T20 Torx Hd.)	3
6	570630006	Rubber Pad	1
7	290991049	Inverter Module	1
8	290514026	CO Module Wiring Harness	1



**FIGURE F**

*Not all parts shown on the exploded view are available. Some parts are shown to identify position and location of parts that are available.*





**RYi2322EVNM**

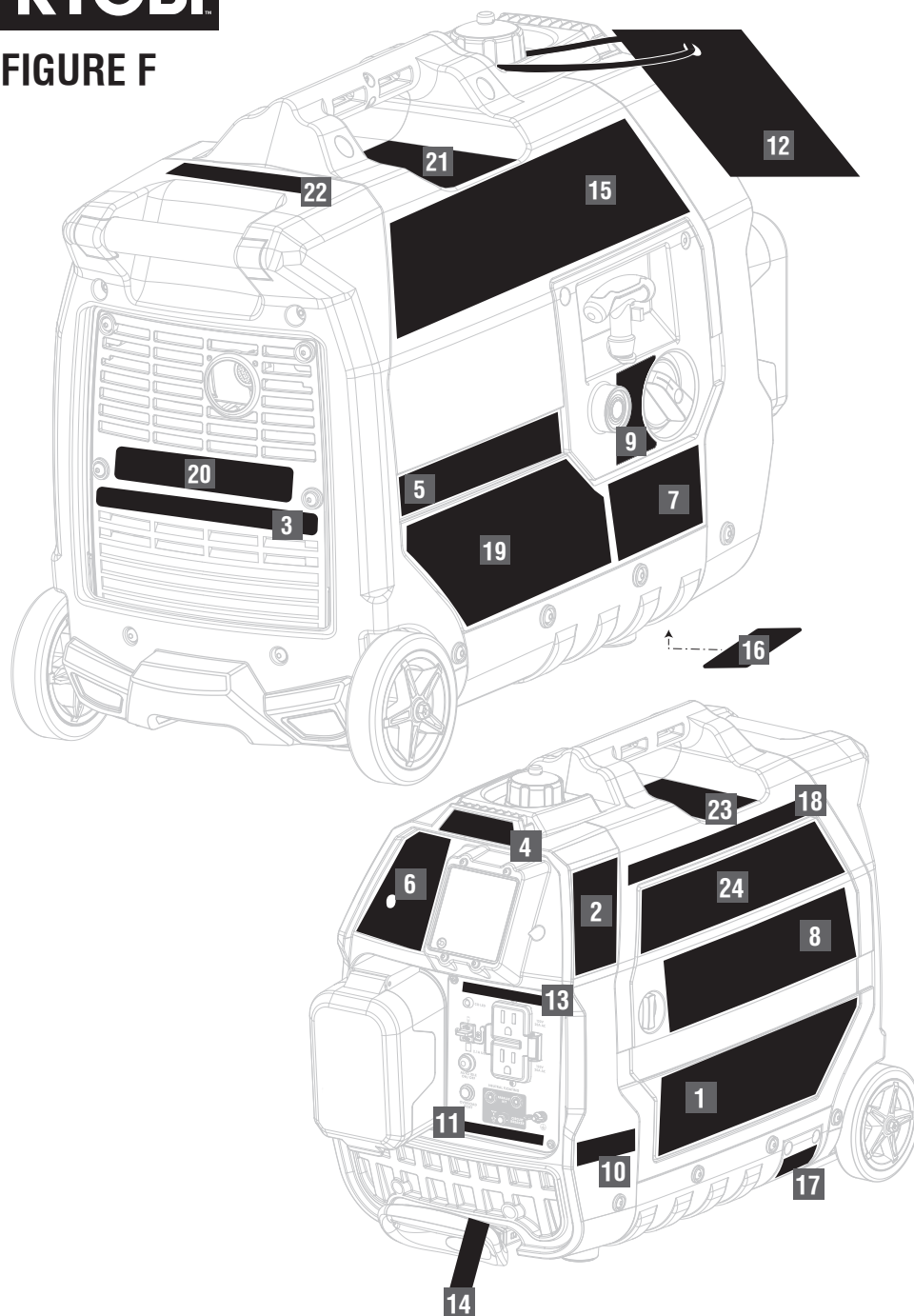
**PARTS LIST – FIGURE F**

KEY NO.	PART NO.	DESCRIPTION	QTY.
1	310302005	Oil Dipstick	1
2	310757003	Fan	1
3	91325	Bolt (M6 x 12 mm)	7
4	205101	Low Oil Sensor	1
5	310771053	Rotor	1
6	310772067	Stator	1
7	678289012	Alternator Cover	1
8	638497046	Muffler Heat Shield	1
9	638147015	Spark Screen	1
10	308990062	Muffler	1
11	91329	Bolt (M6 x 16 mm)	11
12	205901	Exhaust Valve	1
13	206001	Valve Spring	2
14	201801	Plate	2
15	200801	Valve Lock Clamp	2
16	96006	Gasket (Overhead Cover)	1
17	201101	Overhead Cover	1
18	201802	Inlet Valve Spring Seat	1
19	201701	Inlet Valve	1
20	97101*	Spark Plug	1
21	760504020	RPM Sensor	1
22	230417021	18V Electric Starter Motor	1
23	230404003	Stepper Motor for Auto-Choke	1
24	202301	Thermal Insulation Seat (Carburator)	1
25	96121	Paper Gasket	1
26	96009	Air Box Gasket	1
27	518248005	Air Filter Assembly (Inc. 1 each of Key Nos. 11 & 42)	1
28	570358172	Fuel Hose (6 mm)	1
29	678409003	Fuel Line Clamp (7/16 in.)	1

KEY NO.	PART NO.	DESCRIPTION	QTY.
30	209917	Breather Pipe	1
31	96008	Gasket (Connection Block)	1
32	308054144	Carburetor	1
33	850202008	Ignition Coil	1
34	636996002	Engine Recoil	1
35	230404002	Stepper Motor	1
36	308054143	Carburetor Assembly (Inc. Key Nos. 23, 32 and 35)	1
37	204705	Engine Cover	1
38	91334	Bolt (M6 x 30 mm)	5
39	206101	Lifter Valve	2
40	201901	Pushing Rod	2
41	94407	Clip	2
42	91330	Bolt (M6 x 20 mm)	9
43	96260	Gasket (Connection Block)	1
44	95664	Breather Hose	1
45	202503	Muffler Cover 1	1
46	202506	Muffler Cover 2	1
47	247904	Fill Valve Assembly	1
48	229908	Ring Flange	1
49	209918	Oil Ring	1
50	91322	Bolt (M5 x 12 mm)	2
51	97502	Magneto Ignition	1
52	200401	Flywheel	1
53	T90014	Flywheel Nut	1
54	93501	Oil Seal	2
55	D92108	Screw	5
56	D5291	Air Filter	1
57	830291005	Head Temperature Sensor	1

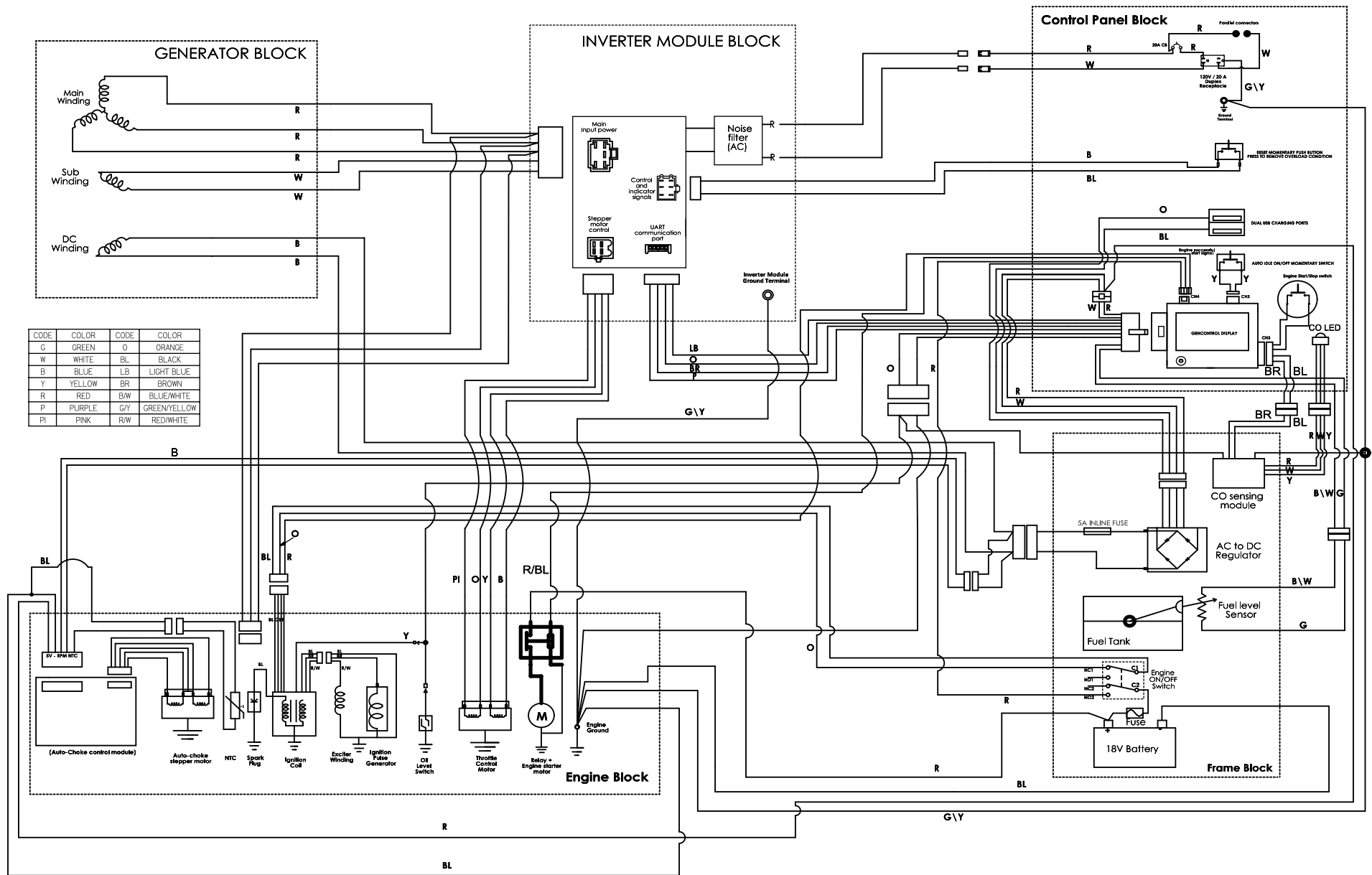
\* STANDARD HARDWARE ITEM – MAY BE PURCHASED LOCALLY

FIGURE F



PARTS LIST — FIGURE F

KEY NO.	PART NO.	DESCRIPTION	QTY.
1	940779257	Inquiries Label	1
2	940782005	Fuel Stabilizer Label	1
3	940513035	Ground Warning Label (EN/FR)	1
4	940779255	Logo Label	1
5	940617218	Start Label	1
6	940779256	Electric Start/Bluetooth Hood Label	1
7	941008080	Electric Start Label	1
8	941207011	CO Automatic Shut Down Label	1
9	940647148	Control Knob Label	1
10	941207017	Do Not Tamper Warning Label	1
11	940779249	LED Light Legend Label	1
12	940971087	Notice Hangtag	1
13	790002001	FCC ID Label	1
14	940758016	Handle Release Label	1
15	940779184	Performance Label	1
16	941214001	Upright Storage Warning Label	1
17	940911003	Maintenance Label	1
18	940974020	Fire Distance Label	1
19	941008041	Gen Control Label	1
20	940947035	Combustion Label	1
21	940654323	Danger Label	1
22	941209001	Exhaust Direction Label	1
23	940515017	CPSC Label	1
24	940779186	Performance Label (Maintenance Door)	1



### WIRING DIAGRAM